

Home report

2304 Jewel Street, New North Longmont, Longmont, Boulder County, Colorado, United States, 80501



Total Area: 2817 sq. ft

Below Ground: 786 sq. ft, Floor 2: 1072 sq. ft, Floor 3: 959 sq. ft

Excluded: Garage 473 sq. ft, Porch 120 sq. ft, Patio 188 sq. ft, Walls: 225 sq. ft

Property summary

 **3** Floors

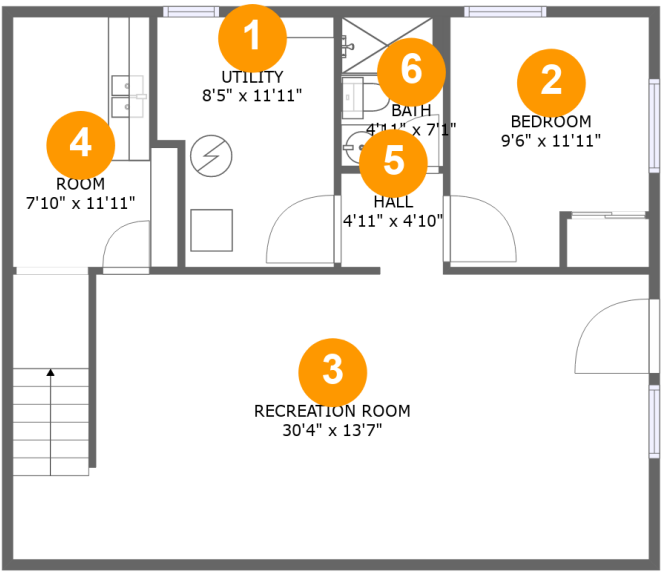
 **5** Bedrooms

 **3** Bathrooms

 **1** Garages

Home report

2304 Jewel Street, New North Longmont, Longmont, Boulder County, Colorado, United States, 80501



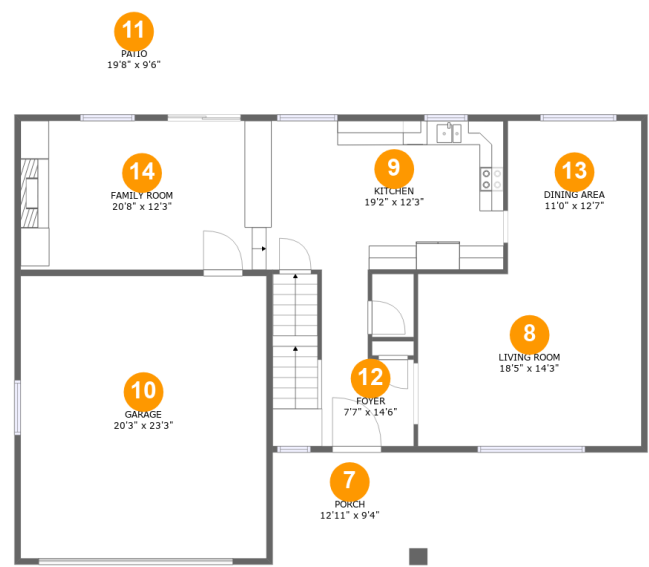
Room dimensions

Floor 1 Below ground Total:786sqft Excluded: 0sqft

#		Max Dimensions	sqft	Included
1	Utility	8'5" x 11'11"	93 sq. ft	Yes
2	Bedroom	9'6" x 11'11"	102 sq. ft	Yes
3	Recreation Room	30'4" x 13'7"	410 sq. ft	Yes
4	Room	7'10" x 11'11"	86 sq. ft	Yes
5	Hall	4'11" x 4'10"	23 sq. ft	Yes
6	Bath	4'11" x 7'1"	35 sq. ft	Yes

Home report

2304 Jewel Street, New North Longmont, Longmont, Boulder County, Colorado, United States, 80501



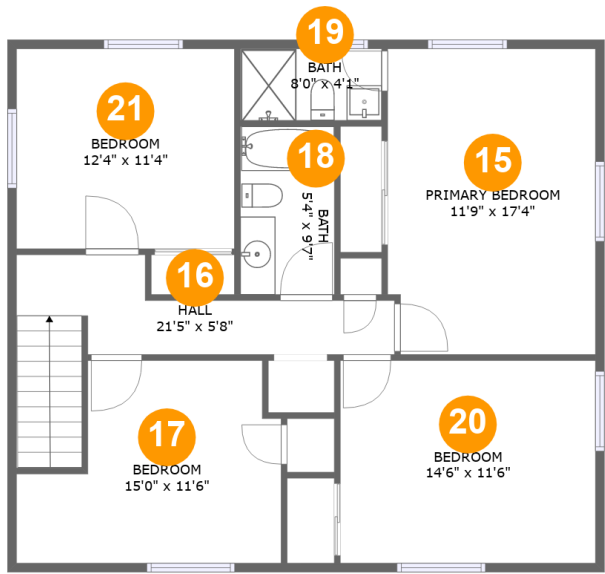
Room dimensions

Floor 2 Total:1072sqft   Excluded: 781sqft

#		Max Dimensions	sqft	Included
7	Porch	12'11" x 9'4"	120 sq. ft	No
8	Living Room	18'5" x 14'3"	262 sq. ft	Yes
9	Kitchen	19'2" x 12'3"	236 sq. ft	Yes
10	Garage	20'3" x 23'3"	473 sq. ft	No
11	Patio	19'8" x 9'6"	188 sq. ft	No
12	Foyer	7'7" x 14'6"	138 sq. ft	Yes
13	Dining Area	11'0" x 12'7"	139 sq. ft	Yes
14	Family Room	20'8" x 12'3"	254 sq. ft	Yes

Home report

2304 Jewel Street, New North Longmont, Longmont, Boulder County, Colorado, United States, 80501



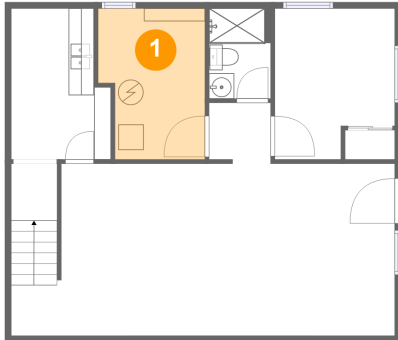
Room dimensions

Floor 3 Total:959sqft Excluded: 0sqft

#		Max Dimensions	sqft	Included
15	Primary Bedroom	11'9" x 17'4"	202 sq. ft	Yes
16	Hall	21'5" x 5'8"	108 sq. ft	Yes
17	Bedroom	15'0" x 11'6"	143 sq. ft	Yes
18	Bath	5'4" x 9'7"	51 sq. ft	Yes
19	Bath	8'0" x 4'1"	33 sq. ft	Yes
20	Bedroom	14'6" x 11'6"	167 sq. ft	Yes
21	Bedroom	12'4" x 11'4"	140 sq. ft	Yes

2304 Jewel Street, New North Longmont, Longmont, Boulder County, Colorado, United States, 80501

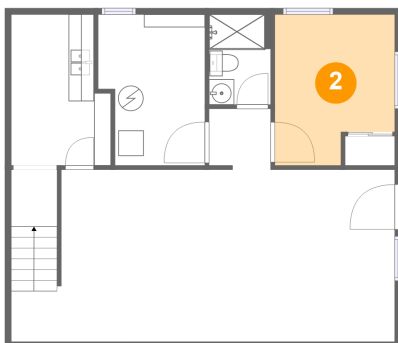
## 1 Floor 1 - Utility



Max Dimensions: 8'5" x 11'11"  
Calculated Area: 93 sq. ft  
Included: Yes

Heated: Yes  
Finished: Yes  
Enclosed: Yes  
Contiguous: Yes  
Permitted: Yes  
Wet space: No  
Addition: No  
Conversion: No

## 2 Floor 1 - Bedroom

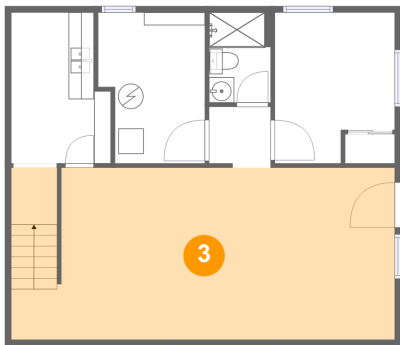


Max Dimensions: 9'6" x 11'11"  
Calculated Area: 102 sq. ft  
Included: Yes

Heated: Yes  
Finished: Yes  
Enclosed: Yes  
Contiguous: Yes  
Permitted: Yes  
Wet space: No  
Addition: No  
Conversion: No

2304 Jewel Street, New North Longmont, Longmont, Boulder County, Colorado, United States, 80501

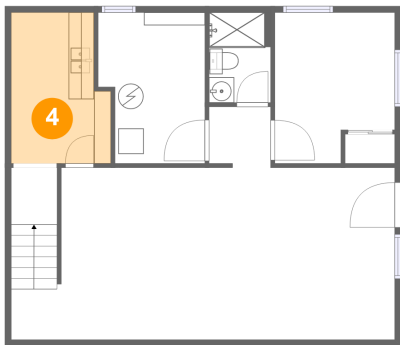
3 Floor 1 - Recreation Room



Max Dimensions: 30'4" x 13'7"  
Calculated Area: 410 sq. ft  
Included: Yes

Heated: Yes  
Finished: Yes  
Enclosed: Yes  
Contiguous: Yes  
Permitted: Yes  
Wet space: No  
Addition: No  
Conversion: No

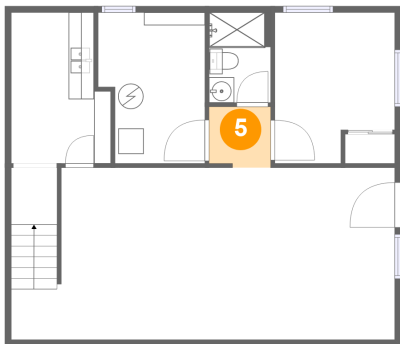
4 Floor 1 - Room



Max Dimensions: 7'10" x 11'11"  
Calculated Area: 86 sq. ft  
Included: Yes

Heated: Yes  
Finished: Yes  
Enclosed: Yes  
Contiguous: Yes  
Permitted: Yes  
Wet space: No  
Addition: No  
Conversion: No

5 Floor 1 - Hall

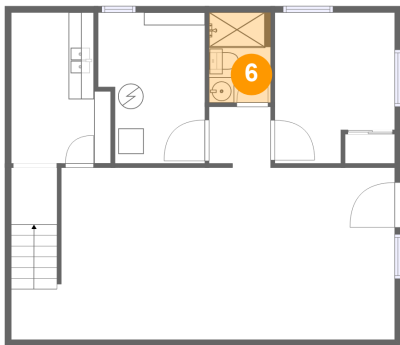


Max Dimensions: 4'11" x 4'10"  
Calculated Area: 23 sq. ft  
Included: Yes

Heated: Yes  
Finished: Yes  
Enclosed: Yes  
Contiguous: Yes  
Permitted: Yes  
Wet space: No  
Addition: No  
Conversion: No

2304 Jewel Street, New North Longmont, Longmont, Boulder County, Colorado, United States, 80501

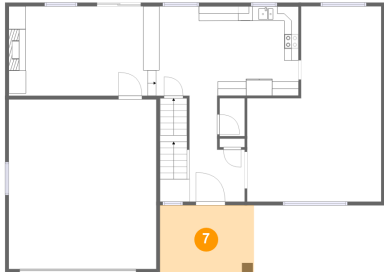
6 Floor 1 - Bath



Max Dimensions: 4'11" x 7'1"  
Calculated Area: 35 sq. ft  
Included: Yes

Heated: Yes  
Finished: Yes  
Enclosed: Yes  
Contiguous: Yes  
Permitted: Yes  
Wet space: Yes  
Addition: No  
Conversion: No

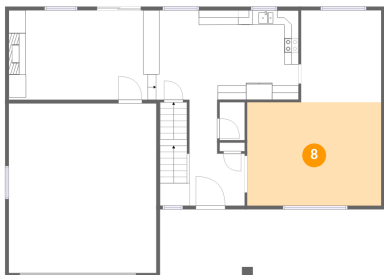
7 Floor 2 - Porch



Max Dimensions: 12'11" x 9'4"  
Calculated Area: 120 sq. ft  
Included: No

Heated: No  
Finished: Yes  
Enclosed: No  
Contiguous: Yes  
Permitted: Yes  
Wet space: No  
Addition: No  
Conversion: No

8 Floor 2 - Living Room

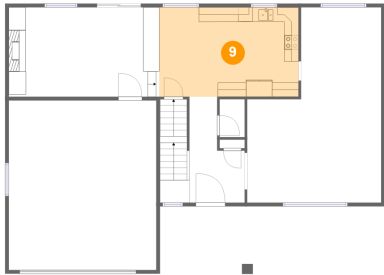


Max Dimensions: 18'5" x 14'3"  
Calculated Area: 262 sq. ft  
Included: Yes

Heated: Yes  
Finished: Yes  
Enclosed: Yes  
Contiguous: Yes  
Permitted: Yes  
Wet space: No  
Addition: No  
Conversion: No

2304 Jewel Street, New North Longmont, Longmont, Boulder County, Colorado, United States, 80501

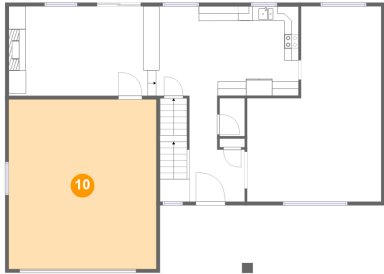
9 Floor 2 - Kitchen



Max Dimensions: 19'2" x 12'3"  
Calculated Area: 236 sq. ft  
Included: Yes

Heated: Yes  
Finished: Yes  
Enclosed: Yes  
Contiguous: Yes  
Permitted: Yes  
Wet space: No  
Addition: No  
Conversion: No

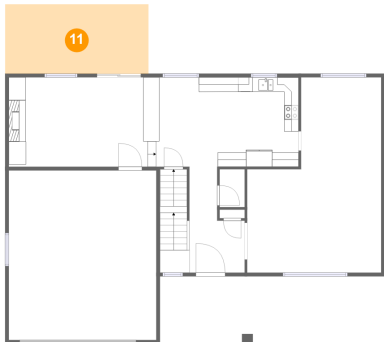
10 Floor 2 - Garage



Max Dimensions: 20'3" x 23'3"  
Calculated Area: 473 sq. ft  
Included: No

Heated: No  
Finished: No  
Enclosed: Yes  
Contiguous: Yes  
Permitted: Yes  
Wet space: No  
Addition: No  
Conversion: No

11 Floor 2 - Patio



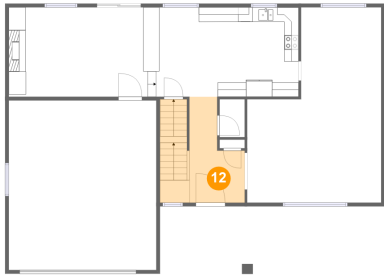
Max Dimensions: 19'8" x 9'6"  
Calculated Area: 188 sq. ft  
Included: No

Heated: No  
Finished: Yes  
Enclosed: No  
Contiguous: Yes  
Permitted: Yes  
Wet space: No  
Addition: No  
Conversion: No



2304 Jewel Street, New North Longmont, Longmont, Boulder County, Colorado, United States, 80501

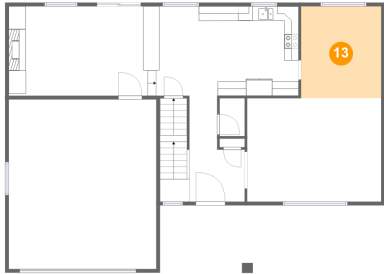
12 Floor 2 - Foyer



Max Dimensions: 7'7" x 14'6"  
Calculated Area: 138 sq. ft  
Included: Yes

Heated: Yes  
Finished: Yes  
Enclosed: Yes  
Contiguous: Yes  
Permitted: Yes  
Wet space: No  
Addition: No  
Conversion: No

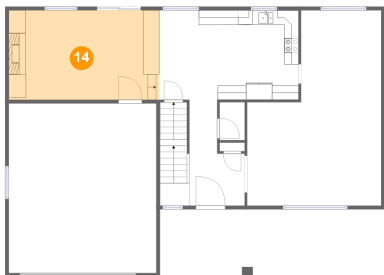
13 Floor 2 - Dining Area



Max Dimensions: 11'0" x 12'7"  
Calculated Area: 139 sq. ft  
Included: Yes

Heated: Yes  
Finished: Yes  
Enclosed: Yes  
Contiguous: Yes  
Permitted: Yes  
Wet space: No  
Addition: No  
Conversion: No

14 Floor 2 - Family Room

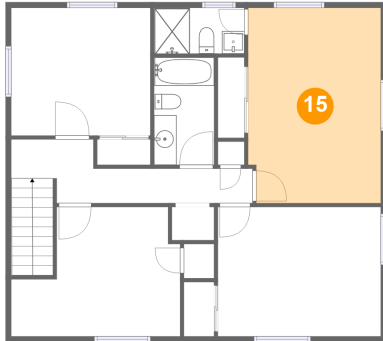


Max Dimensions: 20'8" x 12'3"  
Calculated Area: 254 sq. ft  
Included: Yes

Heated: Yes  
Finished: Yes  
Enclosed: Yes  
Contiguous: Yes  
Permitted: Yes  
Wet space: No  
Addition: No  
Conversion: No

2304 Jewel Street, New North Longmont, Longmont, Boulder County, Colorado, United States, 80501

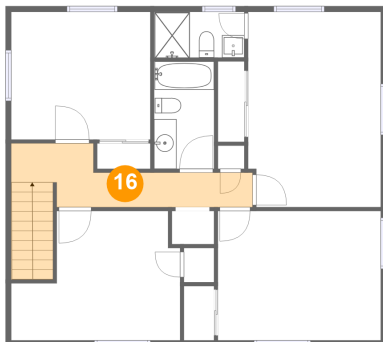
### 15 Floor 3 - Primary Bedroom



Max Dimensions: 11'9" x 17'4"  
Calculated Area: 202 sq. ft  
Included: Yes

Heated: Yes  
Finished: Yes  
Enclosed: Yes  
Contiguous: Yes  
Permitted: Yes  
Wet space: No  
Addition: No  
Conversion: No

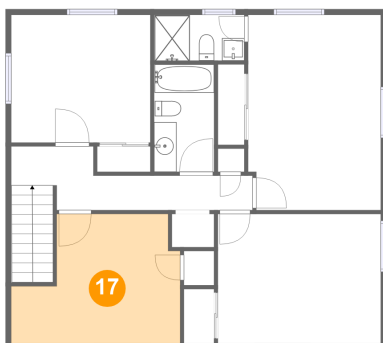
### 16 Floor 3 - Hall



Max Dimensions: 21'5" x 5'8"  
Calculated Area: 108 sq. ft  
Included: Yes

Heated: Yes  
Finished: Yes  
Enclosed: Yes  
Contiguous: Yes  
Permitted: Yes  
Wet space: No  
Addition: No  
Conversion: No

### 17 Floor 3 - Bedroom

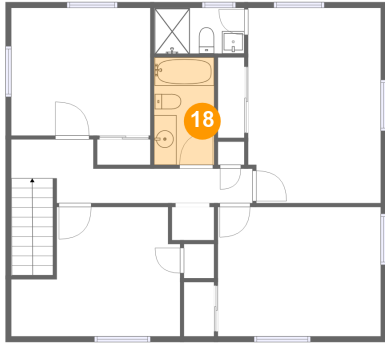


Max Dimensions: 15'0" x 11'6"  
Calculated Area: 143 sq. ft  
Included: Yes

Heated: Yes  
Finished: Yes  
Enclosed: Yes  
Contiguous: Yes  
Permitted: Yes  
Wet space: No  
Addition: No  
Conversion: No

2304 Jewel Street, New North Longmont, Longmont, Boulder County, Colorado, United States, 80501

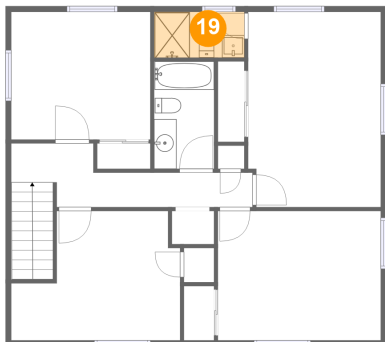
### 18 Floor 3 - Bath



Max Dimensions: 5'4" x 9'7"  
Calculated Area: 51 sq. ft  
Included: Yes

Heated: Yes  
Finished: Yes  
Enclosed: Yes  
Contiguous: Yes  
Permitted: Yes  
Wet space: Yes  
Addition: No  
Conversion: No

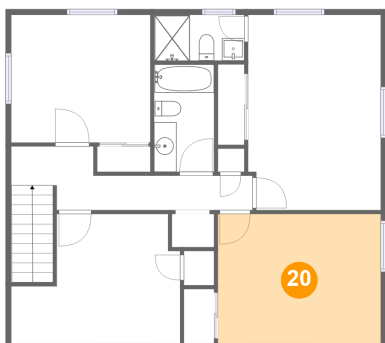
### 19 Floor 3 - Bath



Max Dimensions: 8'0" x 4'1"  
Calculated Area: 33 sq. ft  
Included: Yes

Heated: Yes  
Finished: Yes  
Enclosed: Yes  
Contiguous: Yes  
Permitted: Yes  
Wet space: Yes  
Addition: No  
Conversion: No

### 20 Floor 3 - Bedroom

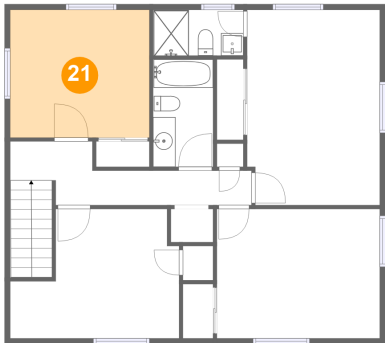


Max Dimensions: 14'6" x 11'6"  
Calculated Area: 167 sq. ft  
Included: Yes

Heated: Yes  
Finished: Yes  
Enclosed: Yes  
Contiguous: Yes  
Permitted: Yes  
Wet space: No  
Addition: No  
Conversion: No

2304 Jewel Street, New North Longmont, Longmont, Boulder  
County, Colorado, United States, 80501

21 Floor 3 - Bedroom



Max Dimensions: 12'4" x 11'4"  
Calculated Area: 140 sq. ft  
Included: Yes

Heated: Yes  
Finished: Yes  
Enclosed: Yes  
Contiguous: Yes  
Permitted: Yes  
Wet space: No  
Addition: No  
Conversion: No