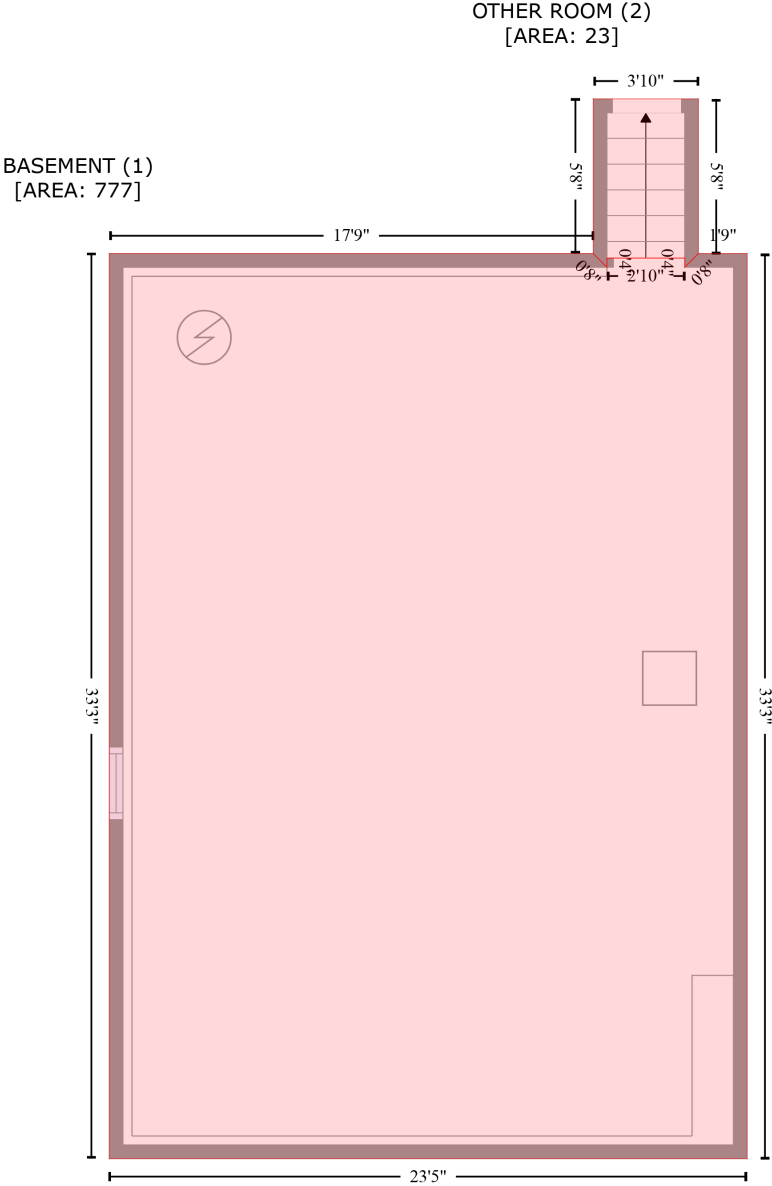


3847 Irving St, Denver, Colorado, United States

Gross Living Area: 1603 sq. ft



Space	Area (sq. ft)	Calculation <small>Coordinate Polygon Area Algorithm using inches</small>
BASEMENT (Non-living area)	777	$ \begin{aligned} & -((433.8 + 439.8) * (66.2 - 72.2) + (439.8 + 439.8) * (72.2 - 68.2) + (439.8 + 474.1) * (68.2 - 68.2) \\ & + (474.1 + 474.1) * (68.2 - 72.2) + (474.1 + 480.1) * (72.2 - 66.2) + (480.1 + 501.6) * (66.2 - 66.2) \\ & + (501.6 + 501.6) * (66.2 - 464.8) + (501.6 + 220.5) * (464.8 - 464.8) + (220.5 + 220.5) * (464.8 - \\ & 66.2) + (220.5 + 433.8) * (66.2 - 66.2)) * 0.5 * 0.00694 \end{aligned} $
OTHER ROOM (Non-living area)	23	$ \begin{aligned} & -((480.1 + 480.1) * (-2 - 66.2) + (480.1 + 474.1) * (66.2 - 72.2) + (474.1 + 474.1) * (72.2 - 68.2) + \\ & (474.1 + 439.8) * (68.2 - 68.2) + (439.8 + 439.8) * (68.2 - 72.2) + (439.8 + 433.8) * (72.2 - 66.2) + \end{aligned} $

3847 Irving St, Denver, Colorado, United States

Gross Living Area: 1603 sq. ft

Space	Area (sq. ft)	Calculation <small>Coordinate Polygon Area Algorithm using inches</small>
		$(433.8 + 433.8) * (66.2 - -2) + (433.8 + 480.1) * (-2 - -2) * 0.5 * 0.00694$

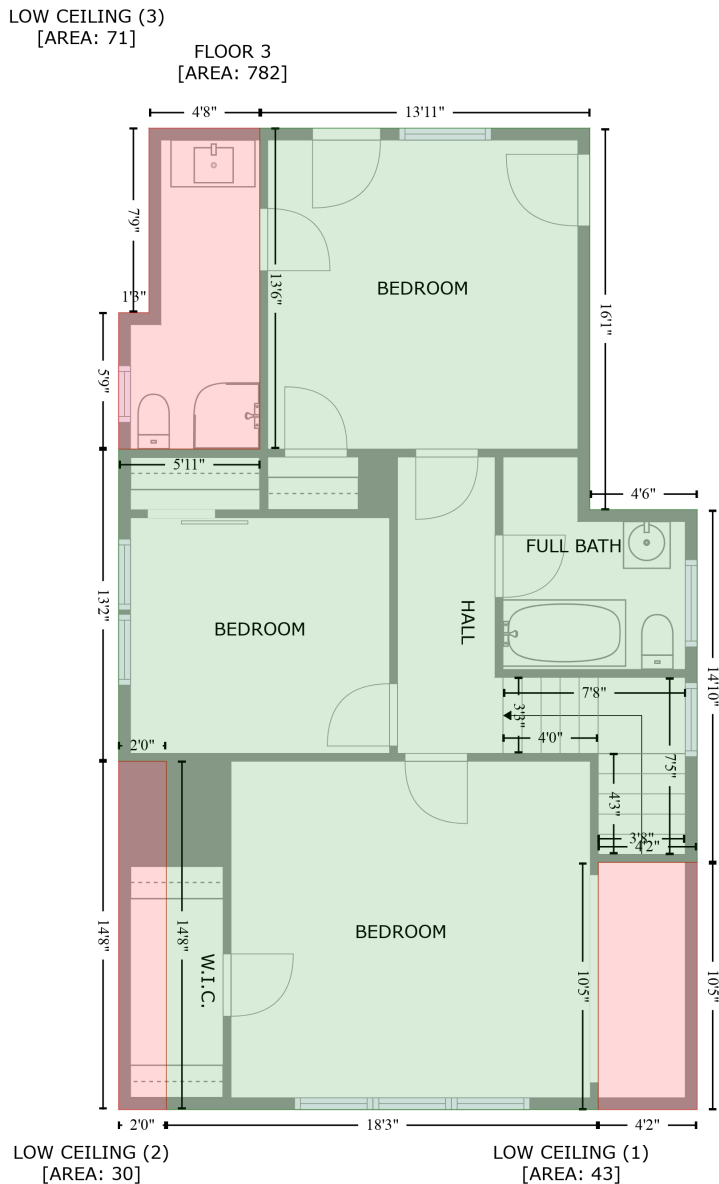
3847 Irving St, Denver, Colorado, United States

Gross Living Area: 1603 sq. ft

Space	Area (sq. ft)	Calculation <small>Coordinate Polygon Area Algorithm using inches</small>
LOW CEILING (Non-living area)	104	$-\left((351.1 + 351.1) * (-70.2 - -64.2) + (351.1 + 355.1) * (-64.2 - -64.2) + (355.1 + 355.1) * (-64.2 - 3.9) + (355.1 + 152.7) * (3.9 - 3.9) + (152.7 + 152.7) * (3.9 - -70.2) + (152.7 + 351.1) * (-70.2 - -70.2)\right) * 0.5 * 0.00694$
LOW CEILING (Non-living area)	47	$-\left((445.4 + 445.4) * (-70.2 - 3.9) + (445.4 + 355.1) * (3.9 - 3.9) + (355.1 + 355.1) * (3.9 - -64.2) + (355.1 + 351.1) * (-64.2 - -64.2) + (351.1 + 351.1) * (-64.2 - -70.2) + (351.1 + 445.4) * (-70.2 - -70.2)\right) * 0.5 * 0.00694$

3847 Irving St, Denver, Colorado, United States

Gross Living Area: 1603 sq. ft



Space	Area (sq. ft)	Calculation <small>Coordinate Polygon Area Algorithm using inches</small>
FLOOR 3 (Living area)	782	$-\left((381.7 + 381.7) * (-10 - 182.9) + (381.7 + 436.1) * (182.9 - 182.9) + (436.1 + 436.1) * (182.9 - 361.2) + (436.1 + 386) * (361.2 - 361.2) + (386 + 386) * (361.2 - 486.2) + (386 + 167.5) * (486.2 - 486.2) + (167.5 + 167.5) * (486.2 - 310.1) + (167.5 + 143.4) * (310.1 - 310.1) + (143.4 + 143.4) * (310.1 - 152.3) + (143.4 + 214.8) * (152.3 - 152.3) + (214.8 + 214.8) * (152.3 - -10) + (214.8 + 381.7) * (-10 - -10)) * 0.5 * 0.00694$
LOW CEILING	43	$-\left((436.1 + 436.1) * (361.2 - 486.2) + (436.1 + 386) * (486.2 - 486.2) + (386 + 386) * (486.2 -$

3847 Irving St, Denver, Colorado, United States

Gross Living Area: 1603 sq. ft

Space	Area (sq. ft)	Calculation <small>Coordinate Polygon Area Algorithm using inches</small>
(Non-living area)		$361.2 + (386 + 436.1) * (361.2 - 361.2) * 0.5 * 0.00694$
LOW CEILING (Non-living area)	30	$-((167.5 + 167.5) * (310.1 - 486.2) + (167.5 + 143.4) * (486.2 - 486.2) + (143.4 + 143.4) * (486.2 - 310.1) + (143.4 + 167.5) * (310.1 - 310.1)) * 0.5 * 0.00694$
LOW CEILING (Non-living area)	71	$-((214.8 + 214.8) * (-10 - 152.3) + (214.8 + 143.4) * (152.3 - 152.3) + (143.4 + 143.4) * (152.3 - 83.3) + (143.4 + 158.7) * (83.3 - 83.3) + (158.7 + 158.7) * (83.3 - -10) + (158.7 + 214.8) * (-10 - -10)) * 0.5 * 0.00694$