

# 154 Woodridge Road, Marlborough, Middlesex County, Massachusetts, United States, 01752



## Property Summary

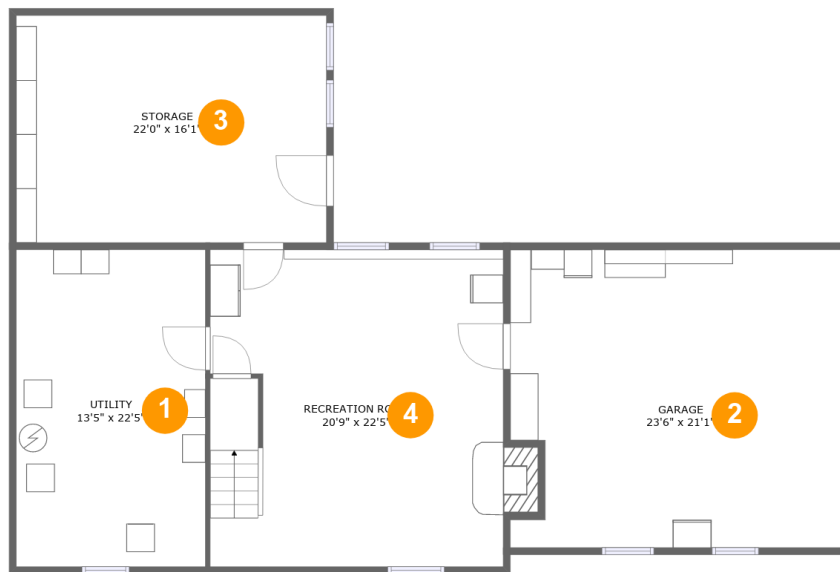
**1** garages    **4** bedrooms    **3** bathrooms    **1** half baths

**3** floors

**3,298** Gross Living Area sqft

**4,723** total sqft

# 154 Woodridge Road, Marlborough, Middlesex County, Massachusetts, United States, 01752

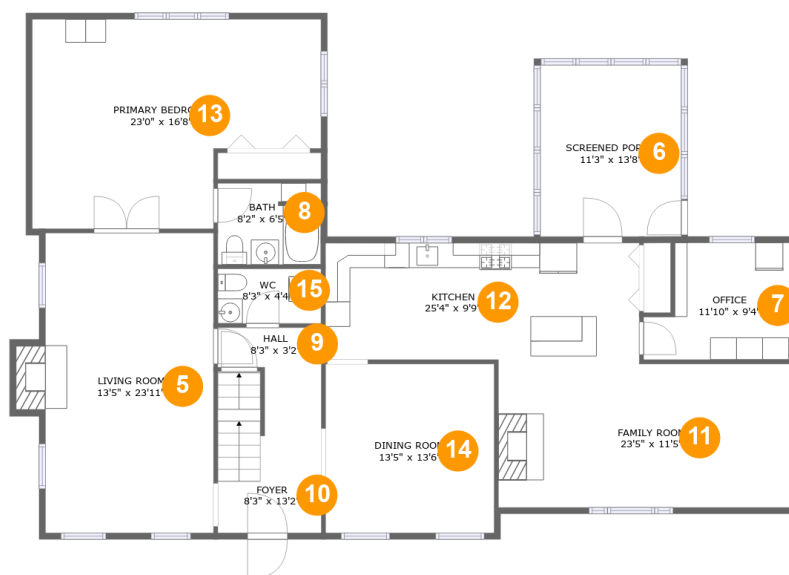


## Room Dimensions

**Floor 1****Total sqft: 1743****Living area: 506**

#	Room name	Dimensions	Area (sqft)	Counted as Living Area
1	Utility	13'5" x 22'5"	301 sq. ft	No
2	Garage	23'6" x 21'1"	481 sq. ft	No
3	Storage	22'0" x 16'1"	354 sq. ft	No
4	Recreation Room	20'9" x 22'5"	475 sq. ft	Yes

# 154 Woodridge Road, Marlborough, Middlesex County, Massachusetts, United States, 01752



## Room Dimensions

Floor 2

Total sqft: 2028

Living area: 1840

#	Room name	Dimensions	Area (sqft)	Counted as Living Area
5	Living Room	13'5" x 23'11"	333 sq. ft	Yes
6	Screened Porch	11'3" x 13'8"	154 sq. ft	No
7	Office	11'10" x 9'4"	95 sq. ft	Yes
8	Bath	8'2" x 6'5"	52 sq. ft	Yes
9	Hall	8'3" x 3'2"	26 sq. ft	Yes
10	Foyer	8'3" x 13'2"	106 sq. ft	Yes
11	Family Room	23'5" x 11'5"	266 sq. ft	Yes
12	Kitchen	25'4" x 9'9"	239 sq. ft	Yes
13	Primary Bedroom	23'0" x 16'8"	330 sq. ft	Yes
14	Dining Room	13'5" x 13'6"	181 sq. ft	Yes
15	Wc	8'3" x 4'4"	36 sq. ft	Yes

Scan captured on Fri, 11 Oct 2024 20:11:01 GMT

Information is calculated by CubiCasa technology; deemed highly reliable but not guaranteed.

# 154 Woodridge Road, Marlborough, Middlesex County, Massachusetts, United States, 01752



## Room Dimensions

Floor 3

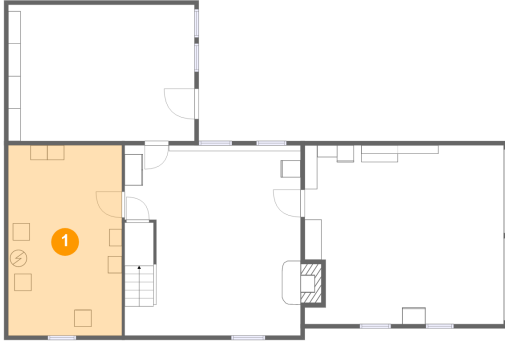
Total sqft: 952

Living area: 952

#	Room name	Dimensions	Area (sqft)	Counted as Living Area
16	Bedroom	19'9" x 13'2"	223 sq. ft	Yes
17	W.i.c.	5'7" x 6'11"	39 sq. ft	Yes
18	Bedroom	13'8" x 11'4"	155 sq. ft	Yes
19	Bath	7'6" x 6'11"	41 sq. ft	Yes
20	Bedroom	13'5" x 17'7"	236 sq. ft	Yes
21	Bath	8'0" x 6'11"	48 sq. ft	Yes
22	Hall	8'0" x 4'1"	58 sq. ft	Yes

# 154 Woodridge Road, Marlborough, Middlesex County, Massachusetts, United States, 01752

## 1 Floor 1 - Utility



Dimensions: 13'5" x 22'5"  
Area: 301 sq. ft  
Counted as Living Area: No

Heated: Yes  
Finished: No  
Enclosed: Yes  
Contiguous: Yes  
Permitted: Yes  
Wet Space: No  
Addition: No  
Conversion: No

## 2 Floor 1 - Garage

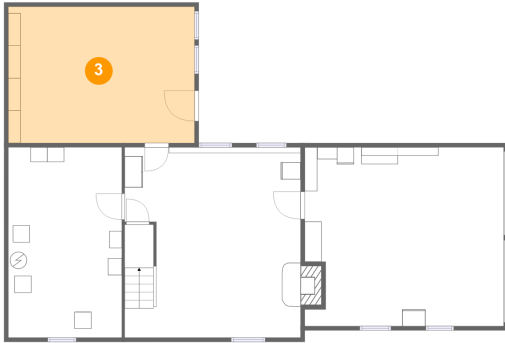


Dimensions: 23'6" x 21'1"  
Area: 481 sq. ft  
Counted as Living Area: No

Heated: No  
Finished: No  
Enclosed: Yes  
Contiguous: Yes  
Permitted: Yes  
Wet Space: No  
Addition: No  
Conversion: No

# 154 Woodridge Road, Marlborough, Middlesex County, Massachusetts, United States, 01752

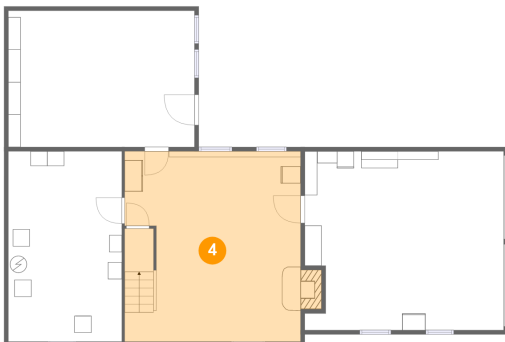
## 3 Floor 1 - Storage



Dimensions: 22'0" x 16'1"  
Area: 354 sq. ft  
Counted as Living Area: No

Heated: No  
Finished: No  
Enclosed: No  
Contiguous: Yes  
Permitted: Yes  
Wet Space: No  
Addition: No  
Conversion: No

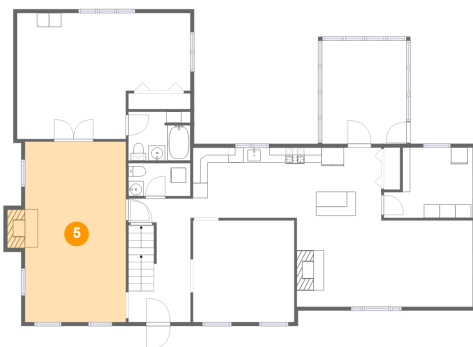
## 4 Floor 1 - Recreation Room



Dimensions: 20'9" x 22'5"  
Area: 475 sq. ft  
Counted as Living Area: Yes

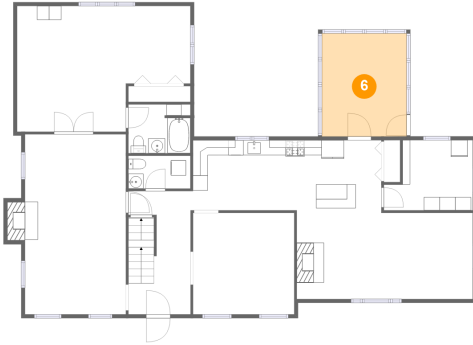
Heated: Yes  
Finished: Yes  
Enclosed: Yes  
Contiguous: Yes  
Permitted: Yes  
Wet Space: No  
Addition: No  
Conversion: No

## 5 Floor 2 - Living Room



Dimensions: 13'5" x 23'11"  
Area: 333 sq. ft  
Counted as Living Area: Yes

Heated: Yes  
Finished: Yes  
Enclosed: Yes  
Contiguous: Yes  
Permitted: Yes  
Wet Space: No  
Addition: No  
Conversion: No

**154 Woodridge Road, Marlborough, Middlesex  
County, Massachusetts, United States, 01752****6 Floor 2 - Screened Porch**

Dimensions: 11'3" x 13'8"  
Area: 154 sq. ft  
Counted as Living Area: No

Heated: No  
Finished: Yes  
Enclosed: No  
Contiguous: Yes  
Permitted: Yes  
Wet Space: No  
Addition: No  
Conversion: No

**7 Floor 2 - Office**

Dimensions: 11'10" x 9'4"  
Area: 95 sq. ft  
Counted as Living Area:  
Yes

Heated: Yes  
Finished: Yes  
Enclosed: Yes  
Contiguous:  
Yes  
Permitted: Yes  
Wet Space: No  
Addition: No  
Conversion: No

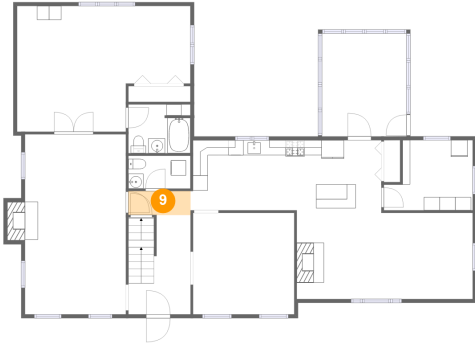
**8 Floor 2 - Bath**

Dimensions: 8'2" x 6'5"  
Area: 52 sq. ft  
Counted as Living Area:  
Yes

Heated: Yes  
Finished: Yes  
Enclosed: Yes  
Contiguous:  
Yes  
Permitted: Yes  
Wet Space: Yes  
Addition: No  
Conversion: No

# 154 Woodridge Road, Marlborough, Middlesex County, Massachusetts, United States, 01752

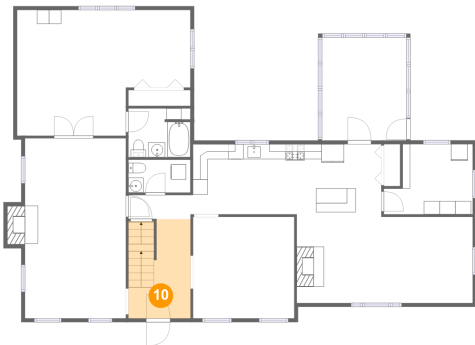
## 9 Floor 2 - Hall



Dimensions: 8'3" x 3'2"  
Area: 26 sq. ft  
Counted as Living Area:  
Yes

Heated: Yes  
Finished: Yes  
Enclosed: Yes  
Contiguous:  
Yes  
Permitted: Yes  
Wet Space: No  
Addition: No  
Conversion: No

## 10 Floor 2 - Foyer



Dimensions: 8'3" x 13'2"  
Area: 106 sq. ft  
Counted as Living Area:  
Yes

Heated: Yes  
Finished: Yes  
Enclosed: Yes  
Contiguous:  
Yes  
Permitted: Yes  
Wet Space: No  
Addition: No  
Conversion: No

## 11 Floor 2 - Family Room



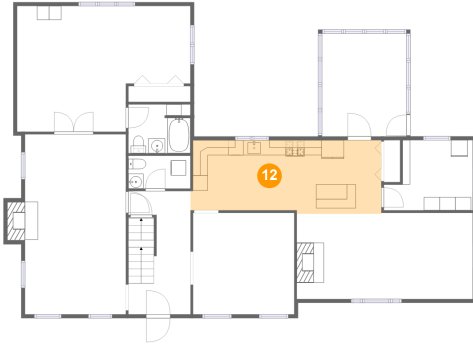
Dimensions: 23'5" x 11'5"  
Area: 266 sq. ft  
Counted as Living Area:  
Yes

Heated: Yes  
Finished: Yes  
Enclosed: Yes  
Contiguous:  
Yes  
Permitted: Yes  
Wet Space: No  
Addition: No  
Conversion: No



# 154 Woodridge Road, Marlborough, Middlesex County, Massachusetts, United States, 01752

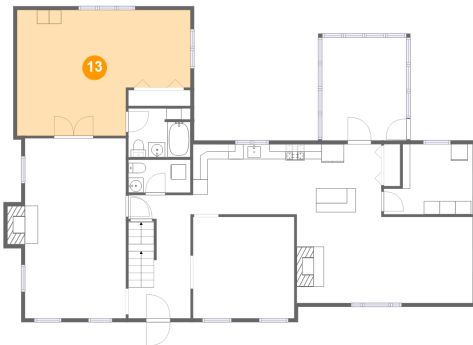
## 12 Floor 2 - Kitchen



Dimensions: 25'4" x 9'9"  
Area: 239 sq. ft  
Counted as Living Area:  
Yes

Heated: Yes  
Finished: Yes  
Enclosed: Yes  
Contiguous:  
Yes  
Permitted: Yes  
Wet Space: No  
Addition: No  
Conversion: No

## 13 Floor 2 - Primary Bedroom



Dimensions: 23'0" x 16'8"  
Area: 330 sq. ft  
Counted as Living Area:  
Yes

Heated: Yes  
Finished: Yes  
Enclosed: Yes  
Contiguous:  
Yes  
Permitted: Yes  
Wet Space: No  
Addition: No  
Conversion: No

## 14 Floor 2 - Dining Room

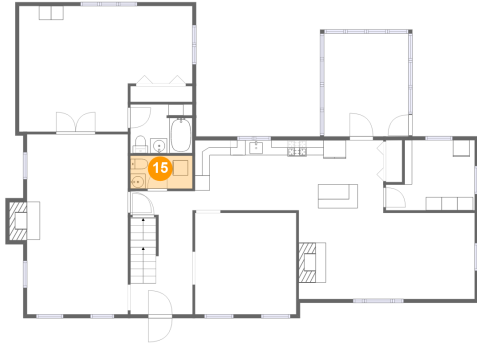


Dimensions: 13'5" x 13'6"  
Area: 181 sq. ft  
Counted as Living Area:  
Yes

Heated: Yes  
Finished: Yes  
Enclosed: Yes  
Contiguous:  
Yes  
Permitted: Yes  
Wet Space: No  
Addition: No  
Conversion: No

# 154 Woodridge Road, Marlborough, Middlesex County, Massachusetts, United States, 01752

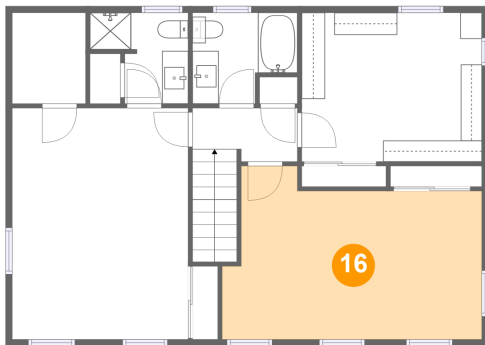
## 15 Floor 2 - Wc



Dimensions: 8'3" x 4'4"  
Area: 36 sq. ft  
Counted as Living Area:  
Yes

Heated: Yes  
Finished: Yes  
Enclosed: Yes  
Contiguous:  
Yes  
Permitted: Yes  
Wet Space: Yes  
Addition: No  
Conversion: No

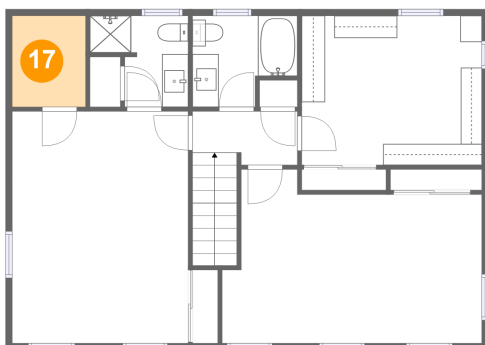
## 16 Floor 3 - Bedroom



Dimensions: 19'9" x 13'2"  
Area: 223 sq. ft  
Counted as Living Area:  
Yes

Heated: Yes  
Finished: Yes  
Enclosed: Yes  
Contiguous:  
Yes  
Permitted: Yes  
Wet Space: No  
Addition: No  
Conversion: No

## 17 Floor 3 - W.i.c.

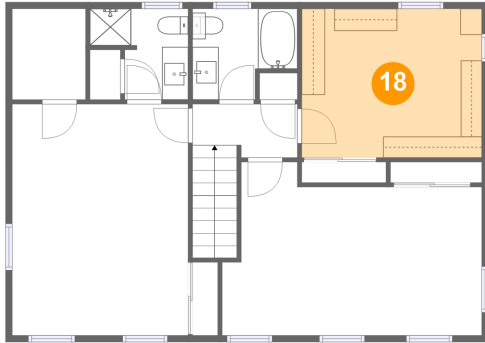


Dimensions: 5'7" x 6'11"  
Area: 39 sq. ft  
Counted as Living Area:  
Yes

Heated: Yes  
Finished: Yes  
Enclosed: Yes  
Contiguous:  
Yes  
Permitted: Yes  
Wet Space: No  
Addition: No  
Conversion: No

# 154 Woodridge Road, Marlborough, Middlesex County, Massachusetts, United States, 01752

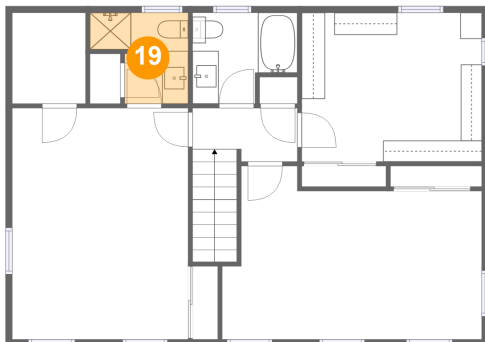
## 18 Floor 3 - Bedroom



Dimensions: 13'8" x 11'4"  
Area: 155 sq. ft  
Counted as Living Area:  
Yes

Heated: Yes  
Finished: Yes  
Enclosed: Yes  
Contiguous:  
Yes  
Permitted: Yes  
Wet Space: No  
Addition: No  
Conversion: No

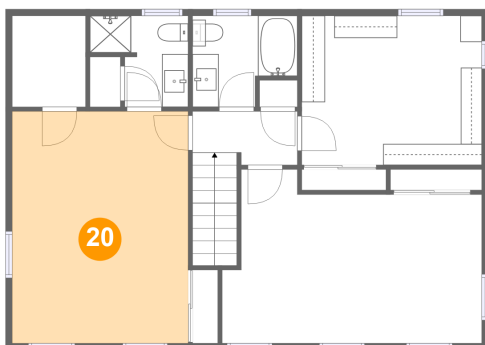
## 19 Floor 3 - Bath



Dimensions: 7'6" x 6'11"  
Area: 41 sq. ft  
Counted as Living Area:  
Yes

Heated: Yes  
Finished: Yes  
Enclosed: Yes  
Contiguous:  
Yes  
Permitted: Yes  
Wet Space: Yes  
Addition: No  
Conversion: No

## 20 Floor 3 - Bedroom

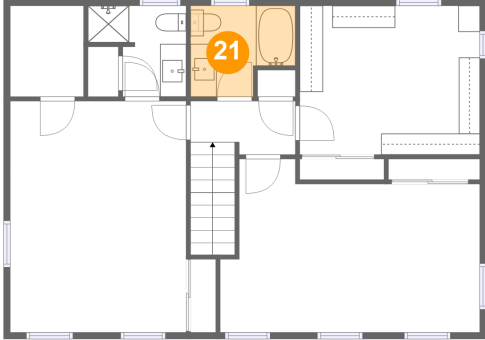


Dimensions: 13'5" x 17'7"  
Area: 236 sq. ft  
Counted as Living Area:  
Yes

Heated: Yes  
Finished: Yes  
Enclosed: Yes  
Contiguous:  
Yes  
Permitted: Yes  
Wet Space: No  
Addition: No  
Conversion: No

# 154 Woodridge Road, Marlborough, Middlesex County, Massachusetts, United States, 01752

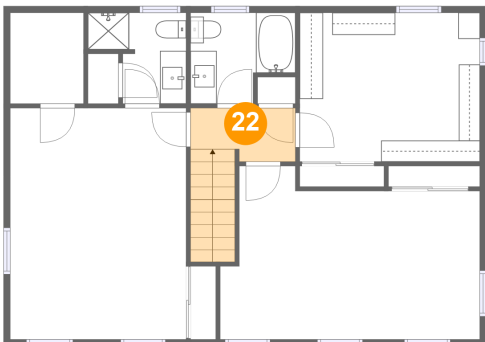
## 21 Floor 3 - Bath



Dimensions: 8'0" x 6'11"  
Area: 48 sq. ft  
Counted as Living Area:  
Yes

Heated: Yes  
Finished: Yes  
Enclosed: Yes  
Contiguous:  
Yes  
Permitted: Yes  
Wet Space: Yes  
Addition: No  
Conversion: No

## 22 Floor 3 - Hall



Dimensions: 8'0" x 4'1"  
Area: 58 sq. ft  
Counted as Living Area:  
Yes

Heated: Yes  
Finished: Yes  
Enclosed: Yes  
Contiguous:  
Yes  
Permitted: Yes  
Wet Space: No  
Addition: No  
Conversion: No