


Home report


2430 Windmill Dr,Spearfish,SD,US





Total Area: 930 sq. ft
Below Ground: 930 sq. ft, Floor 2: 930 sq. ft
Excluded: Garage 297 sq. ft, Walls: 169 sq. ft

Property summary

 **2** Floors

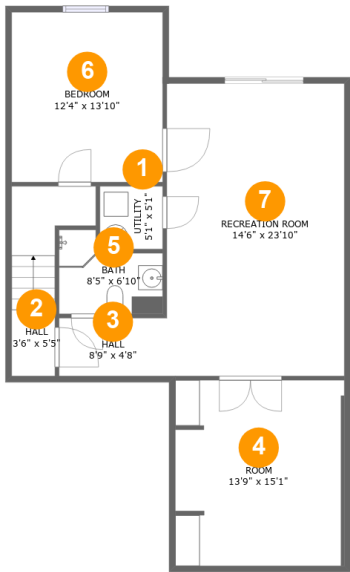
 **3** Bedrooms

 **2** Bathrooms

 **1** Garages

Home report

2430 Windmill Dr,Spearfish,SD,US



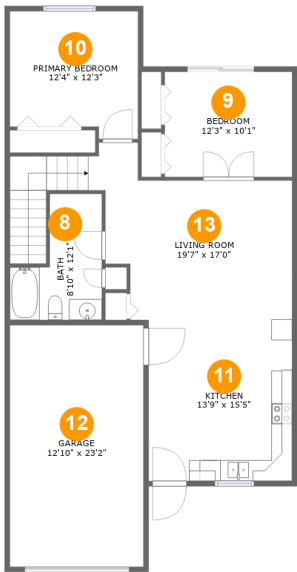
Room dimensions

Floor 1 Below ground Total:930sqft Excluded: 0sqft

#		Max Dimensions	sqft	Included
1	Utility	5'1" x 5'1"	26 sq. ft	Yes
2	Hall	3'6" x 5'5"	65 sq. ft	Yes
3	Hall	8'9" x 4'8"	41 sq. ft	Yes
4	Room	13'9" x 15'1"	207 sq. ft	Yes
5	Bath	8'5" x 6'10"	47 sq. ft	Yes
6	Bedroom	12'4" x 13'10"	170 sq. ft	Yes
7	Recreation Room	14'6" x 23'10"	344 sq. ft	Yes

Home report

2430 Windmill Dr,Spearfish,SD,US

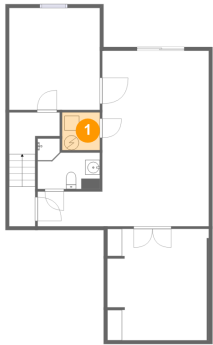


Room dimensions

Floor 2 Total:930sqft Excluded: 297sqft

#		Max Dimensions	sqft	Included
8	Bath	8'10" x 12'1"	80 sq. ft	Yes
9	Bedroom	12'3" x 10'1"	124 sq. ft	Yes
10	Primary Bedroom	12'4" x 12'3"	141 sq. ft	Yes
11	Kitchen	13'9" x 15'5"	213 sq. ft	Yes
12	Garage	12'10" x 23'2"	297 sq. ft	No
13	Living Room	19'7" x 17'0"	294 sq. ft	Yes

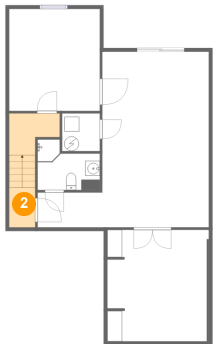
1 Floor 1 - Utility



Max Dimensions: 5'1" x 5'1"
Calculated Area: 26 sq. ft
Included: Yes

Heated: Yes
Finished: Yes
Enclosed: Yes
Contiguous: Yes
Permitted: Yes
Wet space: No
Addition: No
Conversion: No

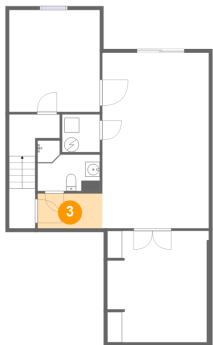
2 Floor 1 - Hall



Max Dimensions: 3'6" x 5'5"
Calculated Area: 65 sq. ft
Included: Yes

Heated: Yes
Finished: Yes
Enclosed: Yes
Contiguous: Yes
Permitted: Yes
Wet space: No
Addition: No
Conversion: No

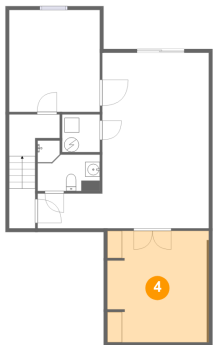
3 Floor 1 - Hall



Max Dimensions: 8'9" x 4'8"
Calculated Area: 41 sq. ft
Included: Yes

Heated: Yes
Finished: Yes
Enclosed: Yes
Contiguous: Yes
Permitted: Yes
Wet space: No
Addition: No
Conversion: No

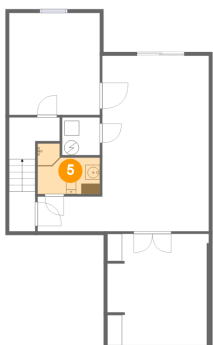
4 Floor 1 - Room



Max Dimensions: 13'9" x 15'1"
Calculated Area: 207 sq. ft
Included: Yes

Heated: Yes
Finished: Yes
Enclosed: Yes
Contiguous: Yes
Permitted: Yes
Wet space: No
Addition: No
Conversion: No

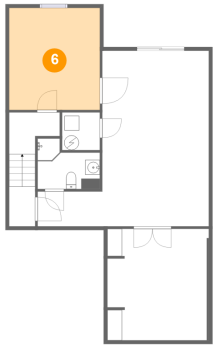
5 Floor 1 - Bath



Max Dimensions: 8'5" x 6'10"
Calculated Area: 47 sq. ft
Included: Yes

Heated: Yes
Finished: Yes
Enclosed: Yes
Contiguous: Yes
Permitted: Yes
Wet space: Yes
Addition: No
Conversion: No

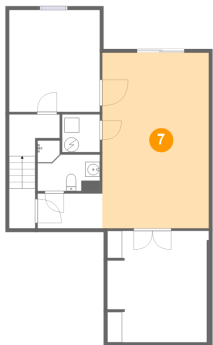
6 Floor 1 - Bedroom



Max Dimensions: 12'4" x 13'10"
Calculated Area: 170 sq. ft
Included: Yes

Heated: Yes
Finished: Yes
Enclosed: Yes
Contiguous: Yes
Permitted: Yes
Wet space: No
Addition: No
Conversion: No

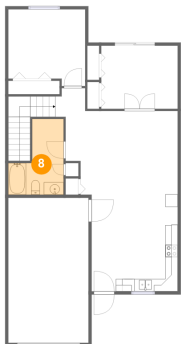
7 Floor 1 - Recreation Room



Max Dimensions: 14'6" x 23'10"
Calculated Area: 344 sq. ft
Included: Yes

Heated: Yes
Finished: Yes
Enclosed: Yes
Contiguous: Yes
Permitted: Yes
Wet space: No
Addition: No
Conversion: No

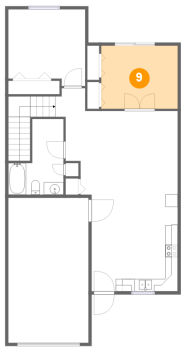
8 Floor 2 - Bath



Max Dimensions: 8'10" x 12'1"
Calculated Area: 80 sq. ft
Included: Yes

Heated: Yes
Finished: Yes
Enclosed: Yes
Contiguous: Yes
Permitted: Yes
Wet space: Yes
Addition: No
Conversion: No

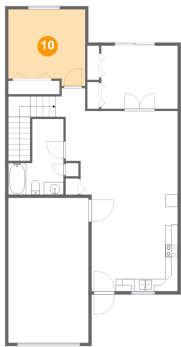
9 Floor 2 - Bedroom



Max Dimensions: 12'3" x 10'1"
Calculated Area: 124 sq. ft
Included: Yes

Heated: Yes
Finished: Yes
Enclosed: Yes
Contiguous: Yes
Permitted: Yes
Wet space: No
Addition: No
Conversion: No

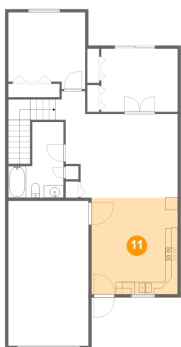
10 Floor 2 - Primary Bedroom



Max Dimensions: 12'4" x 12'3"
Calculated Area: 141 sq. ft
Included: Yes

Heated: Yes
Finished: Yes
Enclosed: Yes
Contiguous: Yes
Permitted: Yes
Wet space: No
Addition: No
Conversion: No

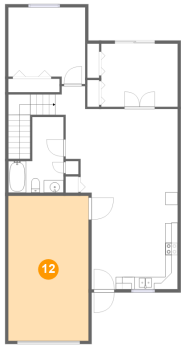
11 Floor 2 - Kitchen



Max Dimensions: 13'9" x 15'5"
Calculated Area: 213 sq. ft
Included: Yes

Heated: Yes
Finished: Yes
Enclosed: Yes
Contiguous: Yes
Permitted: Yes
Wet space: No
Addition: No
Conversion: No

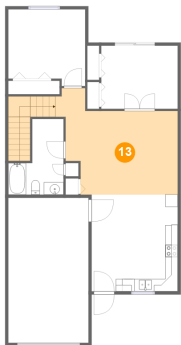
12 Floor 2 - Garage



Max Dimensions: 12'10" x 23'2"
Calculated Area: 297 sq. ft
Included: No

Heated: No
Finished: No
Enclosed: Yes
Contiguous: Yes
Permitted: Yes
Wet space: No
Addition: No
Conversion: No

13 Floor 2 - Living Room



Max Dimensions: 19'7" x 17'0"
Calculated Area: 294 sq. ft
Included: Yes

Heated: Yes
Finished: Yes
Enclosed: Yes
Contiguous: Yes
Permitted: Yes
Wet space: No
Addition: No
Conversion: No