



398 LESLIE STREET



Lainey Bonsell & Teresita Link

LTHOME.ca

Bringing your dreams home.

ROYAL LEPAGE
Estate Realty
BRIDGEWAY INDEPENDENTLY OWNED AND OPERATED



For more information on
398 LESLIE STREET



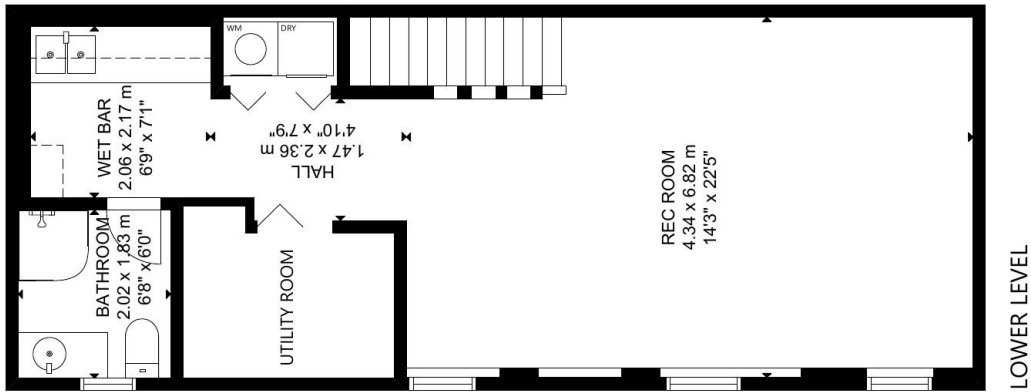
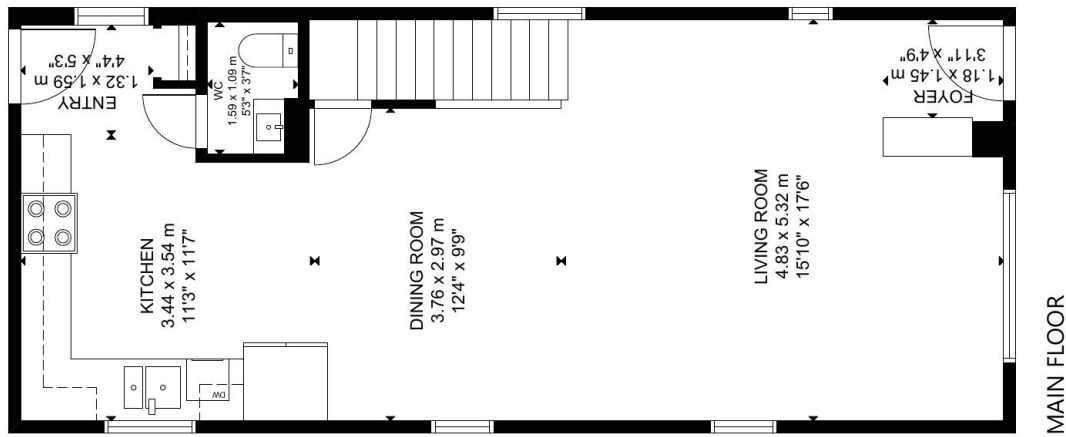
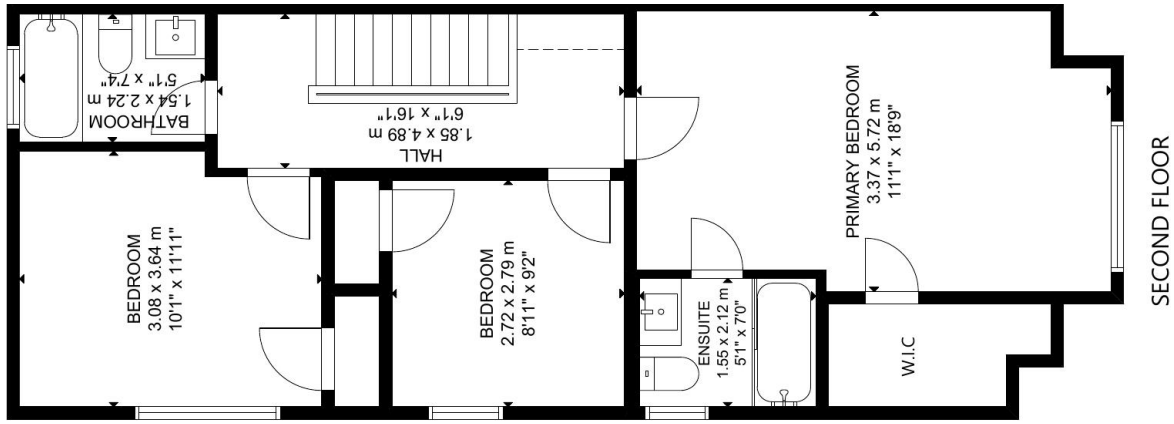
Details:

Welcome to South Riverdale on the edge of Leslieville! The detached home you have been waiting for on a quiet stretch of Leslie! Parking for 3 cars off the lane, maintenance free landscaped back deck & interlock, perfect for entertaining. Grow your home into the large front yard, or move in and enjoy all the open concept bright space, windows all around and filled with pot lights! Primary bedroom features a walk-in closet and a full ensuite.



Visit www.LTHome.ca





GROSS INTERNAL AREA
 MAIN FLOOR: 57 m²/613 sq ft, SECOND FLOOR: 60 m²/651 sq ft
 LOWER LEVEL: 49 m²/529 sq ft
 TOTAL: 166 m²/1,793 sq ft
 SIZE AND DIMENSIONS ARE APPROXIMATE, ACTUAL MAY VARY.

Not intended to solicit buyers or sellers currently under contract with another Brokerage



Lainey Bonsell & Teresita Link

LTHOME.ca

Bringing your dreams home.

Presented by:

Teresita Link, Broker

Royal LePage Estate Realty, Brokerage

Teresita@LTHome.ca

416-400-6211