

Basement
60'1" x 30'3" 1361 Sq. Ft

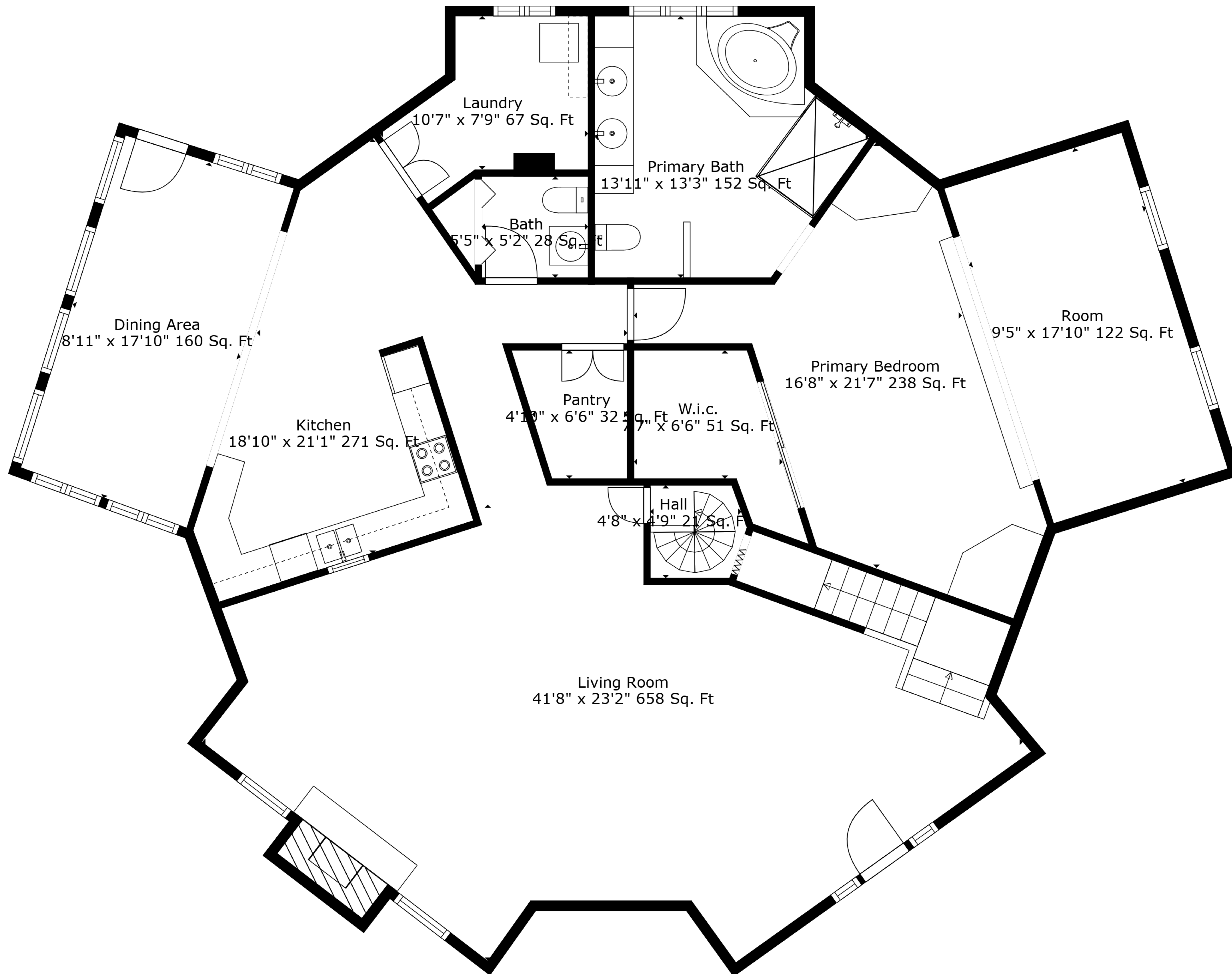
Room
7'3" x 10'4" 76 Sq. Ft

Basement
38'2" x 17'4" 448 Sq. Ft

TOTAL: 2599 sq. ft

BELOW GROUND: 88 sq. ft, FLOOR 2: 1864 sq. ft, FLOOR 3: 647 sq. ft
EXCLUDED AREAS: BASEMENT: 1809 sq. ft, LOW CEILING: 176 sq. ft, FIREPLACE: 3 sq. ft,
OPEN TO BELOW: 581 sq. ft

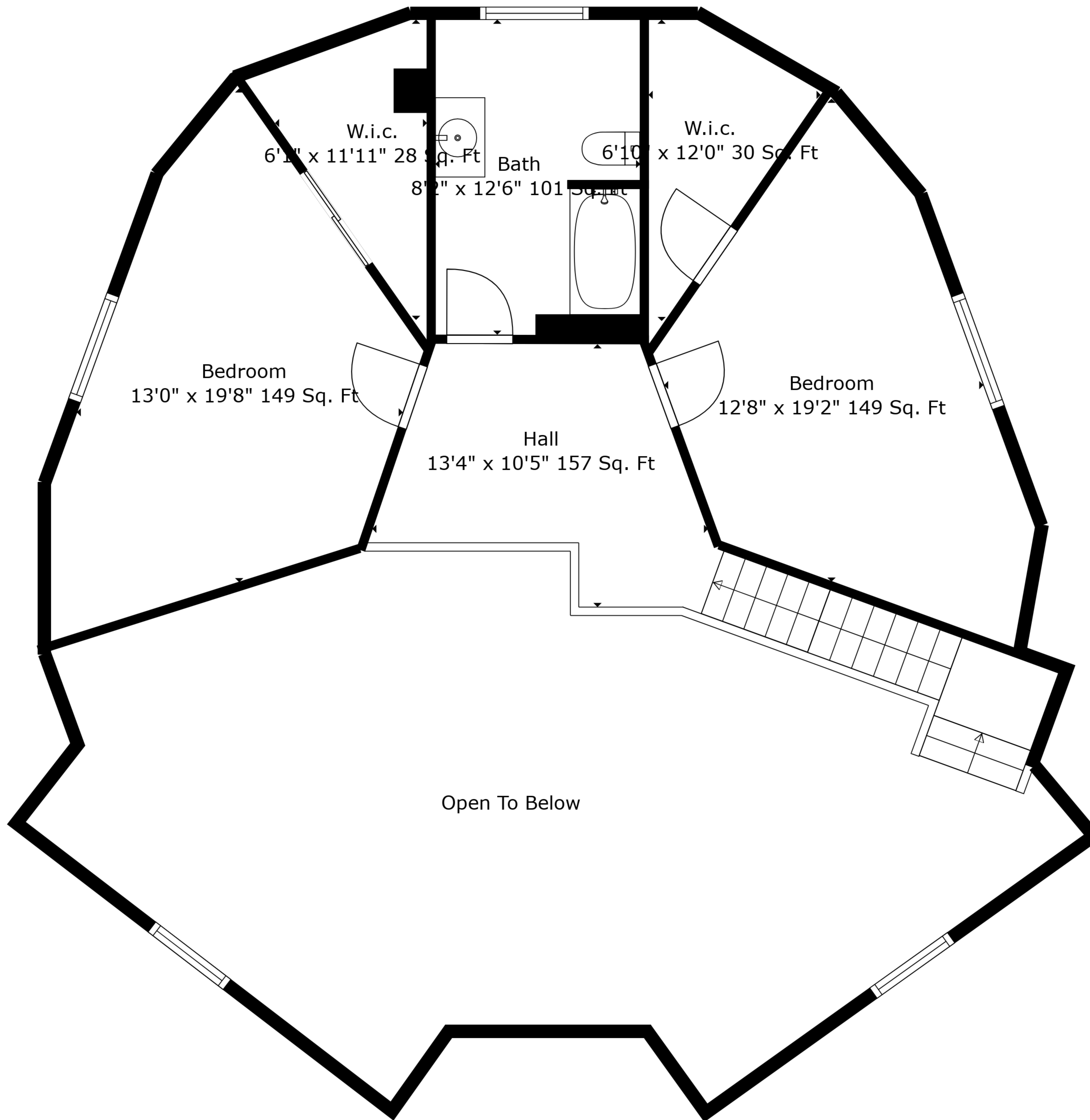
Measurements Are Deemed Highly Reliable But Not Guaranteed.



TOTAL: 2599 sq. ft

BELOW GROUND: 88 sq. ft, FLOOR 2: 1864 sq. ft, FLOOR 3: 647 sq. ft
 EXCLUDED AREAS: BASEMENT: 1809 sq. ft, LOW CEILING: 176 sq. ft, FIREPLACE: 3 sq. ft,
 OPEN TO BELOW: 581 sq. ft

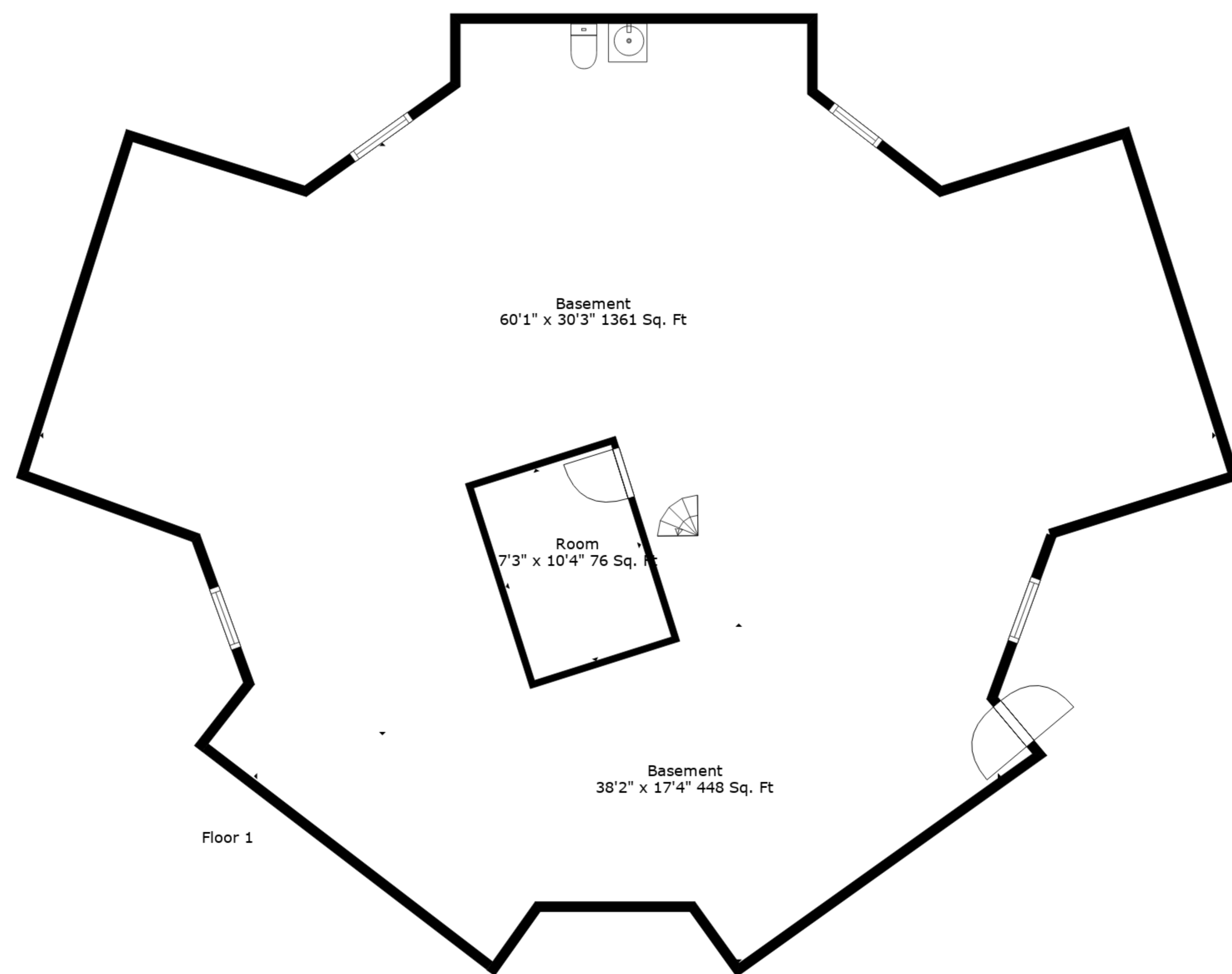
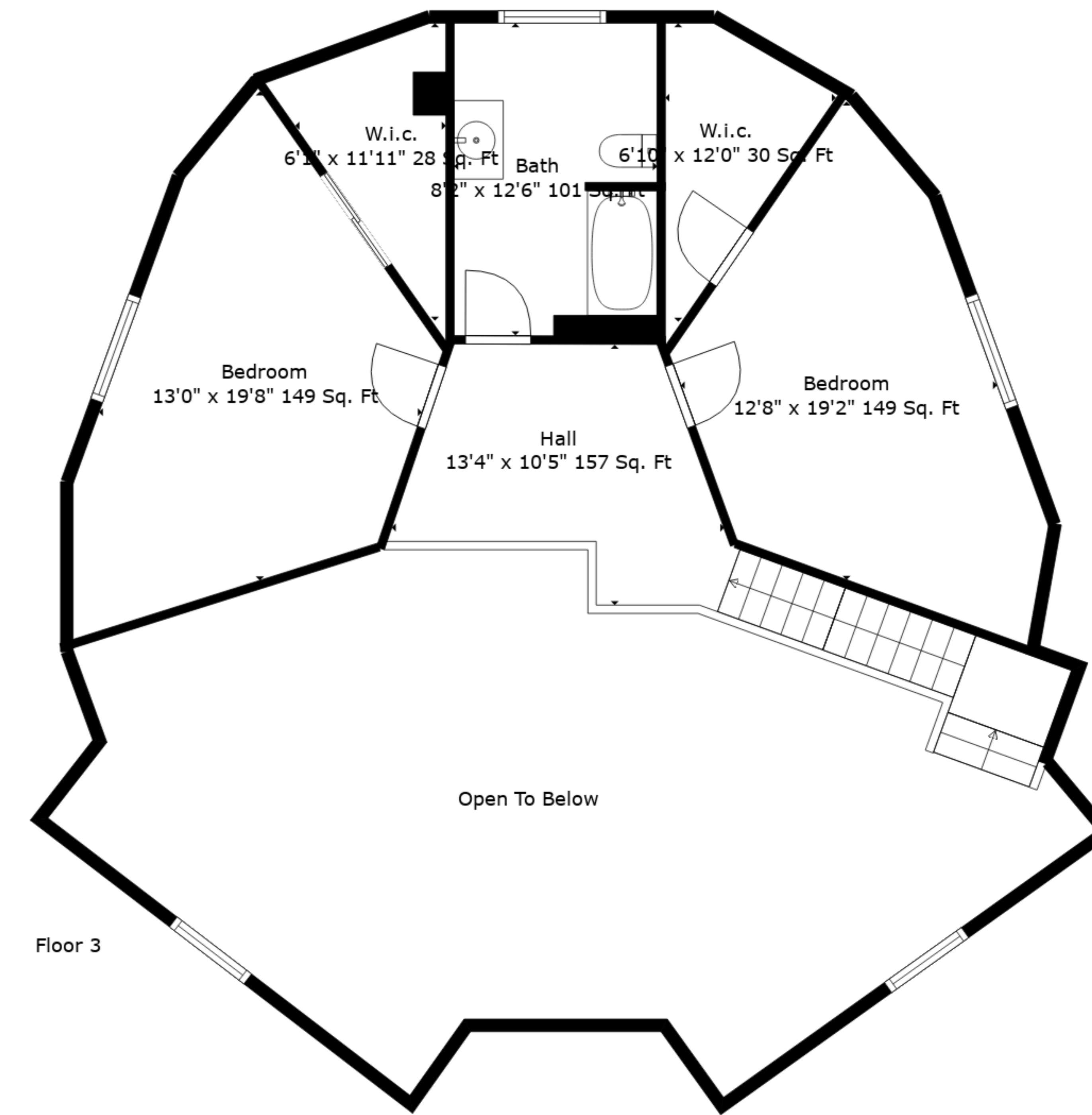
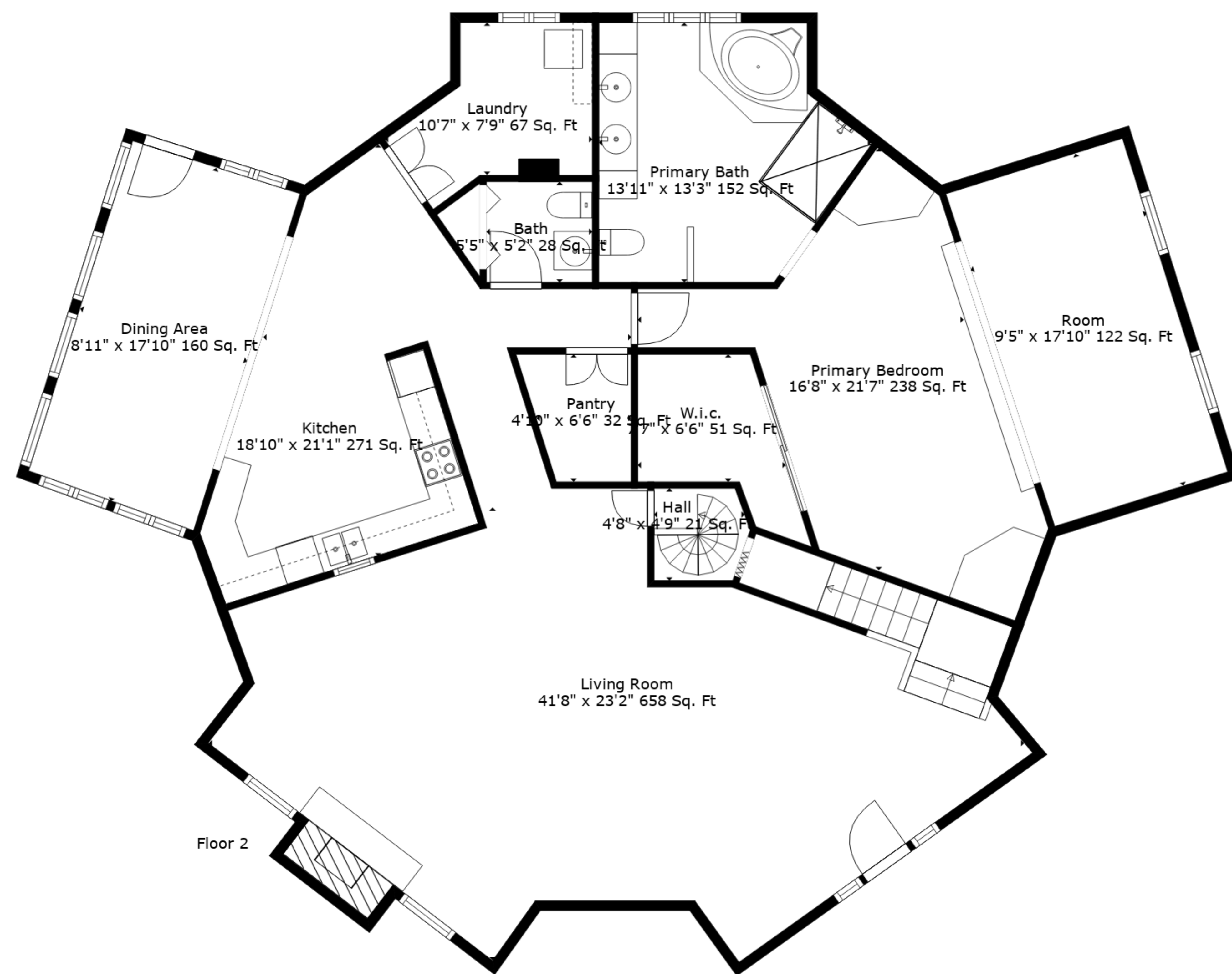
Measurements Are Deemed Highly Reliable But Not Guaranteed.



TOTAL: 2599 sq. ft

BELOW GROUND: 88 sq. ft, FLOOR 2: 1864 sq. ft, FLOOR 3: 647 sq. ft
 EXCLUDED AREAS: BASEMENT: 1809 sq. ft, LOW CEILING: 176 sq. ft, FIREPLACE: 3 sq. ft,
 OPEN TO BELOW: 581 sq. ft

Measurements Are Deemed Highly Reliable But Not Guaranteed.



TOTAL: 2599 sq. ft
 BELOW GROUND: 88 sq. ft, FLOOR 2: 1864 sq. ft, FLOOR 3: 647 sq. ft
 EXCLUDED AREAS: BASEMENT: 1809 sq. ft, LOW CEILING: 176 sq. ft, FIREPLACE: 3 sq. ft,
 OPEN TO BELOW: 581 sq. ft

Measurements Are Deemed Highly Reliable But Not Guaranteed.