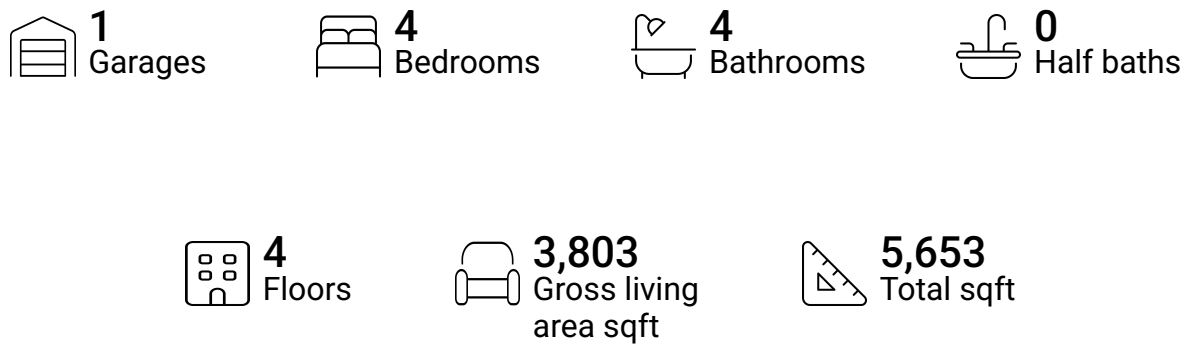


Home report

3114 Clearview Drive,Roanoke,Virginia,United States

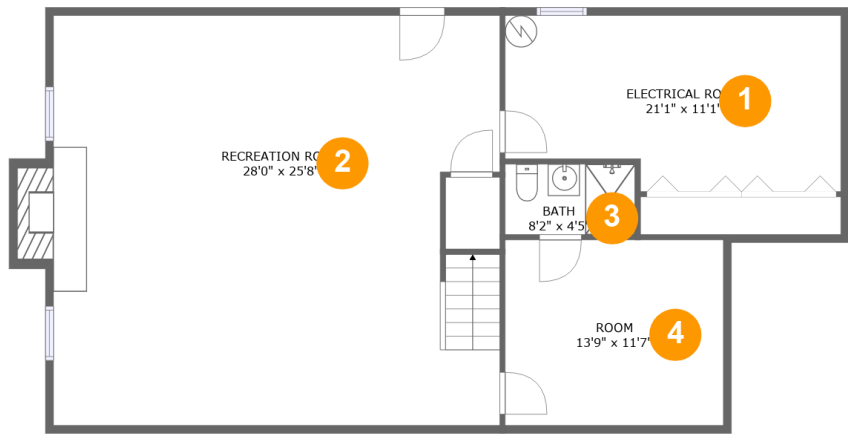


Property summary



Home report

3114 Clearview Drive,Roanoke,Virginia,United States



Room dimensions

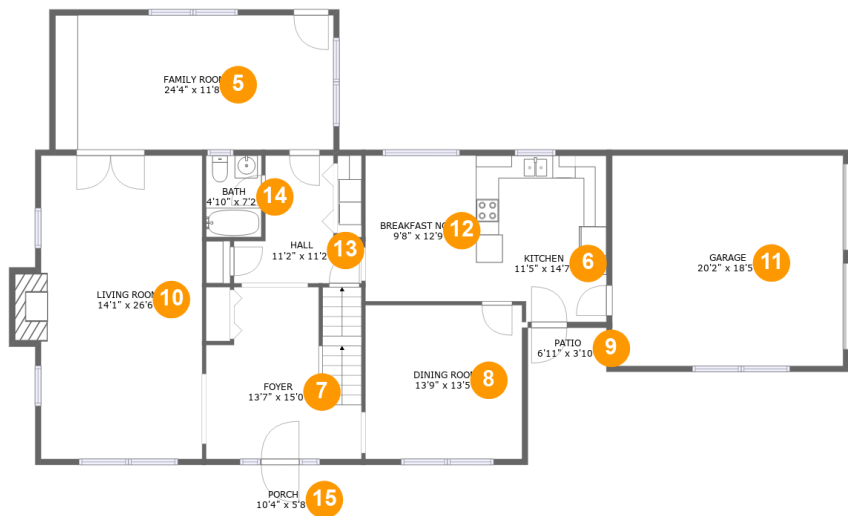
Floor 1

Total sqft: 1276 Living area: 1005

#		Dimensions	sqft	Counted as living area
1	Electrical Room	21'1" x 11'1"	216 sq. ft	No
2	Recreation Room	28'0" x 25'8"	715 sq. ft	Yes
3	Bath	8'2" x 4'5"	36 sq. ft	Yes
4	Room	13'9" x 11'7"	160 sq. ft	Yes

Home report

3114 Clearview Drive,Roanoke,Virginia,United States



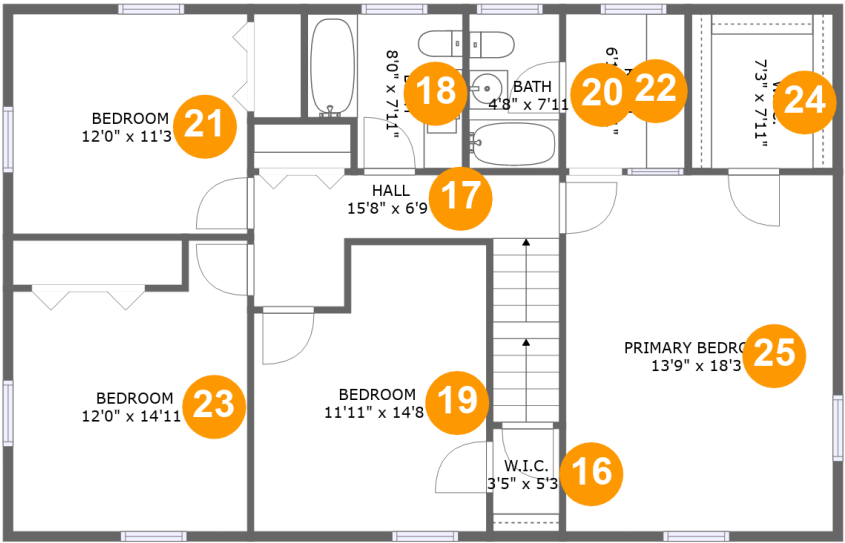
Room dimensions

Floor 2Total sqft: 2117 Living area: 1612

#		Dimensions	sqft	Counted as living area
5	Family Room	24'4" x 11'8"	286 sq. ft	Yes
6	Kitchen	11'5" x 14'7"	158 sq. ft	Yes
7	Foyer	13'7" x 15'0"	190 sq. ft	Yes
8	Dining Room	13'9" x 13'5"	184 sq. ft	Yes
9	Patio	6'11" x 3'10"	26 sq. ft	No
10	Living Room	14'1" x 26'6"	388 sq. ft	Yes
11	Garage	20'2" x 18'5"	372 sq. ft	No
12	Breakfast Nook	9'8" x 12'9"	123 sq. ft	Yes
13	Hall	11'2" x 11'2"	86 sq. ft	Yes
14	Bath	4'10" x 7'2"	35 sq. ft	Yes
15	Porch	10'4" x 5'8"	59 sq. ft	No

Home report

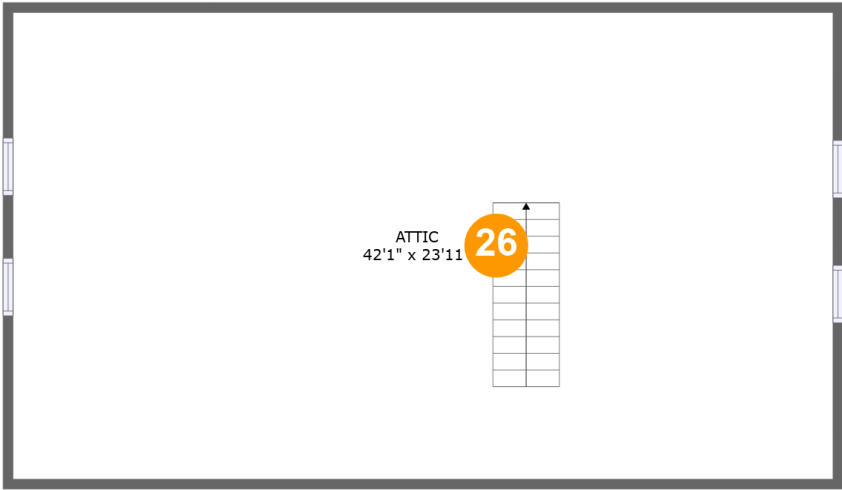
3114 Clearview Drive,Roanoke,Virginia,United States



Room dimensions

Floor 3 Total sqft: 1186 Living area: 1186

#		Dimensions	sqft	Counted as living area
16	W.I.C.	3'5" x 5'3"	18 sq. ft	Yes
17	Hall	15'8" x 6'9"	99 sq. ft	Yes
18	Bath	8'0" x 7'11"	56 sq. ft	Yes
19	Bedroom	11'11" x 14'8"	158 sq. ft	Yes
20	Bath	4'8" x 7'11"	37 sq. ft	Yes
21	Bedroom	12'0" x 11'3"	136 sq. ft	Yes
22	Room	6'1" x 7'11"	48 sq. ft	Yes
23	Bedroom	12'0" x 14'11"	156 sq. ft	Yes
24	W.I.C.	7'3" x 7'11"	58 sq. ft	Yes
25	Primary Bedroom	13'9" x 18'3"	251 sq. ft	Yes



Room dimensions

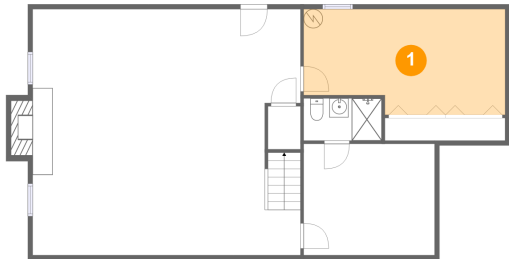
Floor 4

Total sqft: 1074

Living area: 0

#		Dimensions	sqft	Counted as living area
26	Attic	42'1" x 23'11"	437 sq. ft	No

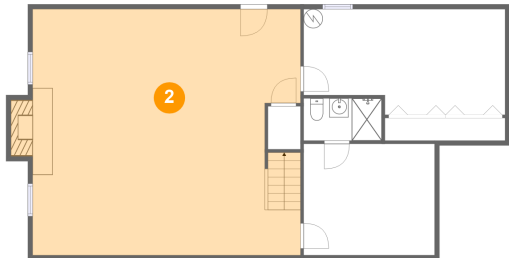
1 Floor 1 - Electrical Room



Dimensions: 21'1" x 11'1"
Area: 216 sq. ft
Counted as living area: No

Heated: No
Finished: No
Enclosed: Yes
Contiguous: Yes
Permitted: Yes
Wet space: No
Addition: No
Conversion: No

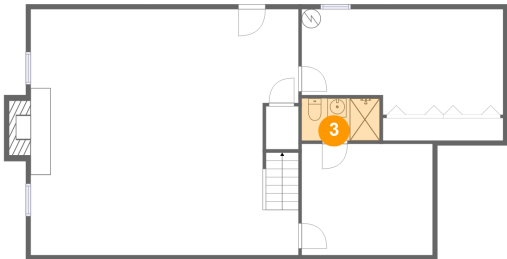
2 Floor 1 - Recreation Room



Dimensions: 28'0" x 25'8"
Area: 715 sq. ft
Counted as living area: Yes

Heated: Yes
Finished: Yes
Enclosed: Yes
Contiguous: Yes
Permitted: Yes
Wet space: No
Addition: No
Conversion: No

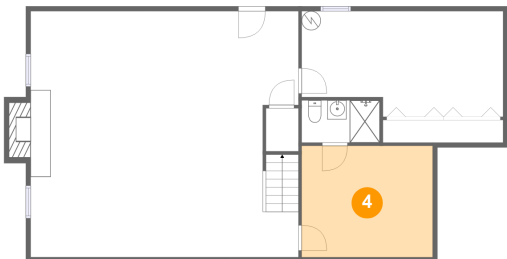
3 Floor 1 - Bath



Dimensions: 8'2" x 4'5"
Area: 36 sq. ft
Counted as living area: Yes

Heated: Yes
Finished: Yes
Enclosed: Yes
Contiguous: Yes
Permitted: Yes
Wet space: Yes
Addition: No
Conversion: No

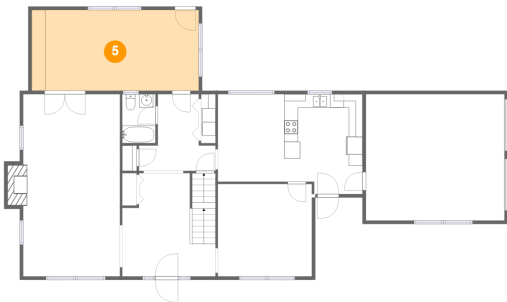
4 Floor 1 - Room



Dimensions: 13'9" x 11'7"
Area: 160 sq. ft
Counted as living area: Yes

Heated: Yes
Finished: Yes
Enclosed: Yes
Contiguous: Yes
Permitted: Yes
Wet space: No
Addition: No
Conversion: No

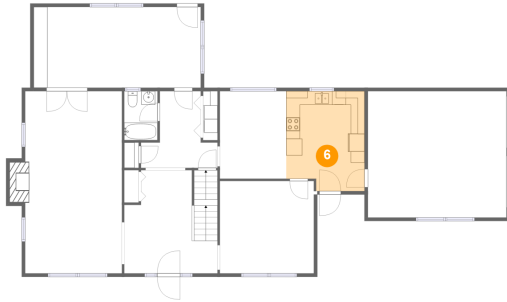
5 Floor 2 - Family Room



Dimensions: 24'4" x 11'8"
Area: 286 sq. ft
Counted as living area: Yes

Heated: Yes
Finished: Yes
Enclosed: Yes
Contiguous: Yes
Permitted: Yes
Wet space: No
Addition: No
Conversion: No

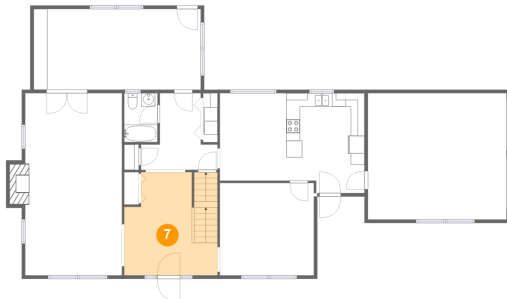
6 Floor 2 - Kitchen



Dimensions: 11'5" x 14'7"
Area: 158 sq. ft
Counted as living area: Yes

Heated: Yes
Finished: Yes
Enclosed: Yes
Contiguous: Yes
Permitted: Yes
Wet space: No
Addition: No
Conversion: No

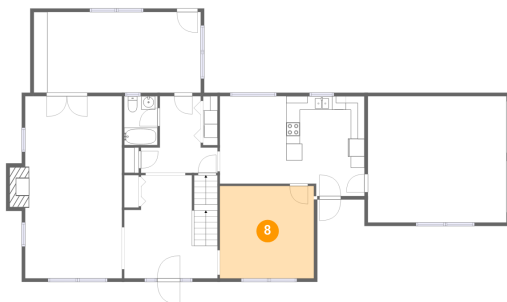
7 Floor 2 - Foyer



Dimensions: 13'7" x 15'0"
Area: 190 sq. ft
Counted as living area: Yes

Heated: Yes
Finished: Yes
Enclosed: Yes
Contiguous: Yes
Permitted: Yes
Wet space: No
Addition: No
Conversion: No

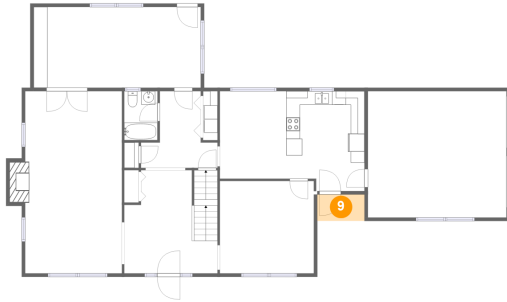
8 Floor 2 - Dining Room



Dimensions: 13'9" x 13'5"
Area: 184 sq. ft
Counted as living area: Yes

Heated: Yes
Finished: Yes
Enclosed: Yes
Contiguous: Yes
Permitted: Yes
Wet space: No
Addition: No
Conversion: No

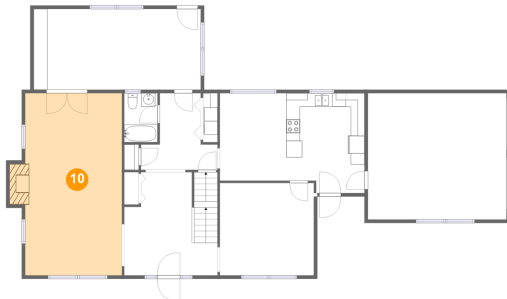
9 Floor 2 - Patio



Dimensions: 6'11" x 3'10"
Area: 26 sq. ft
Counted as living area: No

Heated: No
Finished: Yes
Enclosed: No
Contiguous: Yes
Permitted: Yes
Wet space: No
Addition: No
Conversion: No

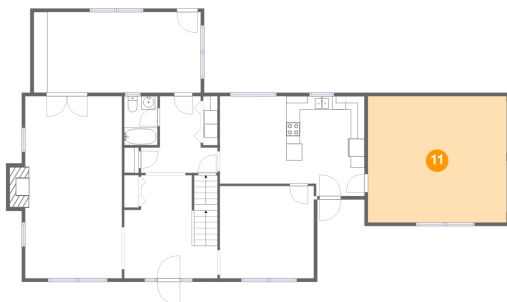
10 Floor 2 - Living Room



Dimensions: 14'1" x 26'6"
Area: 388 sq. ft
Counted as living area: Yes

Heated: Yes
Finished: Yes
Enclosed: Yes
Contiguous: Yes
Permitted: Yes
Wet space: No
Addition: No
Conversion: No

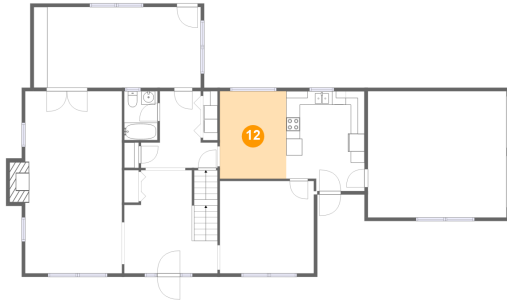
11 Floor 2 - Garage



Dimensions: 20'2" x 18'5"
Area: 372 sq. ft
Counted as living area: No

Heated: No
Finished: No
Enclosed: Yes
Contiguous: Yes
Permitted: Yes
Wet space: No
Addition: No
Conversion: No

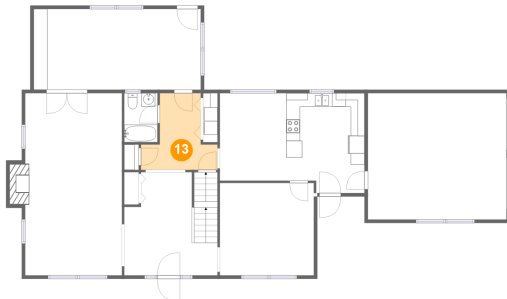
12 Floor 2 - Breakfast Nook



Dimensions: 9'8" x 12'9"
Area: 123 sq. ft
Counted as living area: Yes

Heated: Yes
Finished: Yes
Enclosed: Yes
Contiguous: Yes
Permitted: Yes
Wet space: No
Addition: No
Conversion: No

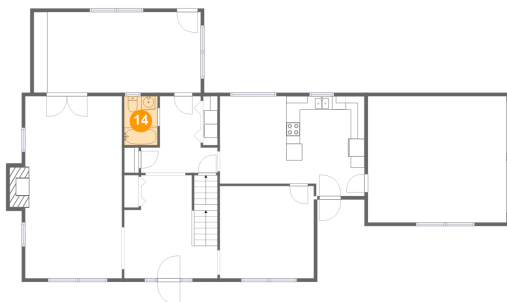
13 Floor 2 - Hall



Dimensions: 11'2" x 11'2"
Area: 86 sq. ft
Counted as living area: Yes

Heated: Yes
Finished: Yes
Enclosed: Yes
Contiguous: Yes
Permitted: Yes
Wet space: No
Addition: No
Conversion: No

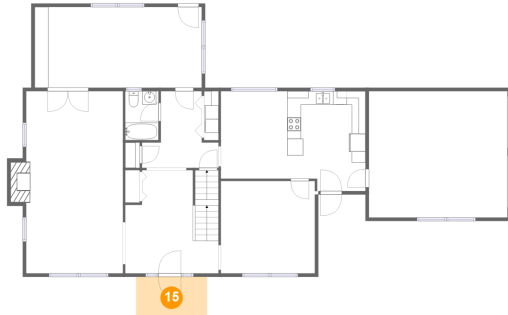
14 Floor 2 - Bath



Dimensions: 4'10" x 7'2"
Area: 35 sq. ft
Counted as living area: Yes

Heated: Yes
Finished: Yes
Enclosed: Yes
Contiguous: Yes
Permitted: Yes
Wet space: Yes
Addition: No
Conversion: No

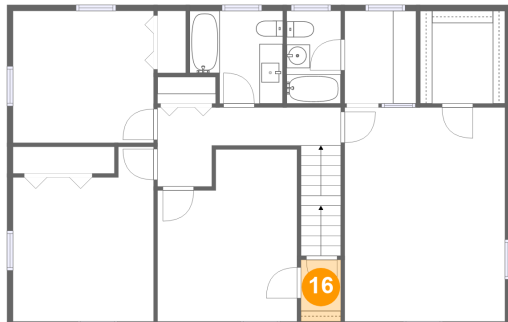
15 Floor 2 - Porch



Dimensions: 10'4" x 5'8"
Area: 59 sq. ft
Counted as living area: No

Heated: No
Finished: Yes
Enclosed: No
Contiguous: Yes
Permitted: Yes
Wet space: No
Addition: No
Conversion: No

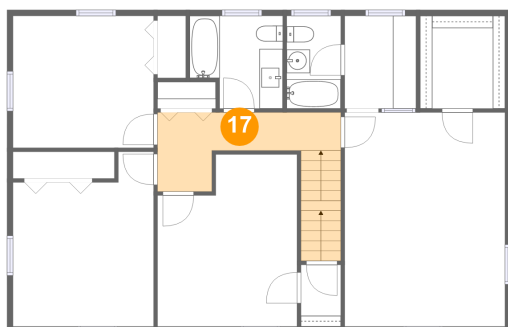
16 Floor 3 - W.I.C.



Dimensions: 3'5" x 5'3"
Area: 18 sq. ft
Counted as living area: Yes

Heated: Yes
Finished: Yes
Enclosed: Yes
Contiguous: Yes
Permitted: Yes
Wet space: No
Addition: No
Conversion: No

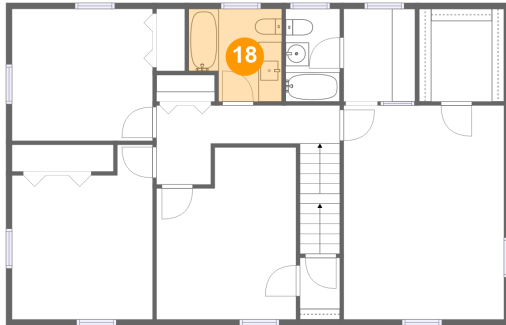
17 Floor 3 - Hall



Dimensions: 15'8" x 6'9"
Area: 99 sq. ft
Counted as living area: Yes

Heated: Yes
Finished: Yes
Enclosed: Yes
Contiguous: Yes
Permitted: Yes
Wet space: No
Addition: No
Conversion: No

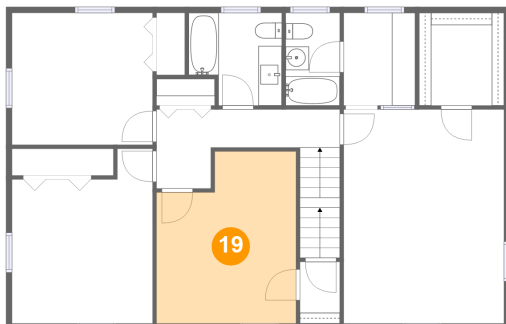
18 Floor 3 - Bath



Dimensions: 8'0" x 7'11"
Area: 56 sq. ft
Counted as living area: Yes

Heated: Yes
Finished: Yes
Enclosed: Yes
Contiguous: Yes
Permitted: Yes
Wet space: Yes
Addition: No
Conversion: No

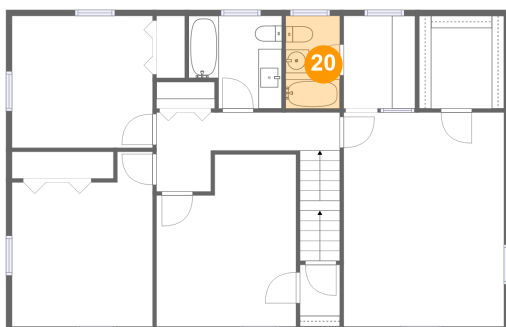
19 Floor 3 - Bedroom



Dimensions: 11'11" x 14'8"
Area: 158 sq. ft
Counted as living area: Yes

Heated: Yes
Finished: Yes
Enclosed: Yes
Contiguous: Yes
Permitted: Yes
Wet space: No
Addition: No
Conversion: No

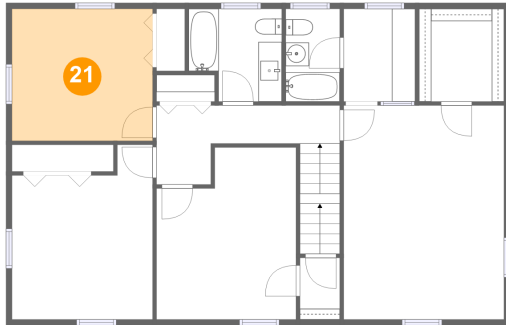
20 Floor 3 - Bath



Dimensions: 4'8" x 7'11"
Area: 37 sq. ft
Counted as living area: Yes

Heated: Yes
Finished: Yes
Enclosed: Yes
Contiguous: Yes
Permitted: Yes
Wet space: Yes
Addition: No
Conversion: No

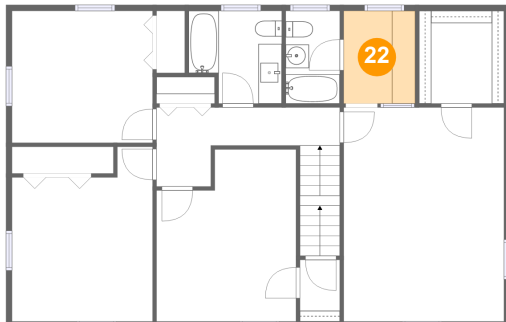
21 Floor 3 - Bedroom



Dimensions: 12'0" x 11'3"
Area: 136 sq. ft
Counted as living area: Yes

Heated: Yes
Finished: Yes
Enclosed: Yes
Contiguous: Yes
Permitted: Yes
Wet space: No
Addition: No
Conversion: No

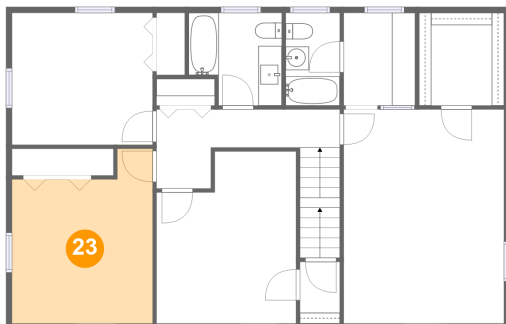
22 Floor 3 - Room



Dimensions: 6'1" x 7'11"
Area: 48 sq. ft
Counted as living area: Yes

Heated: Yes
Finished: Yes
Enclosed: Yes
Contiguous: Yes
Permitted: Yes
Wet space: No
Addition: No
Conversion: No

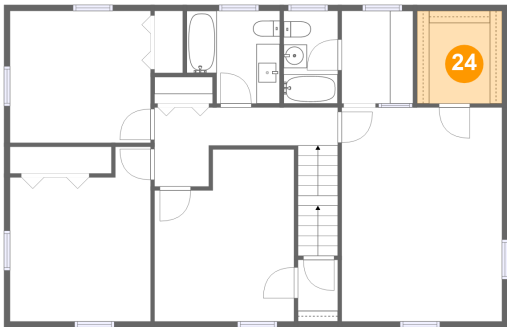
23 Floor 3 - Bedroom



Dimensions: 12'0" x 14'11"
Area: 156 sq. ft
Counted as living area: Yes

Heated: Yes
Finished: Yes
Enclosed: Yes
Contiguous: Yes
Permitted: Yes
Wet space: No
Addition: No
Conversion: No

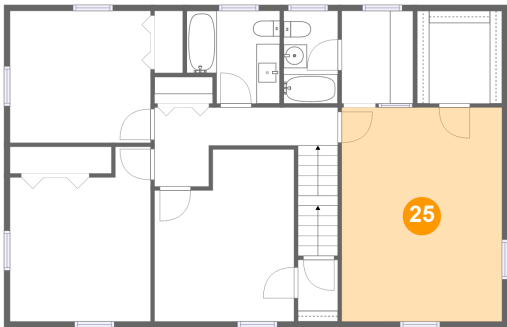
24 Floor 3 - W.I.C.



Dimensions: 7'3" x 7'11"
Area: 58 sq. ft
Counted as living area: Yes

Heated: Yes
Finished: Yes
Enclosed: Yes
Contiguous: Yes
Permitted: Yes
Wet space: No
Addition: No
Conversion: No

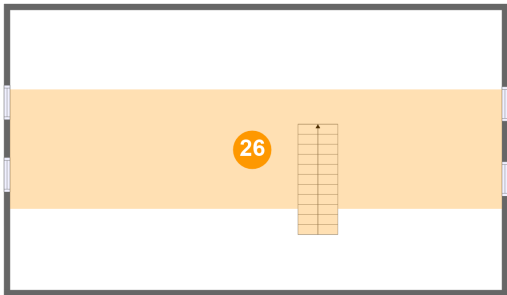
25 Floor 3 - Primary Bedroom



Dimensions: 13'9" x 18'3"
Area: 251 sq. ft
Counted as living area: Yes

Heated: Yes
Finished: Yes
Enclosed: Yes
Contiguous: Yes
Permitted: Yes
Wet space: No
Addition: No
Conversion: No

26 Floor 4 - Attic



Dimensions: 42'1" x 23'11"
Area: 437 sq. ft
Counted as living area: No

Heated: No
Finished: No
Enclosed: Yes
Contiguous: Yes
Permitted: Yes
Wet space: No
Addition: No
Conversion: No