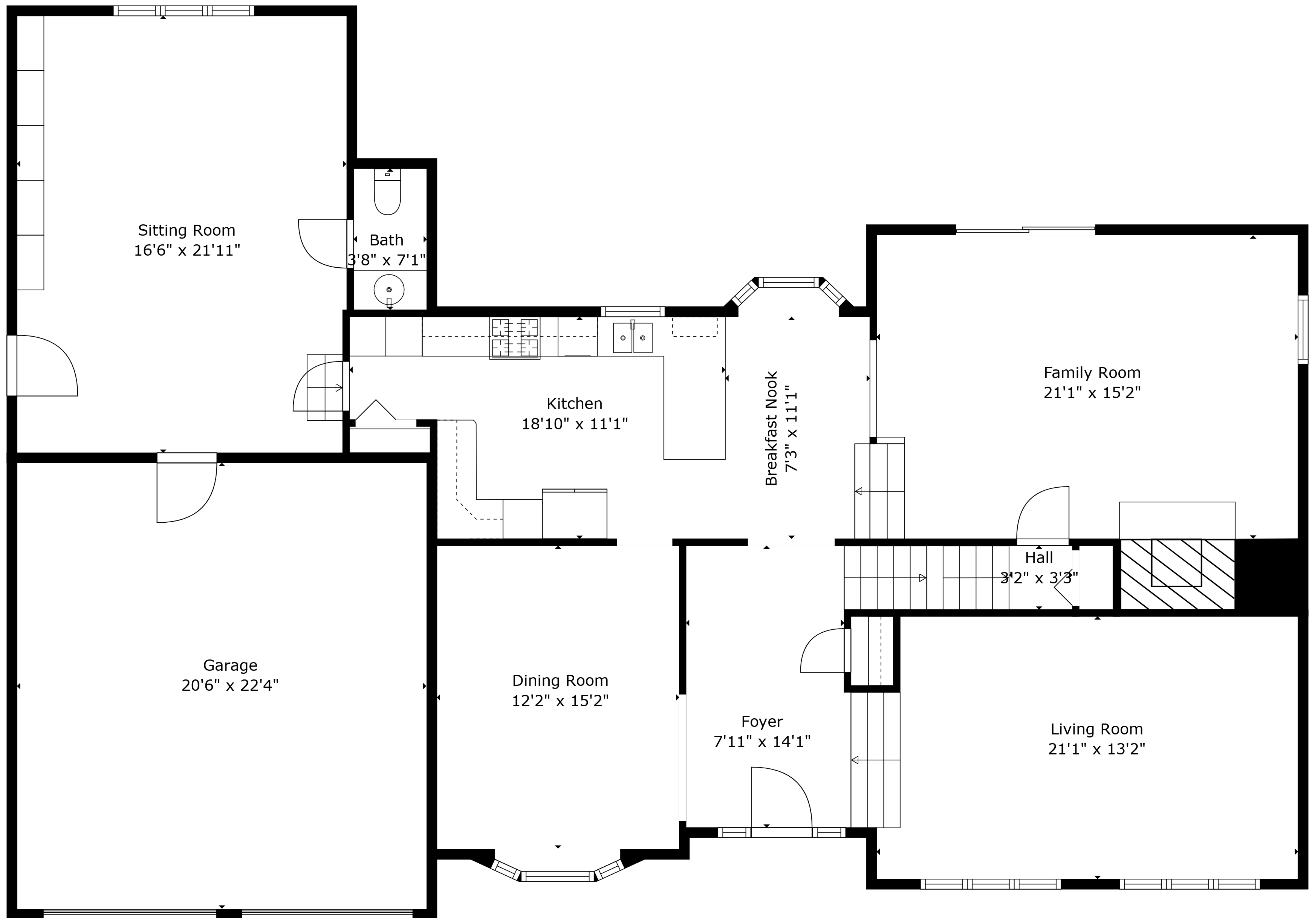


Basement
22'9" x 26'8"



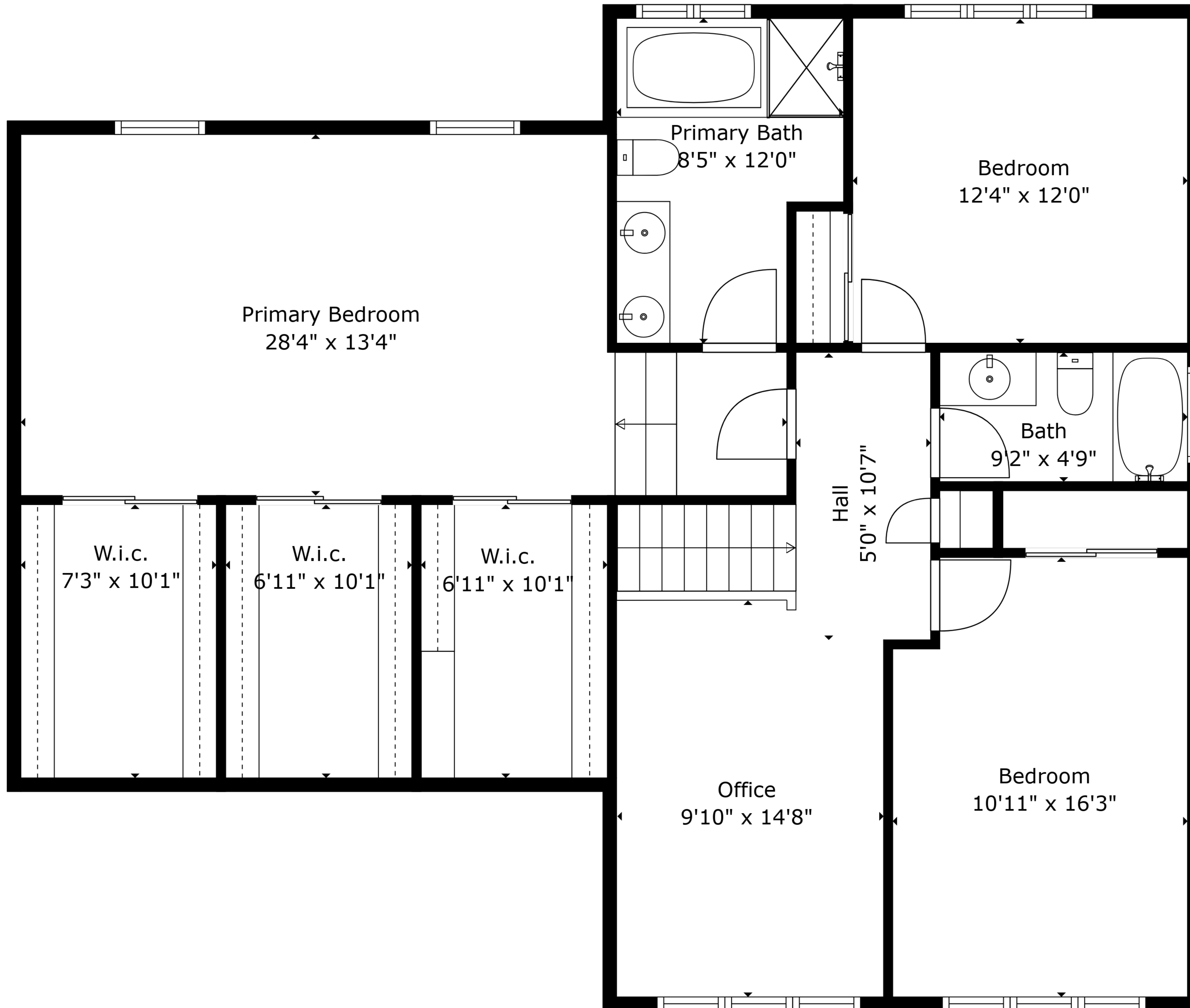


TOTAL: 2863 sq. ft

BELOW GROUND: 20 sq. ft, FLOOR 2: 1679 sq. ft, FLOOR 3: 1164 sq. ft
 EXCLUDED AREAS: BASEMENT: 572 sq. ft, GARAGE: 458 sq. ft, BAY WINDOW: 14 sq. ft,
 LOW CEILING: 123 sq. ft

Sizes And Dimensions Are Approximate And For Reference Only. Actual May Vary.



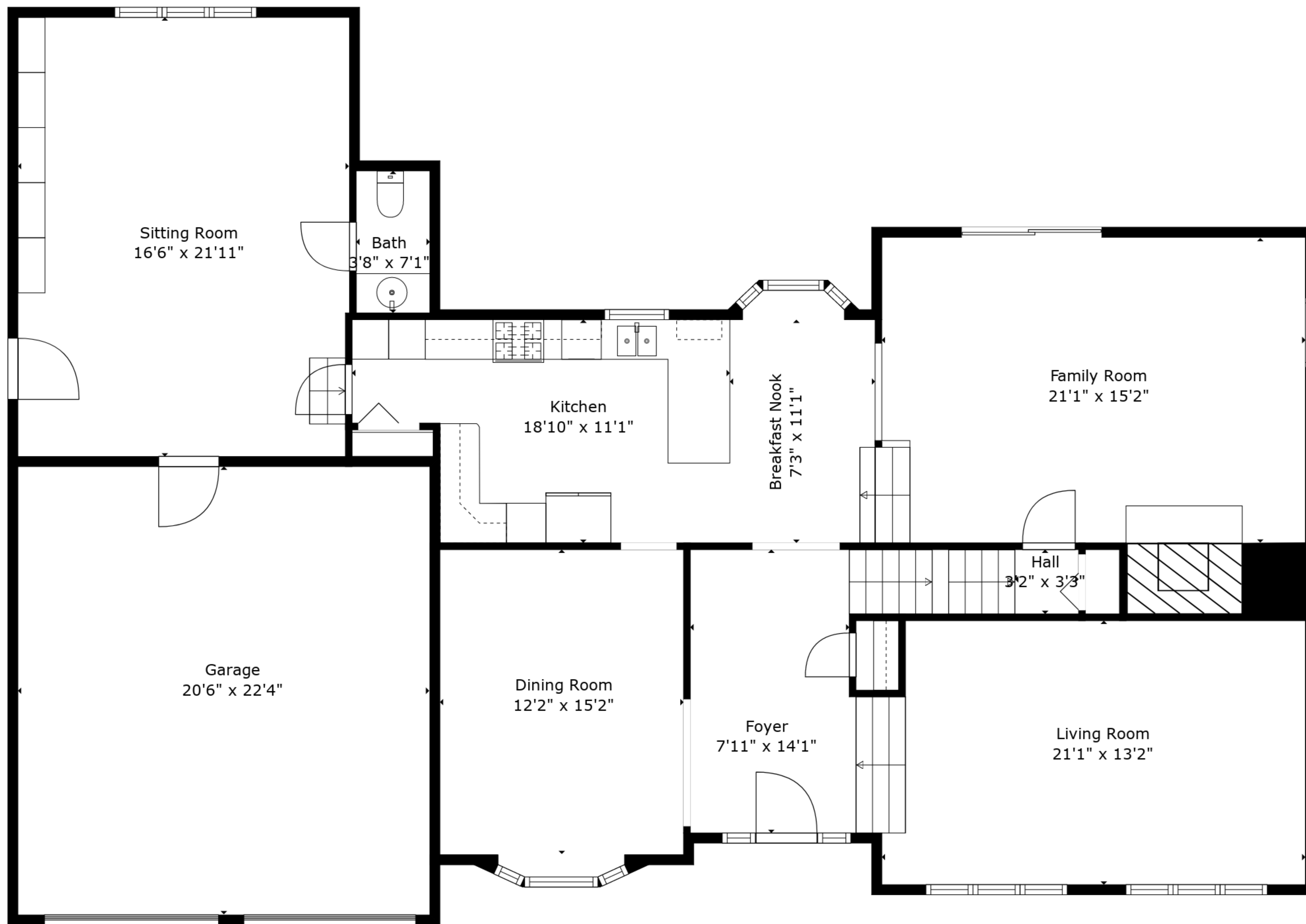


TOTAL: 2863 sq. ft

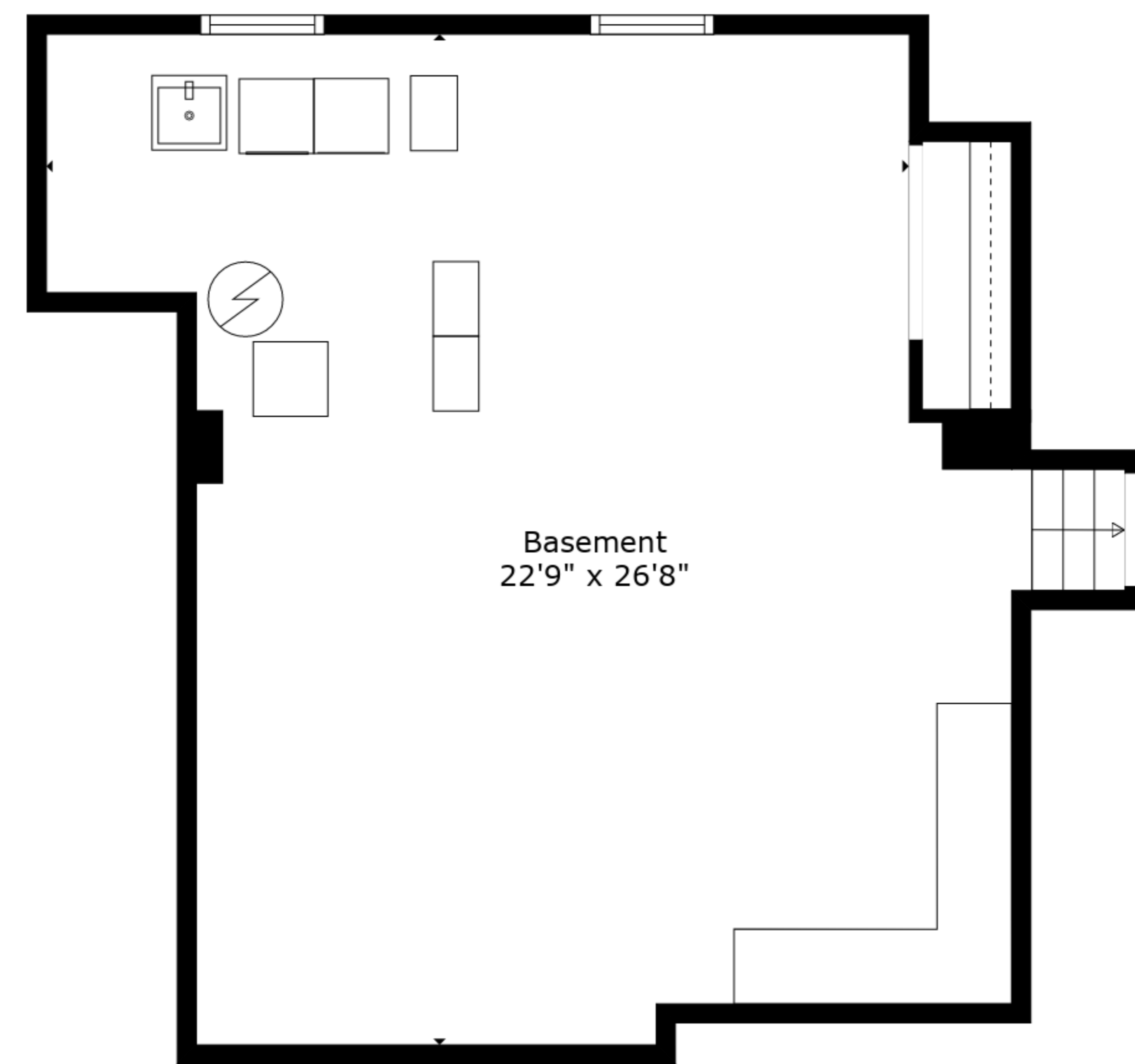
BELOW GROUND: 20 sq. ft, FLOOR 2: 1679 sq. ft, FLOOR 3: 1164 sq. ft
 EXCLUDED AREAS: BASEMENT: 572 sq. ft, GARAGE: 458 sq. ft, BAY WINDOW: 14 sq. ft,
 LOW CEILING: 123 sq. ft

Sizes And Dimensions Are Approximate And For Reference Only. Actual May Vary.

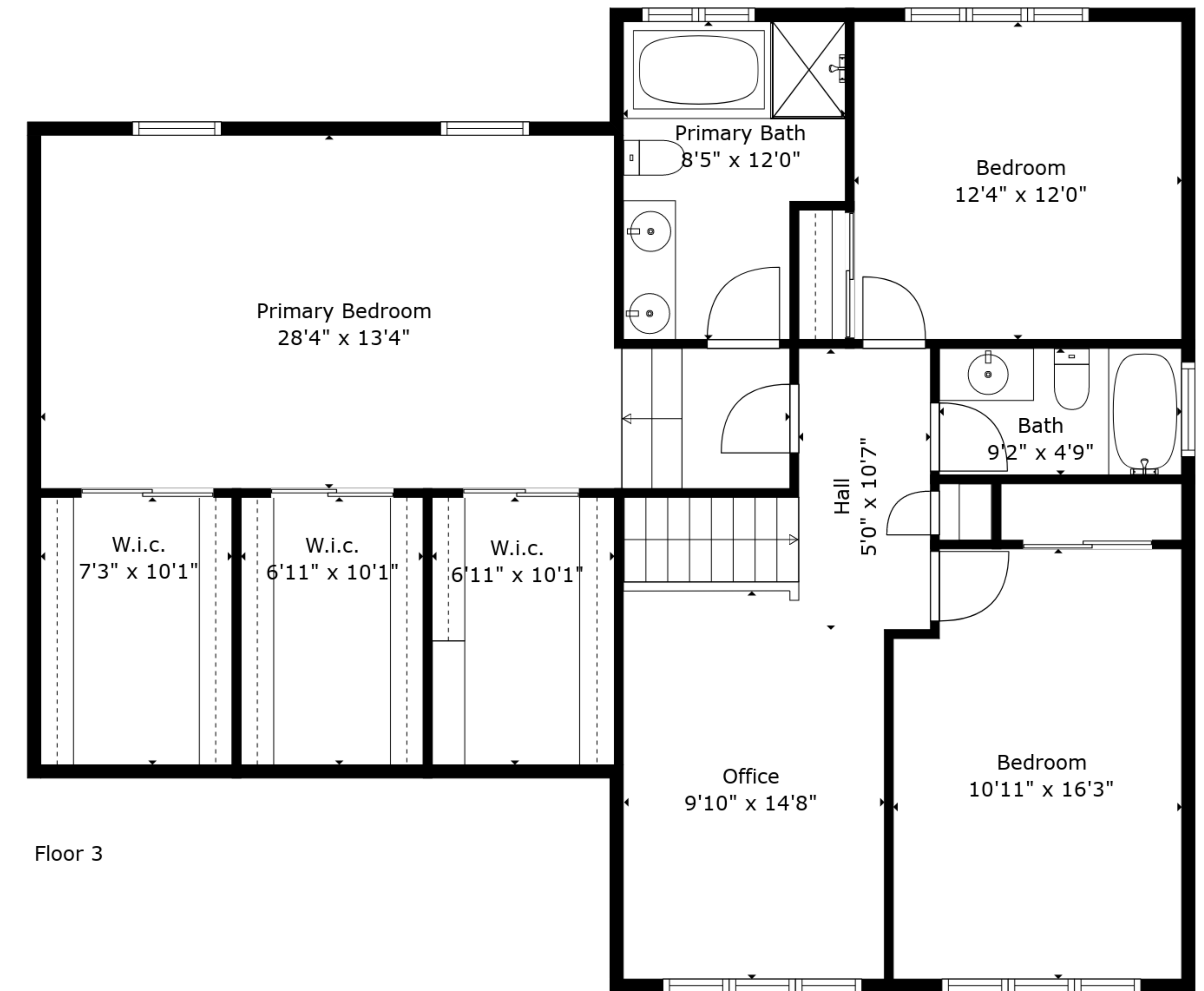




Floor 2



Floor 1



Floor 3

TOTAL: 2863 sq. ft
 BELOW GROUND: 20 sq. ft, FLOOR 2: 1679 sq. ft, FLOOR 3: 1164 sq. ft
 EXCLUDED AREAS: BASEMENT: 572 sq. ft, GARAGE: 458 sq. ft, BAY WINDOW: 14 sq. ft,
 LOW CEILING: 123 sq. ft

Sizes And Dimensions Are Approximate And For Reference Only. Actual May Vary.

