


887 Cosburn Ave., East York, ON, CA



Property summary


 **0** Garages

 **4** Bedrooms

 **2** Bathrooms

 **0** Half baths

 **2** Floors

 **1,544** Gross living area sqft

 **1,621** Total sqft

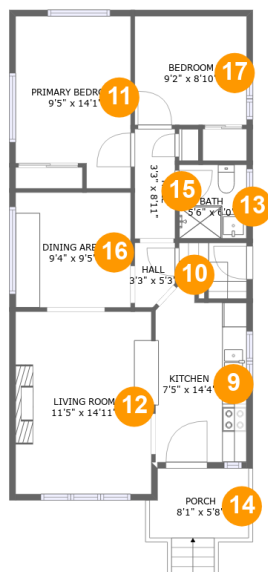
887 Cosburn Ave., East York, ON, CA**Room dimensions**

Floor 1

Total sqft: 803 Living area: 770

#		Dimensions	sqft	Counted as living area
1	Bath	3'9" x 6'7"	24 sq. ft	Yes
2	Hall	10'0" x 9'10"	76 sq. ft	Yes
3	Bedroom	18'10" x 10'9"	189 sq. ft	Yes
4	Kitchen	13'1" x 15'3"	165 sq. ft	Yes
5	Bedroom	11'5" x 11'3"	93 sq. ft	Yes
6	Utility	7'3" x 5'9"	44 sq. ft	Yes
7	Room	6'7" x 5'6"	33 sq. ft	No
8	Hall	8'5" x 9'5"	54 sq. ft	Yes

887 Cosburn Ave., East York, ON, CA



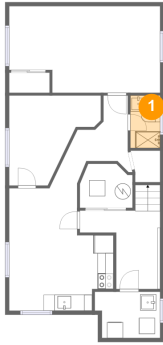
Room dimensions

Floor 2

Total sqft: 818 Living area: 774

#		Dimensions	sqft	Counted as living area
9	Kitchen	7'5" x 14'4"	99 sq. ft	Yes
10	Hall	3'3" x 5'3"	16 sq. ft	Yes
11	Bedroom	9'5" x 14'1"	120 sq. ft	Yes
12	Living Room	11'5" x 14'11"	167 sq. ft	Yes
13	Bath	5'6" x 6'0"	33 sq. ft	Yes
14	Outdoor	8'1" x 5'8"	44 sq. ft	No
15	Hall	3'3" x 8'11"	29 sq. ft	Yes
16	Dining Room	9'4" x 9'5"	88 sq. ft	Yes
17	Bedroom	9'2" x 8'10"	81 sq. ft	Yes

1 Floor 1 - Bath



Dimensions: 3'9" x 6'7"
Area: 24 sq. ft
Counted as living area: Yes

Heated: Yes
Finished: Yes
Enclosed: Yes
Contiguous: Yes
Permitted: Yes
Wet space: Yes
Addition: No
Conversion: No

2 Floor 1 - Hall

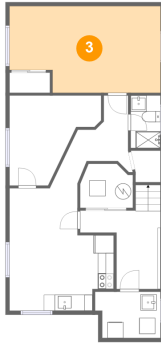


Dimensions: 10'0" x 9'10"
Area: 76 sq. ft
Counted as living area: Yes

Heated: Yes
Finished: Yes
Enclosed: Yes
Contiguous: Yes
Permitted: Yes
Wet space: No
Addition: No
Conversion: No

887 Cosburn Ave., East York, ON, CA

3 Floor 1 - Bedroom



Dimensions: 18'10" x 10'9"
Area: 189 sq. ft
Counted as living area: Yes

Heated: Yes
Finished: Yes
Enclosed: Yes
Contiguous: Yes
Permitted: Yes
Wet space: No
Addition: No
Conversion: No

4 Floor 1 - Kitchen



Dimensions: 13'1" x 15'3"
Area: 165 sq. ft
Counted as living area: Yes

Heated: Yes
Finished: Yes
Enclosed: Yes
Contiguous: Yes
Permitted: Yes
Wet space: No
Addition: No
Conversion: No

5 Floor 1 - Bedroom

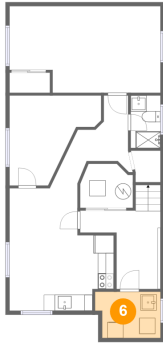


Dimensions: 11'5" x 11'3"
Area: 93 sq. ft
Counted as living area: Yes

Heated: Yes
Finished: Yes
Enclosed: Yes
Contiguous: Yes
Permitted: Yes
Wet space: No
Addition: No
Conversion: No

887 Cosburn Ave., East York, ON, CA

6 Floor 1 - Utility



Dimensions: 7'3" x 5'9"
Area: 44 sq. ft
Counted as living area: Yes

Heated: Yes
Finished: Yes
Enclosed: Yes
Contiguous: Yes
Permitted: Yes
Wet space: No
Addition: No
Conversion: No

7 Floor 1 - Room



Dimensions: 6'7" x 5'6"
Area: 33 sq. ft
Counted as living area: No

Heated: No
Finished: No
Enclosed: Yes
Contiguous: Yes
Permitted: Yes
Wet space: No
Addition: No
Conversion: No

8 Floor 1 - Hall



Dimensions: 8'5" x 9'5"
Area: 54 sq. ft
Counted as living area: Yes

Heated: Yes
Finished: Yes
Enclosed: Yes
Contiguous: Yes
Permitted: Yes
Wet space: No
Addition: No
Conversion: No

887 Cosburn Ave., East York, ON, CA

9 Floor 2 - Kitchen



Dimensions: 7'5" x 14'4"
Area: 99 sq. ft
Counted as living area: Yes

Heated: Yes
Finished: Yes
Enclosed: Yes
Contiguous: Yes
Permitted: Yes
Wet space: No
Addition: No
Conversion: No

10 Floor 2 - Hall



Dimensions: 3'3" x 5'3"
Area: 16 sq. ft
Counted as living area: Yes

Heated: Yes
Finished: Yes
Enclosed: Yes
Contiguous: Yes
Permitted: Yes
Wet space: No
Addition: No
Conversion: No

11 Floor 2 - Bedroom



Dimensions: 9'5" x 14'1"
Area: 120 sq. ft
Counted as living area: Yes

Heated: Yes
Finished: Yes
Enclosed: Yes
Contiguous: Yes
Permitted: Yes
Wet space: No
Addition: No
Conversion: No

887 Cosburn Ave., East York, ON, CA**12 Floor 2 - Living Room**

Dimensions: 11'5" x 14'11"
Area: 167 sq. ft
Counted as living area: Yes

Heated: Yes
Finished: Yes
Enclosed: Yes
Contiguous: Yes
Permitted: Yes
Wet space: No
Addition: No
Conversion: No

13 Floor 2 - Bath

Dimensions: 5'6" x 6'0"
Area: 33 sq. ft
Counted as living area: Yes

Heated: Yes
Finished: Yes
Enclosed: Yes
Contiguous: Yes
Permitted: Yes
Wet space: Yes
Addition: No
Conversion: No

14 Floor 2 - Outdoor

Dimensions: 8'1" x 5'8"
Area: 44 sq. ft
Counted as living area: No

Heated: No
Finished: Yes
Enclosed: No
Contiguous: Yes
Permitted: Yes
Wet space: No
Addition: No
Conversion: No

15 Floor 2 - Hall



Dimensions: 3'3" x 8'11"
Area: 29 sq. ft
Counted as living area: Yes

Heated: Yes
Finished: Yes
Enclosed: Yes
Contiguous: Yes
Permitted: Yes
Wet space: No
Addition: No
Conversion: No

16 Floor 2 - Dining Room



Dimensions: 9'4" x 9'5"
Area: 88 sq. ft
Counted as living area: Yes

Heated: Yes
Finished: Yes
Enclosed: Yes
Contiguous: Yes
Permitted: Yes
Wet space: No
Addition: No
Conversion: No

17 Floor 2 - Bedroom



Dimensions: 9'2" x 8'10"
Area: 81 sq. ft
Counted as living area: Yes

Heated: Yes
Finished: Yes
Enclosed: Yes
Contiguous: Yes
Permitted: Yes
Wet space: No
Addition: No
Conversion: No