



Home report


183 Stewart St,Peterborough,ON,CA




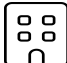
Property summary


**0** Garages


**3** Bedrooms

**1** Bathrooms

**1** Half baths

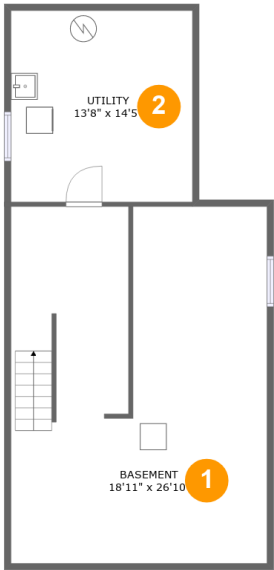
**3** Floors

**1,544** Gross living area sqft

**2,704** Total sqft

Home report

183 Stewart St,Peterborough,ON,CA



Room dimensions

Floor 1 Total sqft: 782 Living area: 0

#		Dimensions	sqft	Counted as living area
1	Basement	18'11" x 26'10"	512 sq. ft	No
2	Utility	13'8" x 14'5"	197 sq. ft	No

Home report

183 Stewart St,Peterborough,ON,CA



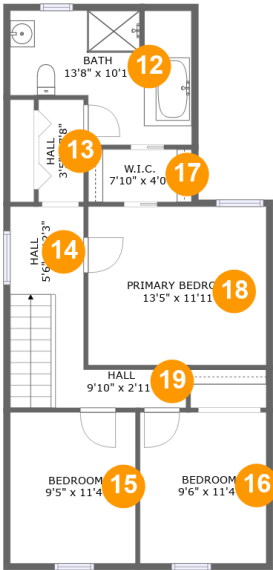
Room dimensions

Floor 2 Total sqft: 1141 Living area: 781

#		Dimensions	sqft	Counted as living area
3	WC	3'4" x 8'4"	28 sq. ft	Yes
4	Foyer	6'11" x 13'4"	97 sq. ft	Yes
5	Room	9'2" x 12'5"	113 sq. ft	No
6	Kitchen	13'10" x 14'5"	186 sq. ft	Yes
7	Living Room	15'10" x 13'4"	209 sq. ft	Yes
8	Screened Porch	9'1" x 8'5"	77 sq. ft	No
9	Dining Room	12'0" x 13'4"	161 sq. ft	Yes
10	Hall	3'4" x 3'6"	12 sq. ft	Yes
11	Hall	12'7" x 20'5"	121 sq. ft	No

Home report

183 Stewart St,Peterborough,ON,CA

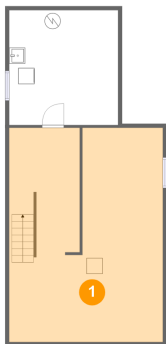


Room dimensions

Floor 3 Total sqft: 781 Living area: 763

#		Dimensions	sqft	Counted as living area
12	Bath	13'8" x 10'1"	115 sq. ft	Yes
13	Hall	3'5" x 7'8"	26 sq. ft	Yes
14	Hall	5'6" x 12'3"	78 sq. ft	Yes
15	Bedroom	9'5" x 11'4"	107 sq. ft	Yes
16	Bedroom	9'6" x 11'4"	108 sq. ft	Yes
17	W.I.C.	7'10" x 4'0"	31 sq. ft	Yes
18	Primary Bedroom	13'5" x 11'11"	160 sq. ft	Yes
19	Hall	9'10" x 2'11"	28 sq. ft	Yes

1 Floor 1 - Basement



Dimensions: 18'11" x 26'10"
Area: 512 sq. ft
Counted as living area: No

Heated: Yes
Finished: No
Enclosed: Yes
Contiguous: Yes
Permitted: Yes
Wet space: No
Addition: No
Conversion: No

2 Floor 1 - Utility



Dimensions: 13'8" x 14'5"
Area: 197 sq. ft
Counted as living area: No

Heated: Yes
Finished: No
Enclosed: Yes
Contiguous: Yes
Permitted: Yes
Wet space: No
Addition: No
Conversion: No

3 Floor 2 - WC



Dimensions: 3'4" x 8'4"
Area: 28 sq. ft
Counted as living area: Yes

Heated: Yes
Finished: Yes
Enclosed: Yes
Contiguous: Yes
Permitted: Yes
Wet space: No
Addition: No
Conversion: No

4 Floor 2 - Foyer



Dimensions: 6'11" x 13'4"
Area: 97 sq. ft
Counted as living area: Yes

Heated: Yes
Finished: Yes
Enclosed: Yes
Contiguous: Yes
Permitted: Yes
Wet space: No
Addition: No
Conversion: No

5 Floor 2 - Room



Dimensions: 9'2" x 12'5"
Area: 113 sq. ft
Counted as living area: No

Heated: Yes
Finished: No
Enclosed: Yes
Contiguous: Yes
Permitted: Yes
Wet space: No
Addition: No
Conversion: No

6 Floor 2 - Kitchen



Dimensions: 13'10" x 14'5"
Area: 186 sq. ft
Counted as living area: Yes

Heated: Yes
Finished: Yes
Enclosed: Yes
Contiguous: Yes
Permitted: Yes
Wet space: No
Addition: No
Conversion: No

7 Floor 2 - Living Room



Dimensions: 15'10" x 13'4"
Area: 209 sq. ft
Counted as living area: Yes

Heated: Yes
Finished: Yes
Enclosed: Yes
Contiguous: Yes
Permitted: Yes
Wet space: No
Addition: No
Conversion: No

8 Floor 2 - Screened Porch



Dimensions: 9'1" x 8'5"
Area: 77 sq. ft
Counted as living area: No

Heated: No
Finished: Yes
Enclosed: No
Contiguous: Yes
Permitted: Yes
Wet space: No
Addition: No
Conversion: No

9 Floor 2 - Dining Room



Dimensions: 12'0" x 13'4"
Area: 161 sq. ft
Counted as living area: Yes

Heated: Yes
Finished: Yes
Enclosed: Yes
Contiguous: Yes
Permitted: Yes
Wet space: No
Addition: No
Conversion: No

10 Floor 2 - Hall



Dimensions: 3'4" x 3'6"
Area: 12 sq. ft
Counted as living area: Yes

Heated: Yes
Finished: Yes
Enclosed: Yes
Contiguous: Yes
Permitted: Yes
Wet space: No
Addition: No
Conversion: No

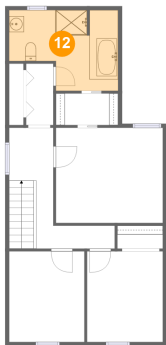
11 Floor 2 - Hall



Dimensions: 12'7" x 20'5"
Area: 121 sq. ft
Counted as living area: No

Heated: Yes
Finished: No
Enclosed: Yes
Contiguous: Yes
Permitted: Yes
Wet space: No
Addition: No
Conversion: No

12 Floor 3 - Bath



Dimensions: 13'8" x 10'1"
Area: 115 sq. ft
Counted as living area: Yes

Heated: Yes
Finished: Yes
Enclosed: Yes
Contiguous: Yes
Permitted: Yes
Wet space: Yes
Addition: No
Conversion: No

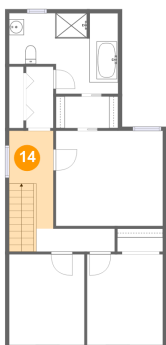
13 Floor 3 - Hall



Dimensions: 3'5" x 7'8"
Area: 26 sq. ft
Counted as living area: Yes

Heated: Yes
Finished: Yes
Enclosed: Yes
Contiguous: Yes
Permitted: Yes
Wet space: No
Addition: No
Conversion: No

14 Floor 3 - Hall



Dimensions: 5'6" x 12'3"
Area: 78 sq. ft
Counted as living area: Yes

Heated: Yes
Finished: Yes
Enclosed: Yes
Contiguous: Yes
Permitted: Yes
Wet space: No
Addition: No
Conversion: No

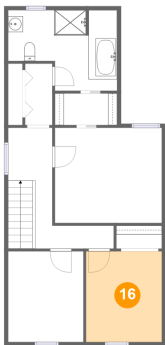
15 Floor 3 - Bedroom



Dimensions: 9'5" x 11'4"
Area: 107 sq. ft
Counted as living area: Yes

Heated: Yes
Finished: Yes
Enclosed: Yes
Contiguous: Yes
Permitted: Yes
Wet space: No
Addition: No
Conversion: No

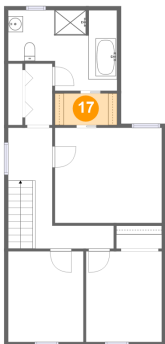
16 Floor 3 - Bedroom



Dimensions: 9'6" x 11'4"
Area: 108 sq. ft
Counted as living area: Yes

Heated: Yes
Finished: Yes
Enclosed: Yes
Contiguous: Yes
Permitted: Yes
Wet space: No
Addition: No
Conversion: No

17 Floor 3 - W.I.C.



Dimensions: 7'10" x 4'0"
Area: 31 sq. ft
Counted as living area: Yes

Heated: Yes
Finished: Yes
Enclosed: Yes
Contiguous: Yes
Permitted: Yes
Wet space: No
Addition: No
Conversion: No

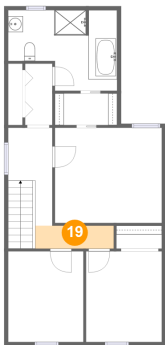
18 Floor 3 - Primary Bedroom



Dimensions: 13'5" x 11'11"
Area: 160 sq. ft
Counted as living area: Yes

Heated: Yes
Finished: Yes
Enclosed: Yes
Contiguous: Yes
Permitted: Yes
Wet space: No
Addition: No
Conversion: No

19 Floor 3 - Hall



Dimensions: 9'10" x 2'11"
Area: 28 sq. ft
Counted as living area: Yes

Heated: Yes
Finished: Yes
Enclosed: Yes
Contiguous: Yes
Permitted: Yes
Wet space: No
Addition: No
Conversion: No