





503 Cleveland Avenue, Locust Grove Park, Salem, Salem, Virginia, United States, 24153

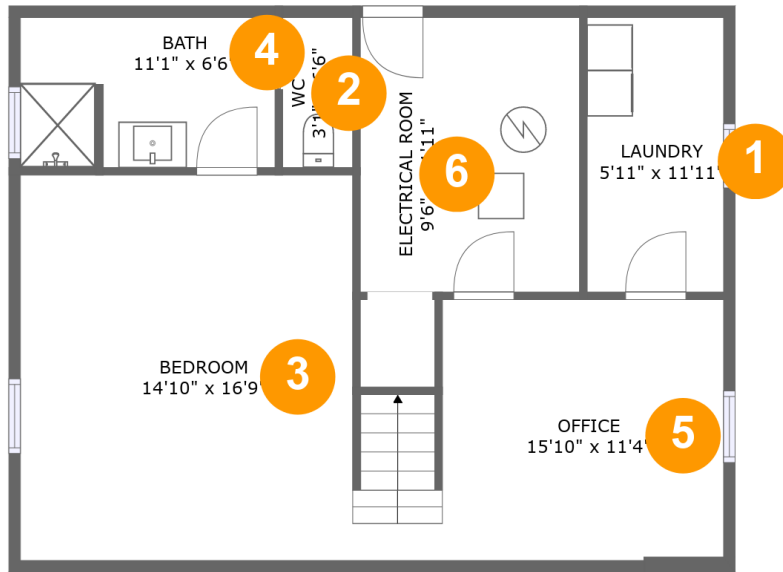


Property Summary

 **1** garages  **4** bedrooms  **2** bathrooms  **1** half baths

 **4** floors  **1,481** Gross Living Area sqft  **3,349** total sqft

**503 Cleveland Avenue, Locust Grove Park,
Salem, Salem, Virginia, United States, 24153**



Room Dimensions

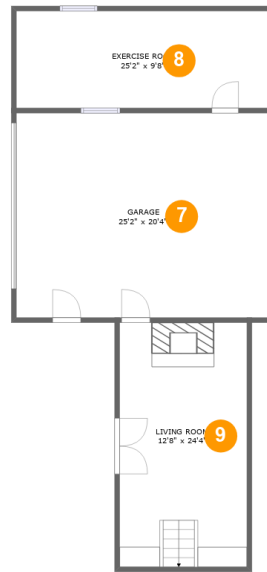
Floor 1

Total sqft: 779

Living area: 298

#	Room name	Dimensions	Area (sqft)	Counted as Living Area
1	Laundry	5'11" x 11'11"	71 sq. ft	Yes
2	Wc	3'1" x 6'6"	20 sq. ft	Yes
3	Bedroom	14'10" x 16'9"	243 sq. ft	No
4	Bath	11'1" x 6'6"	71 sq. ft	No
5	Office	15'10" x 11'4"	163 sq. ft	Yes
6	Electrical Room	9'6" x 11'11"	114 sq. ft	No

503 Cleveland Avenue, Locust Grove Park, Salem, Salem, Virginia, United States, 24153



Room Dimensions

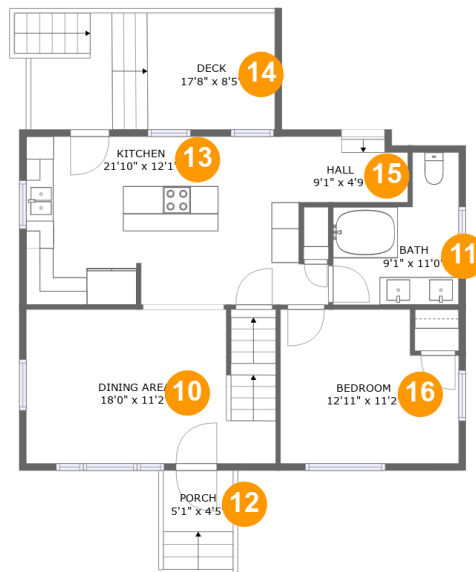
Floor 2

Total sqft: 1164

Living area: 279

#	Room name	Dimensions	Area (sqft)	Counted as Living Area
7	Garage	25'2" x 20'4"	512 sq. ft	No
8	Exercise Room	25'2" x 9'8"	243 sq. ft	Yes
9	Living Room	12'8" x 24'4"	308 sq. ft	No

503 Cleveland Avenue, Locust Grove Park, Salem, Salem, Virginia, United States, 24153



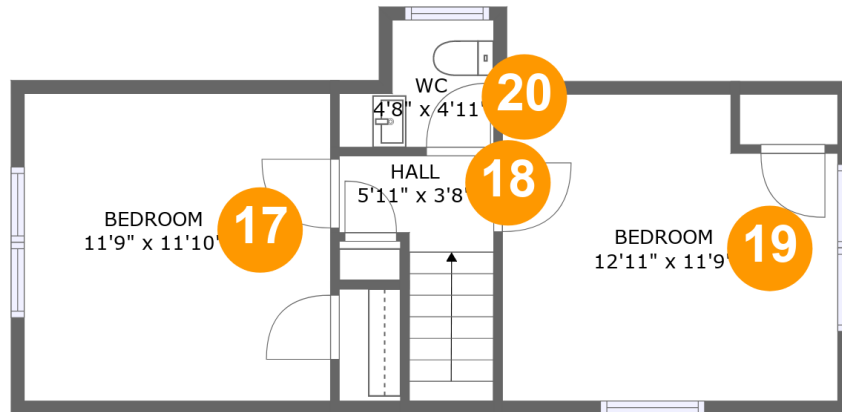
Room Dimensions

Floor 3

Total sqft: 980

Living area: 793

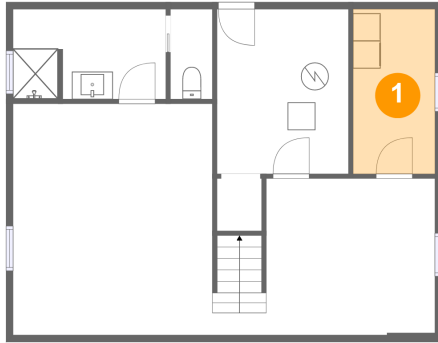
#	Room name	Dimensions	Area (sqft)	Counted as Living Area
10	Dining Area	18'0" x 11'2"	199 sq. ft	Yes
11	Bath	9'1" x 11'0"	77 sq. ft	Yes
12	Porch	5'1" x 4'5"	36 sq. ft	No
13	Kitchen	21'10" x 12'1"	239 sq. ft	Yes
14	Deck	17'8" x 8'5"	151 sq. ft	No
15	Hall	9'1" x 4'9"	41 sq. ft	Yes
16	Bedroom	12'11" x 11'2"	132 sq. ft	Yes

**503 Cleveland Avenue, Locust Grove Park,
Salem, Salem, Virginia, United States, 24153****Room Dimensions****Floor 4****Total sqft: 426****Living area: 111**

#	Room name	Dimensions	Area (sqft)	Counted as Living Area
17	Bedroom	11'9" x 11'10"	139 sq. ft	No
18	Hall	5'11" x 3'8"	39 sq. ft	Yes
19	Bedroom	12'11" x 11'9"	142 sq. ft	No
20	Wc	4'8" x 4'11"	23 sq. ft	Yes

503 Cleveland Avenue, Locust Grove Park, Salem, Salem, Virginia, United States, 24153

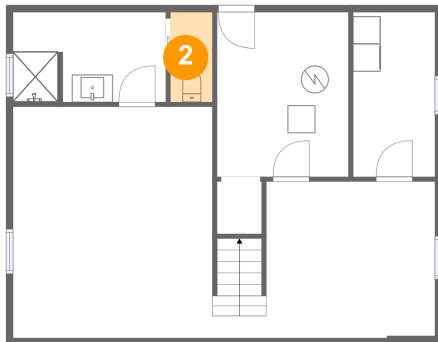
1 Floor 1 - Laundry



Dimensions: 5'11" x 11'11"
Area: 71 sq. ft
Counted as Living Area:
Yes

Heated: Yes
Finished: Yes
Enclosed: Yes
Contiguous:
Yes
Permitted: Yes
Wet Space: No
Addition: No
Conversion: No

2 Floor 1 - Wc

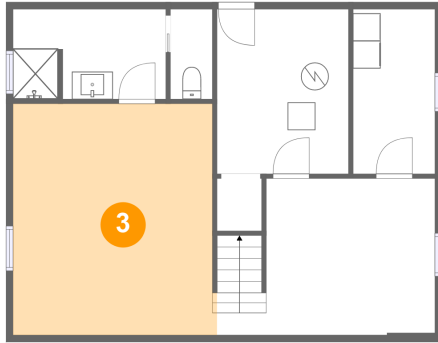


Dimensions: 3'1" x 6'6"
Area: 20 sq. ft
Counted as Living Area:
Yes

Heated: Yes
Finished: Yes
Enclosed: Yes
Contiguous:
Yes
Permitted: Yes
Wet Space: Yes
Addition: No
Conversion: No

503 Cleveland Avenue, Locust Grove Park, Salem, Salem, Virginia, United States, 24153

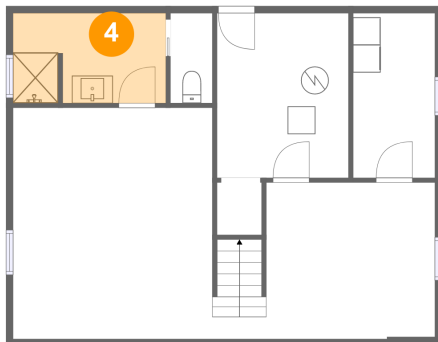
3 Floor 1 - Bedroom



Dimensions: 14'10" x 16'9"
Area: 243 sq. ft
Counted as Living Area: No

Heated: Yes
Finished: Yes
Enclosed: Yes
Contiguous: Yes
Permitted: Yes
Wet Space: No
Addition: No
Conversion: No

4 Floor 1 - Bath



Dimensions: 11'1" x 6'6"
Area: 71 sq. ft
Counted as Living Area: No

Heated: Yes
Finished: Yes
Enclosed: Yes
Contiguous: Yes
Permitted: Yes
Wet Space: Yes
Addition: No
Conversion: No

5 Floor 1 - Office

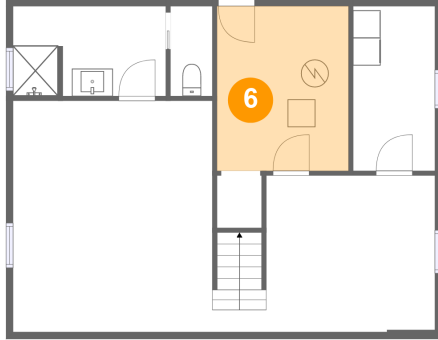


Dimensions: 15'10" x 11'4"
Area: 163 sq. ft
Counted as Living Area:
Yes

Heated: Yes
Finished: Yes
Enclosed: Yes
Contiguous:
Yes
Permitted: Yes
Wet Space: No
Addition: No
Conversion: No

**503 Cleveland Avenue, Locust Grove Park,
Salem, Salem, Virginia, United States, 24153**

6 Floor 1 - Electrical Room



Dimensions: 9'6" x 11'11"
Area: 114 sq. ft
Counted as Living Area: No

Heated: No
Finished: No
Enclosed: Yes
Contiguous: Yes
Permitted: Yes
Wet Space: No
Addition: No
Conversion: No

7 Floor 2 - Garage



Dimensions: 25'2" x 20'4"
Area: 512 sq. ft
Counted as Living Area: No

Heated: No
Finished: No
Enclosed: Yes
Contiguous: Yes
Permitted: Yes
Wet Space: No
Addition: No
Conversion: No

8 Floor 2 - Exercise Room

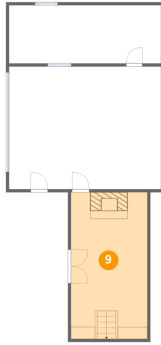


Dimensions: 25'2" x 9'8"
Area: 243 sq. ft
Counted as Living Area: Yes

Heated: Yes
Finished: Yes
Enclosed: Yes
Contiguous: Yes
Permitted: Yes
Wet Space: No
Addition: No
Conversion: No

503 Cleveland Avenue, Locust Grove Park, Salem, Salem, Virginia, United States, 24153

9 Floor 2 - Living Room



Dimensions: 12'8" x 24'4"
Area: 308 sq. ft
Counted as Living Area: No

Heated: Yes
Finished: Yes
Enclosed: Yes
Contiguous: No
Permitted: Yes
Wet Space: No
Addition: No
Conversion: No

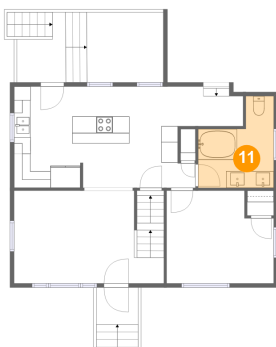
10 Floor 3 - Dining Area



Dimensions: 18'0" x 11'2"
Area: 199 sq. ft
Counted as Living Area:
Yes

Heated: Yes
Finished: Yes
Enclosed: Yes
Contiguous:
Yes
Permitted: Yes
Wet Space: No
Addition: No
Conversion: No

11 Floor 3 - Bath

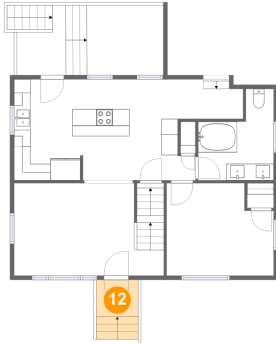


Dimensions: 9'1" x 11'0"
Area: 77 sq. ft
Counted as Living Area:
Yes

Heated: Yes
Finished: Yes
Enclosed: Yes
Contiguous:
Yes
Permitted: Yes
Wet Space: Yes
Addition: No
Conversion: No

503 Cleveland Avenue, Locust Grove Park, Salem, Salem, Virginia, United States, 24153

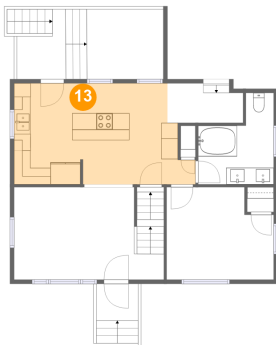
12 Floor 3 - Porch



Dimensions: 5'1" x 4'5"
Area: 36 sq. ft
Counted as Living Area: No

Heated: No
Finished: Yes
Enclosed: No
Contiguous: Yes
Permitted: Yes
Wet Space: No
Addition: No
Conversion: No

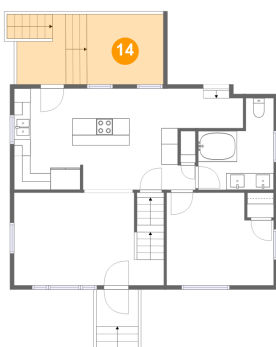
13 Floor 3 - Kitchen



Dimensions: 21'10" x 12'1"
Area: 239 sq. ft
Counted as Living Area:
Yes

Heated: Yes
Finished: Yes
Enclosed: Yes
Contiguous:
Yes
Permitted: Yes
Wet Space: No
Addition: No
Conversion: No

14 Floor 3 - Deck

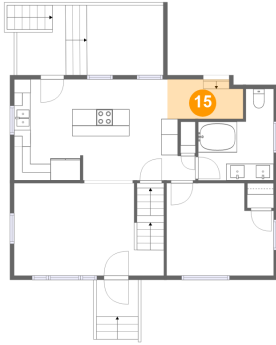


Dimensions: 17'8" x 8'5"
Area: 151 sq. ft
Counted as Living Area: No

Heated: No
Finished: Yes
Enclosed: No
Contiguous: Yes
Permitted: Yes
Wet Space: No
Addition: No
Conversion: No

503 Cleveland Avenue, Locust Grove Park, Salem, Salem, Virginia, United States, 24153

15 Floor 3 - Hall



Dimensions: 9'1" x 4'9"
Area: 41 sq. ft
Counted as Living Area:
Yes

Heated: Yes
Finished: Yes
Enclosed: Yes
Contiguous:
Yes
Permitted: Yes
Wet Space: No
Addition: No
Conversion: No

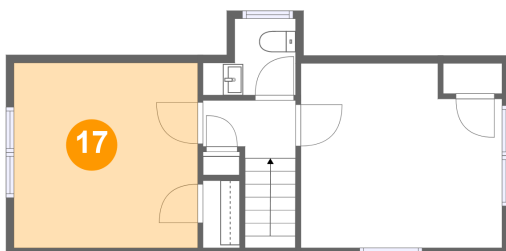
16 Floor 3 - Bedroom



Dimensions: 12'11" x 11'2"
Area: 132 sq. ft
Counted as Living Area:
Yes

Heated: Yes
Finished: Yes
Enclosed: Yes
Contiguous:
Yes
Permitted: Yes
Wet Space: No
Addition: No
Conversion: No

17 Floor 4 - Bedroom

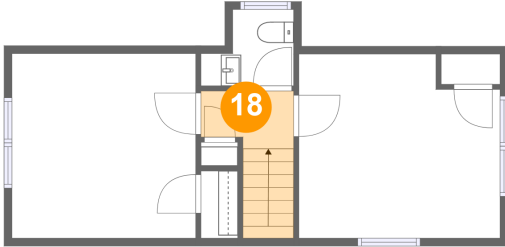


Dimensions: 11'9" x 11'10"
Area: 139 sq. ft
Counted as Living Area: No

Heated: Yes
Finished: Yes
Enclosed: Yes
Contiguous: Yes
Permitted: Yes
Wet Space: No
Addition: No
Conversion: No

503 Cleveland Avenue, Locust Grove Park, Salem, Salem, Virginia, United States, 24153

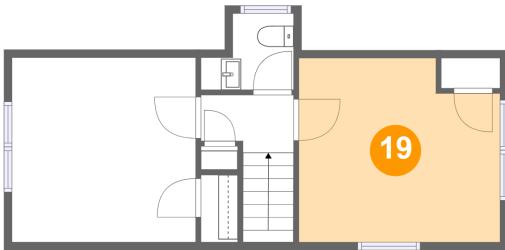
18 Floor 4 - Hall



Dimensions: 5'11" x 3'8"
Area: 39 sq. ft
Counted as Living Area:
Yes

Heated: Yes
Finished: Yes
Enclosed: Yes
Contiguous:
Yes
Permitted: Yes
Wet Space: No
Addition: No
Conversion: No

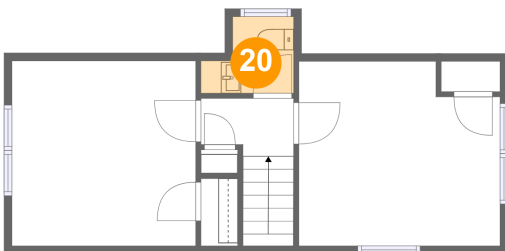
19 Floor 4 - Bedroom



Dimensions: 12'11" x 11'9"
Area: 142 sq. ft
Counted as Living Area: No

Heated: Yes
Finished: Yes
Enclosed: Yes
Contiguous: Yes
Permitted: Yes
Wet Space: No
Addition: No
Conversion: No

20 Floor 4 - Wc



Dimensions: 4'8" x 4'11"
Area: 23 sq. ft
Counted as Living Area:
Yes

Heated: Yes
Finished: Yes
Enclosed: Yes
Contiguous:
Yes
Permitted: Yes
Wet Space: Yes
Addition: No
Conversion: No