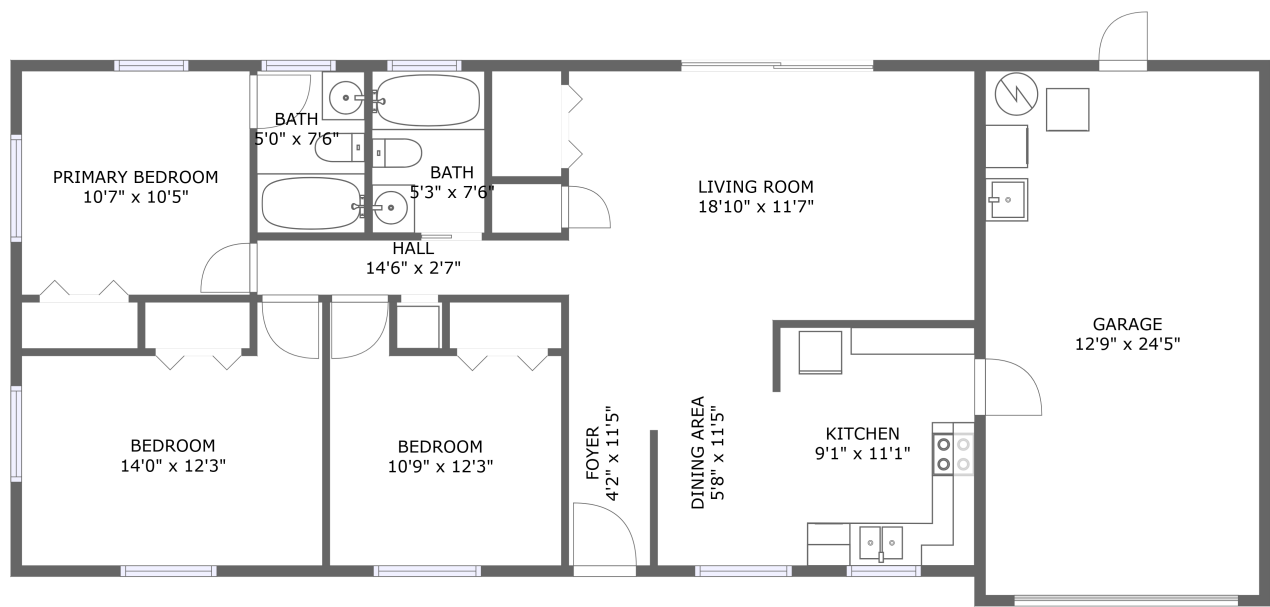


Home report

1509 South Evergreen Avenue, Brookhill, Clearwater, Pinellas County, Florida, United States, 33756



FLOOR 1


Total Area: 1022 sq. ft


Floor 1: 1022 sq. ft

Excluded: Garage 311 sq. ft, Walls: 95 sq. ft

Property summary

 1 Floors

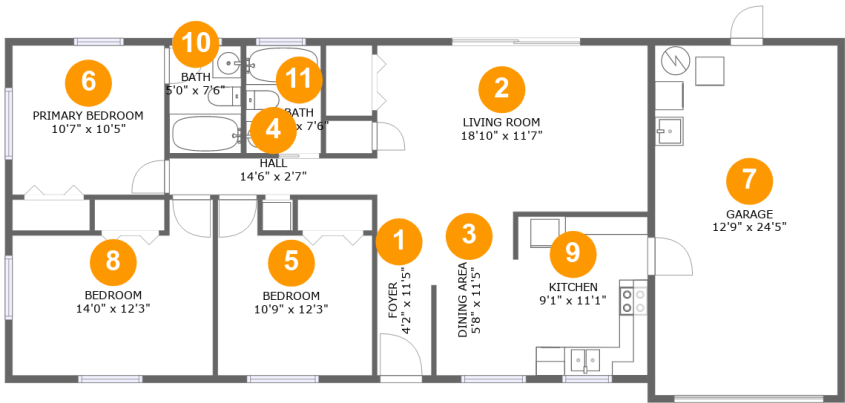
 3 Bedrooms

 2 Bathrooms

 1 Garages

Home report

1509 South Evergreen Avenue, Brookhill, Clearwater, Pinellas County, Florida, United States, 33756



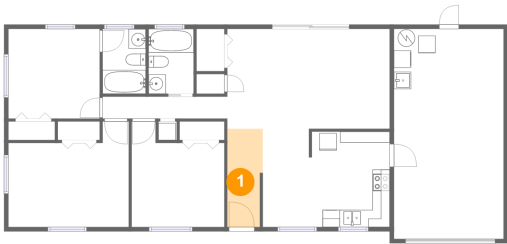
Room dimensions

Floor 1 Total:1022sqft Excluded: 311sqft

#		Max Dimensions	sqft	Included
1	Foyer	4'2" x 11'5"	45 sq. ft	Yes
2	Living Room	18'10" x 11'7"	219 sq. ft	Yes
3	Dining Area	5'8" x 11'5"	64 sq. ft	Yes
4	Hall	14'6" x 2'7"	37 sq. ft	Yes
5	Bedroom	10'9" x 12'3"	112 sq. ft	Yes
6	Primary Bedroom	10'7" x 10'5"	111 sq. ft	Yes
7	Garage	12'9" x 24'5"	311 sq. ft	No
8	Bedroom	14'0" x 12'3"	144 sq. ft	Yes
9	Kitchen	9'1" x 11'1"	100 sq. ft	Yes
10	Bath	5'0" x 7'6"	38 sq. ft	Yes
11	Bath	5'3" x 7'6"	40 sq. ft	Yes

1509 South Evergreen Avenue, Brookhill, Clearwater, Pinellas
County, Florida, United States, 33756

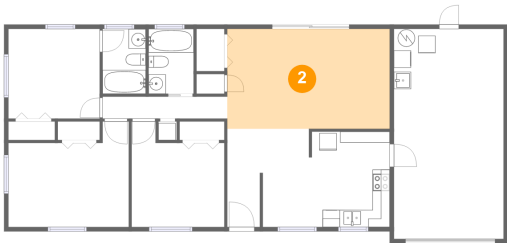
1 Floor 1 - Foyer



Max Dimensions: 4'2" x 11'5"
Calculated Area: 45 sq. ft
Included: Yes

Heated: Yes
Finished: Yes
Enclosed: Yes
Contiguous: Yes
Permitted: Yes
Wet space: No
Addition: No
Conversion: No

2 Floor 1 - Living Room

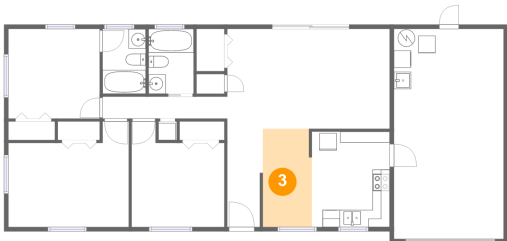


Max Dimensions: 18'10" x 11'7"
Calculated Area: 219 sq. ft
Included: Yes

Heated: Yes
Finished: Yes
Enclosed: Yes
Contiguous: Yes
Permitted: Yes
Wet space: No
Addition: No
Conversion: No

1509 South Evergreen Avenue, Brookhill, Clearwater, Pinellas
County, Florida, United States, 33756

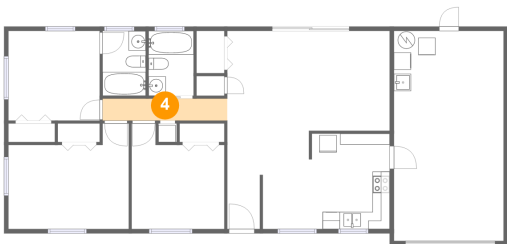
3 Floor 1 - Dining Area



Max Dimensions: 5'8" x 11'5"
Calculated Area: 64 sq. ft
Included: Yes

Heated: Yes
Finished: Yes
Enclosed: Yes
Contiguous: Yes
Permitted: Yes
Wet space: No
Addition: No
Conversion: No

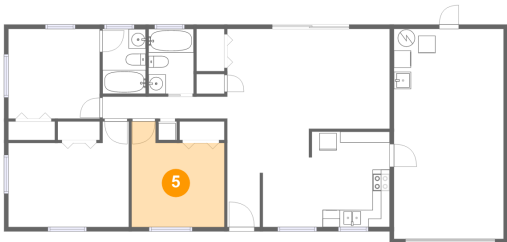
4 Floor 1 - Hall



Max Dimensions: 14'6" x 2'7"
Calculated Area: 37 sq. ft
Included: Yes

Heated: Yes
Finished: Yes
Enclosed: Yes
Contiguous: Yes
Permitted: Yes
Wet space: No
Addition: No
Conversion: No

5 Floor 1 - Bedroom

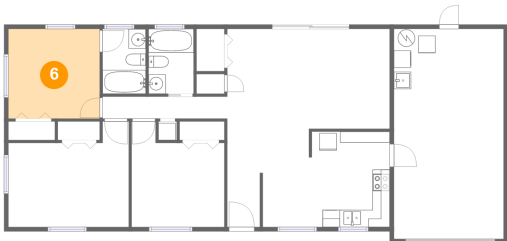


Max Dimensions: 10'9" x 12'3"
Calculated Area: 112 sq. ft
Included: Yes

Heated: Yes
Finished: Yes
Enclosed: Yes
Contiguous: Yes
Permitted: Yes
Wet space: No
Addition: No
Conversion: No

1509 South Evergreen Avenue, Brookhill, Clearwater, Pinellas
County, Florida, United States, 33756

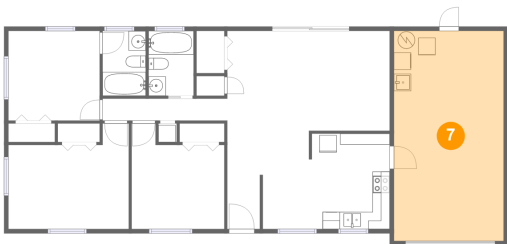
6 Floor 1 - Primary Bedroom



Max Dimensions: 10'7" x 10'5"
Calculated Area: 111 sq. ft
Included: Yes

Heated: Yes
Finished: Yes
Enclosed: Yes
Contiguous: Yes
Permitted: Yes
Wet space: No
Addition: No
Conversion: No

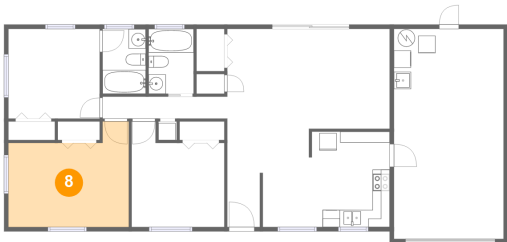
7 Floor 1 - Garage



Max Dimensions: 12'9" x 24'5"
Calculated Area: 311 sq. ft
Included: No

Heated: No
Finished: No
Enclosed: Yes
Contiguous: Yes
Permitted: Yes
Wet space: No
Addition: No
Conversion: No

8 Floor 1 - Bedroom

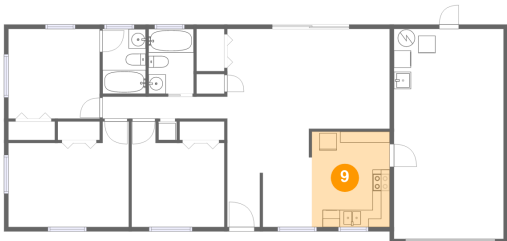


Max Dimensions: 14'0" x 12'3"
Calculated Area: 144 sq. ft
Included: Yes

Heated: Yes
Finished: Yes
Enclosed: Yes
Contiguous: Yes
Permitted: Yes
Wet space: No
Addition: No
Conversion: No

1509 South Evergreen Avenue, Brookhill, Clearwater, Pinellas
County, Florida, United States, 33756

9 Floor 1 - Kitchen



Max Dimensions: 9'1" x 11'1"
Calculated Area: 100 sq. ft
Included: Yes

Heated: Yes
Finished: Yes
Enclosed: Yes
Contiguous: Yes
Permitted: Yes
Wet space: No
Addition: No
Conversion: No

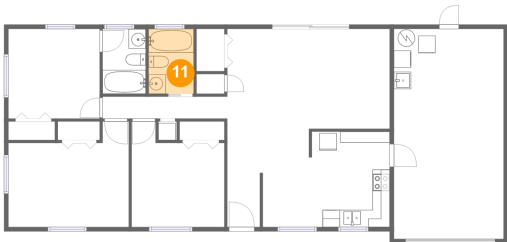
10 Floor 1 - Bath



Max Dimensions: 5'0" x 7'6"
Calculated Area: 38 sq. ft
Included: Yes

Heated: Yes
Finished: Yes
Enclosed: Yes
Contiguous: Yes
Permitted: Yes
Wet space: Yes
Addition: No
Conversion: No

11 Floor 1 - Bath



Max Dimensions: 5'3" x 7'6"
Calculated Area: 40 sq. ft
Included: Yes

Heated: Yes
Finished: Yes
Enclosed: Yes
Contiguous: Yes
Permitted: Yes
Wet space: Yes
Addition: No
Conversion: No