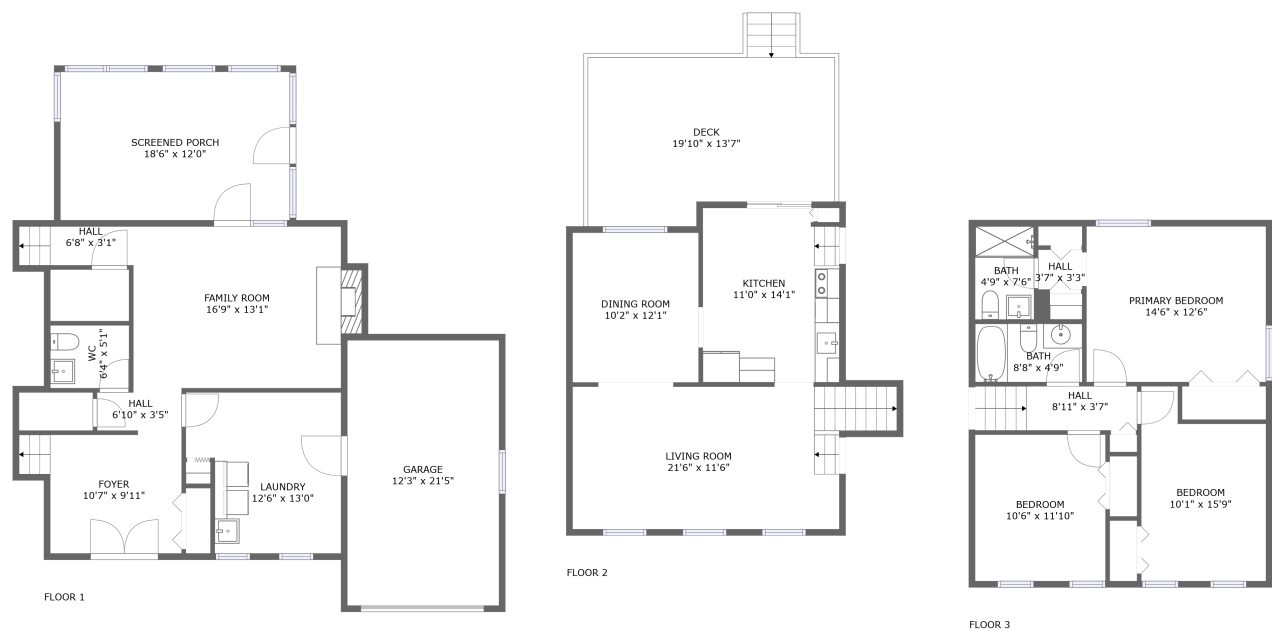


Home report

19924 Westerly Avenue, Westerly, Poolesville, Montgomery County, Maryland, United States, 20837



Total Area: 1870 sq. ft

Floor 1: 646 sq. ft, Floor 2: 553 sq. ft, Floor 3: 671 sq. ft
Excluded: Garage 262 sq. ft, Screened porch 221 sq. ft, Fireplace 10 sq. ft, Deck 249 sq. ft, Walls: 206 sq. ft

Property summary

 **3** Floors

 **3** Bedrooms

 **2** Bathrooms

Home report

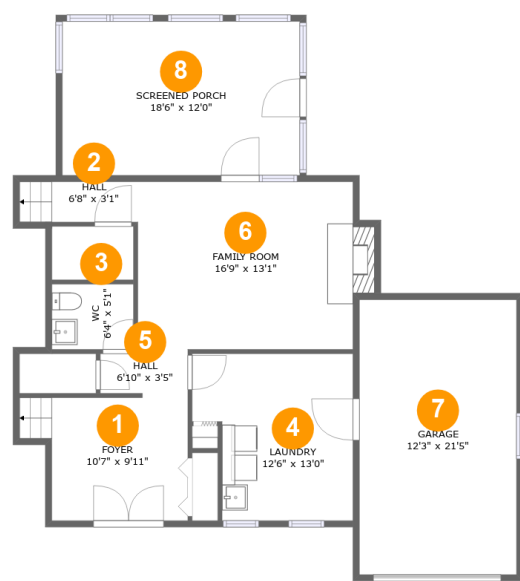
19924 Westerly Avenue, Westerly, Poolesville, Montgomery
County, Maryland, United States, 20837

 **1**
Half baths

 **1**
Garages

Home report

19924 Westerly Avenue, Westerly, Poolesville, Montgomery
County, Maryland, United States, 20837



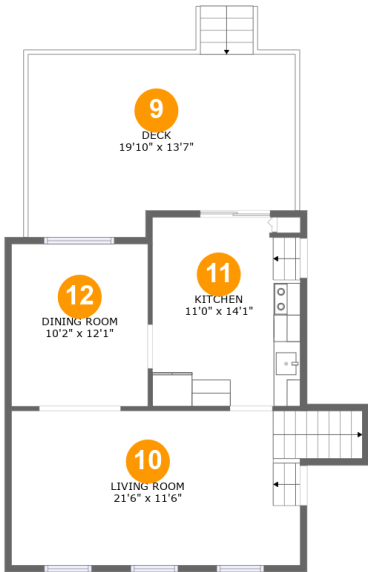
Room dimensions

Floor 1 Total:646sqft Excluded: 493sqft

#		Max Dimensions	sqft	Included
1	Foyer	10'7" x 9'11"	111 sq. ft	Yes
2	Hall	6'8" x 3'1"	29 sq. ft	Yes
3	WC	6'4" x 5'1"	32 sq. ft	Yes
4	Laundry	12'6" x 13'0"	145 sq. ft	Yes
5	Hall	6'10" x 3'5"	22 sq. ft	Yes
6	Family Room	16'9" x 13'1"	227 sq. ft	Yes
7	Garage	12'3" x 21'5"	262 sq. ft	No
8	Screened Porch	18'6" x 12'0"	221 sq. ft	No

Home report

19924 Westerly Avenue, Westerly, Poolesville, Montgomery County, Maryland, United States, 20837

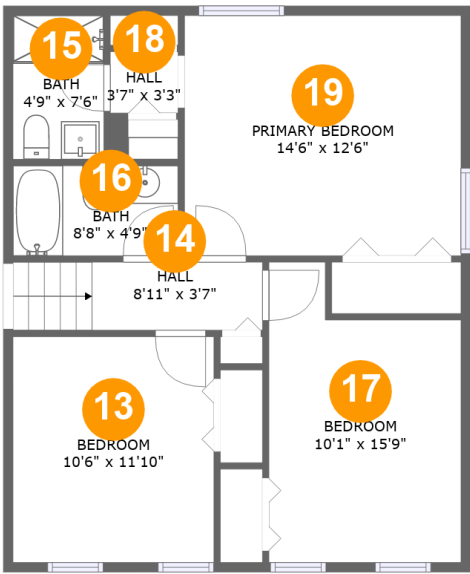


Room dimensions

Floor 2 Total:553sqft Excluded: 249sqft

#		Max Dimensions	sqft	Included
9	Deck	19'10" x 13'7"	249 sq. ft	No
10	Living Room	21'6" x 11'6"	264 sq. ft	Yes
11	Kitchen	11'0" x 14'1"	152 sq. ft	Yes
12	Dining Room	10'2" x 12'1"	123 sq. ft	Yes

19924 Westerly Avenue, Westerly, Poolesville, Montgomery County, Maryland, United States, 20837



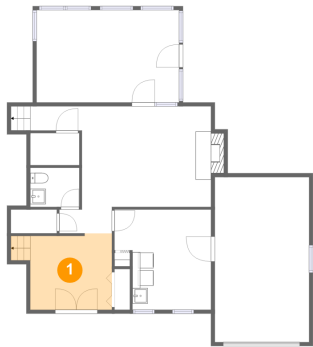
Room dimensions

Floor 3 Total:671sqft Excluded: 0sqft

#		Max Dimensions	sqft	Included
13	Bedroom	10'6" x 11'10"	124 sq. ft	Yes
14	Hall	8'11" x 3'7"	47 sq. ft	Yes
15	Bath	4'9" x 7'6"	36 sq. ft	Yes
16	Bath	8'8" x 4'9"	41 sq. ft	Yes
17	Bedroom	10'1" x 15'9"	137 sq. ft	Yes
18	Hall	3'7" x 3'3"	11 sq. ft	Yes
19	Primary Bedroom	14'6" x 12'6"	182 sq. ft	Yes

19924 Westerly Avenue, Westerly, Poolesville, Montgomery
County, Maryland, United States, 20837

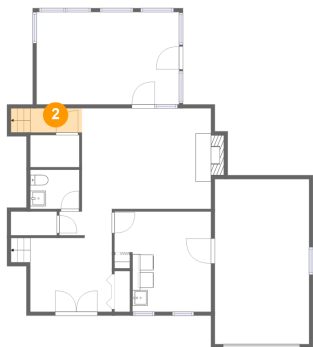
1 Floor 1 - Foyer



Max Dimensions: 10'7" x 9'11"
Calculated Area: 111 sq. ft
Included: Yes

Heated: Yes
Finished: Yes
Enclosed: Yes
Contiguous: Yes
Permitted: Yes
Wet space: No
Addition: No
Conversion: No

2 Floor 1 - Hall

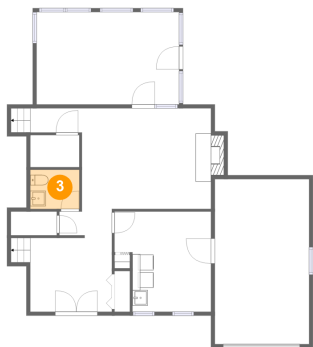


Max Dimensions: 6'8" x 3'1"
Calculated Area: 29 sq. ft
Included: Yes

Heated: Yes
Finished: Yes
Enclosed: Yes
Contiguous: Yes
Permitted: Yes
Wet space: No
Addition: No
Conversion: No

19924 Westerly Avenue, Westerly, Poolesville, Montgomery
County, Maryland, United States, 20837

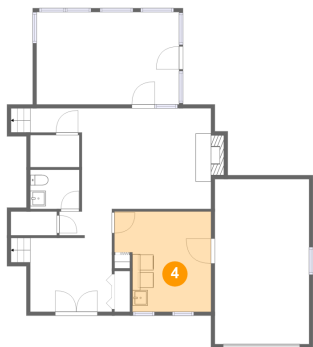
3 Floor 1 - WC



Max Dimensions: 6'4" x 5'1"
Calculated Area: 32 sq. ft
Included: Yes

Heated: Yes
Finished: Yes
Enclosed: Yes
Contiguous: Yes
Permitted: Yes
Wet space: Yes
Addition: No
Conversion: No

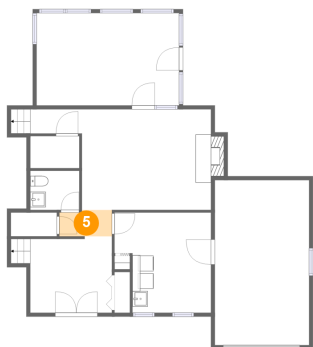
4 Floor 1 - Laundry



Max Dimensions: 12'6" x 13'0"
Calculated Area: 145 sq. ft
Included: Yes

Heated: Yes
Finished: Yes
Enclosed: Yes
Contiguous: Yes
Permitted: Yes
Wet space: No
Addition: No
Conversion: No

5 Floor 1 - Hall

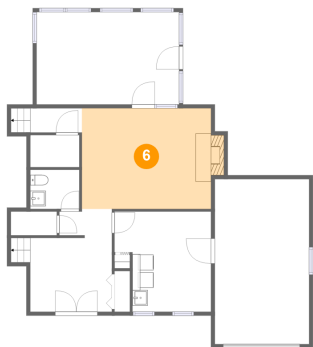


Max Dimensions: 6'10" x 3'5"
Calculated Area: 22 sq. ft
Included: Yes

Heated: Yes
Finished: Yes
Enclosed: Yes
Contiguous: Yes
Permitted: Yes
Wet space: No
Addition: No
Conversion: No

19924 Westerly Avenue, Westerly, Poolesville, Montgomery
County, Maryland, United States, 20837

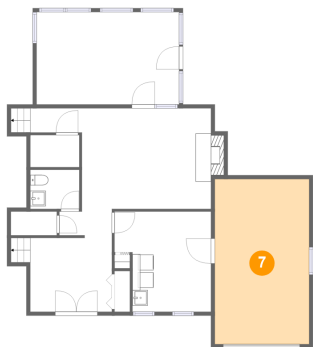
6 Floor 1 - Family Room



Max Dimensions: 16'9" x 13'1"
Calculated Area: 227 sq. ft
Included: Yes

Heated: Yes
Finished: Yes
Enclosed: Yes
Contiguous: Yes
Permitted: Yes
Wet space: No
Addition: No
Conversion: No

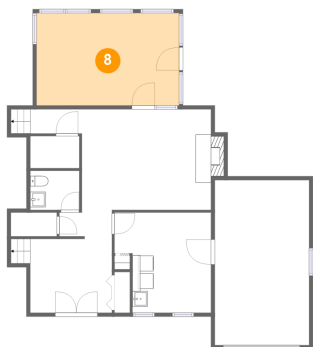
7 Floor 1 - Garage



Max Dimensions: 12'3" x 21'5"
Calculated Area: 262 sq. ft
Included: No

Heated: No
Finished: No
Enclosed: Yes
Contiguous: Yes
Permitted: Yes
Wet space: No
Addition: No
Conversion: No

8 Floor 1 - Screened Porch

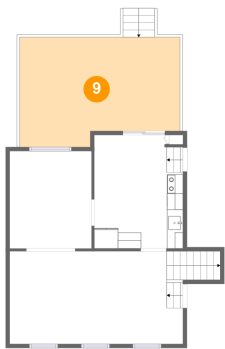


Max Dimensions: 18'6" x 12'0"
Calculated Area: 221 sq. ft
Included: No

Heated: No
Finished: Yes
Enclosed: No
Contiguous: Yes
Permitted: Yes
Wet space: No
Addition: No
Conversion: No

19924 Westerly Avenue, Westerly, Poolesville, Montgomery
County, Maryland, United States, 20837

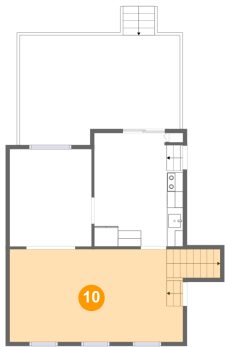
9 Floor 2 - Deck



Max Dimensions: 19'10" x 13'7"
Calculated Area: 249 sq. ft
Included: No

Heated: No
Finished: Yes
Enclosed: No
Contiguous: Yes
Permitted: Yes
Wet space: No
Addition: No
Conversion: No

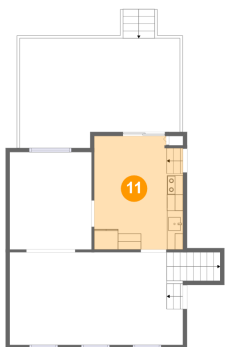
10 Floor 2 - Living Room



Max Dimensions: 21'6" x 11'6"
Calculated Area: 264 sq. ft
Included: Yes

Heated: Yes
Finished: Yes
Enclosed: Yes
Contiguous: Yes
Permitted: Yes
Wet space: No
Addition: No
Conversion: No

11 Floor 2 - Kitchen

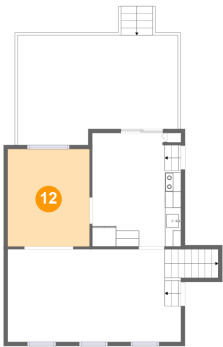


Max Dimensions: 11'0" x 14'1"
Calculated Area: 152 sq. ft
Included: Yes

Heated: Yes
Finished: Yes
Enclosed: Yes
Contiguous: Yes
Permitted: Yes
Wet space: No
Addition: No
Conversion: No

19924 Westerly Avenue, Westerly, Poolesville, Montgomery
County, Maryland, United States, 20837

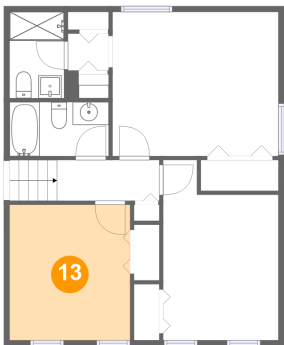
12 Floor 2 - Dining Room



Max Dimensions: 10'2" x 12'1"
Calculated Area: 123 sq. ft
Included: Yes

Heated: Yes
Finished: Yes
Enclosed: Yes
Contiguous: Yes
Permitted: Yes
Wet space: No
Addition: No
Conversion: No

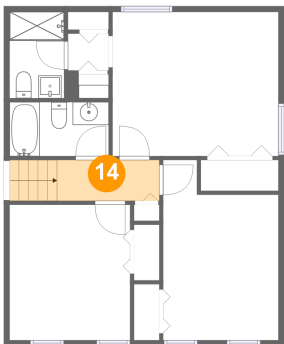
13 Floor 3 - Bedroom



Max Dimensions: 10'6" x 11'10"
Calculated Area: 124 sq. ft
Included: Yes

Heated: Yes
Finished: Yes
Enclosed: Yes
Contiguous: Yes
Permitted: Yes
Wet space: No
Addition: No
Conversion: No

14 Floor 3 - Hall

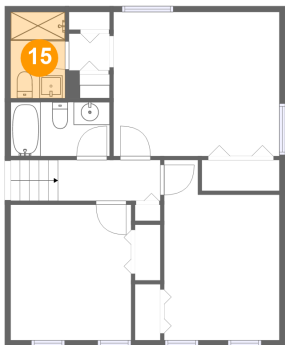


Max Dimensions: 8'11" x 3'7"
Calculated Area: 47 sq. ft
Included: Yes

Heated: Yes
Finished: Yes
Enclosed: Yes
Contiguous: Yes
Permitted: Yes
Wet space: No
Addition: No
Conversion: No

19924 Westerly Avenue, Westerly, Poolesville, Montgomery
County, Maryland, United States, 20837

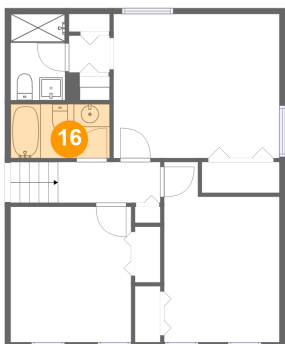
15 Floor 3 - Bath



Max Dimensions: 4'9" x 7'6"
Calculated Area: 36 sq. ft
Included: Yes

Heated: Yes
Finished: Yes
Enclosed: Yes
Contiguous: Yes
Permitted: Yes
Wet space: Yes
Addition: No
Conversion: No

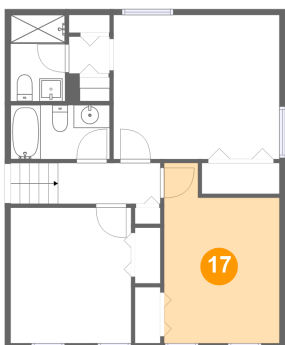
16 Floor 3 - Bath



Max Dimensions: 8'8" x 4'9"
Calculated Area: 41 sq. ft
Included: Yes

Heated: Yes
Finished: Yes
Enclosed: Yes
Contiguous: Yes
Permitted: Yes
Wet space: Yes
Addition: No
Conversion: No

17 Floor 3 - Bedroom

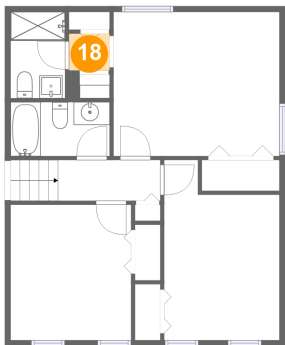


Max Dimensions: 10'1" x 15'9"
Calculated Area: 137 sq. ft
Included: Yes

Heated: Yes
Finished: Yes
Enclosed: Yes
Contiguous: Yes
Permitted: Yes
Wet space: No
Addition: No
Conversion: No

19924 Westerly Avenue, Westerly, Poolesville, Montgomery
County, Maryland, United States, 20837

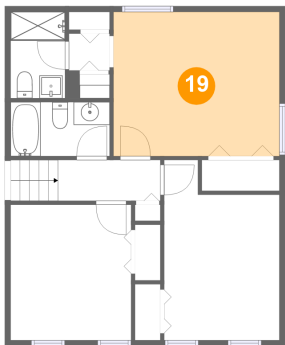
18 Floor 3 - Hall



Max Dimensions: 3'7" x 3'3"
Calculated Area: 11 sq. ft
Included: Yes

Heated: Yes
Finished: Yes
Enclosed: Yes
Contiguous: Yes
Permitted: Yes
Wet space: No
Addition: No
Conversion: No

19 Floor 3 - Primary Bedroom



Max Dimensions: 14'6" x 12'6"
Calculated Area: 182 sq. ft
Included: Yes

Heated: Yes
Finished: Yes
Enclosed: Yes
Contiguous: Yes
Permitted: Yes
Wet space: No
Addition: No
Conversion: No