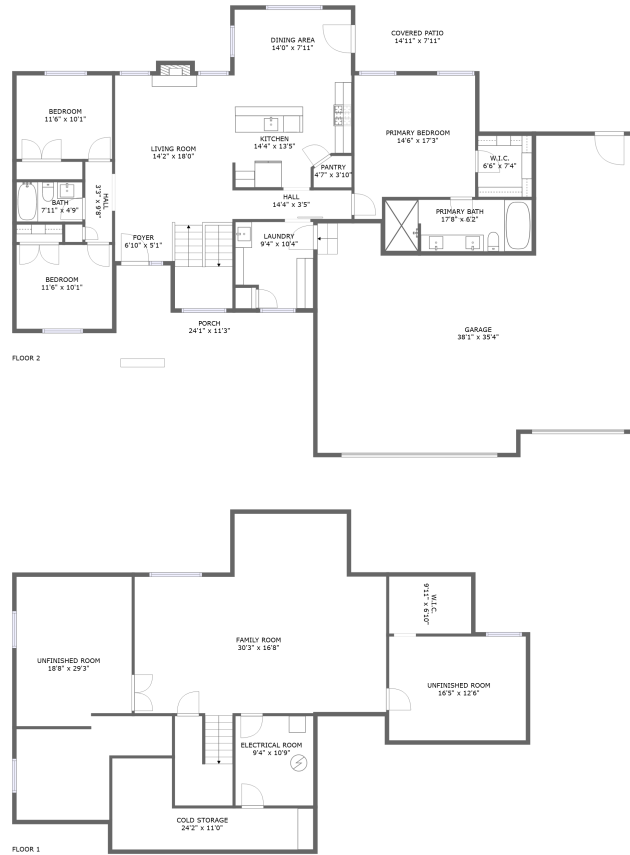


5050 Tessa Cir, Pocatello, Bannock County, Idaho, United States, 83202

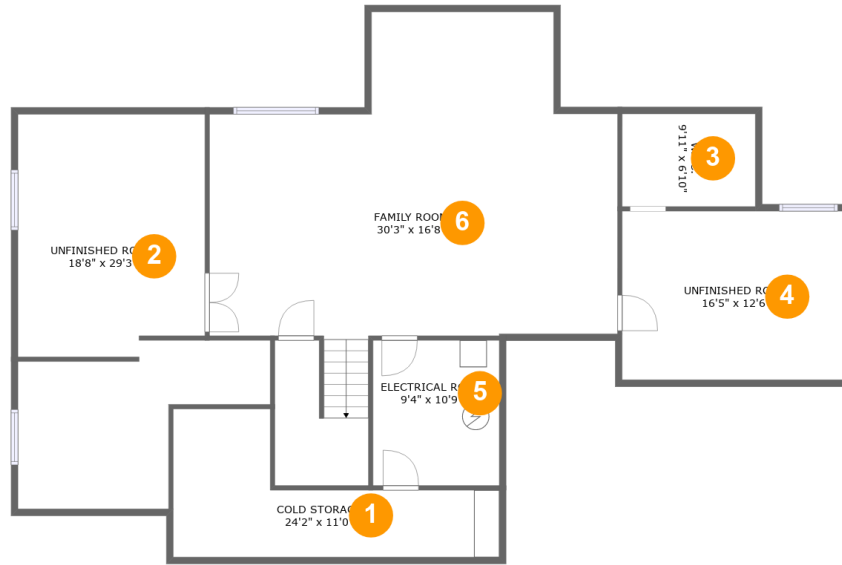


Property Summary

 **1** garages  **3** bedrooms  **2** bathrooms  **0** half baths

 **2** floors  **2,928** Gross Living Area sqft  **4,855** total sqft

5050 Tessa Cir, Pocatello, Bannock County, Idaho, United States, 83202



Room Dimensions

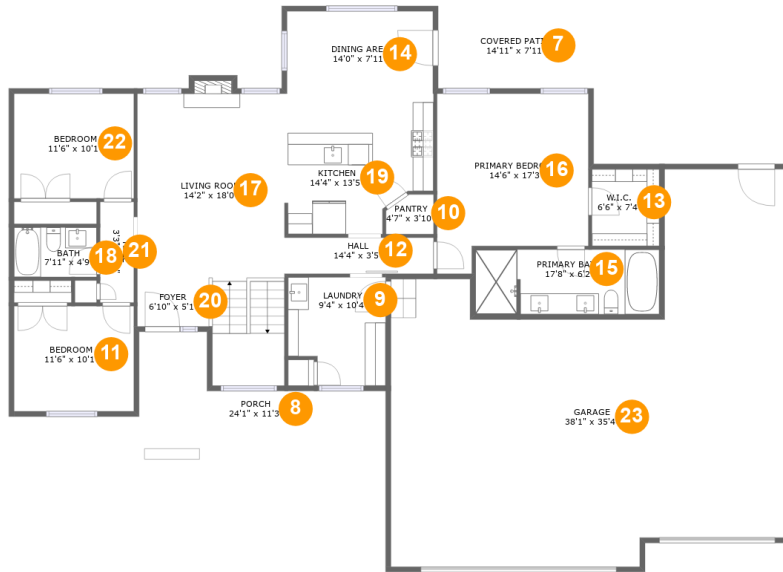
Floor 1

Total sqft: 1763

Living area: 1248

#	Room name	Dimensions	Area (sqft)	Counted as Living Area
1	Cold Storage	24'2" x 11'0"	163 sq. ft	No
2	Unfinished Room	18'8" x 29'3"	403 sq. ft	Yes
3	W.i.c.	9'11" x 6'10"	68 sq. ft	Yes
4	Unfinished Room	16'5" x 12'6"	206 sq. ft	No
5	Electrical Room	9'4" x 10'9"	101 sq. ft	No
6	Family Room	30'3" x 16'8"	672 sq. ft	Yes

5050 Tessa Cir, Pocatello, Bannock County, Idaho, United States, 83202



Room Dimensions

Floor 2

Total sqft: 3092

Living area: 1680

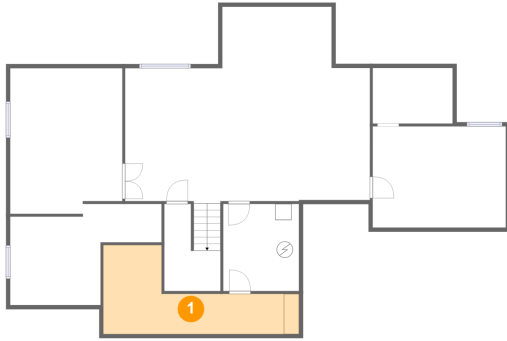
#	Room name	Dimensions	Area (sqft)	Counted as Living Area
7	Covered Patio	14'11" x 7'11"	118 sq. ft	No
8	Porch	24'1" x 11'3"	170 sq. ft	No
9	Laundry	9'4" x 10'4"	90 sq. ft	Yes
10	Pantry	4'7" x 3'10"	16 sq. ft	Yes
11	Bedroom	11'6" x 10'1"	116 sq. ft	Yes
12	Hall	14'4" x 3'5"	50 sq. ft	Yes
13	W.i.c.	6'6" x 7'4"	48 sq. ft	Yes
14	Dining Area	14'0" x 7'11"	111 sq. ft	Yes
15	Primary Bath	17'8" x 6'2"	109 sq. ft	Yes
16	Primary Bedroom	14'6" x 17'3"	221 sq. ft	Yes
17	Living Room	14'2" x 18'0"	325 sq. ft	Yes

**5050 Tessa Cir, Pocatello, Bannock County,
Idaho, United States, 83202**

#	Room name	Dimensions	Area (sqft)	Counted as Living Area
18	Bath	7'11" x 4'9"	38 sq. ft	Yes
19	Kitchen	14'4" x 13'5"	174 sq. ft	Yes
20	Foyer	6'10" x 5'1"	35 sq. ft	Yes
21	Hall	3'3" x 9'8"	31 sq. ft	Yes
22	Bedroom	11'6" x 10'1"	116 sq. ft	Yes
23	Garage	38'1" x 35'4"	1065 sq. ft	No

5050 Tessa Cir, Pocatello, Bannock County, Idaho, United States, 83202

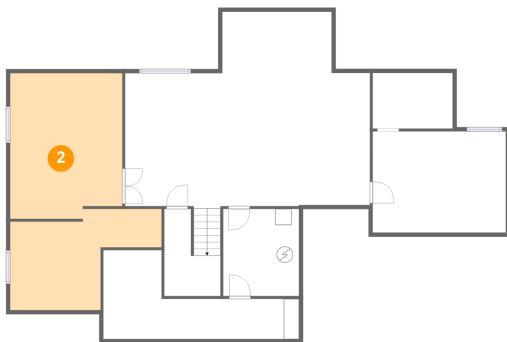
1 Floor 1 - Cold Storage



Dimensions: 24'2" x 11'0"
Area: 163 sq. ft
Counted as Living Area: No

Heated: No
Finished: No
Enclosed: No
Contiguous: No
Permitted: Yes
Wet Space: No
Addition: No
Conversion: No

2 Floor 1 - Unfinished Room

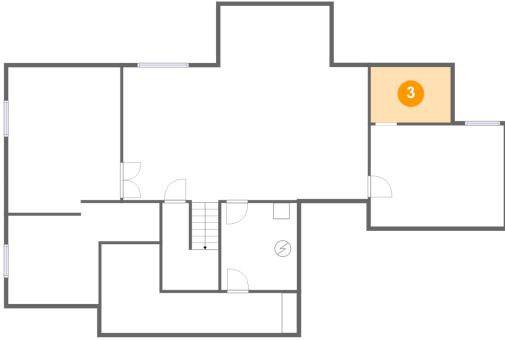


Dimensions: 18'8" x 29'3"
Area: 403 sq. ft
Counted as Living Area:
Yes

Heated: Yes
Finished: Yes
Enclosed: Yes
Contiguous:
Yes
Permitted: Yes
Wet Space: No
Addition: No
Conversion: No

5050 Tessa Cir, Pocatello, Bannock County, Idaho, United States, 83202

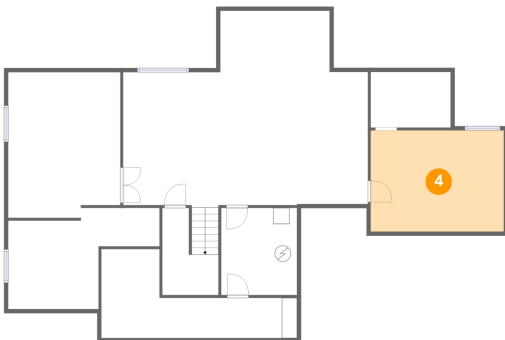
3 Floor 1 - W.i.c.



Dimensions: 9'11" x 6'10"
Area: 68 sq. ft
Counted as Living Area: Yes

Heated: Yes
Finished: Yes
Enclosed: Yes
Contiguous: Yes
Permitted: Yes
Wet Space: No
Addition: No
Conversion: No

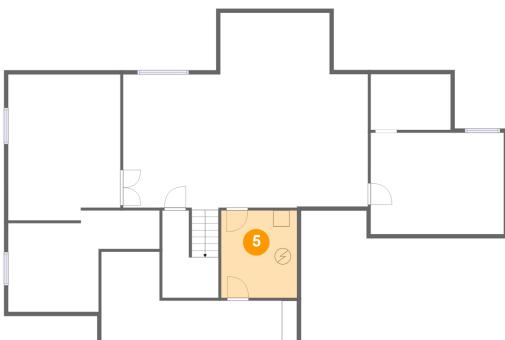
4 Floor 1 - Unfinished Room



Dimensions: 16'5" x 12'6"
Area: 206 sq. ft
Counted as Living Area: No

Heated: Yes
Finished: No
Enclosed: Yes
Contiguous: Yes
Permitted: Yes
Wet Space: No
Addition: No
Conversion: No

5 Floor 1 - Electrical Room

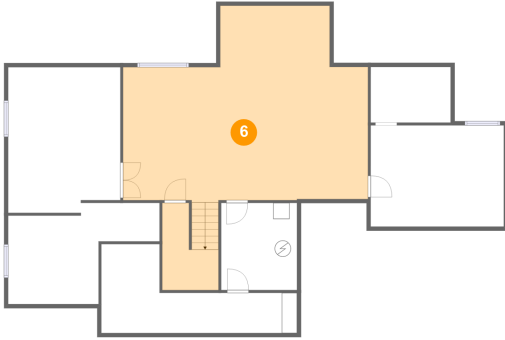


Dimensions: 9'4" x 10'9"
Area: 101 sq. ft
Counted as Living Area: No

Heated: No
Finished: No
Enclosed: Yes
Contiguous: Yes
Permitted: Yes
Wet Space: No
Addition: No
Conversion: No

5050 Tessa Cir, Pocatello, Bannock County, Idaho, United States, 83202

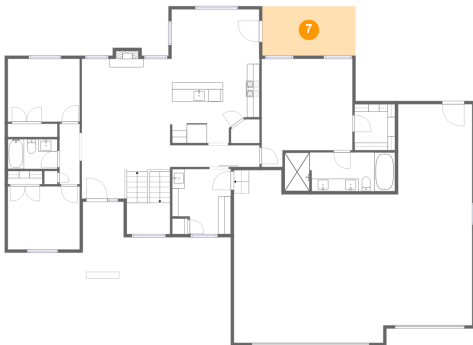
6 Floor 1 - Family Room



Dimensions: 30'3" x 16'8"
Area: 672 sq. ft
Counted as Living Area: Yes

Heated: Yes
Finished: Yes
Enclosed: Yes
Contiguous: Yes
Permitted: Yes
Wet Space: No
Addition: No
Conversion: No

7 Floor 2 - Covered Patio



Dimensions: 14'11" x 7'11"
Area: 118 sq. ft
Counted as Living Area: No

Heated: No
Finished: Yes
Enclosed: No
Contiguous: Yes
Permitted: Yes
Wet Space: No
Addition: No
Conversion: No

8 Floor 2 - Porch



Dimensions: 24'1" x 11'3"
Area: 170 sq. ft
Counted as Living Area: No

Heated: No
Finished: Yes
Enclosed: No
Contiguous: Yes
Permitted: Yes
Wet Space: No
Addition: No
Conversion: No

5050 Tessa Cir, Pocatello, Bannock County, Idaho, United States, 83202

9 Floor 2 - Laundry



Dimensions: 9'4" x 10'4"
Area: 90 sq. ft
Counted as Living Area:
Yes

Heated: Yes
Finished: Yes
Enclosed: Yes
Contiguous:
Yes
Permitted: Yes
Wet Space: No
Addition: No
Conversion: No

10 Floor 2 - Pantry



Dimensions: 4'7" x 3'10"
Area: 16 sq. ft
Counted as Living Area:
Yes

Heated: Yes
Finished: Yes
Enclosed: Yes
Contiguous:
Yes
Permitted: Yes
Wet Space: No
Addition: No
Conversion: No

11 Floor 2 - Bedroom



Dimensions: 11'6" x 10'1"
Area: 116 sq. ft
Counted as Living Area:
Yes

Heated: Yes
Finished: Yes
Enclosed: Yes
Contiguous:
Yes
Permitted: Yes
Wet Space: No
Addition: No
Conversion: No

**5050 Tessa Cir, Pocatello, Bannock County,
Idaho, United States, 83202**

12 Floor 2 - Hall



Dimensions: 14'4" x 3'5"
Area: 50 sq. ft
Counted as Living Area:
Yes

Heated: Yes
Finished: Yes
Enclosed: Yes
Contiguous:
Yes
Permitted: Yes
Wet Space: No
Addition: No
Conversion: No

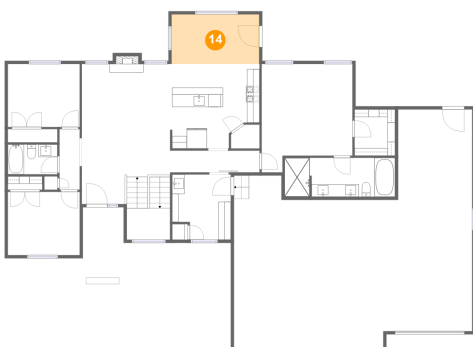
13 Floor 2 - W.i.c.



Dimensions: 6'6" x 7'4"
Area: 48 sq. ft
Counted as Living Area:
Yes

Heated: Yes
Finished: Yes
Enclosed: Yes
Contiguous:
Yes
Permitted: Yes
Wet Space: No
Addition: No
Conversion: No

14 Floor 2 - Dining Area

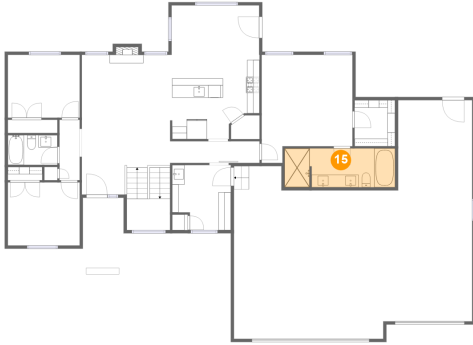


Dimensions: 14'0" x 7'11"
Area: 111 sq. ft
Counted as Living Area:
Yes

Heated: Yes
Finished: Yes
Enclosed: Yes
Contiguous:
Yes
Permitted: Yes
Wet Space: No
Addition: No
Conversion: No

**5050 Tessa Cir, Pocatello, Bannock County,
Idaho, United States, 83202**

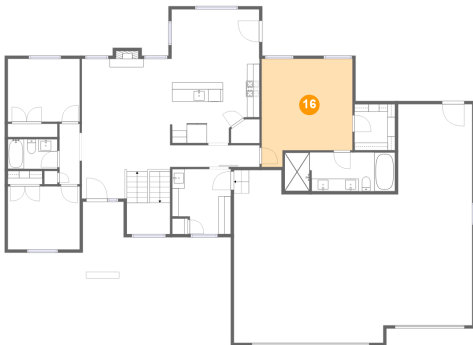
15 Floor 2 - Primary Bath



Dimensions: 17'8" x 6'2"
Area: 109 sq. ft
Counted as Living Area:
Yes

Heated: Yes
Finished: Yes
Enclosed: Yes
Contiguous:
Yes
Permitted: Yes
Wet Space: Yes
Addition: No
Conversion: No

16 Floor 2 - Primary Bedroom



Dimensions: 14'6" x 17'3"
Area: 221 sq. ft
Counted as Living Area:
Yes

Heated: Yes
Finished: Yes
Enclosed: Yes
Contiguous:
Yes
Permitted: Yes
Wet Space: No
Addition: No
Conversion: No

17 Floor 2 - Living Room

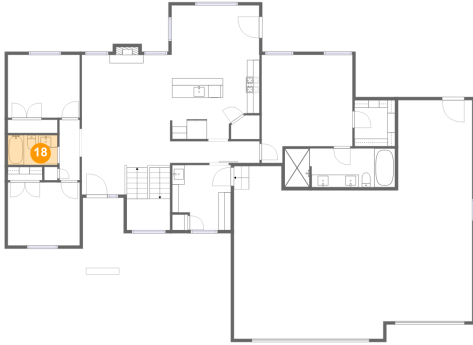


Dimensions: 14'2" x 18'0"
Area: 325 sq. ft
Counted as Living Area:
Yes

Heated: Yes
Finished: Yes
Enclosed: Yes
Contiguous:
Yes
Permitted: Yes
Wet Space: No
Addition: No
Conversion: No

**5050 Tessa Cir, Pocatello, Bannock County,
Idaho, United States, 83202**

18 Floor 2 - Bath



Dimensions: 7'11" x 4'9"
Area: 38 sq. ft
Counted as Living Area:
Yes

Heated: Yes
Finished: Yes
Enclosed: Yes
Contiguous:
Yes
Permitted: Yes
Wet Space: Yes
Addition: No
Conversion: No

19 Floor 2 - Kitchen



Dimensions: 14'4" x 13'5"
Area: 174 sq. ft
Counted as Living Area:
Yes

Heated: Yes
Finished: Yes
Enclosed: Yes
Contiguous:
Yes
Permitted: Yes
Wet Space: No
Addition: No
Conversion: No

20 Floor 2 - Foyer



Dimensions: 6'10" x 5'1"
Area: 35 sq. ft
Counted as Living Area:
Yes

Heated: Yes
Finished: Yes
Enclosed: Yes
Contiguous:
Yes
Permitted: Yes
Wet Space: No
Addition: No
Conversion: No

**5050 Tessa Cir, Pocatello, Bannock County,
Idaho, United States, 83202**

21 Floor 2 - Hall



Dimensions: 3'3" x 9'8"
Area: 31 sq. ft
Counted as Living Area:
Yes

Heated: Yes
Finished: Yes
Enclosed: Yes
Contiguous:
Yes
Permitted: Yes
Wet Space: No
Addition: No
Conversion: No

22 Floor 2 - Bedroom



Dimensions: 11'6" x 10'1"
Area: 116 sq. ft
Counted as Living Area:
Yes

Heated: Yes
Finished: Yes
Enclosed: Yes
Contiguous:
Yes
Permitted: Yes
Wet Space: No
Addition: No
Conversion: No

23 Floor 2 - Garage



Dimensions: 38'1" x 35'4"
Area: 1065 sq. ft
Counted as Living Area: No

Heated: No
Finished: No
Enclosed: Yes
Contiguous: Yes
Permitted: Yes
Wet Space: No
Addition: No
Conversion: No