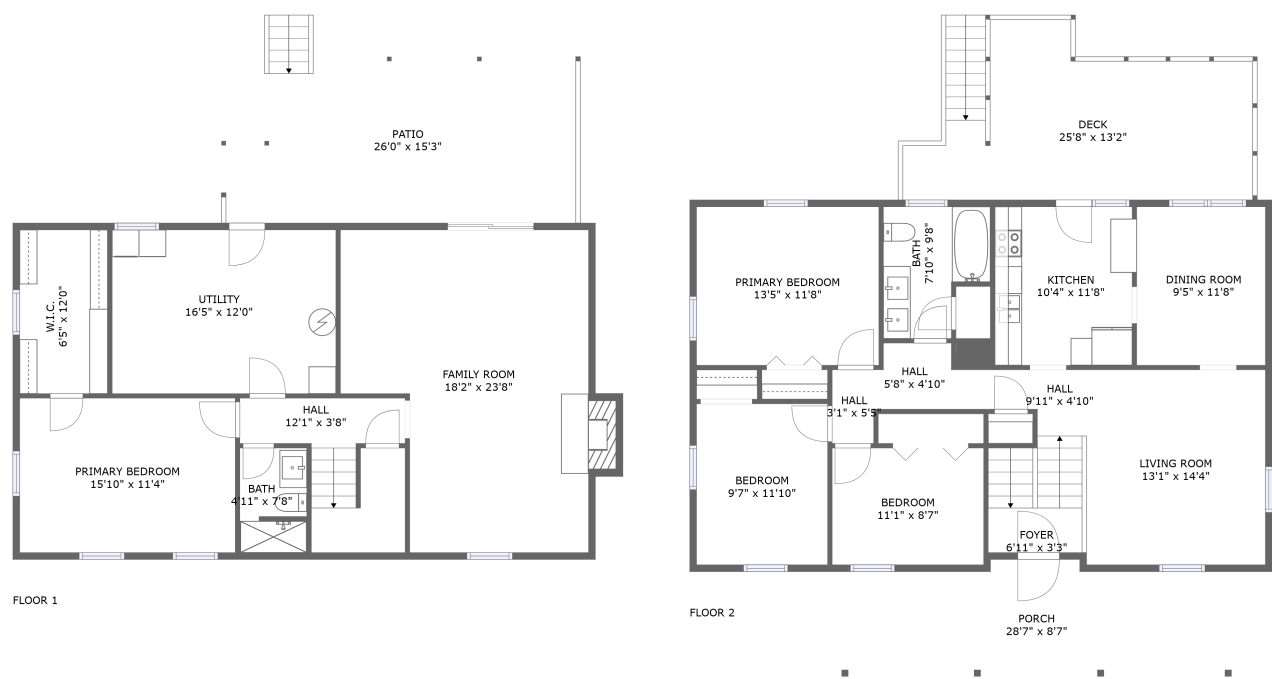


Home report

723 Finney Drive, Vinton, Virginia 24179, United States



Total Area: 1885 sq. ft
Floor 1: 794 sq. ft, Floor 2: 1091 sq. ft
Excluded: Utility 197 sq. ft, Patio 322 sq. ft, Fireplace 12 sq. ft, Porch 226 sq. ft, Deck 268 sq. ft, Walls: 133 sq. ft

Property summary

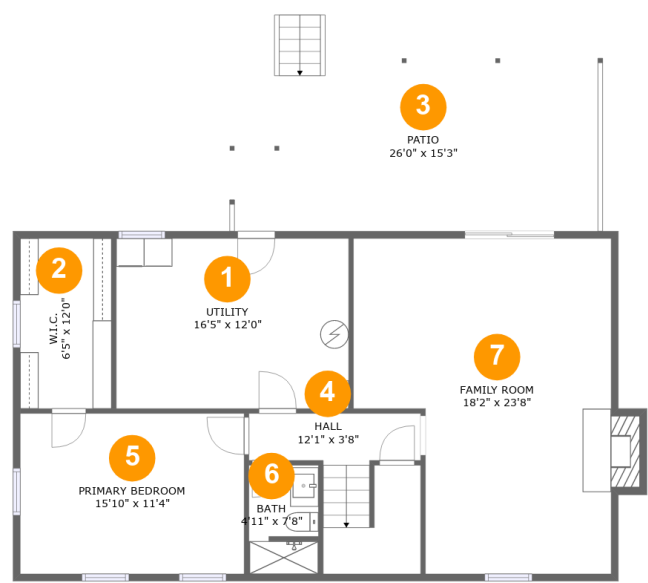
 **2** Floors

 **4** Bedrooms

 **2** Bathrooms

Home report

723 Finney Drive, Vinton, Virginia 24179, United States



Room dimensions

Floor 1

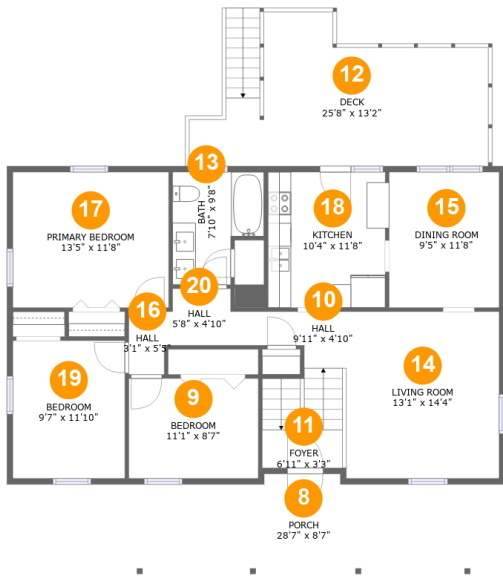
Total:794sqft

Excluded: 531sqft

#		Max Dimensions	sqft	Included
1	Utility	16'5" x 12'0"	197 sq. ft	No
2	W.I.C.	6'5" x 12'0"	78 sq. ft	Yes
3	Patio	26'0" x 15'3"	322 sq. ft	No
4	Hall	12'1" x 3'8"	93 sq. ft	Yes
5	Primary Bedroom	15'10" x 11'4"	179 sq. ft	Yes
6	Bath	4'11" x 7'8"	37 sq. ft	Yes
7	Family Room	18'2" x 23'8"	382 sq. ft	Yes

Home report

723 Finney Drive, Vinton, Virginia 24179, United States



Room dimensions

Floor 2 Total:1091sqft Excluded: 494sqft

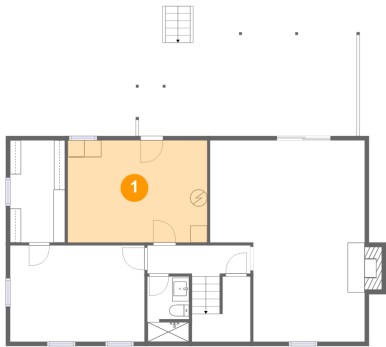
#		Max Dimensions	sqft	Included
8	Porch	28'7" x 8'7"	226 sq. ft	No
9	Bedroom	11'1" x 8'7"	95 sq. ft	Yes
10	Hall	9'11" x 4'10"	36 sq. ft	Yes
11	Foyer	6'11" x 3'3"	59 sq. ft	Yes
12	Deck	25'8" x 13'2"	268 sq. ft	No
13	Bath	7'10" x 9'8"	64 sq. ft	Yes
14	Living Room	13'1" x 14'4"	188 sq. ft	Yes
15	Dining Room	9'5" x 11'8"	110 sq. ft	Yes
16	Hall	3'1" x 5'5"	16 sq. ft	Yes
17	Primary Bedroom	13'5" x 11'8"	156 sq. ft	Yes
18	Kitchen	10'4" x 11'8"	118 sq. ft	Yes

Home report

723 Finney Drive, Vinton, Virginia 24179, United States

#		Max Dimensions	sqft	Included
19	Bedroom	9'7" x 11'10"	114 sq. ft	Yes
20	Hall	5'8" x 4'10"	26 sq. ft	Yes

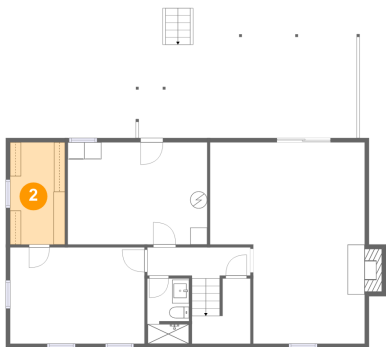
1 Floor 1 - Utility



Max Dimensions: 16'5" x 12'0"
Calculated Area: 197 sq. ft
Included: No

Heated: Yes
Finished: No
Enclosed: Yes
Contiguous: Yes
Permitted: Yes
Wet space: No
Addition: No
Conversion: No

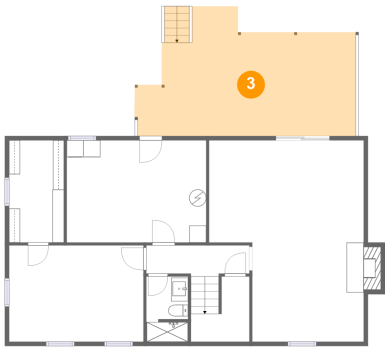
2 Floor 1 - W.I.C.



Max Dimensions: 6'5" x 12'0"
Calculated Area: 78 sq. ft
Included: Yes

Heated: Yes
Finished: Yes
Enclosed: Yes
Contiguous: Yes
Permitted: Yes
Wet space: No
Addition: No
Conversion: No

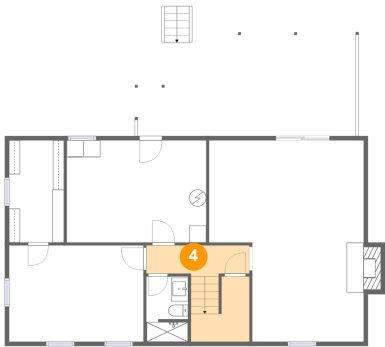
3 Floor 1 - Patio



Max Dimensions: 26'0" x 15'3"
Calculated Area: 322 sq. ft
Included: No

Heated: No
Finished: Yes
Enclosed: No
Contiguous: Yes
Permitted: Yes
Wet space: No
Addition: No
Conversion: No

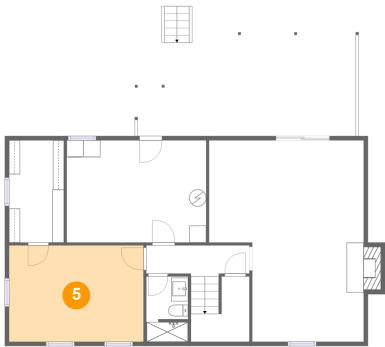
4 Floor 1 - Hall



Max Dimensions: 12'1" x 3'8"
Calculated Area: 93 sq. ft
Included: Yes

Heated: Yes
Finished: Yes
Enclosed: Yes
Contiguous: Yes
Permitted: Yes
Wet space: No
Addition: No
Conversion: No

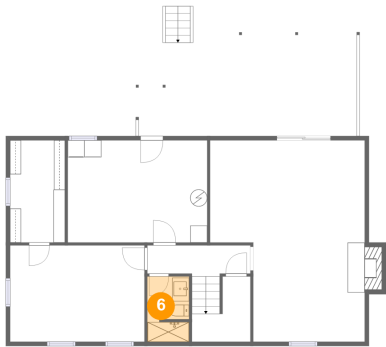
5 Floor 1 - Primary Bedroom



Max Dimensions: 15'10" x 11'4"
Calculated Area: 179 sq. ft
Included: Yes

Heated: Yes
Finished: Yes
Enclosed: Yes
Contiguous: Yes
Permitted: Yes
Wet space: No
Addition: No
Conversion: No

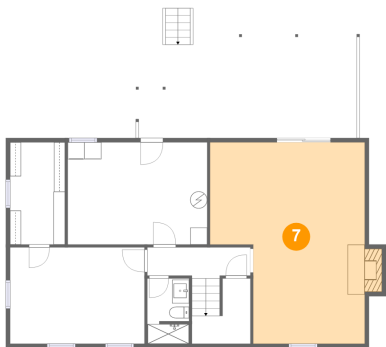
6 Floor 1 - Bath



Max Dimensions: 4'11" x 7'8"
Calculated Area: 37 sq. ft
Included: Yes

Heated: Yes
Finished: Yes
Enclosed: Yes
Contiguous: Yes
Permitted: Yes
Wet space: Yes
Addition: No
Conversion: No

7 Floor 1 - Family Room



Max Dimensions: 18'2" x 23'8"
Calculated Area: 382 sq. ft
Included: Yes

Heated: Yes
Finished: Yes
Enclosed: Yes
Contiguous: Yes
Permitted: Yes
Wet space: No
Addition: No
Conversion: No

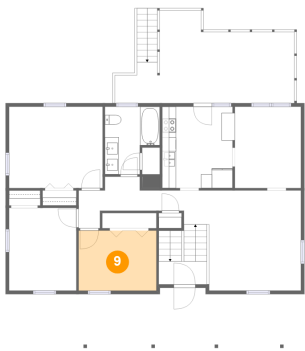
8 Floor 2 - Porch



Max Dimensions: 28'7" x 8'7"
Calculated Area: 226 sq. ft
Included: No

Heated: No
Finished: Yes
Enclosed: No
Contiguous: Yes
Permitted: Yes
Wet space: No
Addition: No
Conversion: No

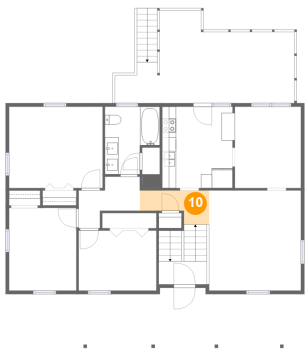
9 Floor 2 - Bedroom



Max Dimensions: 11'1" x 8'7"
Calculated Area: 95 sq. ft
Included: Yes

Heated: Yes
Finished: Yes
Enclosed: Yes
Contiguous: Yes
Permitted: Yes
Wet space: No
Addition: No
Conversion: No

10 Floor 2 - Hall



Max Dimensions: 9'11" x 4'10"
Calculated Area: 36 sq. ft
Included: Yes

Heated: Yes
Finished: Yes
Enclosed: Yes
Contiguous: Yes
Permitted: Yes
Wet space: No
Addition: No
Conversion: No

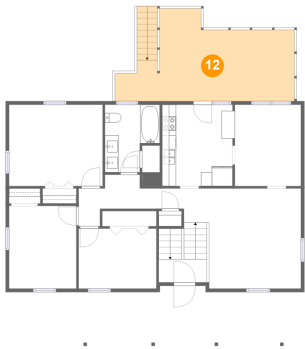
11 Floor 2 - Foyer



Max Dimensions: 6'11" x 3'3"
Calculated Area: 59 sq. ft
Included: Yes

Heated: Yes
Finished: Yes
Enclosed: Yes
Contiguous: Yes
Permitted: Yes
Wet space: No
Addition: No
Conversion: No

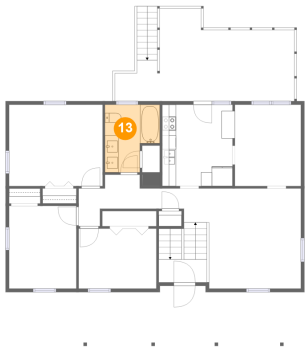
12 Floor 2 - Deck



Max Dimensions: 25'8" x 13'2"
Calculated Area: 268 sq. ft
Included: No

Heated: No
Finished: Yes
Enclosed: No
Contiguous: Yes
Permitted: Yes
Wet space: No
Addition: No
Conversion: No

13 Floor 2 - Bath



Max Dimensions: 7'10" x 9'8"
Calculated Area: 64 sq. ft
Included: Yes

Heated: Yes
Finished: Yes
Enclosed: Yes
Contiguous: Yes
Permitted: Yes
Wet space: Yes
Addition: No
Conversion: No

14 Floor 2 - Living Room



Max Dimensions: 13'1" x 14'4"
Calculated Area: 188 sq. ft
Included: Yes

Heated: Yes
Finished: Yes
Enclosed: Yes
Contiguous: Yes
Permitted: Yes
Wet space: No
Addition: No
Conversion: No

15 Floor 2 - Dining Room



Max Dimensions: 9'5" x 11'8"
Calculated Area: 110 sq. ft
Included: Yes

Heated: Yes
Finished: Yes
Enclosed: Yes
Contiguous: Yes
Permitted: Yes
Wet space: No
Addition: No
Conversion: No

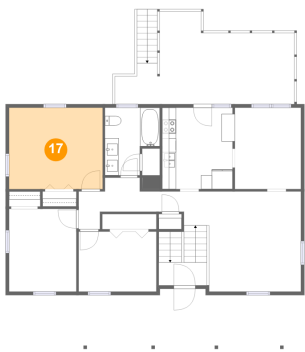
16 Floor 2 - Hall



Max Dimensions: 3'1" x 5'5"
Calculated Area: 16 sq. ft
Included: Yes

Heated: Yes
Finished: Yes
Enclosed: Yes
Contiguous: Yes
Permitted: Yes
Wet space: No
Addition: No
Conversion: No

17 Floor 2 - Primary Bedroom



Max Dimensions: 13'5" x 11'8"
Calculated Area: 156 sq. ft
Included: Yes

Heated: Yes
Finished: Yes
Enclosed: Yes
Contiguous: Yes
Permitted: Yes
Wet space: No
Addition: No
Conversion: No

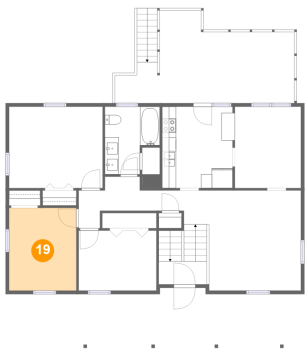
18 Floor 2 - Kitchen



Max Dimensions: 10'4" x 11'8"
Calculated Area: 118 sq. ft
Included: Yes

Heated: Yes
Finished: Yes
Enclosed: Yes
Contiguous: Yes
Permitted: Yes
Wet space: No
Addition: No
Conversion: No

19 Floor 2 - Bedroom



Max Dimensions: 9'7" x 11'10"
Calculated Area: 114 sq. ft
Included: Yes

Heated: Yes
Finished: Yes
Enclosed: Yes
Contiguous: Yes
Permitted: Yes
Wet space: No
Addition: No
Conversion: No

20 Floor 2 - Hall



Max Dimensions: 5'8" x 4'10"
Calculated Area: 26 sq. ft
Included: Yes

Heated: Yes
Finished: Yes
Enclosed: Yes
Contiguous: Yes
Permitted: Yes
Wet space: No
Addition: No
Conversion: No