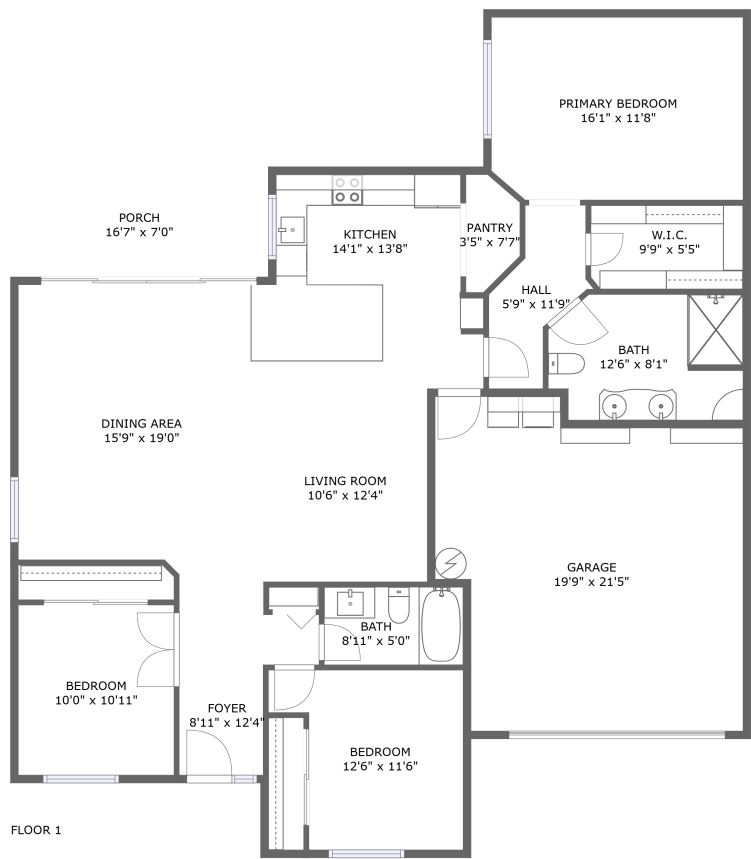
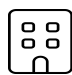




**1097 Roble Way, Siena Oaks, Palm Beach  
Gardens, Palm Beach County, Florida, United**





**Property Summary**


 **1** floors

 **3** bedrooms

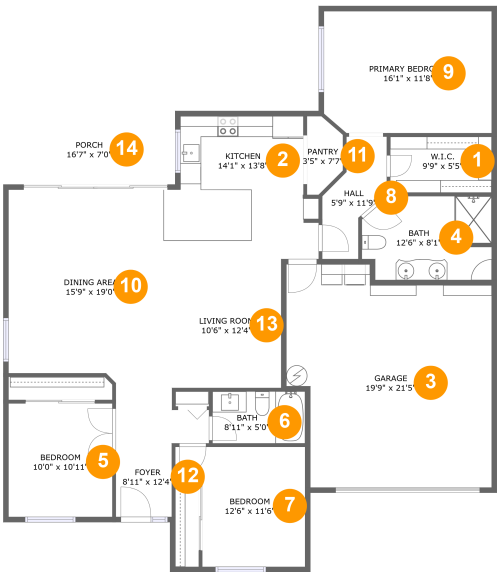
 **2** bathrooms

 **2,056** total sqft

 **1** garages

 **1,544** Gross Living Area sqft

1097 Roble Way, Siena Oaks, Palm Beach  
Gardens, Palm Beach County, Florida, United



Room Dimensions

Floor 1 Total sqft: 2056 Living area: 1544

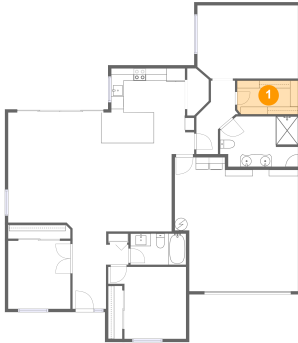
#	Room name	Dimensions	Area (sqft)	Counted as Living Area
1	W.i.c.	9'9" x 5'5"	52 sq. ft	Yes
2	Kitchen	14'1" x 13'8"	175 sq. ft	Yes
3	Garage	19'9" x 21'5"	376 sq. ft	No
4	Bath	12'6" x 8'1"	94 sq. ft	Yes
5	Bedroom	10'0" x 10'11"	109 sq. ft	Yes
6	Bath	8'11" x 5'0"	44 sq. ft	Yes
7	Bedroom	12'6" x 11'6"	121 sq. ft	Yes
8	Hall	5'9" x 11'9"	48 sq. ft	Yes
9	Primary Bedroom	16'1" x 11'8"	186 sq. ft	Yes
10	Dining Area	15'9" x 19'0"	285 sq. ft	Yes
11	Pantry	3'5" x 7'7"	22 sq. ft	Yes

1097 Roble Way, Siena Oaks, Palm Beach  
Gardens, Palm Beach County, Florida, United

#	Room name	Dimensions	Area (sqft)	Counted as Living Area
12	Foyer	8'11" x 12'4"	78 sq. ft	Yes
13	Living Room	10'6" x 12'4"	130 sq. ft	Yes
14	Porch	16'7" x 7'0"	117 sq. ft	No

# 1097 Roble Way, Siena Oaks, Palm Beach Gardens, Palm Beach County, Florida, United

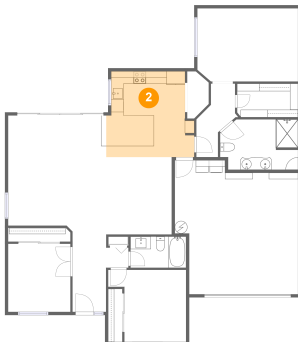
## 1 Floor 1 - W.i.c.



Dimensions: 9'9" x 5'5"  
Area: 52 sq. ft  
Counted as Living Area:  
Yes

Heated: Yes  
Finished: Yes  
Enclosed: Yes  
Contiguous:  
Yes  
Permitted: Yes  
Wet Space: No  
Addition: No  
Conversion: No

## 2 Floor 1 - Kitchen

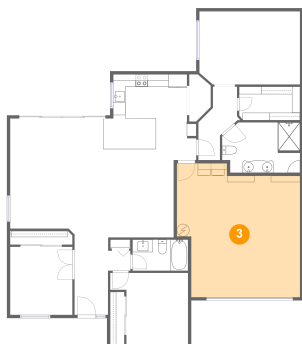


Dimensions: 14'1" x 13'8"  
Area: 175 sq. ft  
Counted as Living Area:  
Yes

Heated: Yes  
Finished: Yes  
Enclosed: Yes  
Contiguous:  
Yes  
Permitted: Yes  
Wet Space: No  
Addition: No  
Conversion: No

# 1097 Roble Way, Siena Oaks, Palm Beach Gardens, Palm Beach County, Florida, United

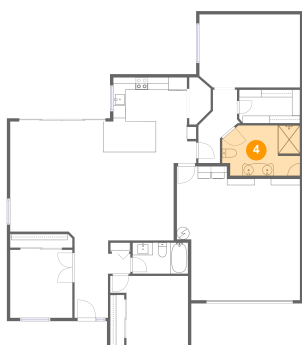
## 3 Floor 1 - Garage



Dimensions: 19'9" x 21'5"  
Area: 376 sq. ft  
Counted as Living Area: No

Heated: No  
Finished: No  
Enclosed: Yes  
Contiguous: Yes  
Permitted: Yes  
Wet Space: No  
Addition: No  
Conversion: No

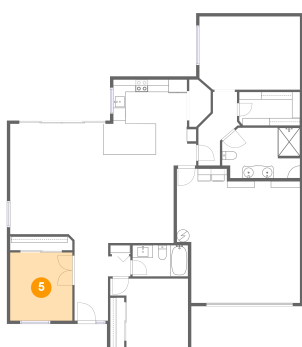
## 4 Floor 1 - Bath



Dimensions: 12'6" x 8'1"  
Area: 94 sq. ft  
Counted as Living Area: Yes

Heated: Yes  
Finished: Yes  
Enclosed: Yes  
Contiguous: Yes  
Permitted: Yes  
Wet Space: Yes  
Addition: No  
Conversion: No

## 5 Floor 1 - Bedroom

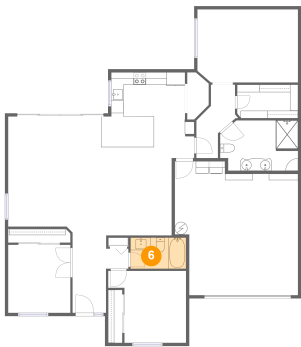


Dimensions: 10'0" x 10'11"  
Area: 109 sq. ft  
Counted as Living Area: Yes

Heated: Yes  
Finished: Yes  
Enclosed: Yes  
Contiguous: Yes  
Permitted: Yes  
Wet Space: No  
Addition: No  
Conversion: No

**1097 Roble Way, Siena Oaks, Palm Beach  
Gardens, Palm Beach County, Florida, United**

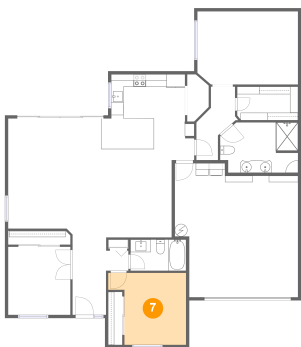
**6 Floor 1 - Bath**



Dimensions: 8'11" x 5'0"  
Area: 44 sq. ft  
Counted as Living Area:  
Yes

Heated: Yes  
Finished: Yes  
Enclosed: Yes  
Contiguous:  
Yes  
Permitted: Yes  
Wet Space: Yes  
Addition: No  
Conversion: No

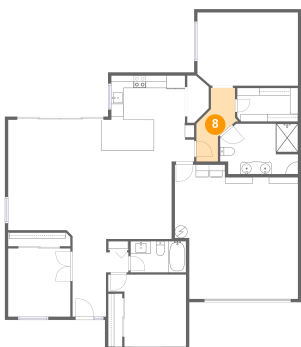
**7 Floor 1 - Bedroom**



Dimensions: 12'6" x 11'6"  
Area: 121 sq. ft  
Counted as Living Area:  
Yes

Heated: Yes  
Finished: Yes  
Enclosed: Yes  
Contiguous:  
Yes  
Permitted: Yes  
Wet Space: No  
Addition: No  
Conversion: No

**8 Floor 1 - Hall**

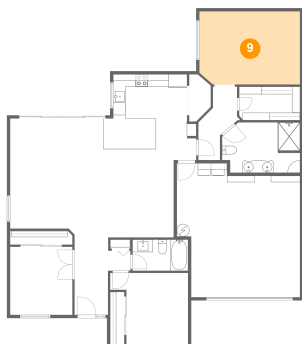


Dimensions: 5'9" x 11'9"  
Area: 48 sq. ft  
Counted as Living Area:  
Yes

Heated: Yes  
Finished: Yes  
Enclosed: Yes  
Contiguous:  
Yes  
Permitted: Yes  
Wet Space: No  
Addition: No  
Conversion: No

# 1097 Roble Way, Siena Oaks, Palm Beach Gardens, Palm Beach County, Florida, United

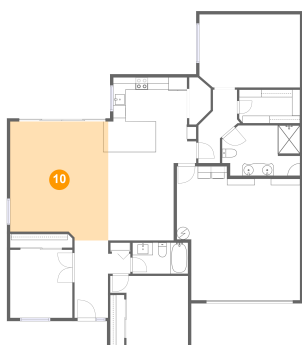
## 9 Floor 1 - Primary Bedroom



Dimensions: 16'1" x 11'8"  
Area: 186 sq. ft  
Counted as Living Area:  
Yes

Heated: Yes  
Finished: Yes  
Enclosed: Yes  
Contiguous:  
Yes  
Permitted: Yes  
Wet Space: No  
Addition: No  
Conversion: No

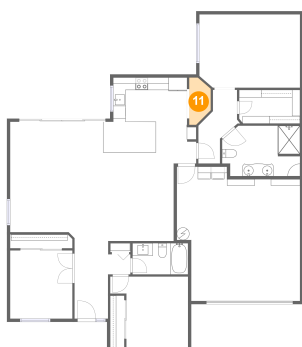
## 10 Floor 1 - Dining Area



Dimensions: 15'9" x 19'0"  
Area: 285 sq. ft  
Counted as Living Area:  
Yes

Heated: Yes  
Finished: Yes  
Enclosed: Yes  
Contiguous:  
Yes  
Permitted: Yes  
Wet Space: No  
Addition: No  
Conversion: No

## 11 Floor 1 - Pantry

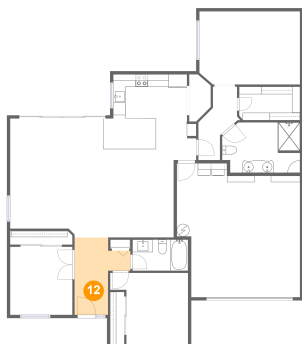


Dimensions: 3'5" x 7'7"  
Area: 22 sq. ft  
Counted as Living Area:  
Yes

Heated: Yes  
Finished: Yes  
Enclosed: Yes  
Contiguous:  
Yes  
Permitted: Yes  
Wet Space: No  
Addition: No  
Conversion: No

# 1097 Roble Way, Siena Oaks, Palm Beach Gardens, Palm Beach County, Florida, United

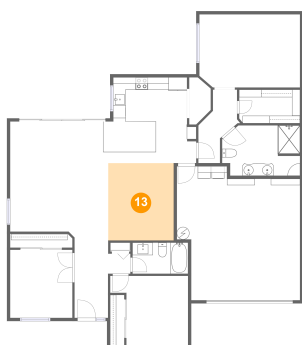
## 12 Floor 1 - Foyer



Dimensions: 8'11" x 12'4"  
Area: 78 sq. ft  
Counted as Living Area:  
Yes

Heated: Yes  
Finished: Yes  
Enclosed: Yes  
Contiguous:  
Yes  
Permitted: Yes  
Wet Space: No  
Addition: No  
Conversion: No

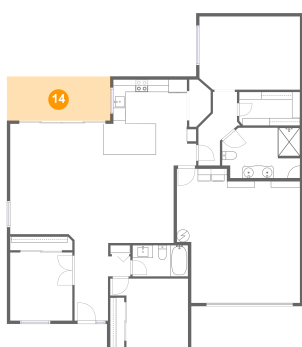
## 13 Floor 1 - Living Room



Dimensions: 10'6" x 12'4"  
Area: 130 sq. ft  
Counted as Living Area:  
Yes

Heated: Yes  
Finished: Yes  
Enclosed: Yes  
Contiguous:  
Yes  
Permitted: Yes  
Wet Space: No  
Addition: No  
Conversion: No

## 14 Floor 1 - Porch



Dimensions: 16'7" x 7'0"  
Area: 117 sq. ft  
Counted as Living Area: No

Heated: No  
Finished: Yes  
Enclosed: No  
Contiguous: Yes  
Permitted: Yes  
Wet Space: No  
Addition: No  
Conversion: No