

1122 North Middleton Drive Northwest, Calabash, Brunswick County, North Carolina, United States, 28467

Gross Living Area: 2960 sq. ft



Space	Area (sq. ft)	Calculation
FLOOR 1 (Living area)	2400	Coordinate Polygon Area Algorithm using inches $-((866.6 + 866.6) * (79.5 - 119.8) + (866.6 + 866.9) * (119.8 - 119.8) + (866.9 + 866.9) * (119.8 - 123.8) + (866.9 + 866.6) * (123.8 - 123.8) + (866.6 + 866.6) * (123.8 - 363.9) + (866.6 + 793.3) * (363.9 - 363.9) + (793.3 + 793.3) * (363.9 - 398.3) + (793.3 + 633.9) * (398.3 - 398.3) + (633.9 + 633.9) * (398.3 - 479.7) + (633.9 + 587) * (479.7 - 479.7) + (587 + 587) * (479.7 - 763.2) + (587 + 66) * (763.2 - 763.2) + (66 + 66) * (763.2 - 374.2) + (66 + 132) * (374.2 - 374.2) + (132 + 132) * (374.2 - 252.4) + (132 + 581) * (252.4 - 252.4) + (581 + 581) * (252.4 - 102.7) + (581 + 751) * (102.7 - 102.7) + (751 + 751) * (102.7 - 79.5) + (751 + 866.6) * (79.5 - 79.5)) * 0.5 * 0.00694$

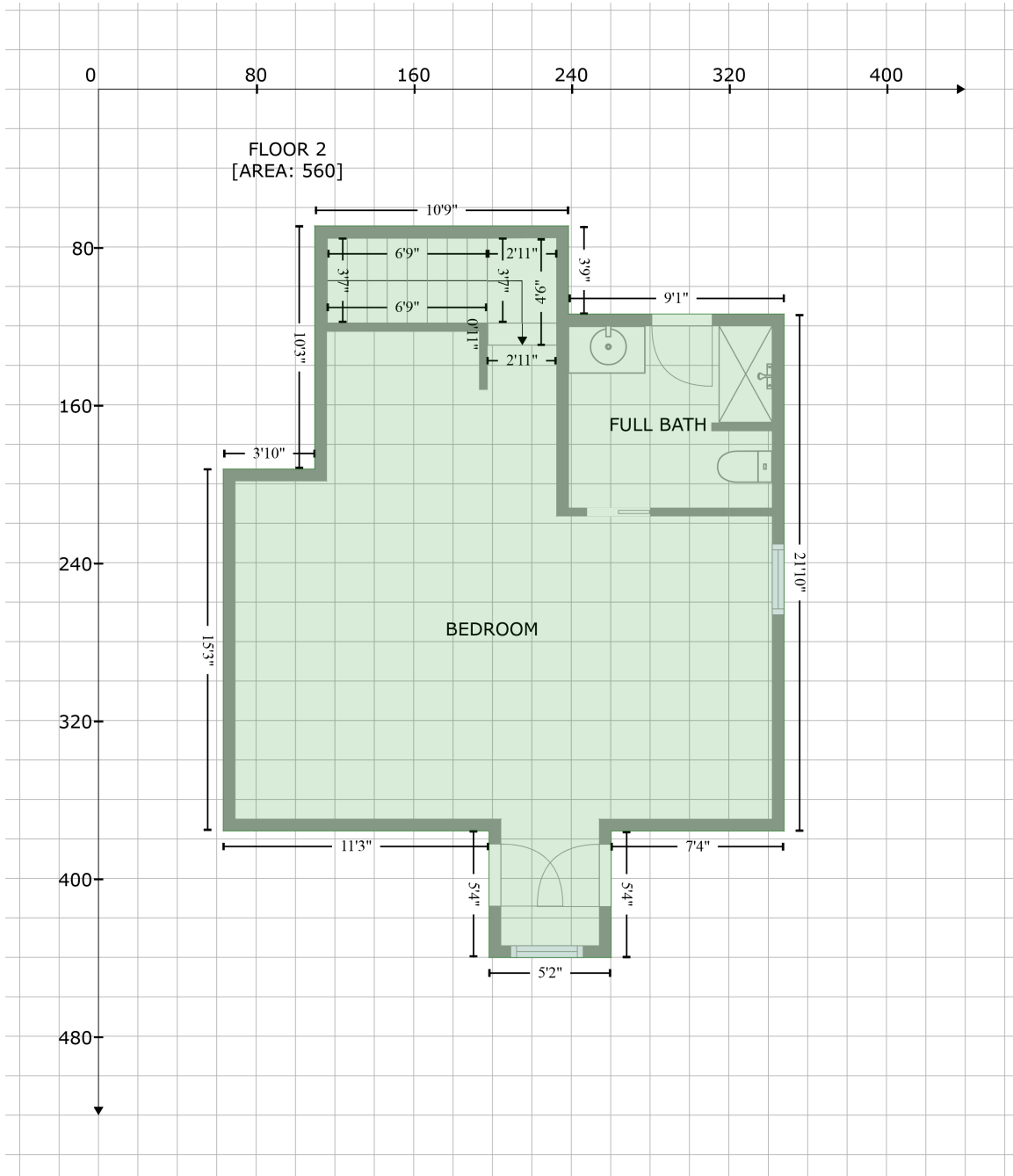
1122 North Middleton Drive Northwest, Calabash, Brunswick County, North Carolina, United States, 28467

Gross Living Area: 2960 sq. ft

Space	Area (sq. ft)	Calculation <small>Coordinate Polygon Area Algorithm using inches</small>
GARAGE (Non-living area)	699	$-\left((866.6 + 866.6) * (363.9 - 763.2) + (866.6 + 587) * (763.2 - 763.2) + (587 + 587) * (763.2 - 479.7) + (587 + 633.9) * (479.7 - 479.7) + (633.9 + 633.9) * (479.7 - 398.3) + (633.9 + 793.3) * (398.3 - 398.3) + (793.3 + 793.3) * (398.3 - 363.9) + (793.3 + 866.6) * (363.9 - 363.9)\right) * 0.5 * 0.00694$
PORCH (Non-living area)	177	$-\left((516.5 + 516.5) * (763.2 - 840.7) + (516.5 + 189.1) * (840.7 - 841) + (189.1 + 189.1) * (841 - 763.2) + (189.1 + 516.5) * (763.2 - 763.2)\right) * 0.5 * 0.00694$
PATIO (Non-living area)	333	$-\left((581 + 581) * (102.7 - 252.4) + (581 + 260.6) * (252.4 - 252.3) + (260.6 + 260.6) * (252.3 - 102.7) + (260.6 + 581) * (102.7 - 102.7)\right) * 0.5 * 0.00694$

1122 North Middleton Drive Northwest, Calabash, Brunswick County, North Carolina, United States, 28467

Gross Living Area: 2960 sq. ft



Space	Area (sq. ft)	Calculation <small>Coordinate Polygon Area Algorithm using inches</small>
FLOOR 2 (Living area)	560	$-((238.6 + 238.6) * (69.3 - 113.9) + (238.6 + 348.1) * (113.9 - 113.9) + (348.1 + 348.1) * (113.9 - 376) + (348.1 + 260.3) * (376 - 376) + (260.3 + 260.3) * (376 - 440.1) + (260.3 + 198.3) * (440.1 - 440.1) + (198.3 + 198.3) * (440.1 - 375.9) + (198.3 + 63.3) * (375.9 - 375.9) + (63.3 + 63.3) * (375.9 - 192.5) + (63.3 + 109.8) * (192.5 - 192.5) + (109.8 + 109.8) * (192.5 - 69.3) + (109.8 + 238.6) * (69.3 - 69.3)) * 0.5 * 0.00694$