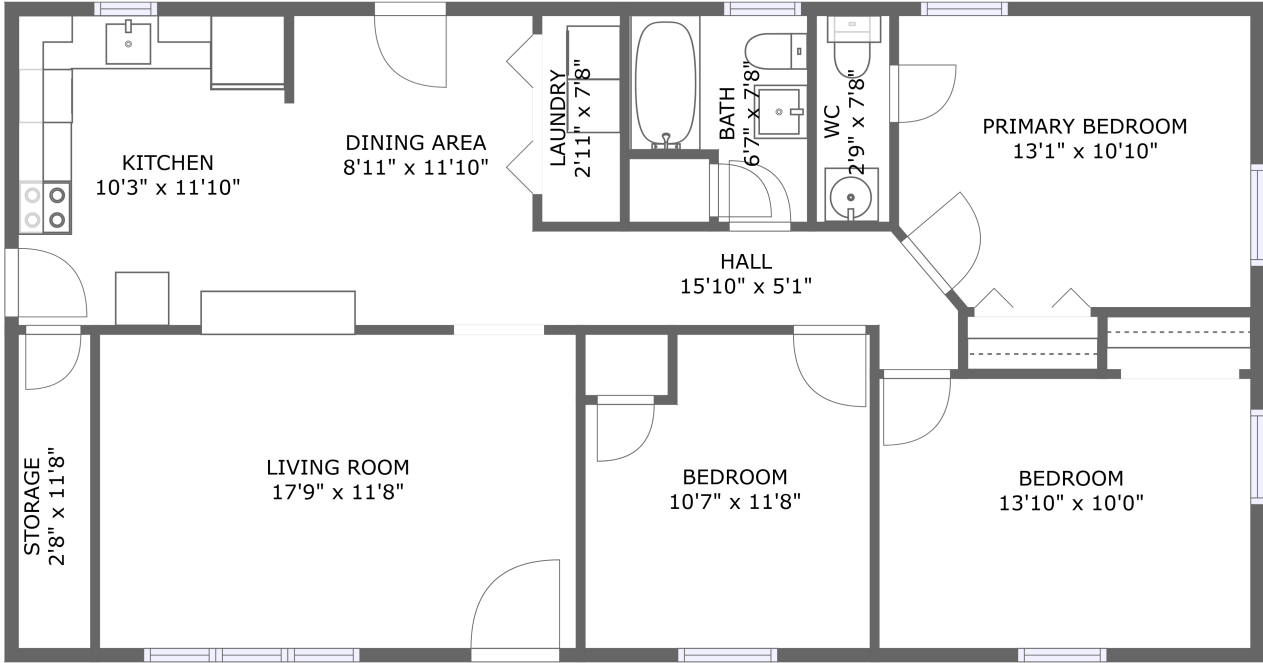


# 3595 Sweethome Road, Ashland City, Cheatham County, Tennessee, United States, 37015

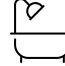



FLOOR 1

## Property Summary

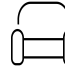
 **0** garages

 **3** bedrooms

 **1** bathrooms

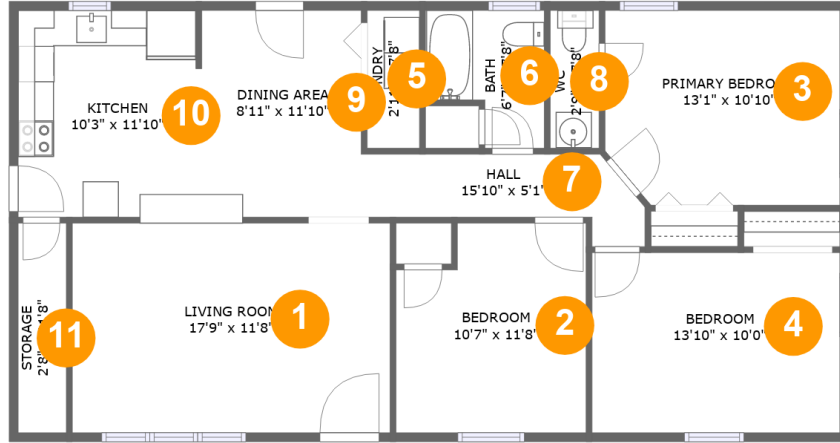
 **1** half baths

 **1** floors

 **1,126** Gross Living Area sqft

 **1,148** total sqft

# 3595 Sweethome Road, Ashland City, Cheatham County, Tennessee, United States, 37015



## Room Dimensions

Floor 1

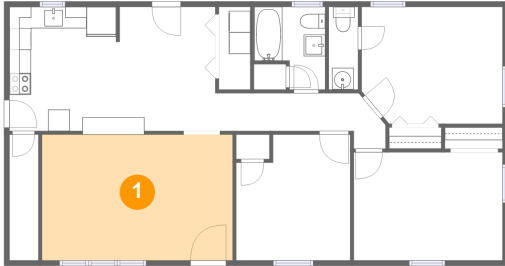
Total sqft: 1148

Living area: 1126

#	Room name	Dimensions	Area (sqft)	Counted as Living Area
1	Living Room	17'9" x 11'8"	207 sq. ft	Yes
2	Bedroom	10'7" x 11'8"	115 sq. ft	Yes
3	Primary Bedroom	13'1" x 10'10"	138 sq. ft	Yes
4	Bedroom	13'10" x 10'0"	139 sq. ft	Yes
5	Laundry	2'11" x 7'8"	22 sq. ft	Yes
6	Bath	6'7" x 7'8"	42 sq. ft	Yes
7	Hall	15'10" x 5'1"	57 sq. ft	Yes
8	Wc	2'9" x 7'8"	21 sq. ft	Yes
9	Dining Area	8'11" x 11'10"	103 sq. ft	Yes
10	Kitchen	10'3" x 11'10"	118 sq. ft	Yes
11	Storage	2'8" x 11'8"	31 sq. ft	Yes

# 3595 Sweethome Road, Ashland City, Cheatham County, Tennessee, United States, 37015

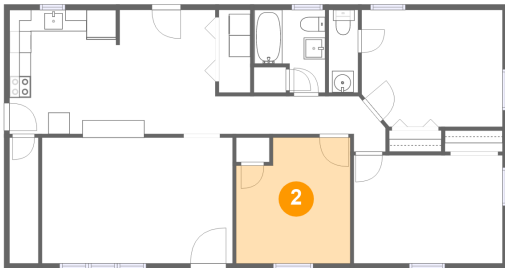
## 1 Floor 1 - Living Room



Dimensions: 17'9" x 11'8"  
Area: 207 sq. ft  
Counted as Living Area:  
Yes

Heated: Yes  
Finished: Yes  
Enclosed: Yes  
Contiguous:  
Yes  
Permitted: Yes  
Wet Space: No  
Addition: No  
Conversion: No

## 2 Floor 1 - Bedroom

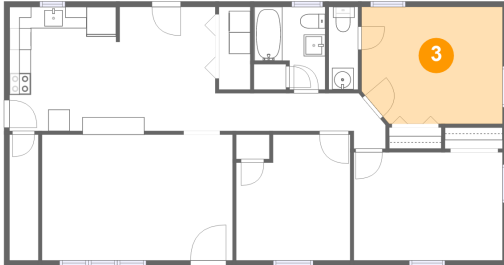


Dimensions: 10'7" x 11'8"  
Area: 115 sq. ft  
Counted as Living Area:  
Yes

Heated: Yes  
Finished: Yes  
Enclosed: Yes  
Contiguous:  
Yes  
Permitted: Yes  
Wet Space: No  
Addition: No  
Conversion: No

# 3595 Sweethome Road, Ashland City, Cheatham County, Tennessee, United States, 37015

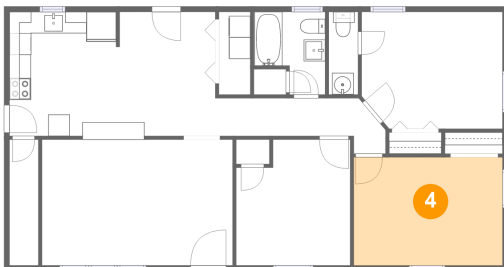
## 3 Floor 1 - Primary Bedroom



Dimensions: 13'1" x 10'10"  
Area: 138 sq. ft  
Counted as Living Area:  
Yes

Heated: Yes  
Finished: Yes  
Enclosed: Yes  
Contiguous:  
Yes  
Permitted: Yes  
Wet Space: No  
Addition: No  
Conversion: No

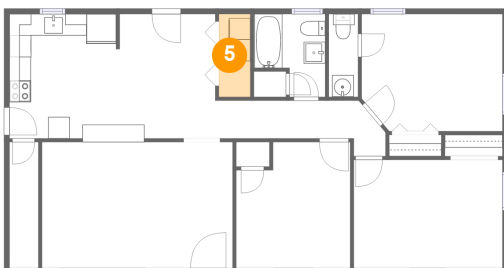
## 4 Floor 1 - Bedroom



Dimensions: 13'10" x 10'0"  
Area: 139 sq. ft  
Counted as Living Area:  
Yes

Heated: Yes  
Finished: Yes  
Enclosed: Yes  
Contiguous:  
Yes  
Permitted: Yes  
Wet Space: No  
Addition: No  
Conversion: No

## 5 Floor 1 - Laundry

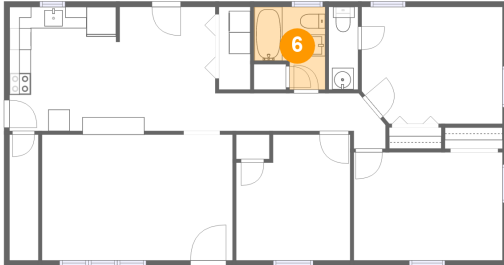


Dimensions: 2'11" x 7'8"  
Area: 22 sq. ft  
Counted as Living Area:  
Yes

Heated: Yes  
Finished: Yes  
Enclosed: Yes  
Contiguous:  
Yes  
Permitted: Yes  
Wet Space: No  
Addition: No  
Conversion: No

# 3595 Sweethome Road, Ashland City, Cheatham County, Tennessee, United States, 37015

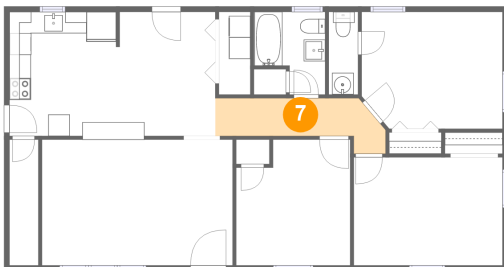
## 6 Floor 1 - Bath



Dimensions: 6'7" x 7'8"  
Area: 42 sq. ft  
Counted as Living Area:  
Yes

Heated: Yes  
Finished: Yes  
Enclosed: Yes  
Contiguous:  
Yes  
Permitted: Yes  
Wet Space: Yes  
Addition: No  
Conversion: No

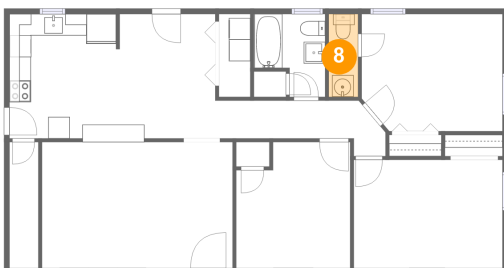
## 7 Floor 1 - Hall



Dimensions: 15'10" x 5'1"  
Area: 57 sq. ft  
Counted as Living Area:  
Yes

Heated: Yes  
Finished: Yes  
Enclosed: Yes  
Contiguous:  
Yes  
Permitted: Yes  
Wet Space: No  
Addition: No  
Conversion: No

## 8 Floor 1 - Wc



Dimensions: 2'9" x 7'8"  
Area: 21 sq. ft  
Counted as Living Area:  
Yes

Heated: Yes  
Finished: Yes  
Enclosed: Yes  
Contiguous:  
Yes  
Permitted: Yes  
Wet Space: Yes  
Addition: No  
Conversion: No

# 3595 Sweethome Road, Ashland City, Cheatham County, Tennessee, United States, 37015

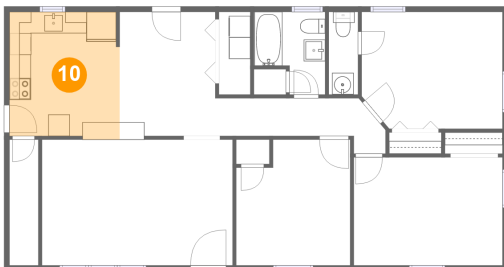
## 9 Floor 1 - Dining Area



Dimensions: 8'11" x 11'10"  
Area: 103 sq. ft  
Counted as Living Area:  
Yes

Heated: Yes  
Finished: Yes  
Enclosed: Yes  
Contiguous:  
Yes  
Permitted: Yes  
Wet Space: No  
Addition: No  
Conversion: No

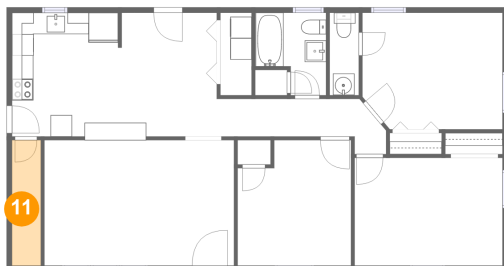
## 10 Floor 1 - Kitchen



Dimensions: 10'3" x 11'10"  
Area: 118 sq. ft  
Counted as Living Area:  
Yes

Heated: Yes  
Finished: Yes  
Enclosed: Yes  
Contiguous:  
Yes  
Permitted: Yes  
Wet Space: No  
Addition: No  
Conversion: No

## 11 Floor 1 - Storage



Dimensions: 2'8" x 11'8"  
Area: 31 sq. ft  
Counted as Living Area:  
Yes

Heated: Yes  
Finished: Yes  
Enclosed: Yes  
Contiguous:  
Yes  
Permitted: Yes  
Wet Space: No  
Addition: No  
Conversion: No