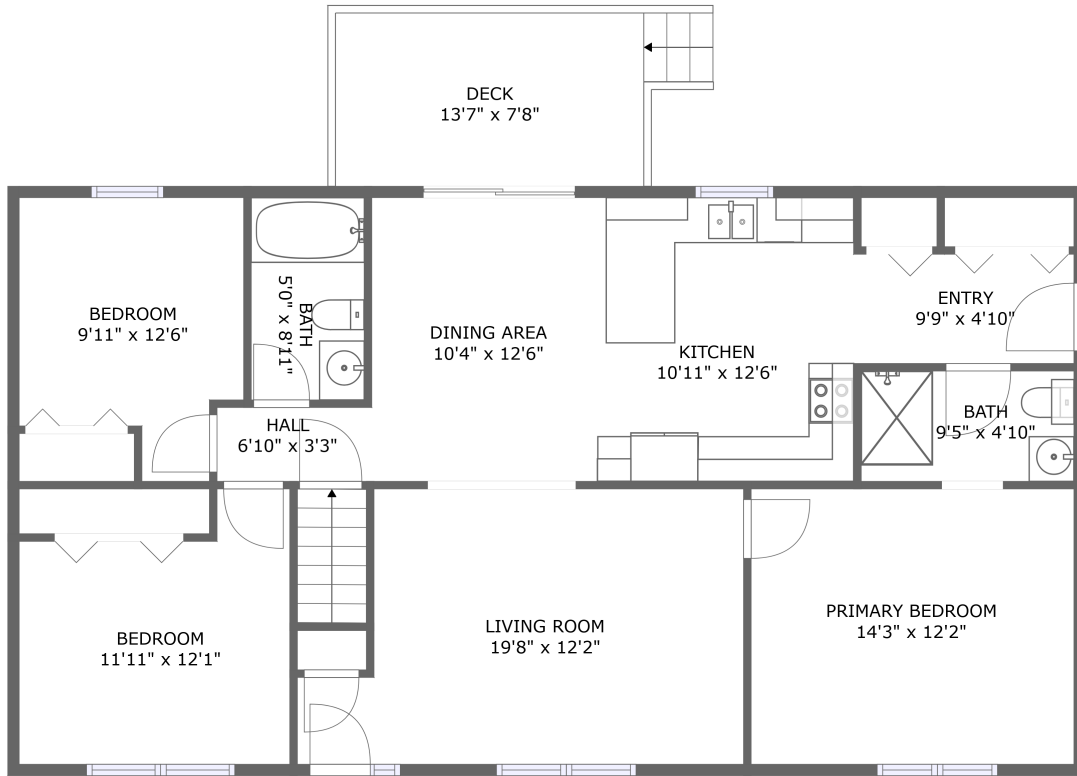


Home Data Report

**60 Valentine Drive, Enosburg Falls, Franklin
County, Vermont, United States, 05450**



FLOOR 1

Property Summary



1 floors



3 bedrooms



2 bathrooms



1,359 total sqft



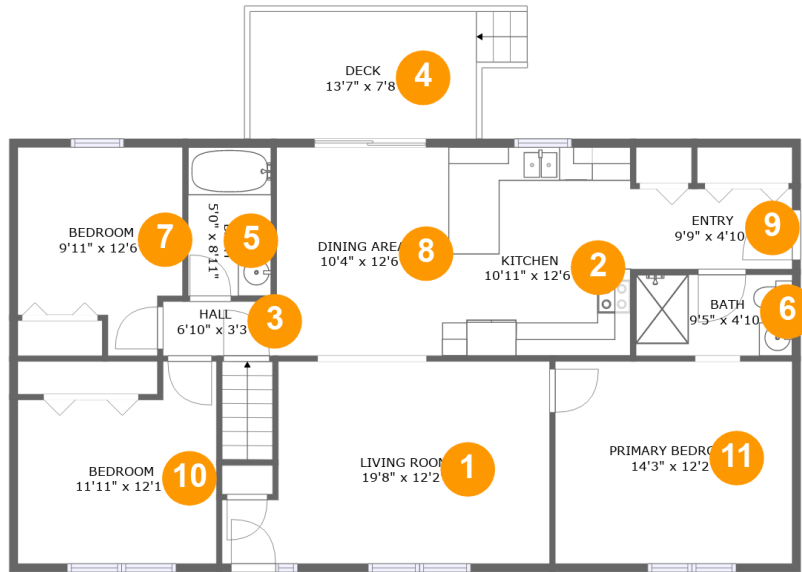
0 garages



1,235 Gross Living Area sqft

Home Data Report

60 Valentine Drive, Enosburg Falls, Franklin County, Vermont, United States, 05450



Room Dimensions

Floor 1

Total sqft: 1359

Living area: 1235

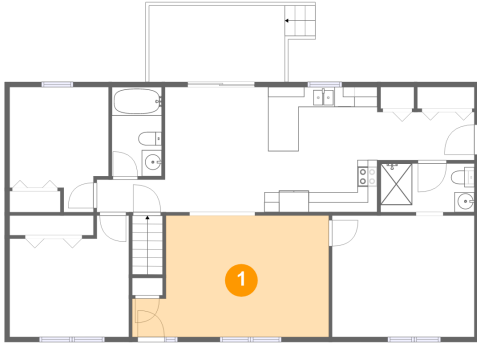
#	Room name	Dimensions	Area (sqft)	Counted as Living Area
1	Living Room	19'8" x 12'2"	211 sq. ft	Yes
2	Kitchen	10'11" x 12'6"	137 sq. ft	Yes
3	Hall	6'10" x 3'3"	22 sq. ft	Yes
4	Deck	13'7" x 7'8"	124 sq. ft	No
5	Bath	5'0" x 8'11"	44 sq. ft	Yes
6	Bath	9'5" x 4'10"	46 sq. ft	Yes
7	Bedroom	9'11" x 12'6"	105 sq. ft	Yes
8	Dining Area	10'4" x 12'6"	129 sq. ft	Yes
9	Entry	9'9" x 4'10"	47 sq. ft	Yes
10	Bedroom	11'11" x 12'1"	125 sq. ft	Yes
11	Primary Bedroom	14'3" x 12'2"	173 sq. ft	Yes

Scan captured on Fri, 31 May 2024 17:33:46 GMT

Information is calculated by technology; deemed highly reliable but not guaranteed.

60 Valentine Drive, Enosburg Falls, Franklin County, Vermont, United States, 05450

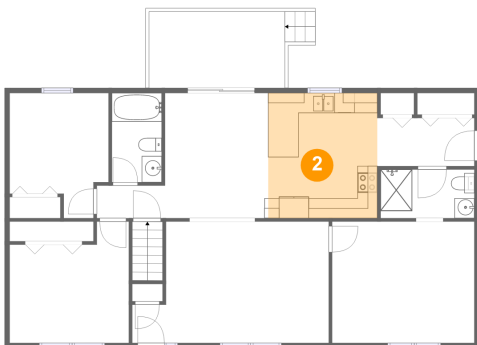
1 Floor 1 - Living Room



Dimensions: 19'8" x 12'2"
Area: 211 sq. ft
Counted as Living Area:
Yes

Heated: Yes
Finished: Yes
Enclosed: Yes
Contiguous:
Yes
Permitted: Yes
Wet Space: No
Addition: No
Conversion: No

2 Floor 1 - Kitchen

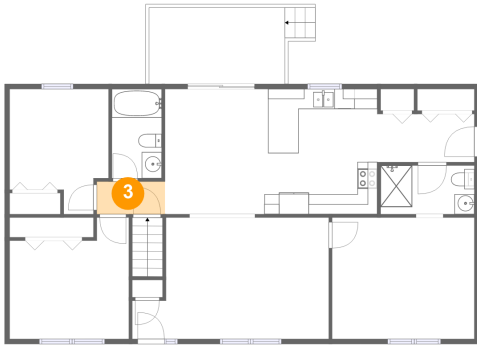


Dimensions: 10'11" x 12'6"
Area: 137 sq. ft
Counted as Living Area:
Yes

Heated: Yes
Finished: Yes
Enclosed: Yes
Contiguous:
Yes
Permitted: Yes
Wet Space: No
Addition: No
Conversion: No

**60 Valentine Drive, Enosburg Falls, Franklin
County, Vermont, United States, 05450**

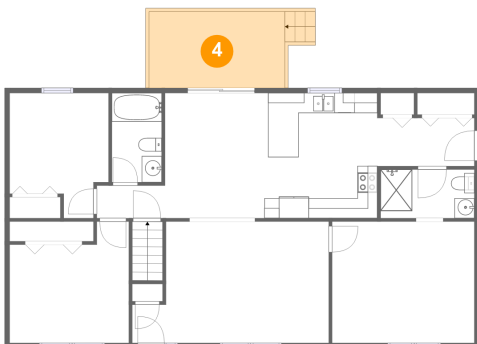
3 Floor 1 - Hall



Dimensions: 6'10" x 3'3"
Area: 22 sq. ft
Counted as Living Area:
Yes

Heated: Yes
Finished: Yes
Enclosed: Yes
Contiguous:
Yes
Permitted: Yes
Wet Space: No
Addition: No
Conversion: No

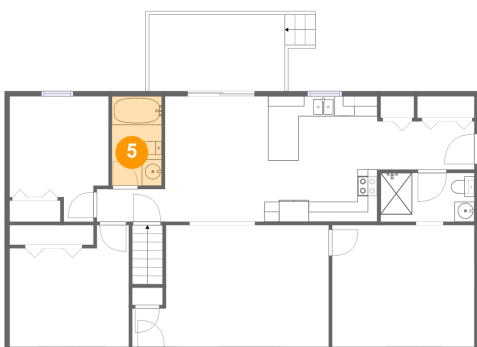
4 Floor 1 - Deck



Dimensions: 13'7" x 7'8"
Area: 124 sq. ft
Counted as Living Area: No

Heated: No
Finished: Yes
Enclosed: No
Contiguous: Yes
Permitted: Yes
Wet Space: No
Addition: No
Conversion: No

5 Floor 1 - Bath

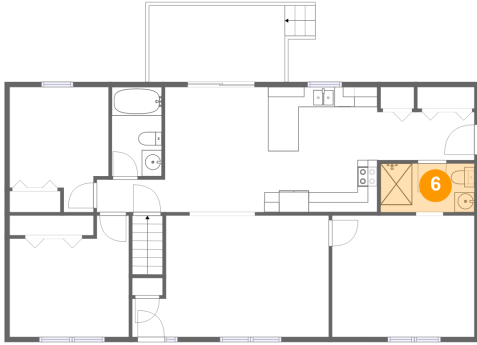


Dimensions: 5'0" x 8'11"
Area: 44 sq. ft
Counted as Living Area:
Yes

Heated: Yes
Finished: Yes
Enclosed: Yes
Contiguous:
Yes
Permitted: Yes
Wet Space: Yes
Addition: No
Conversion: No

60 Valentine Drive, Enosburg Falls, Franklin County, Vermont, United States, 05450

6 Floor 1 - Bath



Dimensions: 9'5" x 4'10"
Area: 46 sq. ft
Counted as Living Area:
Yes

Heated: Yes
Finished: Yes
Enclosed: Yes
Contiguous:
Yes
Permitted: Yes
Wet Space: Yes
Addition: No
Conversion: No

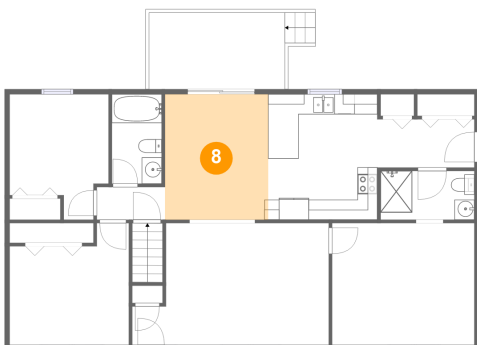
7 Floor 1 - Bedroom



Dimensions: 9'11" x 12'6"
Area: 105 sq. ft
Counted as Living Area:
Yes

Heated: Yes
Finished: Yes
Enclosed: Yes
Contiguous:
Yes
Permitted: Yes
Wet Space: No
Addition: No
Conversion: No

8 Floor 1 - Dining Area

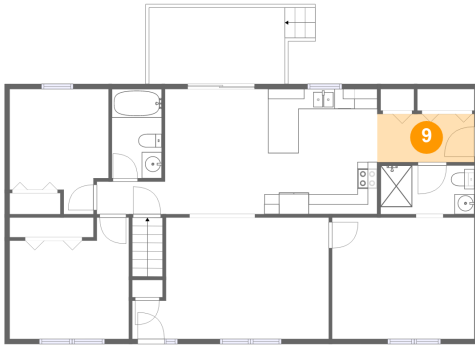


Dimensions: 10'4" x 12'6"
Area: 129 sq. ft
Counted as Living Area:
Yes

Heated: Yes
Finished: Yes
Enclosed: Yes
Contiguous:
Yes
Permitted: Yes
Wet Space: No
Addition: No
Conversion: No

60 Valentine Drive, Enosburg Falls, Franklin County, Vermont, United States, 05450

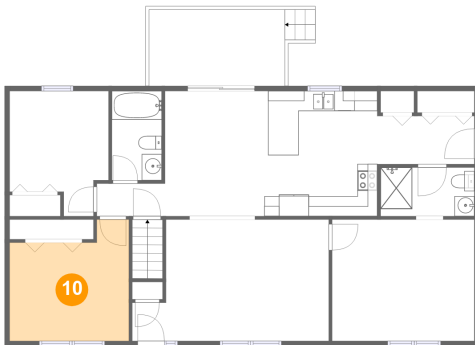
9 Floor 1 - Entry



Dimensions: 9'9" x 4'10"
Area: 47 sq. ft
Counted as Living Area:
Yes

Heated: Yes
Finished: Yes
Enclosed: Yes
Contiguous:
Yes
Permitted: Yes
Wet Space: No
Addition: No
Conversion: No

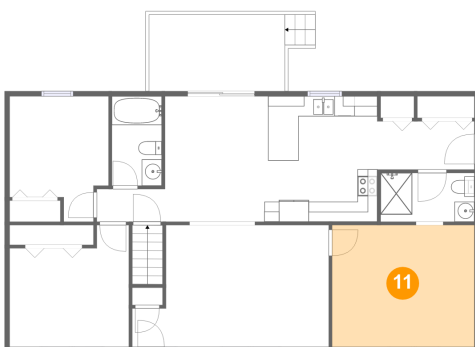
10 Floor 1 - Bedroom



Dimensions: 11'11" x 12'1"
Area: 125 sq. ft
Counted as Living Area:
Yes

Heated: Yes
Finished: Yes
Enclosed: Yes
Contiguous:
Yes
Permitted: Yes
Wet Space: No
Addition: No
Conversion: No

11 Floor 1 - Primary Bedroom



Dimensions: 14'3" x 12'2"
Area: 173 sq. ft
Counted as Living Area:
Yes

Heated: Yes
Finished: Yes
Enclosed: Yes
Contiguous:
Yes
Permitted: Yes
Wet Space: No
Addition: No
Conversion: No