

TOTAL Sketch by a la mode

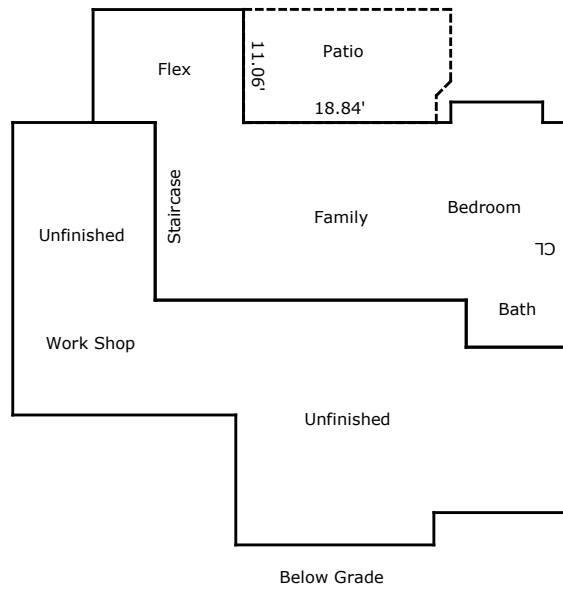
**Area Calculations Summary**

**Living Area**

Main Level	2066.13 Sq ft
Second Level	1136.47 Sq ft
<b>Total Living Area (Rounded):</b>	<b>3203 Sq ft</b>

**Non-living Area**

Screened Porch	194.99 Sq ft
Patio	92.9 Sq ft
Porch	122.92 Sq ft
Garage	593.94 Sq ft
Attic	280.19 Sq ft



TOTAL Sketch by a la mode

**Area Calculations Summary**

<b>Living Area</b>	
Below Grade	1179.31 Sq ft
<b>Total Living Area (Rounded):</b>	<b>1179 Sq ft</b>
<b>Non-living Area</b>	
Patio	219.22 Sq ft
Below Grade	930.95 Sq ft

## Area Calculations Summary

Living Area		Calculation Details	
Main Level	2066.13 Sq ft	$14.71 \times 11.06 = 162.69$ $8.8 \times 1.99 = 17.51$ $30.73 \times 22.84 = 701.87$ $32.35 \times 35 = 1132.25$ $14.8 \times 3.5 = 51.8$	
Second Level	1136.47 Sq ft	$7.68 \times 7.89 = 60.6$ $4.44 \times 5.71 = 25.35$ $13.83 \times 23.17 = 320.44$ $11.45 \times 5.91 = 67.67$ $16.46 \times 12.79 = 210.52$ $12.36 \times 1.26 = 15.57$ $14.76 \times 1.43 = 21.11$ $20.01 \times 1.06 = 21.21$ $20.51 \times 19.13 = 392.36$ $0.5 \times 20.51 \times 0.16 = 1.64$	
Below Grade	1179.31 Sq ft	$13.94 \times 17.36 = 242$ $16.18 \times 10.14 = 164.07$ $11.23 \times 21.82 = 245.04$ $22.52 \times 20.75 = 467.29$ $19.34 \times 3.15 = 60.92$	
<b>Total Living Area (Rounded):</b>	<b>4382 Sq ft</b>		
<b>Non-living Area</b>			
Screened Porch	194.99 Sq ft	$17.63 \times 11.06 = 194.99$	
Patio	92.9 Sq ft	$11.06 \times 8.4 = 92.9$	
Porch	122.92 Sq ft	$3.32 \times 2 = 6.64$ $6.82 \times 17.05 = 116.28$	
Garage	593.94 Sq ft	$24.47 \times 11.23 = 274.8$ $12.11 \times 22.26 = 269.57$ $4.27 \times 11.61 = 49.57$	
Attic	280.19 Sq ft	$4.4 \times 8.7 = 38.28$ $14.18 \times 17.06 = 241.91$	
Patio	219.22 Sq ft	$11.06 \times 18.84 = 208.32$ $1.41 \times 7 = 9.9$ $0.5 \times 1.41 \times 1.41 = 1$	
Below Grade	930.95 Sq ft	$14.71 \times 11.06 = 162.69$ $8.98 \times 2.02 = 18.14$ $17.36 \times 30.4 = 527.74$ $10.14 \times 21.93 = 222.37$	