

7580 Mount Chestnut Road, Roanoke, Roanoke County, Virginia, United States, 24018




Property Summary

 **0** garages

 **3** bedrooms

 **2** bathrooms

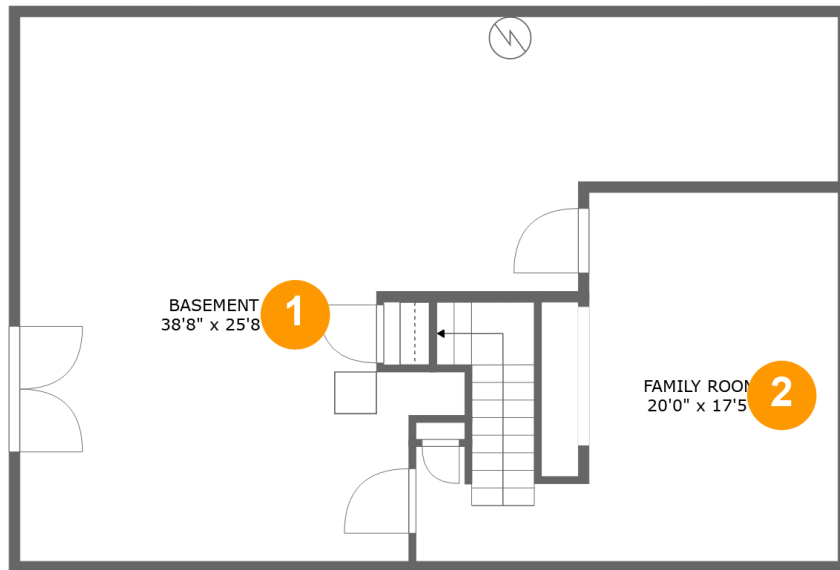
 **1** half baths

 **3** floors

 **2,542** Gross Living Area sqft

 **3,747** total sqft

7580 Mount Chestnut Road, Roanoke, Roanoke County, Virginia, United States, 24018



Room Dimensions

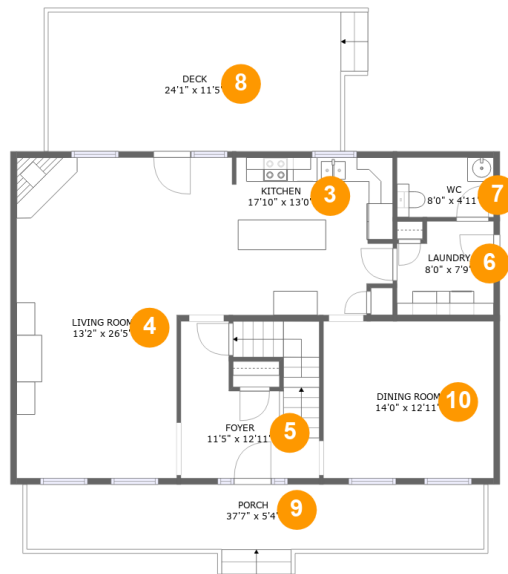
Floor 1

Total sqft: 1060

Living area: 332

#	Room name	Dimensions	Area (sqft)	Counted as Living Area
1	Basement	38'8" x 25'8"	672 sq. ft	No
2	Family Room	20'0" x 17'5"	270 sq. ft	Yes

7580 Mount Chestnut Road, Roanoke, Roanoke County, Virginia, United States, 24018



Room Dimensions

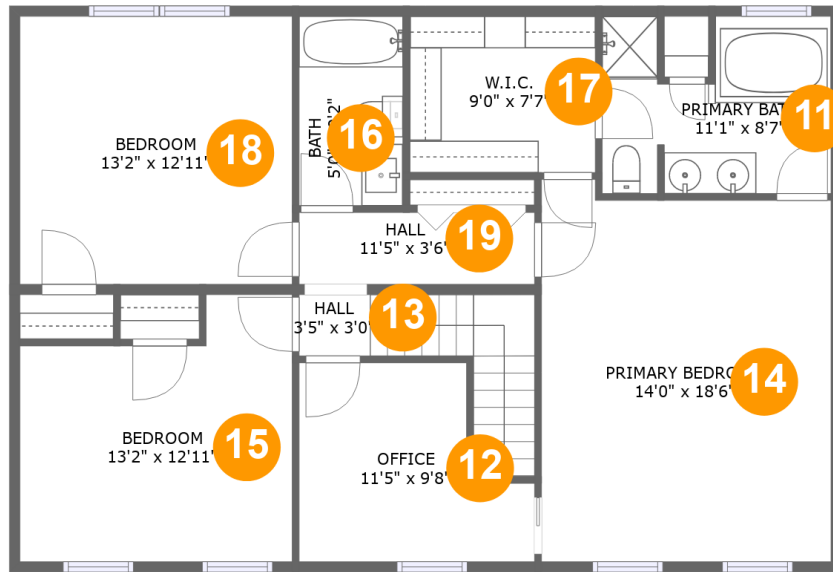
Floor 2

Total sqft: 1582

Living area: 1105

#	Room name	Dimensions	Area (sqft)	Counted as Living Area
3	Kitchen	17'10" x 13'0"	224 sq. ft	Yes
4	Living Room	13'2" x 26'5"	349 sq. ft	Yes
5	Foyer	11'5" x 12'11"	134 sq. ft	Yes
6	Laundry	8'0" x 7'9"	57 sq. ft	Yes
7	Wc	8'0" x 4'11"	39 sq. ft	Yes
8	Deck	24'1" x 11'5"	276 sq. ft	No
9	Porch	37'7" x 5'4"	201 sq. ft	No
10	Dining Room	14'0" x 12'11"	181 sq. ft	Yes

7580 Mount Chestnut Road, Roanoke, Roanoke County, Virginia, United States, 24018



Room Dimensions

Floor 3

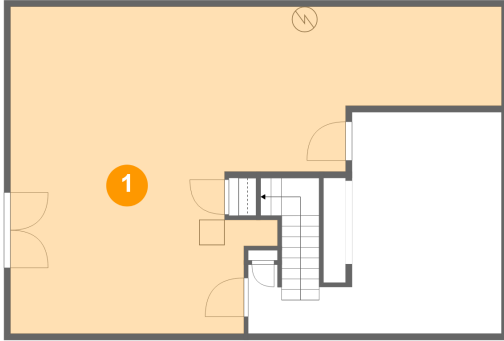
Total sqft: 1105

Living area: 1105

#	Room name	Dimensions	Area (sqft)	Counted as Living Area
11	Primary Bath	11'1" x 8'7"	85 sq. ft	Yes
12	Office	11'5" x 9'8"	91 sq. ft	Yes
13	Hall	3'5" x 3'0"	51 sq. ft	Yes
14	Primary Bedroom	14'0" x 18'6"	248 sq. ft	Yes
15	Bedroom	13'2" x 12'11"	148 sq. ft	Yes
16	Bath	5'0" x 9'2"	46 sq. ft	Yes
17	W.i.c.	9'0" x 7'7"	68 sq. ft	Yes
18	Bedroom	13'2" x 12'11"	171 sq. ft	Yes
19	Hall	11'5" x 3'6"	40 sq. ft	Yes

7580 Mount Chestnut Road, Roanoke, Roanoke County, Virginia, United States, 24018

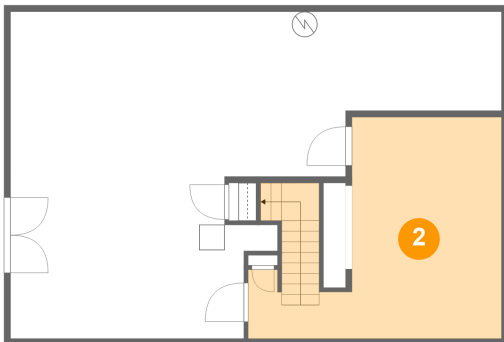
1 Floor 1 - Basement



Dimensions: 38'8" x 25'8"
Area: 672 sq. ft
Counted as Living Area: No

Heated: Yes
Finished: No
Enclosed: Yes
Contiguous: Yes
Permitted: Yes
Wet Space: No
Addition: No
Conversion: No

2 Floor 1 - Family Room

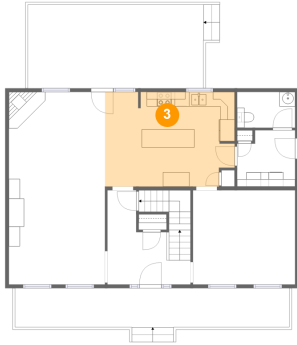


Dimensions: 20'0" x 17'5"
Area: 270 sq. ft
Counted as Living Area: Yes

Heated: Yes
Finished: Yes
Enclosed: Yes
Contiguous: Yes
Permitted: Yes
Wet Space: No
Addition: No
Conversion: No

7580 Mount Chestnut Road, Roanoke, Roanoke County, Virginia, United States, 24018

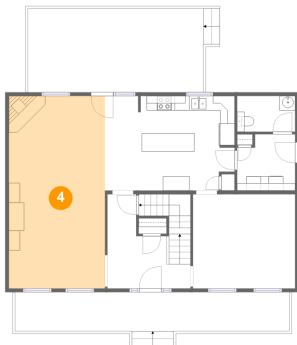
3 Floor 2 - Kitchen



Dimensions: 17'10" x 13'0"
Area: 224 sq. ft
Counted as Living Area:
Yes

Heated: Yes
Finished: Yes
Enclosed: Yes
Contiguous:
Yes
Permitted: Yes
Wet Space: No
Addition: No
Conversion: No

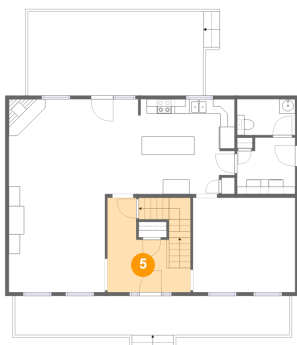
4 Floor 2 - Living Room



Dimensions: 13'2" x 26'5"
Area: 349 sq. ft
Counted as Living Area:
Yes

Heated: Yes
Finished: Yes
Enclosed: Yes
Contiguous:
Yes
Permitted: Yes
Wet Space: No
Addition: No
Conversion: No

5 Floor 2 - Foyer

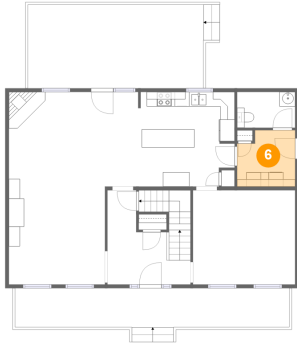


Dimensions: 11'5" x 12'11"
Area: 134 sq. ft
Counted as Living Area:
Yes

Heated: Yes
Finished: Yes
Enclosed: Yes
Contiguous:
Yes
Permitted: Yes
Wet Space: No
Addition: No
Conversion: No

7580 Mount Chestnut Road, Roanoke, Roanoke County, Virginia, United States, 24018

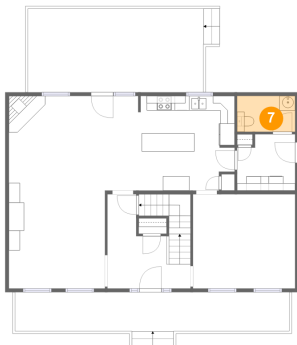
6 Floor 2 - Laundry



Dimensions: 8'0" x 7'9"
Area: 57 sq. ft
Counted as Living Area:
Yes

Heated: Yes
Finished: Yes
Enclosed: Yes
Contiguous:
Yes
Permitted: Yes
Wet Space: No
Addition: No
Conversion: No

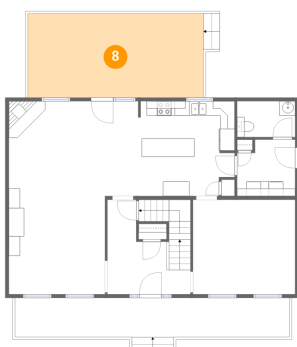
7 Floor 2 - Wc



Dimensions: 8'0" x 4'11"
Area: 39 sq. ft
Counted as Living Area:
Yes

Heated: Yes
Finished: Yes
Enclosed: Yes
Contiguous:
Yes
Permitted: Yes
Wet Space: Yes
Addition: No
Conversion: No

8 Floor 2 - Deck

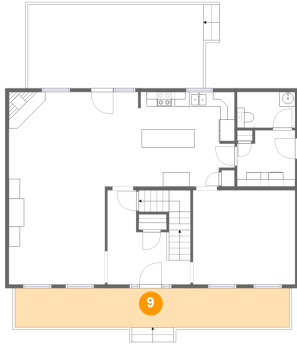


Dimensions: 24'1" x 11'5"
Area: 276 sq. ft
Counted as Living Area: No

Heated: No
Finished: Yes
Enclosed: No
Contiguous: Yes
Permitted: Yes
Wet Space: No
Addition: No
Conversion: No

7580 Mount Chestnut Road, Roanoke, Roanoke County, Virginia, United States, 24018

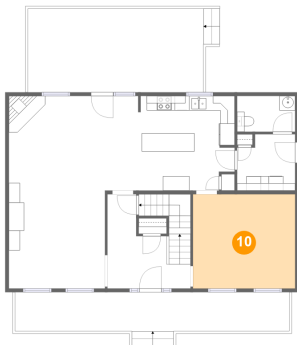
9 Floor 2 - Porch



Dimensions: 37'7" x 5'4"
Area: 201 sq. ft
Counted as Living Area: No

Heated: No
Finished: Yes
Enclosed: No
Contiguous: Yes
Permitted: Yes
Wet Space: No
Addition: No
Conversion: No

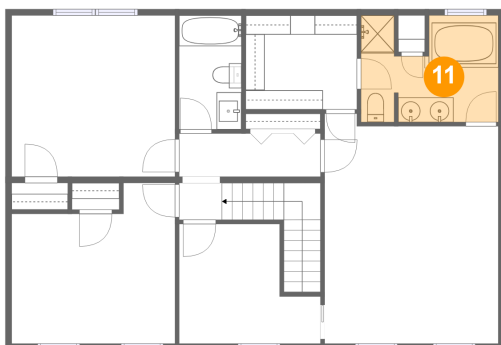
10 Floor 2 - Dining Room



Dimensions: 14'0" x 12'11"
Area: 181 sq. ft
Counted as Living Area: Yes

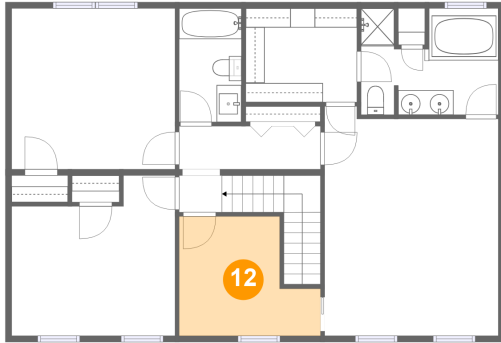
Heated: Yes
Finished: Yes
Enclosed: Yes
Contiguous: Yes
Permitted: Yes
Wet Space: No
Addition: No
Conversion: No

11 Floor 3 - Primary Bath



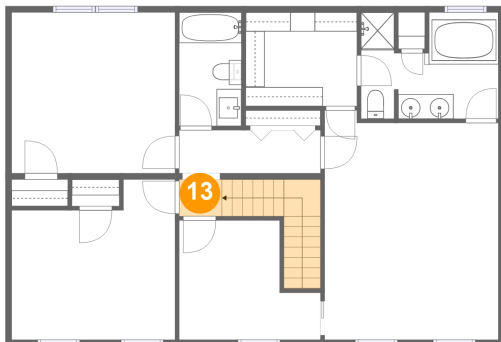
Dimensions: 11'1" x 8'7"
Area: 85 sq. ft
Counted as Living Area: Yes

Heated: Yes
Finished: Yes
Enclosed: Yes
Contiguous: Yes
Permitted: Yes
Wet Space: Yes
Addition: No
Conversion: No

**7580 Mount Chestnut Road, Roanoke, Roanoke
County, Virginia, United States, 24018****12 Floor 3 - Office**

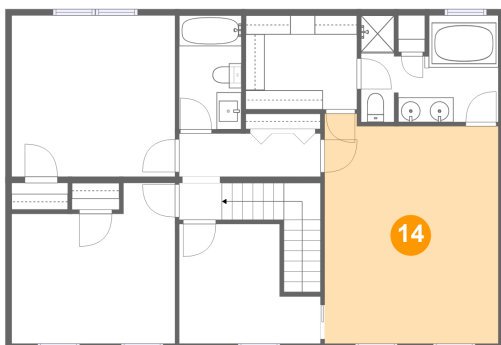
Dimensions: 11'5" x 9'8"
Area: 91 sq. ft
Counted as Living Area:
Yes

Heated: Yes
Finished: Yes
Enclosed: Yes
Contiguous:
Yes
Permitted: Yes
Wet Space: No
Addition: No
Conversion: No

13 Floor 3 - Hall

Dimensions: 3'5" x 3'0"
Area: 51 sq. ft
Counted as Living Area:
Yes

Heated: Yes
Finished: Yes
Enclosed: Yes
Contiguous:
Yes
Permitted: Yes
Wet Space: No
Addition: No
Conversion: No

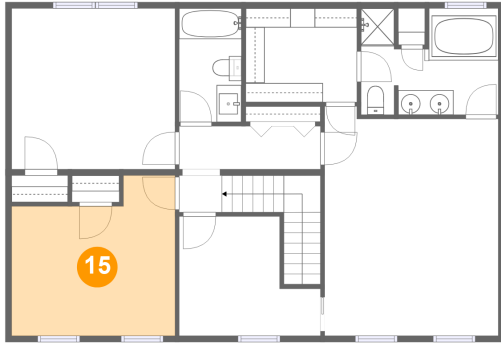
14 Floor 3 - Primary Bedroom

Dimensions: 14'0" x 18'6"
Area: 248 sq. ft
Counted as Living Area:
Yes

Heated: Yes
Finished: Yes
Enclosed: Yes
Contiguous:
Yes
Permitted: Yes
Wet Space: No
Addition: No
Conversion: No

7580 Mount Chestnut Road, Roanoke, Roanoke County, Virginia, United States, 24018

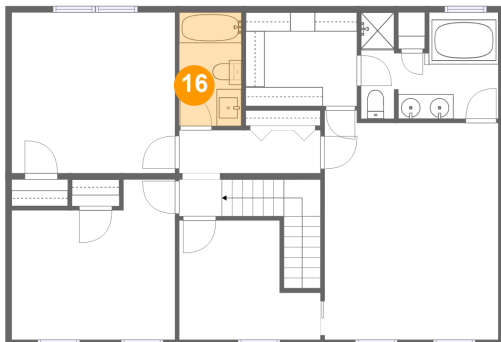
15 Floor 3 - Bedroom



Dimensions: 13'2" x 12'11"
Area: 148 sq. ft
Counted as Living Area:
Yes

Heated: Yes
Finished: Yes
Enclosed: Yes
Contiguous:
Yes
Permitted: Yes
Wet Space: No
Addition: No
Conversion: No

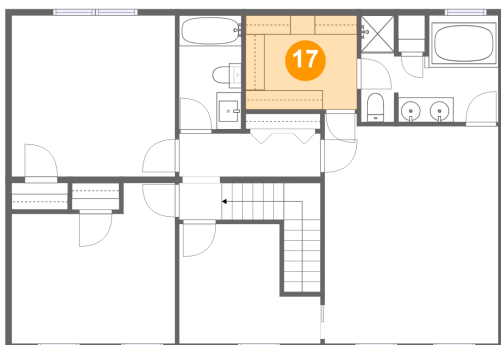
16 Floor 3 - Bath



Dimensions: 5'0" x 9'2"
Area: 46 sq. ft
Counted as Living Area:
Yes

Heated: Yes
Finished: Yes
Enclosed: Yes
Contiguous:
Yes
Permitted: Yes
Wet Space: Yes
Addition: No
Conversion: No

17 Floor 3 - W.i.c.

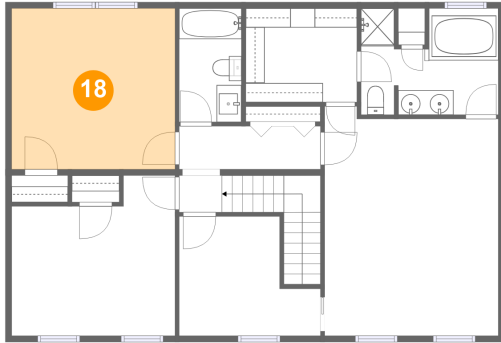


Dimensions: 9'0" x 7'7"
Area: 68 sq. ft
Counted as Living Area:
Yes

Heated: Yes
Finished: Yes
Enclosed: Yes
Contiguous:
Yes
Permitted: Yes
Wet Space: No
Addition: No
Conversion: No

7580 Mount Chestnut Road, Roanoke, Roanoke County, Virginia, United States, 24018

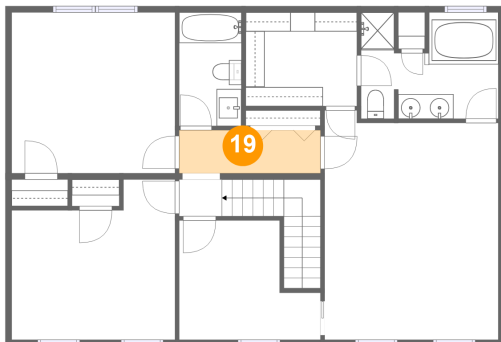
18 Floor 3 - Bedroom



Dimensions: 13'2" x 12'11"
Area: 171 sq. ft
Counted as Living Area:
Yes

Heated: Yes
Finished: Yes
Enclosed: Yes
Contiguous:
Yes
Permitted: Yes
Wet Space: No
Addition: No
Conversion: No

19 Floor 3 - Hall



Dimensions: 11'5" x 3'6"
Area: 40 sq. ft
Counted as Living Area:
Yes

Heated: Yes
Finished: Yes
Enclosed: Yes
Contiguous:
Yes
Permitted: Yes
Wet Space: No
Addition: No
Conversion: No