

Home report

1215 Narrows Lock Road, Portland, United Counties of Leeds and Grenville, Ontario, Canada, K0G 1V0



Total Area: 1727 sq. ft

Floor 1: 0 sq. ft, Floor 2: 1559 sq. ft, Floor 3: 168 sq. ft


Excluded: Garage 2601 sq. ft, Covered patio 455 sq. ft, Patio 847 sq. ft, Porch 481 sq. ft, Walls: 299 sq. ft

Property summary

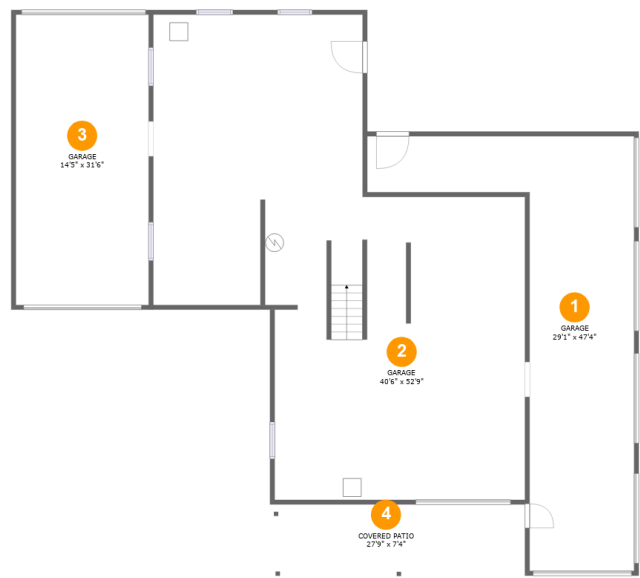
 **3** Floors

 **3** Bedrooms

 **2** Bathrooms

 **3** Garages

1215 Narrows Lock Road, Portland, United Counties of Leeds and Grenville, Ontario, Canada, K0G 1V0

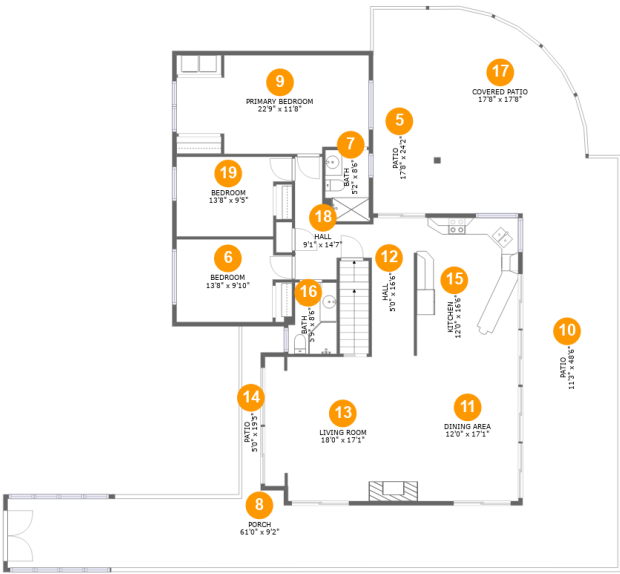


Room dimensions

Floor 1 Total:0sqft Excluded: 2805sqft

#		Max Dimensions	sqft	Included
1	Garage	29'1" x 47'4"	647 sq. ft	No
2	Garage	40'6" x 52'9"	1498 sq. ft	No
3	Garage	14'5" x 31'6"	456 sq. ft	No
4	Covered Patio	27'9" x 7'4"	204 sq. ft	No

1215 Narrows Lock Road, Portland, United Counties of Leeds and Grenville, Ontario, Canada, K0G 1V0



Room dimensions

Floor 2 Total:1559sqft Excluded: 1579sqft

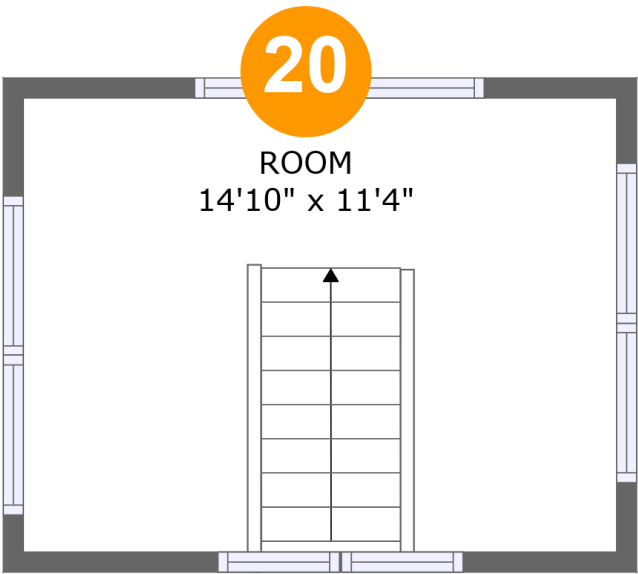
#		Max Dimensions	sqft	Included
5	Patio	17'8" x 24'2"	247 sq. ft	No
6	Bedroom	13'8" x 9'10"	118 sq. ft	Yes
7	Bath	5'2" x 8'6"	44 sq. ft	Yes
8	Porch	61'0" x 9'2"	481 sq. ft	No
9	Primary Bedroom	22'9" x 11'8"	233 sq. ft	Yes
10	Patio	11'3" x 48'6"	547 sq. ft	No
11	Dining Area	12'0" x 17'1"	206 sq. ft	Yes
12	Hall	5'0" x 16'6"	82 sq. ft	Yes
13	Living Room	18'0" x 17'1"	302 sq. ft	Yes
14	Patio	5'0" x 19'5"	53 sq. ft	No
15	Kitchen	12'0" x 16'6"	204 sq. ft	Yes

Home report

1215 Narrows Lock Road, Portland, United Counties of Leeds and Grenville, Ontario, Canada, K0G 1V0

#		Max Dimensions	sqft	Included
16	Bath	5'9" x 8'6"	45 sq. ft	Yes
17	Covered Patio	17'8" x 17'8"	251 sq. ft	No
18	Hall	9'1" x 14'7"	75 sq. ft	Yes
19	Bedroom	13'8" x 9'5"	115 sq. ft	Yes

1215 Narrows Lock Road, Portland, United Counties of Leeds and Grenville, Ontario, Canada, K0G 1V0



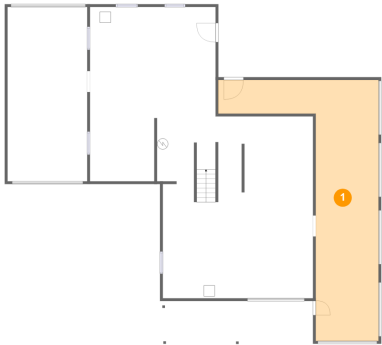
Room dimensions

Floor 3 Total:168sqft Excluded: 0sqft

#		Max Dimensions	sqft	Included
20	Room	14'10" x 11'4"	168 sq. ft	Yes

1215 Narrows Lock Road, Portland, United Counties of Leeds and Grenville, Ontario, Canada, K0G 1V0

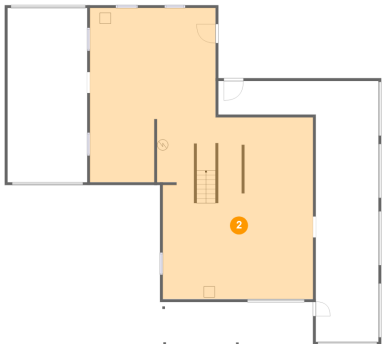
1 Floor 1 - Garage



Max Dimensions: 29'1" x 47'4"
Calculated Area: 647 sq. ft
Included: No

Heated: No
Finished: No
Enclosed: Yes
Contiguous: Yes
Permitted: Yes
Wet space: No
Addition: No
Conversion: No

2 Floor 1 - Garage

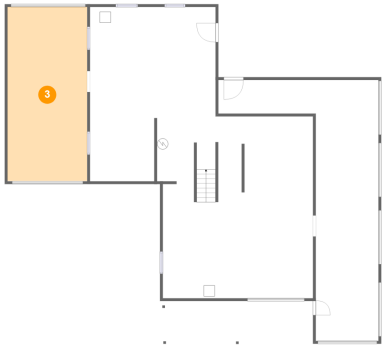


Max Dimensions: 40'6" x 52'9"
Calculated Area: 1498 sq. ft
Included: No

Heated: No
Finished: No
Enclosed: Yes
Contiguous: Yes
Permitted: Yes
Wet space: No
Addition: No
Conversion: No

1215 Narrows Lock Road, Portland, United Counties of Leeds and Grenville, Ontario, Canada, K0G 1V0

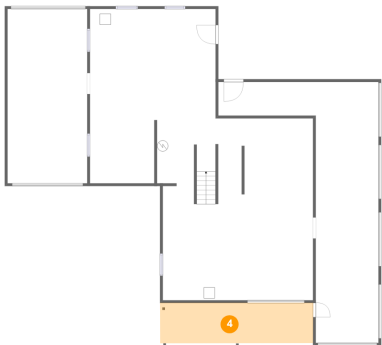
3 Floor 1 - Garage



Max Dimensions: 14'5" x 31'6"
Calculated Area: 456 sq. ft
Included: No

Heated: No
Finished: No
Enclosed: Yes
Contiguous: Yes
Permitted: Yes
Wet space: No
Addition: No
Conversion: No

4 Floor 1 - Covered Patio



Max Dimensions: 27'9" x 7'4"
Calculated Area: 204 sq. ft
Included: No

Heated: No
Finished: Yes
Enclosed: No
Contiguous: Yes
Permitted: Yes
Wet space: No
Addition: No
Conversion: No

5 Floor 2 - Patio



Max Dimensions: 17'8" x 24'2"
Calculated Area: 247 sq. ft
Included: No

Heated: No
Finished: Yes
Enclosed: No
Contiguous: Yes
Permitted: Yes
Wet space: No
Addition: No
Conversion: No

1215 Narrows Lock Road, Portland, United Counties of Leeds and Grenville, Ontario, Canada, K0G 1V0

6 Floor 2 - Bedroom



Max Dimensions: 13'8" x 9'10"
Calculated Area: 118 sq. ft
Included: Yes

Heated: Yes
Finished: Yes
Enclosed: Yes
Contiguous: Yes
Permitted: Yes
Wet space: No
Addition: No
Conversion: No

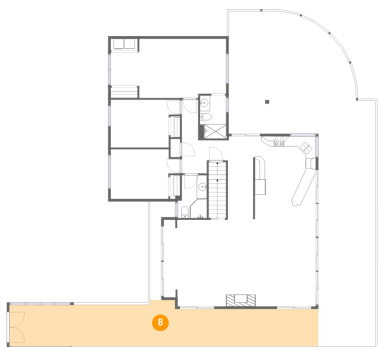
7 Floor 2 - Bath



Max Dimensions: 5'2" x 8'6"
Calculated Area: 44 sq. ft
Included: Yes

Heated: Yes
Finished: Yes
Enclosed: Yes
Contiguous: Yes
Permitted: Yes
Wet space: Yes
Addition: No
Conversion: No

8 Floor 2 - Porch



Max Dimensions: 61'0" x 9'2"
Calculated Area: 481 sq. ft
Included: No

Heated: No
Finished: Yes
Enclosed: No
Contiguous: Yes
Permitted: Yes
Wet space: No
Addition: No
Conversion: No

1215 Narrows Lock Road, Portland, United Counties of Leeds and Grenville, Ontario, Canada, K0G 1V0

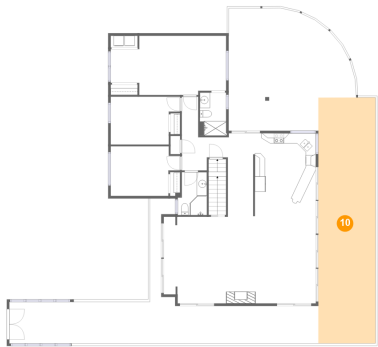
9 Floor 2 - Primary Bedroom



Max Dimensions: 22'9" x 11'8"
Calculated Area: 233 sq. ft
Included: Yes

Heated: Yes
Finished: Yes
Enclosed: Yes
Contiguous: Yes
Permitted: Yes
Wet space: No
Addition: No
Conversion: No

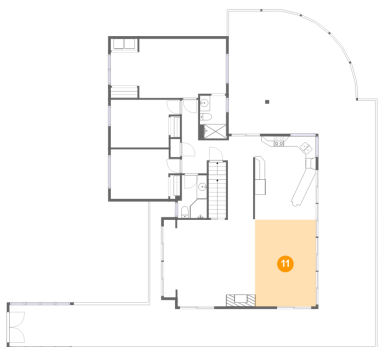
10 Floor 2 - Patio



Max Dimensions: 11'3" x 48'6"
Calculated Area: 547 sq. ft
Included: No

Heated: No
Finished: Yes
Enclosed: No
Contiguous: Yes
Permitted: Yes
Wet space: No
Addition: No
Conversion: No

11 Floor 2 - Dining Area



Max Dimensions: 12'0" x 17'1"
Calculated Area: 206 sq. ft
Included: Yes

Heated: Yes
Finished: Yes
Enclosed: Yes
Contiguous: Yes
Permitted: Yes
Wet space: No
Addition: No
Conversion: No

1215 Narrows Lock Road, Portland, United Counties of Leeds and Grenville, Ontario, Canada, K0G 1V0

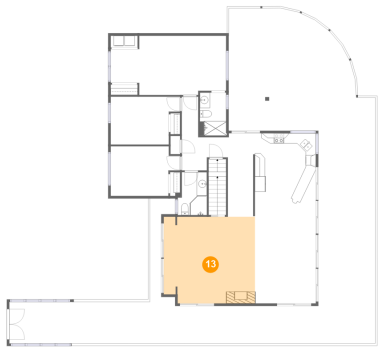
12 Floor 2 - Hall



Max Dimensions: 5'0" x 16'6"
Calculated Area: 82 sq. ft
Included: Yes

Heated: Yes
Finished: Yes
Enclosed: Yes
Contiguous: Yes
Permitted: Yes
Wet space: No
Addition: No
Conversion: No

13 Floor 2 - Living Room



Max Dimensions: 18'0" x 17'1"
Calculated Area: 302 sq. ft
Included: Yes

Heated: Yes
Finished: Yes
Enclosed: Yes
Contiguous: Yes
Permitted: Yes
Wet space: No
Addition: No
Conversion: No

14 Floor 2 - Patio



Max Dimensions: 5'0" x 19'5"
Calculated Area: 53 sq. ft
Included: No

Heated: No
Finished: Yes
Enclosed: No
Contiguous: Yes
Permitted: Yes
Wet space: No
Addition: No
Conversion: No

1215 Narrows Lock Road, Portland, United Counties of Leeds and Grenville, Ontario, Canada, K0G 1V0

15 Floor 2 - Kitchen



Max Dimensions: 12'0" x 16'6"
Calculated Area: 204 sq. ft
Included: Yes

Heated: Yes
Finished: Yes
Enclosed: Yes
Contiguous: Yes
Permitted: Yes
Wet space: No
Addition: No
Conversion: No

16 Floor 2 - Bath



Max Dimensions: 5'9" x 8'6"
Calculated Area: 45 sq. ft
Included: Yes

Heated: Yes
Finished: Yes
Enclosed: Yes
Contiguous: Yes
Permitted: Yes
Wet space: Yes
Addition: No
Conversion: No

17 Floor 2 - Covered Patio



Max Dimensions: 17'8" x 17'8"
Calculated Area: 251 sq. ft
Included: No

Heated: No
Finished: Yes
Enclosed: No
Contiguous: Yes
Permitted: Yes
Wet space: No
Addition: No
Conversion: No

1215 Narrows Lock Road, Portland, United Counties of Leeds and Grenville, Ontario, Canada, K0G 1V0

18 Floor 2 - Hall



Max Dimensions: 9'1" x 14'7"
Calculated Area: 75 sq. ft
Included: Yes

Heated: Yes
Finished: Yes
Enclosed: Yes
Contiguous: Yes
Permitted: Yes
Wet space: No
Addition: No
Conversion: No

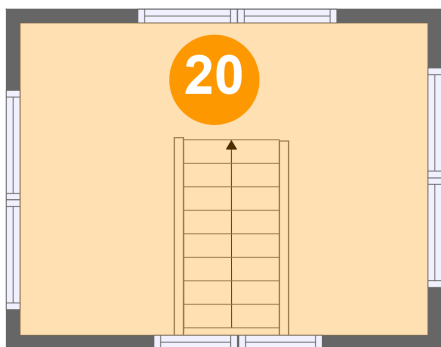
19 Floor 2 - Bedroom



Max Dimensions: 13'8" x 9'5"
Calculated Area: 115 sq. ft
Included: Yes

Heated: Yes
Finished: Yes
Enclosed: Yes
Contiguous: Yes
Permitted: Yes
Wet space: No
Addition: No
Conversion: No

20 Floor 3 - Room



Max Dimensions: 14'10" x 11'4"
Calculated Area: 168 sq. ft
Included: Yes

Heated: Yes
Finished: Yes
Enclosed: Yes
Contiguous: Yes
Permitted: Yes
Wet space: No
Addition: No
Conversion: No