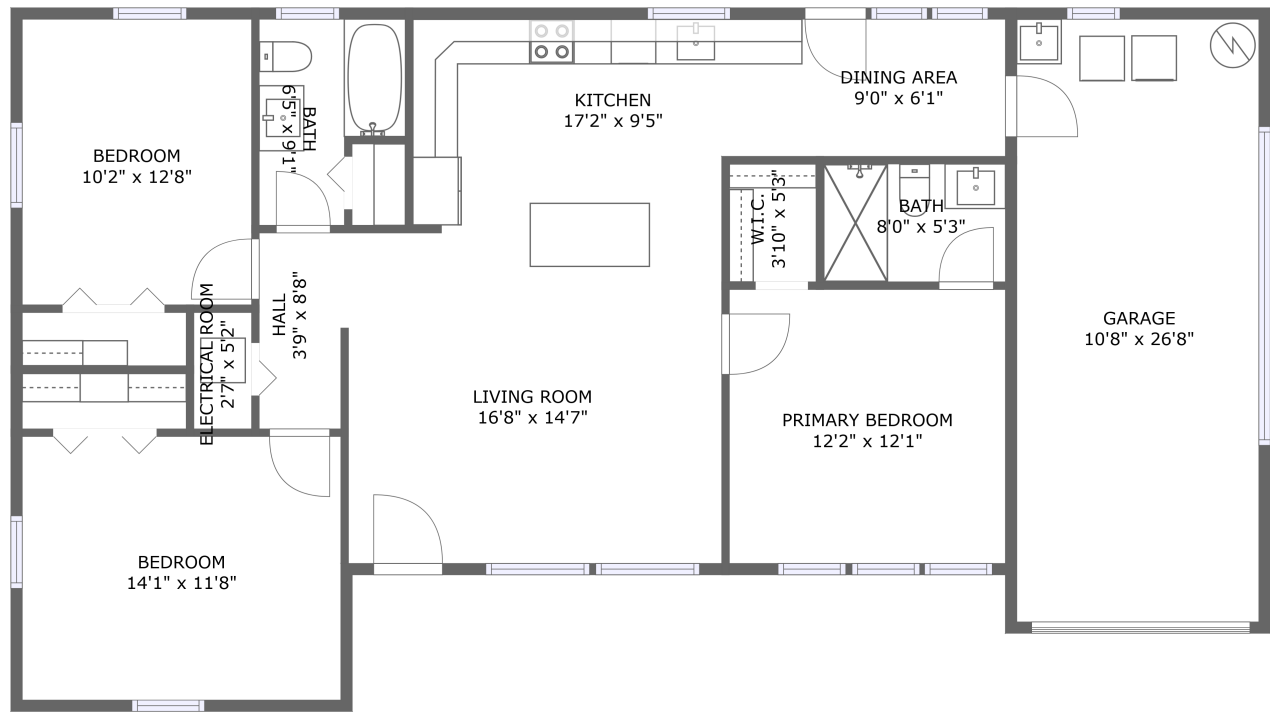


Home report

14 South Meteor Avenue, Skycrest, Clearwater, Pinellas County, Florida, United States, 33765



FLOOR 1


Property summary


 **1** Garages


 **3** Bedrooms

 **2** Bathrooms

 **0** Half baths

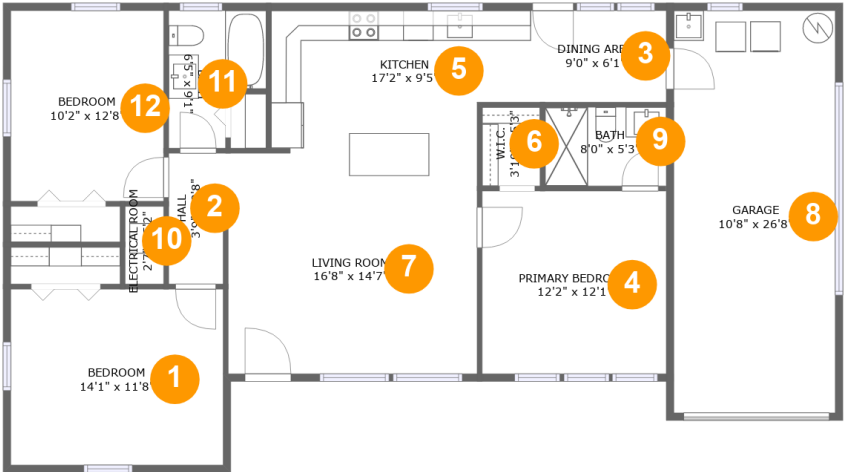
 **1** Floors

 **1,191** Gross living area sqft

 **1,515** Total sqft

Home report

14 South Meteor Avenue, Skycrest, Clearwater, Pinellas County, Florida, United States, 33765



Room dimensions

Floor 1 Total sqft: 1515 Living area: 1191

#		Dimensions	sqft	Counted as living area
1	Bedroom	14'1" x 11'8"	164 sq. ft	Yes
2	Hall	3'9" x 8'8"	32 sq. ft	Yes
3	Dining Area	9'0" x 6'1"	55 sq. ft	Yes
4	Primary Bedroom	12'2" x 12'1"	148 sq. ft	Yes
5	Kitchen	17'2" x 9'5"	150 sq. ft	Yes
6	W.I.C.	3'10" x 5'3"	20 sq. ft	Yes
7	Living Room	16'8" x 14'7"	242 sq. ft	Yes
8	Garage	10'8" x 26'8"	285 sq. ft	No
9	Bath	8'0" x 5'3"	42 sq. ft	Yes
10	Electrical Room	2'7" x 5'2"	13 sq. ft	No
11	Bath	6'5" x 9'1"	48 sq. ft	Yes

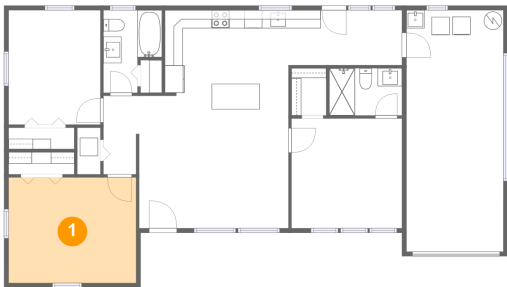
Home report

14 South Meteor Avenue, Skycrest, Clearwater, Pinellas County,
Florida, United States, 33765

#		Dimensions	sqft	Counted as living area
12	Bedroom	10'2" x 12'8"	128 sq. ft	Yes

14 South Meteor Avenue, Skycrest, Clearwater, Pinellas County,
Florida, United States, 33765

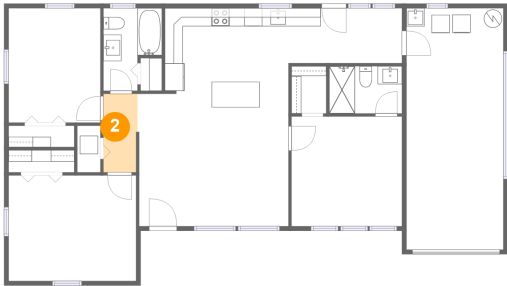
1 Floor 1 - Bedroom



Dimensions: 14'1" x 11'8"
Area: 164 sq. ft
Counted as living area: Yes

Heated: Yes
Finished: Yes
Enclosed: Yes
Contiguous: Yes
Permitted: Yes
Wet space: No
Addition: No
Conversion: No

2 Floor 1 - Hall



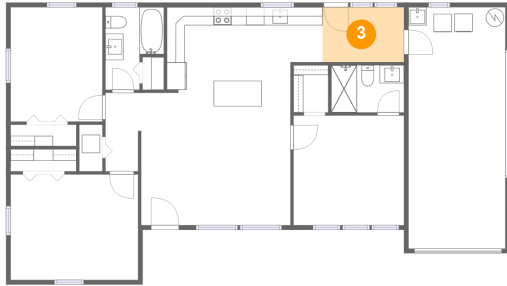
Dimensions: 3'9" x 8'8"
Area: 32 sq. ft
Counted as living area: Yes

Heated: Yes
Finished: Yes
Enclosed: Yes
Contiguous: Yes
Permitted: Yes
Wet space: No
Addition: No
Conversion: No

Home report

14 South Meteor Avenue, Skycrest, Clearwater, Pinellas County,
Florida, United States, 33765

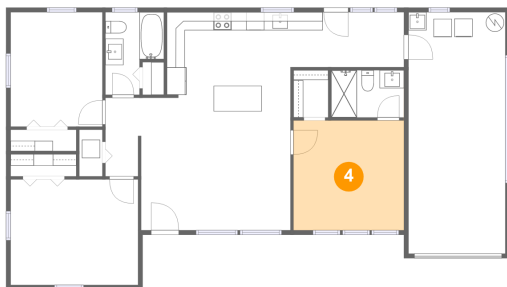
3 Floor 1 - Dining Area



Dimensions: 9'0" x 6'1"
Area: 55 sq. ft
Counted as living area: Yes

Heated: Yes
Finished: Yes
Enclosed: Yes
Contiguous: Yes
Permitted: Yes
Wet space: No
Addition: No
Conversion: No

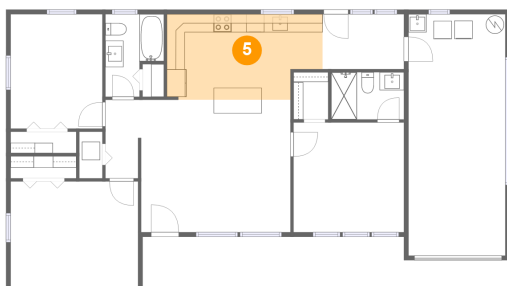
4 Floor 1 - Primary Bedroom



Dimensions: 12'2" x 12'1"
Area: 148 sq. ft
Counted as living area: Yes

Heated: Yes
Finished: Yes
Enclosed: Yes
Contiguous: Yes
Permitted: Yes
Wet space: No
Addition: No
Conversion: No

5 Floor 1 - Kitchen



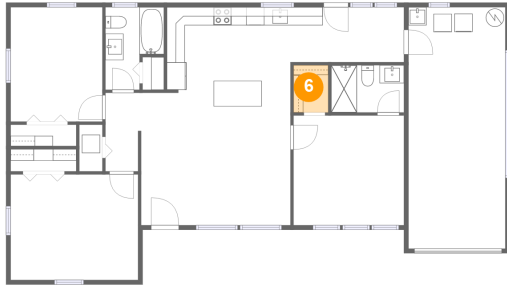
Dimensions: 17'2" x 9'5"
Area: 150 sq. ft
Counted as living area: Yes

Heated: Yes
Finished: Yes
Enclosed: Yes
Contiguous: Yes
Permitted: Yes
Wet space: No
Addition: No
Conversion: No

Home report

14 South Meteor Avenue, Skycrest, Clearwater, Pinellas County,
Florida, United States, 33765

6 Floor 1 - W.I.C.



Dimensions: 3'10" x 5'3"
Area: 20 sq. ft
Counted as living area: Yes

Heated: Yes
Finished: Yes
Enclosed: Yes
Contiguous: Yes
Permitted: Yes
Wet space: No
Addition: No
Conversion: No

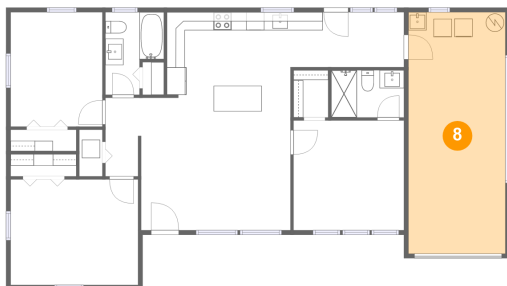
7 Floor 1 - Living Room



Dimensions: 16'8" x 14'7"
Area: 242 sq. ft
Counted as living area: Yes

Heated: Yes
Finished: Yes
Enclosed: Yes
Contiguous: Yes
Permitted: Yes
Wet space: No
Addition: No
Conversion: No

8 Floor 1 - Garage



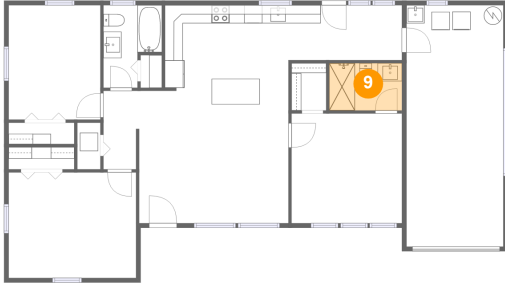
Dimensions: 10'8" x 26'8"
Area: 285 sq. ft
Counted as living area: No

Heated: No
Finished: No
Enclosed: Yes
Contiguous: Yes
Permitted: Yes
Wet space: No
Addition: No
Conversion: No

Home report

14 South Meteor Avenue, Skycrest, Clearwater, Pinellas County,
Florida, United States, 33765

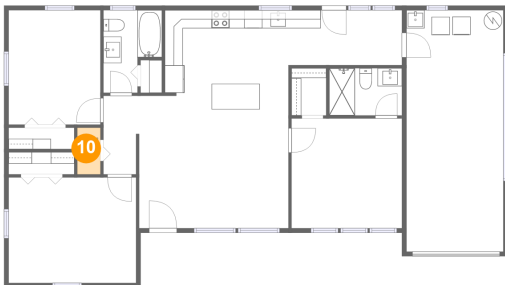
9 Floor 1 - Bath



Dimensions: 8'0" x 5'3"
Area: 42 sq. ft
Counted as living area: Yes

Heated: Yes
Finished: Yes
Enclosed: Yes
Contiguous: Yes
Permitted: Yes
Wet space: Yes
Addition: No
Conversion: No

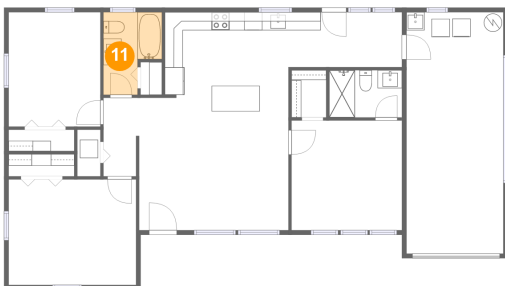
10 Floor 1 - Electrical Room



Dimensions: 2'7" x 5'2"
Area: 13 sq. ft
Counted as living area: No

Heated: No
Finished: No
Enclosed: Yes
Contiguous: Yes
Permitted: Yes
Wet space: No
Addition: No
Conversion: No

11 Floor 1 - Bath

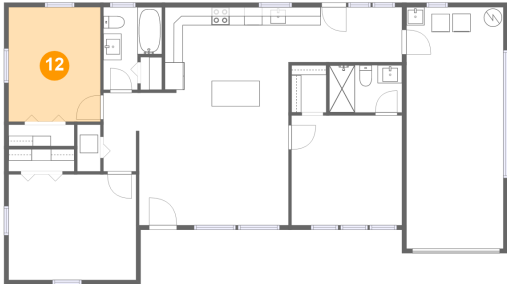


Dimensions: 6'5" x 9'1"
Area: 48 sq. ft
Counted as living area: Yes

Heated: Yes
Finished: Yes
Enclosed: Yes
Contiguous: Yes
Permitted: Yes
Wet space: Yes
Addition: No
Conversion: No

14 South Meteor Avenue, Skycrest, Clearwater, Pinellas County,
Florida, United States, 33765

12 Floor 1 - Bedroom



Dimensions: 10'2" x 12'8"
Area: 128 sq. ft
Counted as living area: Yes

Heated: Yes
Finished: Yes
Enclosed: Yes
Contiguous: Yes
Permitted: Yes
Wet space: No
Addition: No
Conversion: No