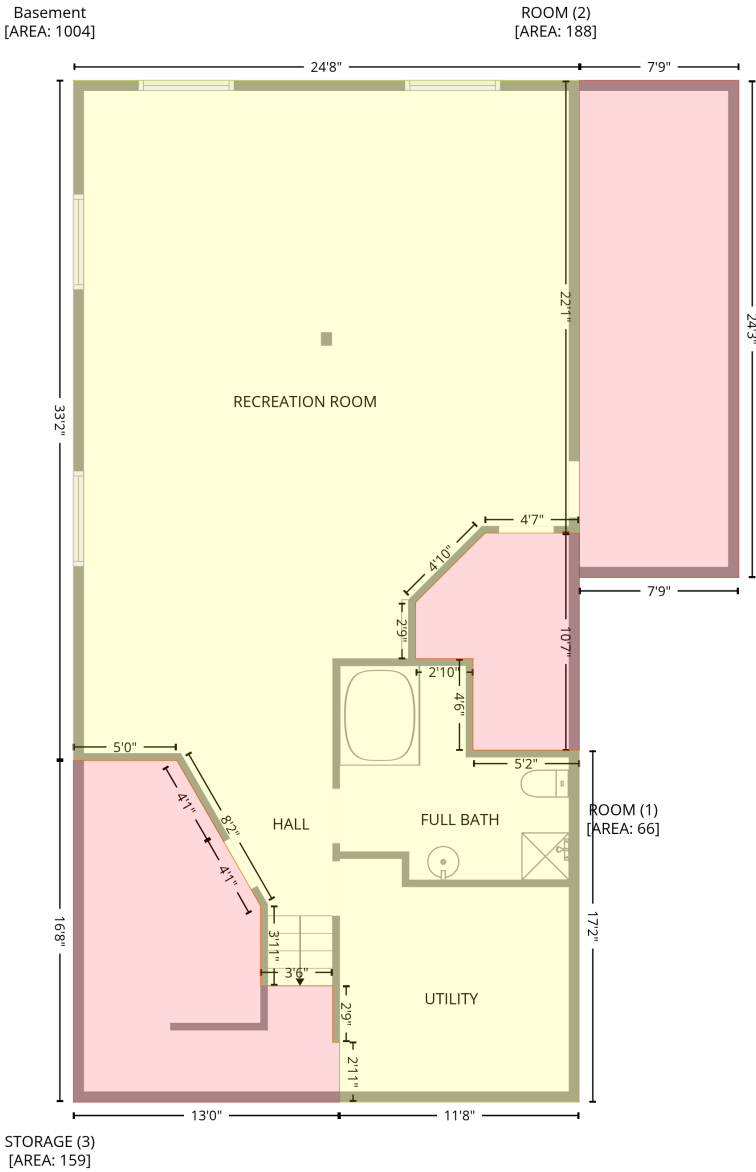


3248 Golf Club Road, Glanbrook, Hannon, Ontario, Canada, LOR 1P0

Gross Living Area: 1797 sq. ft

Level 1 - Below Grade



Space	Area (sq. ft)	Calculation
Basement (Living area)	1004	Coordinate Polygon Area Algorithm using inches $-((620.1 + 620.1) * (2.7 - 267.7) + (620.1 + 565) * (267.7 - 267.7) + (565 + 524.3) * (267.7 - 308.4) + (524.3 + 524.3) * (308.4 - 341.3) + (524.3 + 557.9) * (341.3 - 341.3) + (557.9 + 557.9) * (341.3 - 394.8) + (557.9 + 620.1) * (394.8 - 394.8) + (620.1 + 620.1) * (394.8 - 600.8) + (620.1 + 479.9) * (600.8 - 600.8) + (479.9 + 479.9) * (600.8 - 565.7) + (479.9 + 475.9) * (565.7 - 565.7) + (475.9 + 475.9) * (565.7 - 532.8) + (475.9 + 433.8) * (532.8 - 532.8) + (433.8 + 433.8) * (532.8 - 486.1) + (433.8 + 384.8) * (486.1 - 400.8) + (384.8 + 324.3) * (400.8 - 400.8) + (324.3 + 324.3) * (400.8 - 2.7) + (324.3 + 620.1) * (2.7 - 2.7)) * 0.5 * 0.00694$

3248 Golf Club Road, Glanbrook, Hannon, Ontario, Canada, L0R 1P0

Gross Living Area: 1797 sq. ft

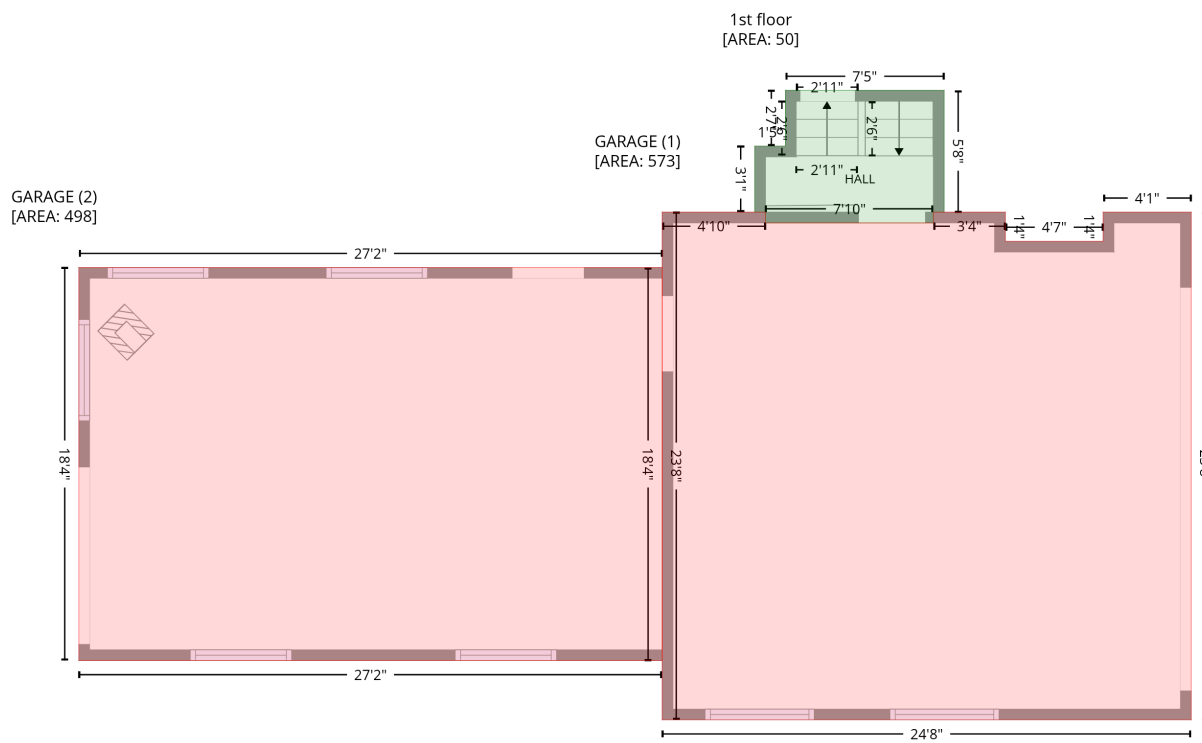
Level 1 - Below Grade

Space	Area (sq. ft)	Calculation <small>Coordinate Polygon Area Algorithm using inches</small>
ROOM (Non-living area)	66	$-\left((620.1 + 620.1) * (267.7 - 394.8) + (620.1 + 557.9) * (394.8 - 394.8) + (557.9 + 557.9) * (394.8 - 341.3) + (557.9 + 524.3) * (341.3 - 341.3) + (524.3 + 524.3) * (341.3 - 308.4) + (524.3 + 565) * (308.4 - 267.7) + (565 + 620.1) * (267.7 - 267.7)\right) * 0.5 * 0.00694$
ROOM (Non-living area)	188	$-\left((713.3 + 713.3) * (2.7 - 293.7) + (713.3 + 620.1) * (293.7 - 293.7) + (620.1 + 620.1) * (293.7 - 2.7) + (620.1 + 713.3) * (2.7 - 2.7)\right) * 0.5 * 0.00694$
STORAGE (Non-living area)	159	$-\left((384.8 + 409.4) * (400.8 - 443.3) + (409.4 + 433.8) * (443.3 - 486.1) + (433.8 + 433.8) * (486.1 - 532.8) + (433.8 + 475.9) * (532.8 - 532.8) + (475.9 + 475.9) * (532.8 - 565.7) + (475.9 + 479.9) * (565.7 - 565.7) + (479.9 + 479.9) * (565.7 - 600.8) + (479.9 + 324.3) * (600.8 - 600.8) + (324.3 + 324.3) * (600.8 - 400.8) + (324.3 + 384.8) * (400.8 - 400.8)\right) * 0.5 * 0.00694$

3248 Golf Club Road, Glanbrook, Hannon, Ontario, Canada, L0R 1P0

Gross Living Area: 1797 sq. ft

Level 2



Space	Area (sq. ft)	Calculation <small>Coordinate Polygon Area Algorithm using inches</small>
1st floor (Living area)	50	$-\left((481.9 + 481.9) * (526.7 - 594.8) + (481.9 + 475.9) * (594.8 - 594.8) + (475.9 + 475.9) * (594.8 - 600.8) + (475.9 + 382.1) * (600.8 - 600.8) + (382.1 + 382.1) * (600.8 - 594.8) + (382.1 + 376.1) * (594.8 - 594.8) + (376.1 + 376.1) * (594.8 - 557.9) + (376.1 + 393.2) * (557.9 - 557.9) + (393.2 + 393.2) * (557.9 - 526.7) + (393.2 + 481.9) * (526.7 - 526.7)\right) * 0.5 * 0.00694$
GARAGE (Non-living area)	573	$-\left((382.1 + 382.1) * (594.8 - 600.8) + (382.1 + 475.9) * (600.8 - 600.8) + (475.9 + 475.9) * (600.8 - 594.8) + (475.9 + 516.2) * (594.8 - 594.8) + (516.2 + 516.2) * (594.8 - 611.1) + (516.2 + 570.8) * (611.1 - 611.1) + (570.8 + 570.8) * (611.1 - 594.8) + (570.8 + 620.1) * (594.8 - 594.8) + (620.1 + 620.1) * (594.8 - 878.7) + (620.1 + 324.3) * (878.7 - 878.7) + (324.3 + 324.3) * (878.7 - 594.8) + (324.3 + 382.1) * (594.8 - 594.8)\right) * 0.5 * 0.00694$
GARAGE (Non-living area)	498	$-\left((324.3 + 324.3) * (625.8 - 845.5) + (324.3 + -1.8) * (845.5 - 845.5) + (-1.8 + -1.8) * (845.5 - 625.8) + (-1.8 + 324.3) * (625.8 - 625.8)\right) * 0.5 * 0.00694$

3248 Golf Club Road, Glanbrook, Hannon, Ontario, Canada, L0R 1P0

Gross Living Area: 1797 sq. ft

Level 3



3248 Golf Club Road, Glanbrook, Hannon, Ontario, Canada, L0R 1P0

Gross Living Area: 1797 sq. ft

Level 3

Space	Area (sq. ft)	Calculation <small>Coordinate Polygon Area Algorithm using inches</small>
2nd floor (Living area)	1747	$-\left((702.4 + 702.4) * (2.7 - 387.8) + (702.4 + 620.1) * (387.8 - 387.8) + (620.1 + 620.1) * (387.8 - 600.8) + (620.1 + 576.8) * (600.8 - 600.8) + (576.8 + 576.8) * (600.8 - 617.1) + (576.8 + 510.2) * (617.1 - 617.1) + (510.2 + 510.2) * (617.1 - 600.8) + (510.2 + 473.9) * (600.8 - 600.8) + (473.9 + 473.9) * (600.8 - 510.3) + (473.9 + 439.8) * (510.3 - 510.3) + (439.8 + 439.8) * (510.3 - 533) + (439.8 + 433.8) * (533 - 533) + (433.8 + 433.8) * (533 - 563) + (433.8 + 437.7) * (563 - 563) + (437.7 + 437.7) * (563 - 569) + (437.7 + 399.2) * (569 - 569) + (399.2 + 399.2) * (569 - 631.8) + (399.2 + 324.3) * (631.8 - 631.8) + (324.3 + 324.3) * (631.8 - 426) + (324.3 + 55.8) * (426 - 426) + (55.8 + 55.8) * (426 - 261.7) + (55.8 + 324.3) * (261.7 - 261.7) + (324.3 + 324.3) * (261.7 - 2.7) + (324.3 + 702.4) * (2.7 - 2.7)) * 0.5 * 0.00694$
Bay Window (Non-living area)	18	$-\left((620.1 + 643.4) * (414.6 - 452.4) + (643.4 + 643.4) * (452.4 - 524) + (643.4 + 620.1) * (524 - 561.8) + (620.1 + 620.1) * (561.8 - 414.6)) * 0.5 * 0.00694$