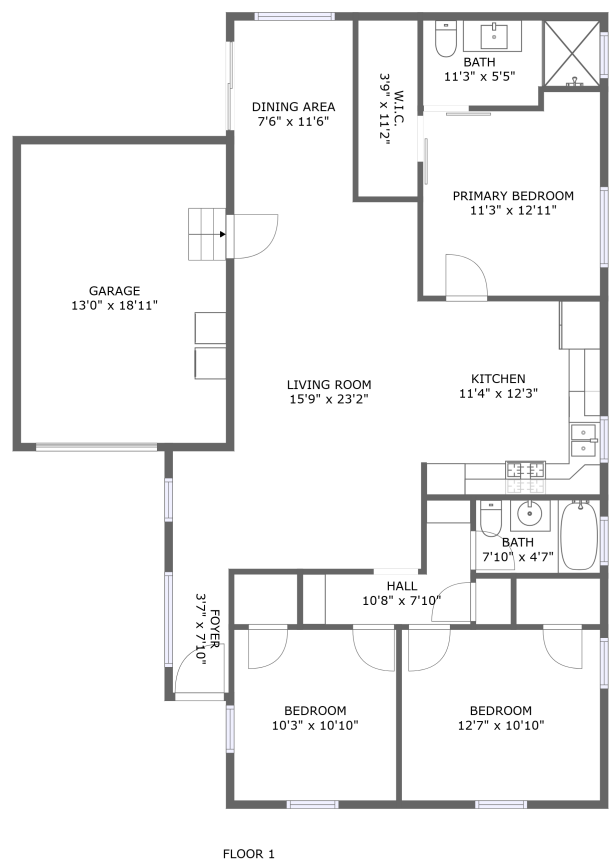


Home report

5216 Fidler Avenue, Lakewood, Los Angeles County, California,  
United States, 90712




**Total Area: 1206 sq. ft**

Floor 1: 1206 sq. ft


Excluded: Garage 246 sq. ft, Walls: 97 sq. ft

Property summary

 **1** Floors

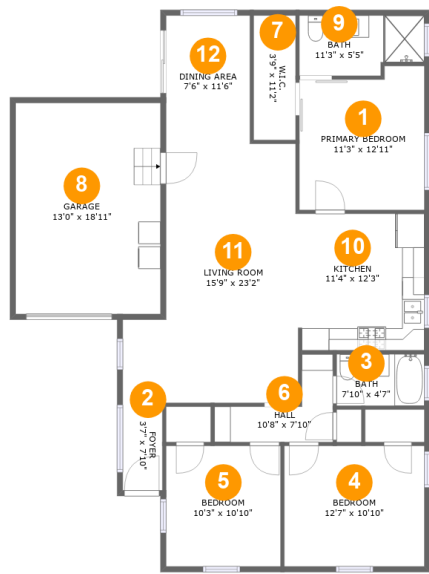
 **3** Bedrooms

 **2** Bathrooms

 **1** Garages

Home report

5216 Fidler Avenue, Lakewood, Los Angeles County, California,  
United States, 90712



Room dimensions

Floor 1 Total:1206sqft Excluded: 246sqft

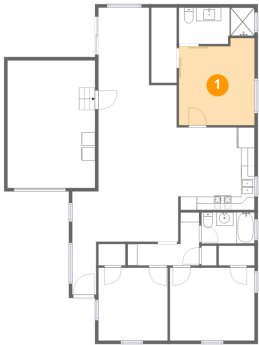
| #  |                 | Max Dimensions | sqft       | Included |
|----|-----------------|----------------|------------|----------|
| 1  | Primary Bedroom | 11'3" x 12'11" | 136 sq. ft | Yes      |
| 2  | Foyer           | 3'7" x 7'10"   | 28 sq. ft  | Yes      |
| 3  | Bath            | 7'10" x 4'7"   | 36 sq. ft  | Yes      |
| 4  | Bedroom         | 12'7" x 10'10" | 136 sq. ft | Yes      |
| 5  | Bedroom         | 10'3" x 10'10" | 111 sq. ft | Yes      |
| 6  | Hall            | 10'8" x 7'10"  | 47 sq. ft  | Yes      |
| 7  | W.I.C.          | 3'9" x 11'2"   | 42 sq. ft  | Yes      |
| 8  | Garage          | 13'0" x 18'11" | 246 sq. ft | No       |
| 9  | Bath            | 11'3" x 5'5"   | 56 sq. ft  | Yes      |
| 10 | Kitchen         | 11'4" x 12'3"  | 138 sq. ft | Yes      |
| 11 | Living Room     | 15'9" x 23'2"  | 303 sq. ft | Yes      |

Home report

5216 Fidler Avenue, Lakewood, Los Angeles County, California,  
United States, 90712

| #  |             | Max Dimensions | sqft      | Included |
|----|-------------|----------------|-----------|----------|
| 12 | Dining Area | 7'6" x 11'6"   | 87 sq. ft | Yes      |

1 Floor 1 - Primary Bedroom



Max Dimensions: 11'3" x 12'11"  
Calculated Area: 136 sq. ft  
Included: Yes

Heated: Yes  
Finished: Yes  
Enclosed: Yes  
Contiguous: Yes  
Permitted: Yes  
Wet space: No  
Addition: No  
Conversion: No

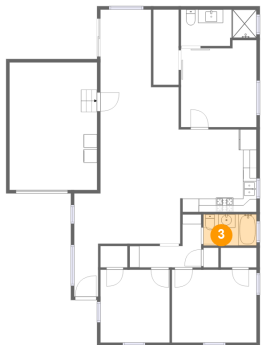
2 Floor 1 - Foyer



Max Dimensions: 3'7" x 7'10"  
Calculated Area: 28 sq. ft  
Included: Yes

Heated: Yes  
Finished: Yes  
Enclosed: Yes  
Contiguous: Yes  
Permitted: Yes  
Wet space: No  
Addition: No  
Conversion: No

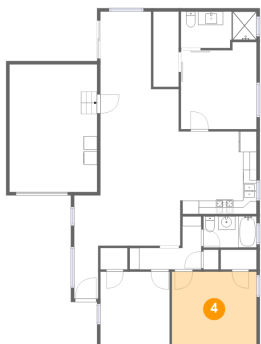
3 Floor 1 - Bath



Max Dimensions: 7'10" x 4'7"  
Calculated Area: 36 sq. ft  
Included: Yes

Heated: Yes  
Finished: Yes  
Enclosed: Yes  
Contiguous: Yes  
Permitted: Yes  
Wet space: Yes  
Addition: No  
Conversion: No

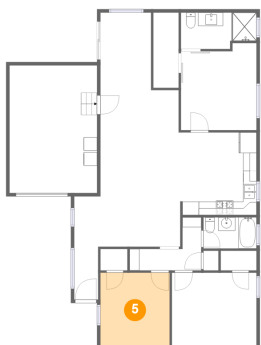
4 Floor 1 - Bedroom



Max Dimensions: 12'7" x 10'10"  
Calculated Area: 136 sq. ft  
Included: Yes

Heated: Yes  
Finished: Yes  
Enclosed: Yes  
Contiguous: Yes  
Permitted: Yes  
Wet space: No  
Addition: No  
Conversion: No

5 Floor 1 - Bedroom

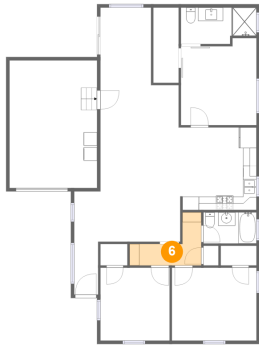


Max Dimensions: 10'3" x 10'10"  
Calculated Area: 111 sq. ft  
Included: Yes

Heated: Yes  
Finished: Yes  
Enclosed: Yes  
Contiguous: Yes  
Permitted: Yes  
Wet space: No  
Addition: No  
Conversion: No

5216 Fidler Avenue, Lakewood, Los Angeles County, California,  
United States, 90712

## 6 Floor 1 - Hall



Max Dimensions: 10'8" x 7'10"  
Calculated Area: 47 sq. ft  
Included: Yes

Heated: Yes  
Finished: Yes  
Enclosed: Yes  
Contiguous: Yes  
Permitted: Yes  
Wet space: No  
Addition: No  
Conversion: No

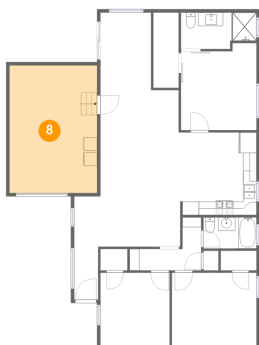
## 7 Floor 1 - W.I.C.



Max Dimensions: 3'9" x 11'2"  
Calculated Area: 42 sq. ft  
Included: Yes

Heated: Yes  
Finished: Yes  
Enclosed: Yes  
Contiguous: Yes  
Permitted: Yes  
Wet space: No  
Addition: No  
Conversion: No

## 8 Floor 1 - Garage



Max Dimensions: 13'0" x 18'11"  
Calculated Area: 246 sq. ft  
Included: No

Heated: No  
Finished: No  
Enclosed: Yes  
Contiguous: Yes  
Permitted: Yes  
Wet space: No  
Addition: No  
Conversion: No

## Home report

5216 Fidler Avenue, Lakewood, Los Angeles County, California,  
United States, 90712

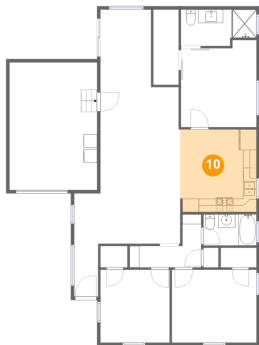
### 9 Floor 1 - Bath



Max Dimensions: 11'3" x 5'5"  
Calculated Area: 56 sq. ft  
Included: Yes

Heated: Yes  
Finished: Yes  
Enclosed: Yes  
Contiguous: Yes  
Permitted: Yes  
Wet space: Yes  
Addition: No  
Conversion: No

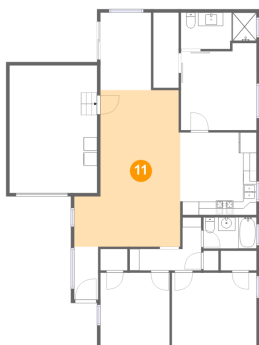
### 10 Floor 1 - Kitchen



Max Dimensions: 11'4" x 12'3"  
Calculated Area: 138 sq. ft  
Included: Yes

Heated: Yes  
Finished: Yes  
Enclosed: Yes  
Contiguous: Yes  
Permitted: Yes  
Wet space: No  
Addition: No  
Conversion: No

### 11 Floor 1 - Living Room



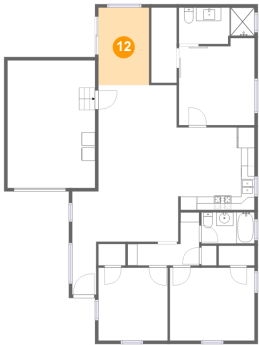
Max Dimensions: 15'9" x 23'2"  
Calculated Area: 303 sq. ft  
Included: Yes

Heated: Yes  
Finished: Yes  
Enclosed: Yes  
Contiguous: Yes  
Permitted: Yes  
Wet space: No  
Addition: No  
Conversion: No

Home report

5216 Fidler Avenue, Lakewood, Los Angeles County, California,  
United States, 90712

12 Floor 1 - Dining Area



Max Dimensions: 7'6" x 11'6"  
Calculated Area: 87 sq. ft  
Included: Yes

Heated: Yes  
Finished: Yes  
Enclosed: Yes  
Contiguous: Yes  
Permitted: Yes  
Wet space: No  
Addition: No  
Conversion: No