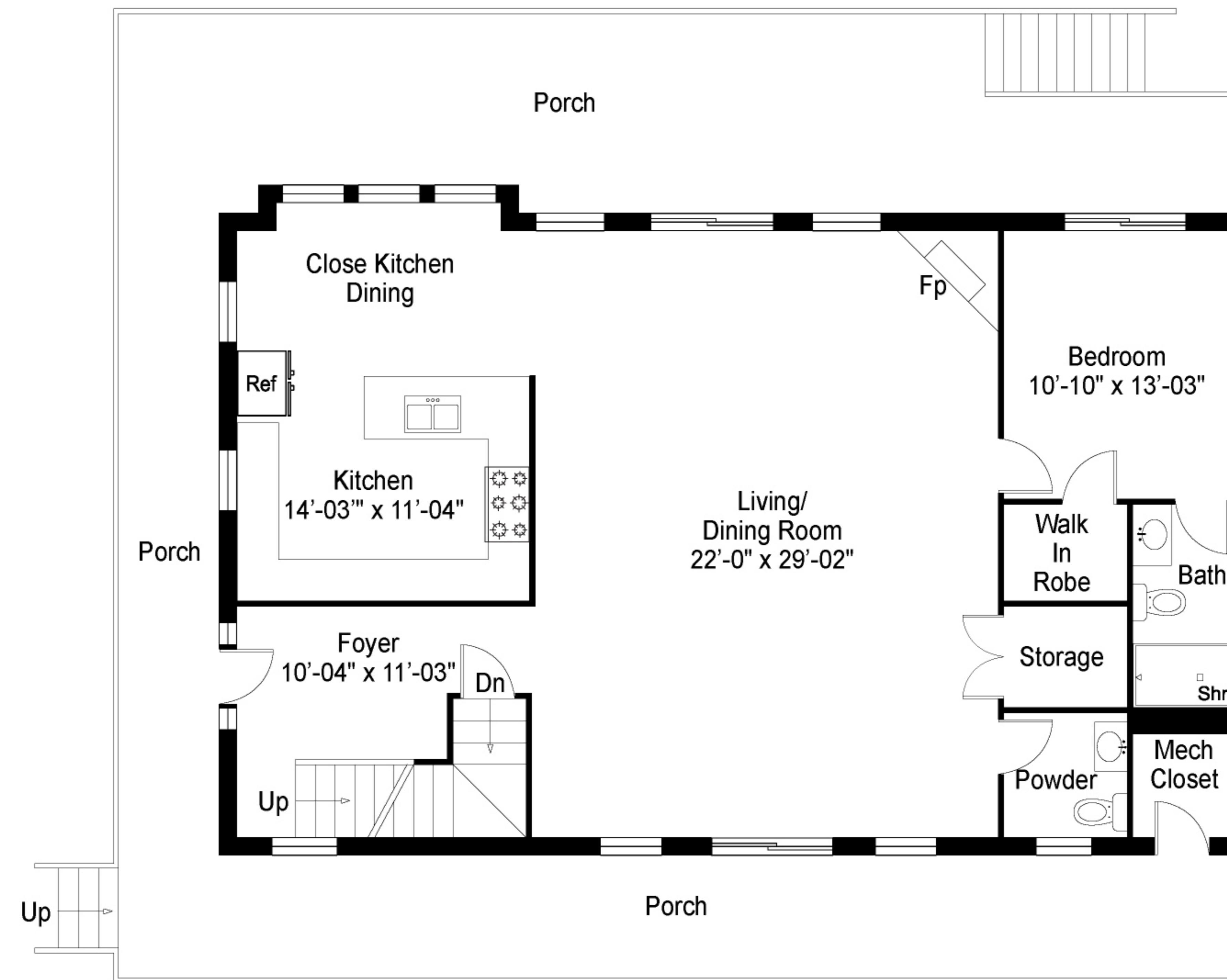
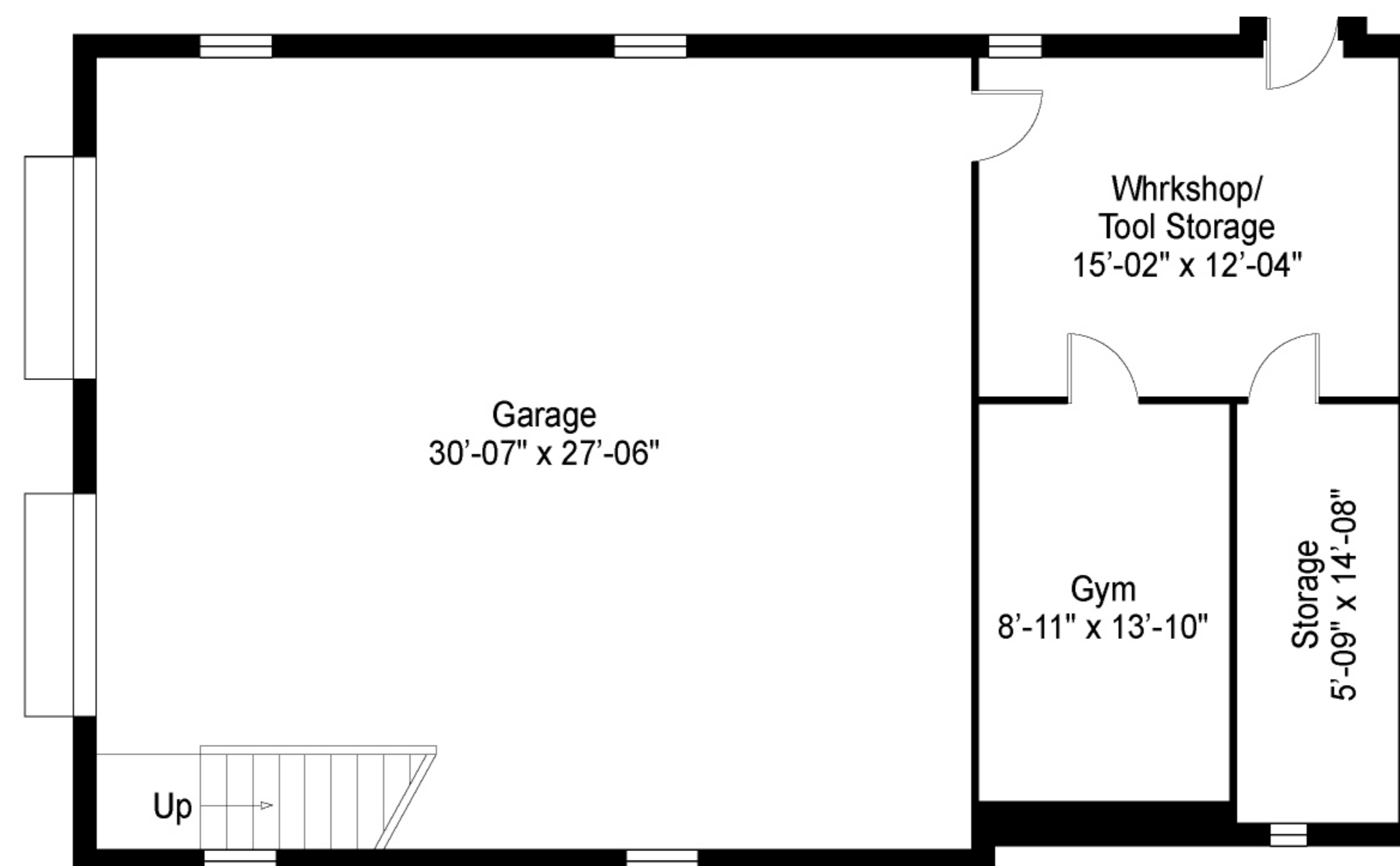


SECOND FLOOR



FIRST FLOOR

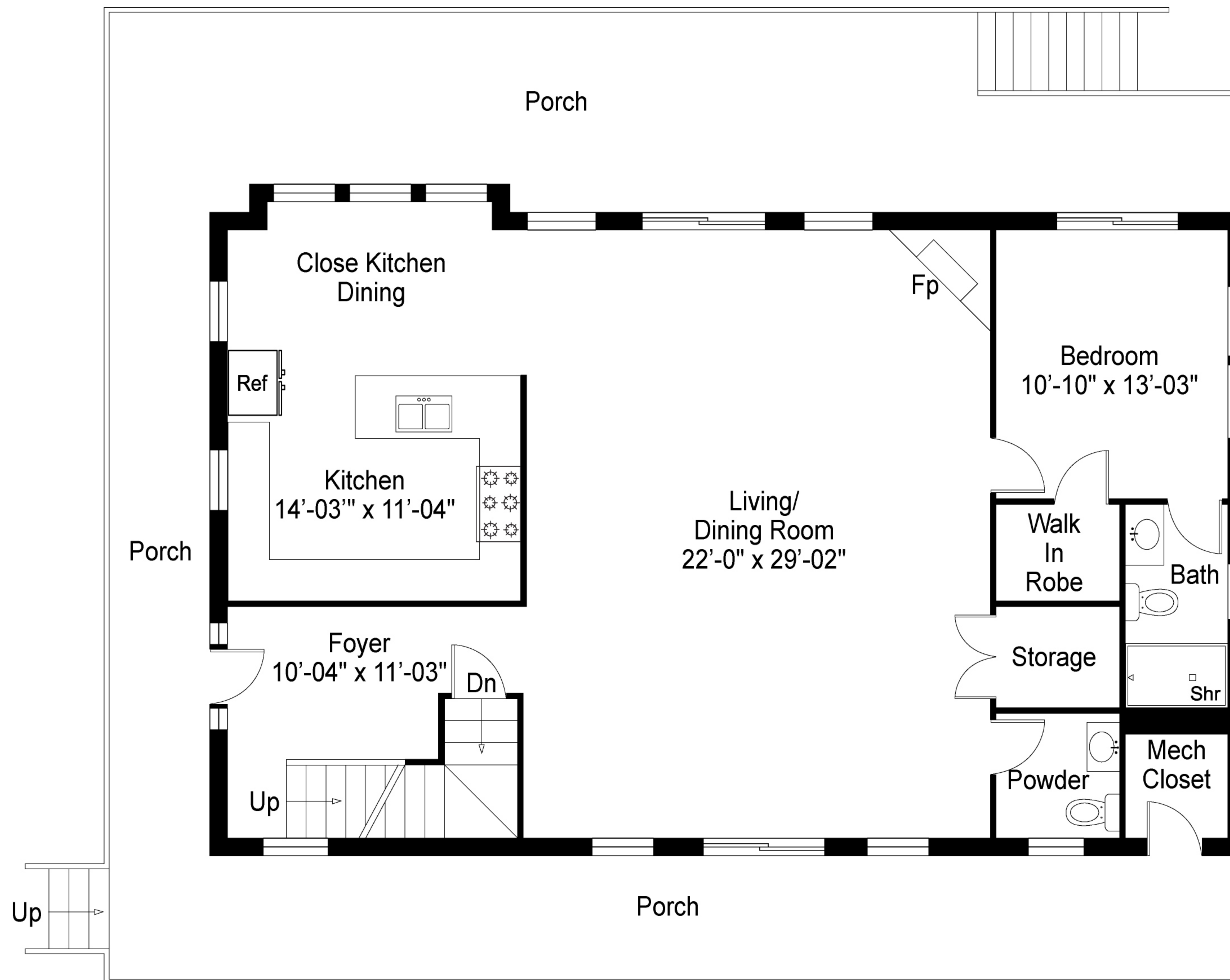


BASEMENT

Basement	1,271 Sq.Ft.
First Floor	1,380 Sq.Ft.
Second Floor	1,437 Sq.Ft.
Total	4,088 Sq.Ft.

Floor plan, furniture, and fixture measurements and dimensions are approximate and are for illustrative purposes only. The representative gives no guarantee, warranty or representation as to the accuracy and completeness of the floor plan.

20 Ludlow Lane, Hampton Bays, NY 11946



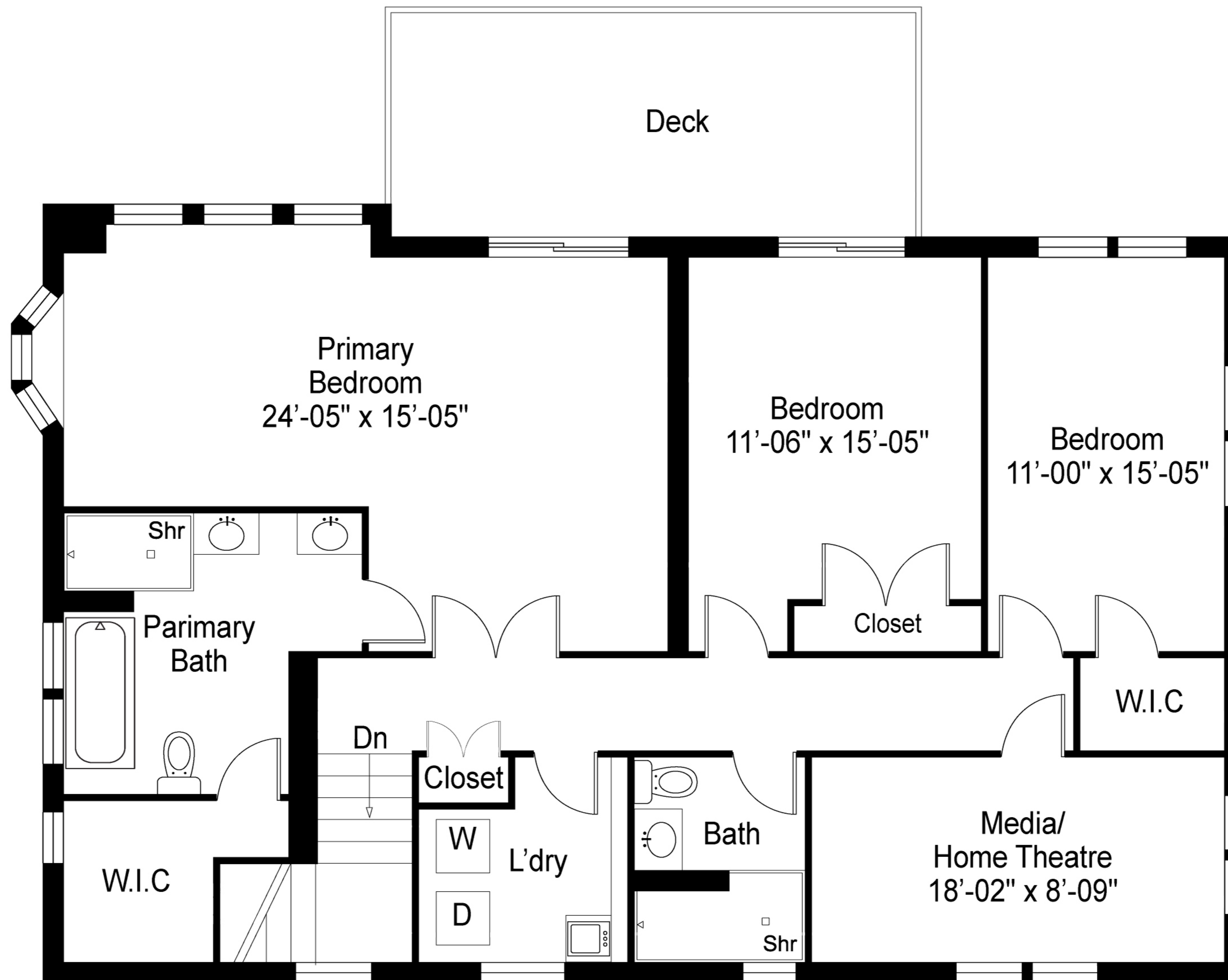
FIRST FLOOR

Floor plan, furniture, and fixture measurements and dimensions are approximate and are for illustrative purposes only. The representative gives no guarantee, warranty or representation as to the accuracy and completeness of the floor plan.

First Floor

1,380 Sq.Ft.

20 Ludlow Lane, Hampton Bays, NY 11946

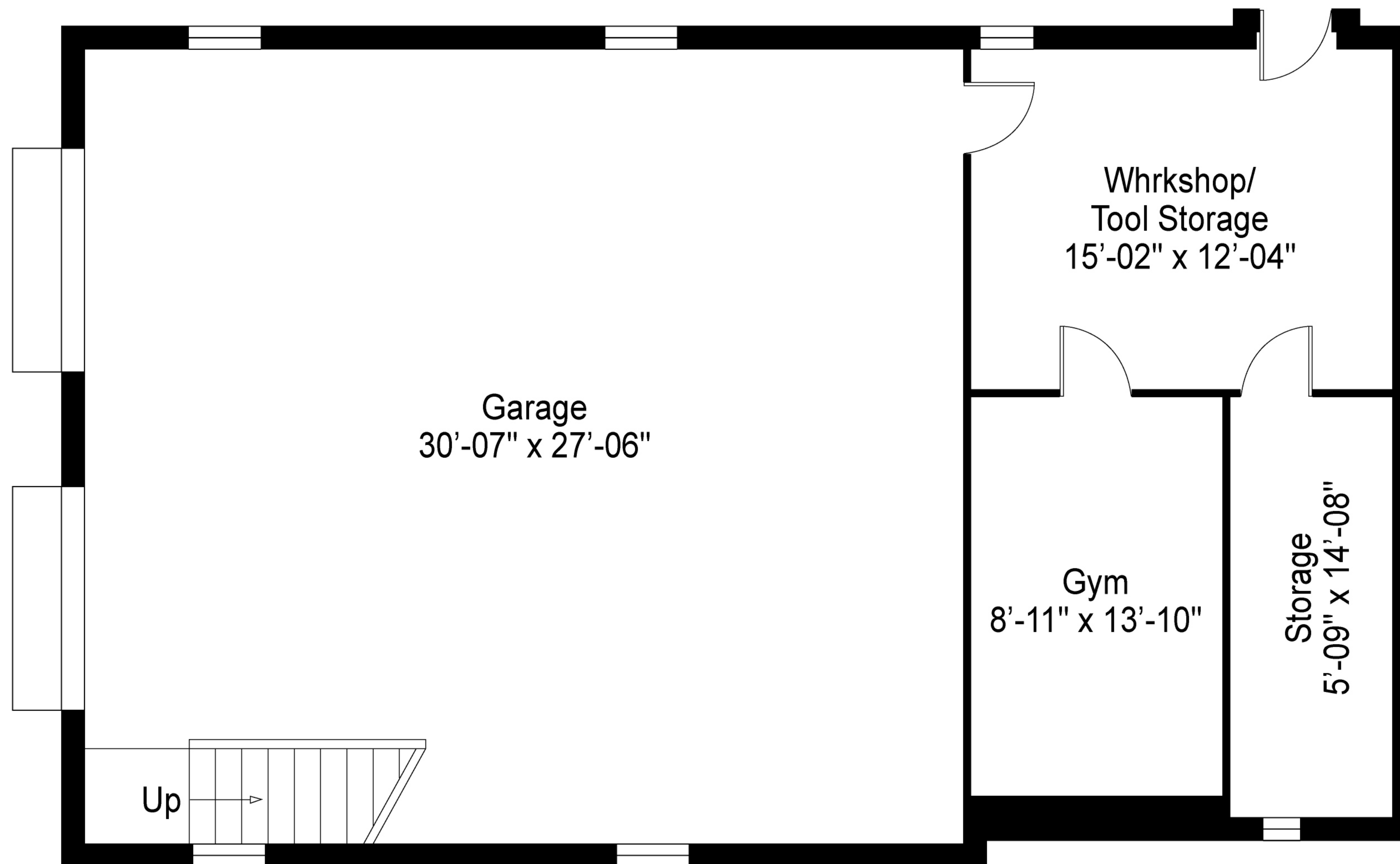


S E C O N D F L O O R

Floor plan, furniture, and fixture measurements and dimensions are approximate and are for illustrative purposes only. The representative gives no guarantee, warranty or representation as to the accuracy and completeness of the floor plan.

Second Floor 1,437 Sq.Ft.

20 Ludlow Lane, Hampton Bays, NY 11946



B A S E M E N T

Floor plan, furniture, and fixture measurements and dimensions are approximate and are for illustrative purposes only. The representative gives no guarantee, warranty or representation as to the accuracy and completeness of the floor plan.

Basement

1,271 Sq.Ft.

20 Ludlow Lane, Hampton Bays, NY 11946