

Home report

38w691 West Mary Lane, Rainbow Hills, St. Charles, Kane County, Illinois, United States, 60175



Total Area: 2966 sq. ft

Below Ground: 0 sq. ft, Floor 2: 1414 sq. ft, Floor 3: 1552 sq. ft

Excluded: Basement 231 sq. ft, Fireplace 14 sq. ft, Garage 791 sq. ft, Opentobelow 26 sq. ft, Walls: 266 sq. ft

Property summary

 **3** Floors

 **3** Bedrooms

 **2** Bathrooms

Home report

**38w691 West Mary Lane, Rainbow Hills, St. Charles, Kane  
County, Illinois, United States, 60175**



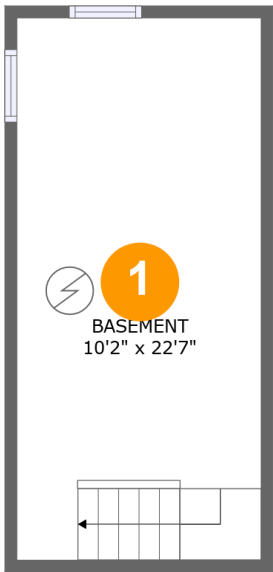
**1**  
Half baths



**1**  
Garages

Home report

38w691 West Mary Lane, Rainbow Hills, St. Charles, Kane  
County, Illinois, United States, 60175



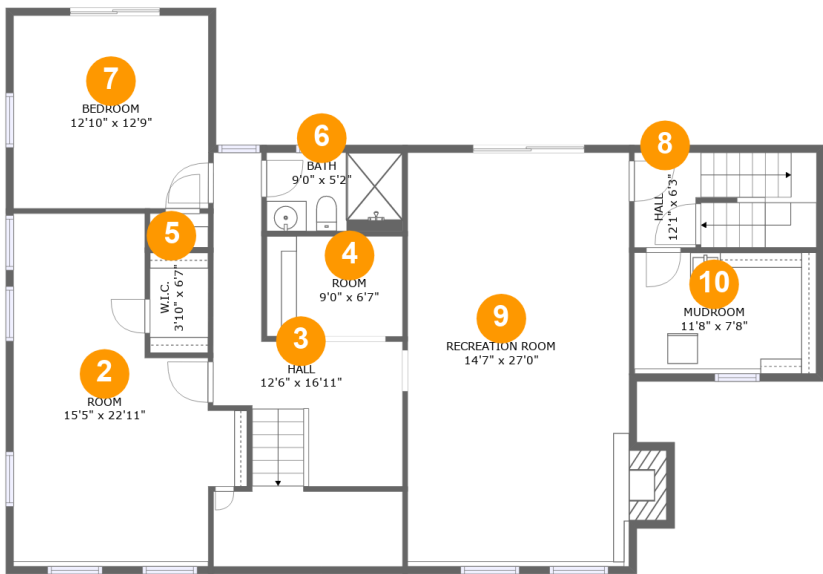
Room dimensions

Floor 1 Below ground Total:0sqft   Excluded: 231sqft

#		Max Dimensions	sqft	Included
1	Basement	10'2" x 22'7"	231 sq. ft	No

Home report

38w691 West Mary Lane, Rainbow Hills, St. Charles, Kane  
County, Illinois, United States, 60175



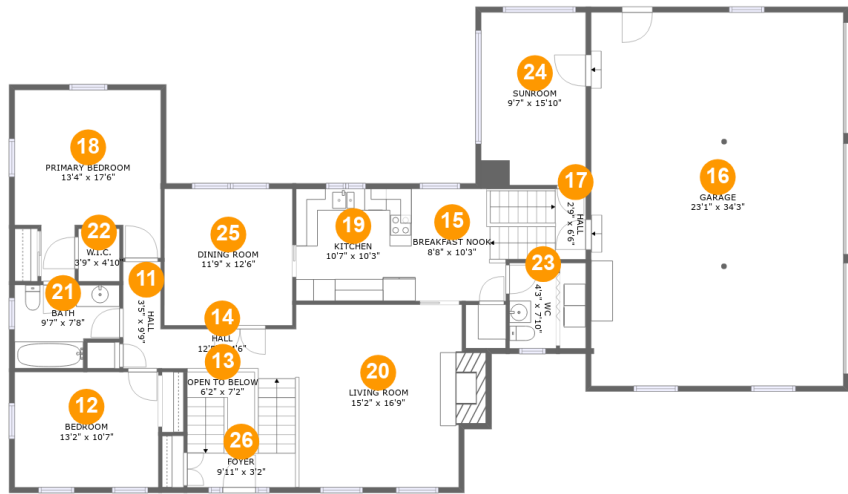
Room dimensions

Floor 2 Total:1414sqft    Excluded: 14sqft

#		Max Dimensions	sqft	Included
2	Room	15'5" x 22'11"	273 sq. ft	Yes
3	Hall	12'6" x 16'11"	148 sq. ft	Yes
4	Room	9'0" x 6'7"	60 sq. ft	Yes
5	W.I.C.	3'10" x 6'7"	26 sq. ft	Yes
6	Bath	9'0" x 5'2"	47 sq. ft	Yes
7	Bedroom	12'10" x 12'9"	164 sq. ft	Yes
8	Hall	12'1" x 6'3"	74 sq. ft	Yes
9	Recreation Room	14'7" x 27'0"	412 sq. ft	Yes
10	Mudroom	11'8" x 7'8"	96 sq. ft	Yes

Home report

38w691 West Mary Lane, Rainbow Hills, St. Charles, Kane  
County, Illinois, United States, 60175



Room dimensions

Floor 3 Total:1552sqft Excluded: 817sqft

#		Max Dimensions	sqft	Included
11	Hall	3'5" x 9'9"	34 sq. ft	Yes
12	Bedroom	13'2" x 10'7"	139 sq. ft	Yes
13	Open To Below	6'2" x 7'2"	26 sq. ft	No
14	Hall	12'5" x 4'6"	68 sq. ft	Yes
15	Breakfast Nook	8'8" x 10'3"	89 sq. ft	Yes
16	Garage	23'1" x 34'3"	791 sq. ft	No
17	Hall	2'9" x 6'6"	47 sq. ft	Yes
18	Primary Bedroom	13'4" x 17'6"	192 sq. ft	Yes
19	Kitchen	10'7" x 10'3"	109 sq. ft	Yes
20	Living Room	15'2" x 16'9"	266 sq. ft	Yes
21	Bath	9'7" x 7'8"	64 sq. ft	Yes

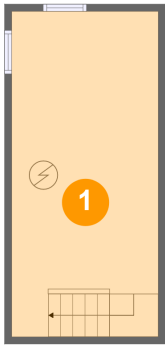
## Home report

**38w691 West Mary Lane, Rainbow Hills, St. Charles, Kane County, Illinois, United States, 60175**

#		Max Dimensions	sqft	Included
22	W.I.C.	3'9" x 4'10"	18 sq. ft	Yes
23	WC	4'3" x 7'10"	33 sq. ft	Yes
24	Sunroom	9'7" x 15'10"	152 sq. ft	Yes
25	Dining Room	11'9" x 12'6"	147 sq. ft	Yes
26	Foyer	9'11" x 3'2"	50 sq. ft	Yes

38w691 West Mary Lane, Rainbow Hills, St. Charles, Kane  
County, Illinois, United States, 60175

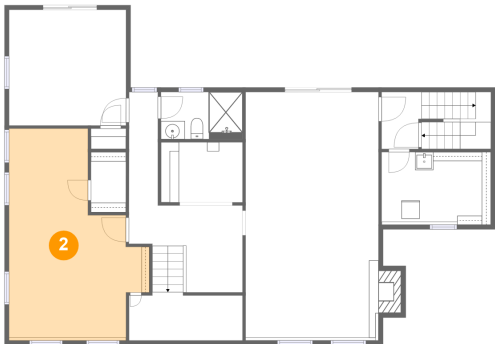
1 Floor 1 - Basement



Max Dimensions: 10'2" x 22'7"  
Calculated Area: 231 sq. ft  
Included: No

Heated: Yes  
Finished: No  
Enclosed: Yes  
Contiguous: Yes  
Permitted: Yes  
Wet space: No  
Addition: No  
Conversion: No

2 Floor 2 - Room



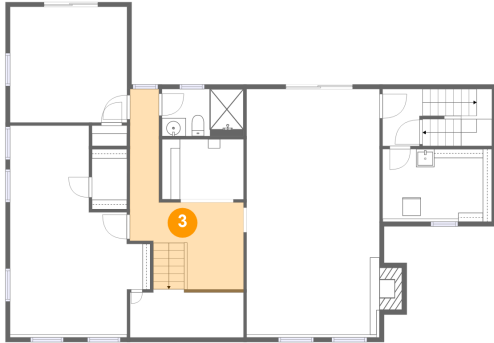
Max Dimensions: 15'5" x 22'11"  
Calculated Area: 273 sq. ft  
Included: Yes

Heated: Yes  
Finished: Yes  
Enclosed: Yes  
Contiguous: Yes  
Permitted: Yes  
Wet space: No  
Addition: No  
Conversion: No

## Home report

38w691 West Mary Lane, Rainbow Hills, St. Charles, Kane  
County, Illinois, United States, 60175

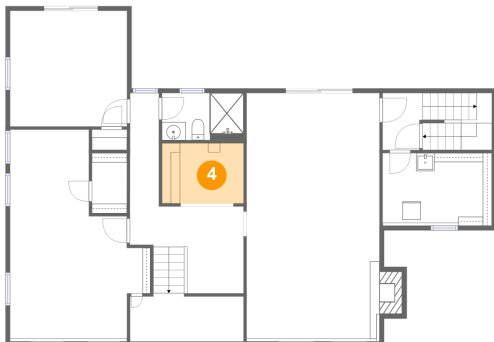
### 3 Floor 2 - Hall



Max Dimensions: 12'6" x 16'11"  
Calculated Area: 148 sq. ft  
Included: Yes

Heated: Yes  
Finished: Yes  
Enclosed: Yes  
Contiguous: Yes  
Permitted: Yes  
Wet space: No  
Addition: No  
Conversion: No

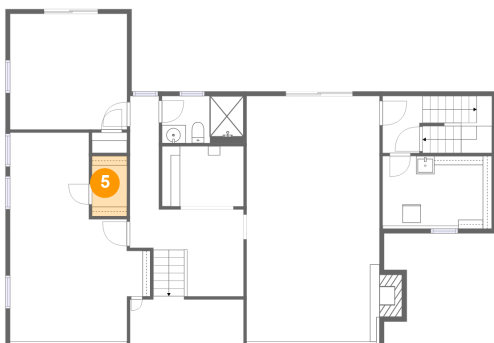
### 4 Floor 2 - Room



Max Dimensions: 9'0" x 6'7"  
Calculated Area: 60 sq. ft  
Included: Yes

Heated: Yes  
Finished: Yes  
Enclosed: Yes  
Contiguous: Yes  
Permitted: Yes  
Wet space: No  
Addition: No  
Conversion: No

### 5 Floor 2 - W.I.C.



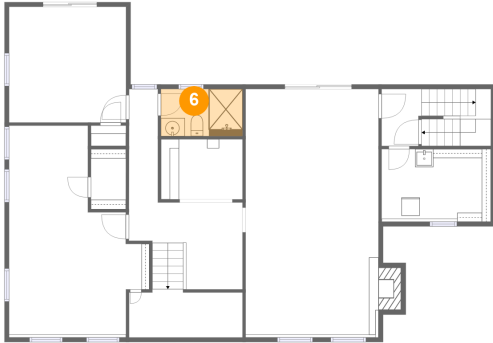
Max Dimensions: 3'10" x 6'7"  
Calculated Area: 26 sq. ft  
Included: Yes

Heated: Yes  
Finished: Yes  
Enclosed: Yes  
Contiguous: Yes  
Permitted: Yes  
Wet space: No  
Addition: No  
Conversion: No



38w691 West Mary Lane, Rainbow Hills, St. Charles, Kane  
County, Illinois, United States, 60175

## 6 Floor 2 - Bath



Max Dimensions: 9'0" x 5'2"  
Calculated Area: 47 sq. ft  
Included: Yes

Heated: Yes  
Finished: Yes  
Enclosed: Yes  
Contiguous: Yes  
Permitted: Yes  
Wet space: Yes  
Addition: No  
Conversion: No

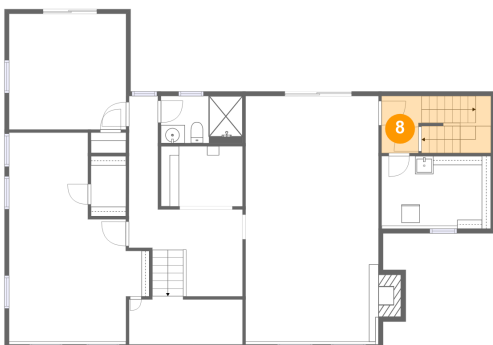
## 7 Floor 2 - Bedroom



Max Dimensions: 12'10" x 12'9"  
Calculated Area: 164 sq. ft  
Included: Yes

Heated: Yes  
Finished: Yes  
Enclosed: Yes  
Contiguous: Yes  
Permitted: Yes  
Wet space: No  
Addition: No  
Conversion: No

## 8 Floor 2 - Hall

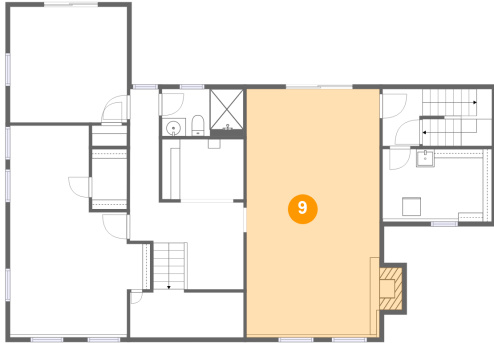


Max Dimensions: 12'1" x 6'3"  
Calculated Area: 74 sq. ft  
Included: Yes

Heated: Yes  
Finished: Yes  
Enclosed: Yes  
Contiguous: Yes  
Permitted: Yes  
Wet space: No  
Addition: No  
Conversion: No

38w691 West Mary Lane, Rainbow Hills, St. Charles, Kane  
County, Illinois, United States, 60175

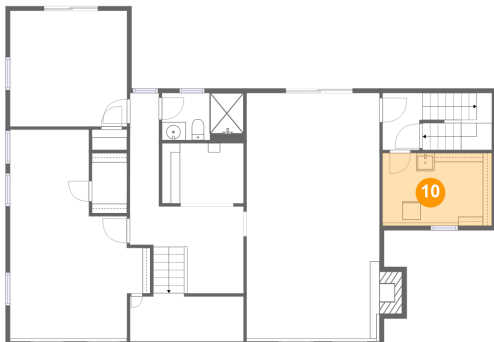
## 9 Floor 2 - Recreation Room



Max Dimensions: 14'7" x 27'0"  
Calculated Area: 412 sq. ft  
Included: Yes

Heated: Yes  
Finished: Yes  
Enclosed: Yes  
Contiguous: Yes  
Permitted: Yes  
Wet space: No  
Addition: No  
Conversion: No

## 10 Floor 2 - Mudroom



Max Dimensions: 11'8" x 7'8"  
Calculated Area: 96 sq. ft  
Included: Yes

Heated: Yes  
Finished: Yes  
Enclosed: Yes  
Contiguous: Yes  
Permitted: Yes  
Wet space: No  
Addition: No  
Conversion: No

## 11 Floor 3 - Hall



Max Dimensions: 3'5" x 9'9"  
Calculated Area: 34 sq. ft  
Included: Yes

Heated: Yes  
Finished: Yes  
Enclosed: Yes  
Contiguous: Yes  
Permitted: Yes  
Wet space: No  
Addition: No  
Conversion: No

## Home report

38w691 West Mary Lane, Rainbow Hills, St. Charles, Kane  
County, Illinois, United States, 60175

### 12 Floor 3 - Bedroom

---

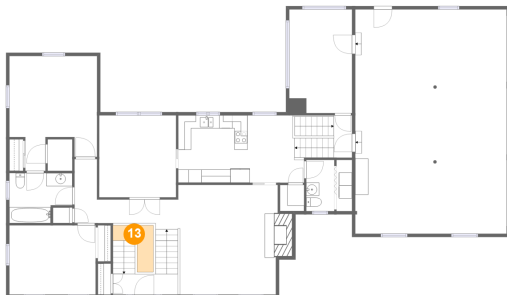


Max Dimensions: 13'2" x 10'7"  
Calculated Area: 139 sq. ft  
Included: Yes

Heated: Yes  
Finished: Yes  
Enclosed: Yes  
Contiguous: Yes  
Permitted: Yes  
Wet space: No  
Addition: No  
Conversion: No

### 13 Floor 3 - Open To Below

---



Max Dimensions: 6'2" x 7'2"  
Calculated Area: 26 sq. ft  
Included: No

Heated: No  
Finished: No  
Enclosed: No  
Contiguous: Yes  
Permitted: No  
Wet space: No  
Addition: No  
Conversion: No

### 14 Floor 3 - Hall

---

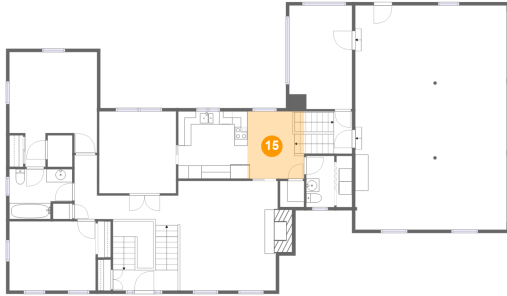


Max Dimensions: 12'5" x 4'6"  
Calculated Area: 68 sq. ft  
Included: Yes

Heated: Yes  
Finished: Yes  
Enclosed: Yes  
Contiguous: Yes  
Permitted: Yes  
Wet space: No  
Addition: No  
Conversion: No

38w691 West Mary Lane, Rainbow Hills, St. Charles, Kane  
County, Illinois, United States, 60175

### 15 Floor 3 - Breakfast Nook



Max Dimensions: 8'8" x 10'3"  
Calculated Area: 89 sq. ft  
Included: Yes

Heated: Yes  
Finished: Yes  
Enclosed: Yes  
Contiguous: Yes  
Permitted: Yes  
Wet space: No  
Addition: No  
Conversion: No

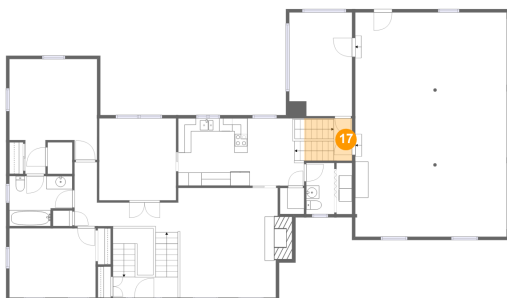
### 16 Floor 3 - Garage



Max Dimensions: 23'1" x 34'3"  
Calculated Area: 791 sq. ft  
Included: No

Heated: No  
Finished: No  
Enclosed: Yes  
Contiguous: Yes  
Permitted: Yes  
Wet space: No  
Addition: No  
Conversion: No

### 17 Floor 3 - Hall



Max Dimensions: 2'9" x 6'6"  
Calculated Area: 47 sq. ft  
Included: Yes

Heated: Yes  
Finished: Yes  
Enclosed: Yes  
Contiguous: Yes  
Permitted: Yes  
Wet space: No  
Addition: No  
Conversion: No

38w691 West Mary Lane, Rainbow Hills, St. Charles, Kane  
County, Illinois, United States, 60175

### 18 Floor 3 - Primary Bedroom



Max Dimensions: 13'4" x 17'6"  
Calculated Area: 192 sq. ft  
Included: Yes

Heated: Yes  
Finished: Yes  
Enclosed: Yes  
Contiguous: Yes  
Permitted: Yes  
Wet space: No  
Addition: No  
Conversion: No

### 19 Floor 3 - Kitchen



Max Dimensions: 10'7" x 10'3"  
Calculated Area: 109 sq. ft  
Included: Yes

Heated: Yes  
Finished: Yes  
Enclosed: Yes  
Contiguous: Yes  
Permitted: Yes  
Wet space: No  
Addition: No  
Conversion: No

### 20 Floor 3 - Living Room



Max Dimensions: 15'2" x 16'9"  
Calculated Area: 266 sq. ft  
Included: Yes

Heated: Yes  
Finished: Yes  
Enclosed: Yes  
Contiguous: Yes  
Permitted: Yes  
Wet space: No  
Addition: No  
Conversion: No

38w691 West Mary Lane, Rainbow Hills, St. Charles, Kane  
County, Illinois, United States, 60175

### 21 Floor 3 - Bath



Max Dimensions: 9'7" x 7'8"  
Calculated Area: 64 sq. ft  
Included: Yes

Heated: Yes  
Finished: Yes  
Enclosed: Yes  
Contiguous: Yes  
Permitted: Yes  
Wet space: Yes  
Addition: No  
Conversion: No

### 22 Floor 3 - W.I.C.



Max Dimensions: 3'9" x  
4'10"  
Calculated Area: 18 sq. ft  
Included: Yes

Heated: Yes  
Finished: Yes  
Enclosed: Yes  
Contiguous:  
Yes  
Permitted: Yes  
Wet space: No  
Addition: No  
Conversion: No

### 23 Floor 3 - WC



Max Dimensions: 4'3" x  
7'10"  
Calculated Area: 33 sq. ft  
Included: Yes

Heated: Yes  
Finished: Yes  
Enclosed: Yes  
Contiguous:  
Yes  
Permitted: Yes  
Wet space: No  
Addition: No  
Conversion: No

## Home report

**38w691 West Mary Lane, Rainbow Hills, St. Charles, Kane  
County, Illinois, United States, 60175**

### **24** Floor 3 - Sunroom



**Max Dimensions:** 9'7" x 15'10"  
**Calculated Area:** 152 sq. ft  
**Included:** Yes

**Heated:** Yes  
**Finished:** Yes  
**Enclosed:** Yes  
**Contiguous:** Yes  
**Permitted:** Yes  
**Wet space:** No  
**Addition:** No  
**Conversion:** No

### **25** Floor 3 - Dining Room



**Max Dimensions:** 11'9" x 12'6"  
**Calculated Area:** 147 sq. ft  
**Included:** Yes

**Heated:** Yes  
**Finished:** Yes  
**Enclosed:** Yes  
**Contiguous:** Yes  
**Permitted:** Yes  
**Wet space:** No  
**Addition:** No  
**Conversion:** No

### **26** Floor 3 - Foyer



**Max Dimensions:** 9'11" x 3'2"  
**Calculated Area:** 50 sq. ft  
**Included:** Yes

**Heated:** Yes  
**Finished:** Yes  
**Enclosed:** Yes  
**Contiguous:** Yes  
**Permitted:** Yes  
**Wet space:** No  
**Addition:** No  
**Conversion:** No