



6976 South Shore Drive South, South Pasadena, Pinellas County, Florida, United States, 33707



Property summary

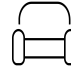
 **2** Garages

 **4** Bedrooms

 **3** Bathrooms

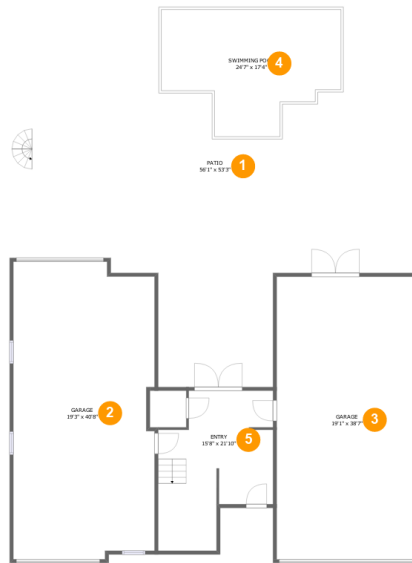
 **1** Half baths

 **3** Floors

 **3,660** Gross living area sqft

 **8,506** Total sqft

6976 South Shore Drive South, South Pasadena, Pinellas County, Florida, United States, 33707



Room dimensions

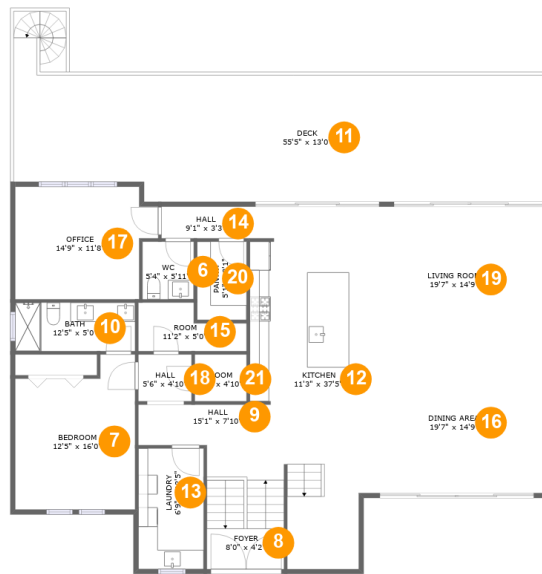
Floor 1

Total sqft: 3647

Living area: 0

#		Dimensions	sqft	Counted as living area
1	Patio	56'1" x 53'3"	2047 sq. ft	No
2	Garage	19'3" x 40'8"	756 sq. ft	No
3	Garage	19'1" x 38'7"	738 sq. ft	No
4	Swimming Pool	24'7" x 17'4"	335 sq. ft	No
5	Entry	15'8" x 21'10"	269 sq. ft	No

6976 South Shore Drive South, South Pasadena, Pinellas County, Florida, United States, 33707



Room dimensions

Floor 2

Total sqft: 2683

Living area: 1952

#		Dimensions	sqft	Counted as living area
6	WC	5'4" x 5'11"	32 sq. ft	Yes
7	Bedroom	12'5" x 16'0"	176 sq. ft	Yes
8	Foyer	8'0" x 4'2"	33 sq. ft	Yes
9	Hall	15'1" x 7'10"	132 sq. ft	Yes
10	Bath	12'5" x 5'0"	62 sq. ft	Yes
11	Deck	55'5" x 13'0"	731 sq. ft	No
12	Kitchen	11'3" x 37'5"	356 sq. ft	Yes
13	Laundry	6'9" x 12'5"	84 sq. ft	Yes
14	Hall	9'1" x 3'3"	30 sq. ft	Yes
15	Room	11'2" x 5'0"	44 sq. ft	Yes
16	Dining Area	19'7" x 14'9"	290 sq. ft	Yes

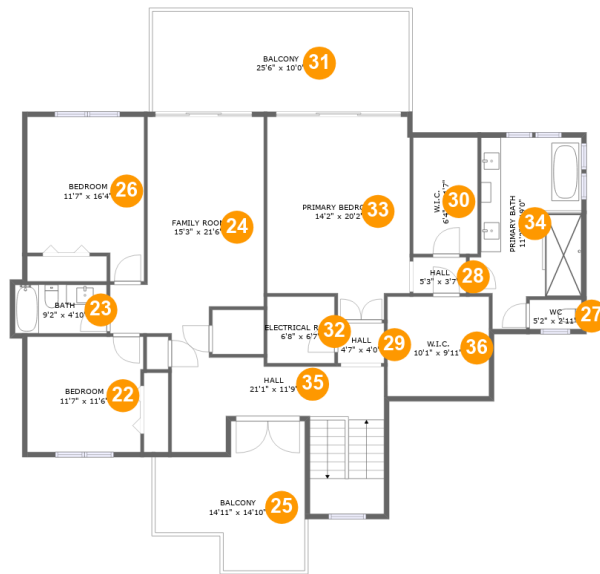
Scan captured on Mon, 03 Mar 2025 01:26:24 GMT

Information is calculated by Cubicasa technology deemed highly reliable but not guaranteed.

**6976 South Shore Drive South, South Pasadena,
Pinellas County, Florida, United States, 33707**

#		Dimensions	sqft	Counted as living area
17	Office	14'9" x 11'8"	155 sq. ft	Yes
18	Hall	5'6" x 4'10"	27 sq. ft	Yes
19	Living Room	19'7" x 14'9"	290 sq. ft	Yes
20	Pantry	5'1" x 8'1"	41 sq. ft	Yes
21	Room	5'4" x 4'10"	26 sq. ft	Yes

6976 South Shore Drive South, South Pasadena, Pinellas County, Florida, United States, 33707



Room dimensions

Floor 3

Total sqft: 2176 Living area: 1708

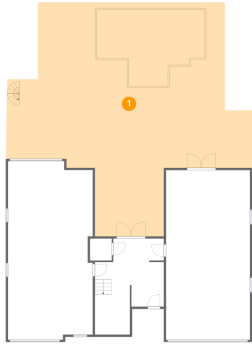
#		Dimensions	sqft	Counted as living area
22	Bedroom	11'7" x 11'6"	130 sq. ft	Yes
23	Bath	9'2" x 4'10"	44 sq. ft	Yes
24	Family Room	15'3" x 21'6"	253 sq. ft	Yes
25	Balcony	14'11" x 14'10"	169 sq. ft	No
26	Bedroom	11'7" x 16'4"	167 sq. ft	Yes
27	WC	5'2" x 2'11"	15 sq. ft	Yes
28	Hall	5'3" x 3'7"	19 sq. ft	Yes
29	Hall	4'7" x 4'0"	18 sq. ft	Yes
30	W.I.C.	6'4" x 11'7"	74 sq. ft	Yes
31	Balcony	25'6" x 10'0"	255 sq. ft	No
32	Electrical Room	6'8" x 6'7"	44 sq. ft	No

**6976 South Shore Drive South, South Pasadena,
Pinellas County, Florida, United States, 33707**

#		Dimensions	sqft	Counted as living area
33	Primary Bedroom	14'2" x 20'2"	260 sq. ft	Yes
34	Primary Bath	11'2" x 19'0"	173 sq. ft	Yes
35	Hall	21'1" x 11'9"	212 sq. ft	Yes
36	W.I.C.	10'1" x 9'11"	100 sq. ft	Yes

6976 South Shore Drive South, South Pasadena, Pinellas County, Florida, United States, 33707

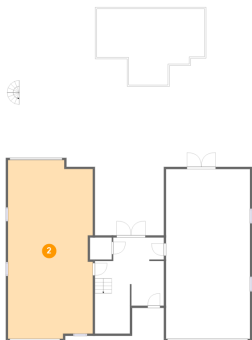
1 Floor 1 - Patio



Dimensions: 56'1" x 53'3"
Area: 2047 sq. ft
Counted as living area: No

Heated: No
Finished: Yes
Enclosed: No
Contiguous: Yes
Permitted: Yes
Wet space: No
Addition: No
Conversion: No

2 Floor 1 - Garage

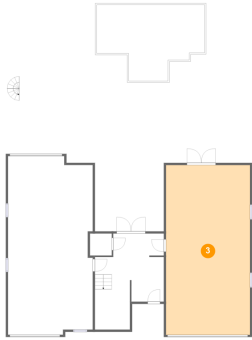


Dimensions: 19'3" x 40'8"
Area: 756 sq. ft
Counted as living area: No

Heated: No
Finished: No
Enclosed: Yes
Contiguous: Yes
Permitted: Yes
Wet space: No
Addition: No
Conversion: No

6976 South Shore Drive South, South Pasadena, Pinellas County, Florida, United States, 33707

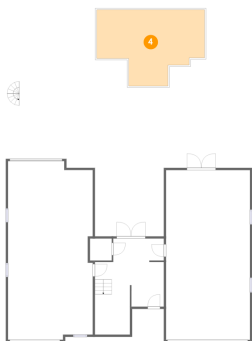
3 Floor 1 - Garage



Dimensions: 19'1" x 38'7"
Area: 738 sq. ft
Counted as living area: No

Heated: No
Finished: No
Enclosed: Yes
Contiguous: Yes
Permitted: Yes
Wet space: No
Addition: No
Conversion: No

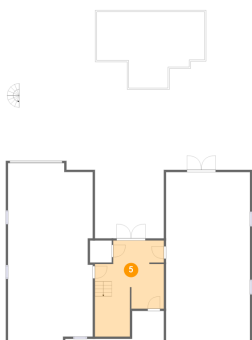
4 Floor 1 - Swimming Pool



Dimensions: 24'7" x 17'4"
Area: 335 sq. ft
Counted as living area: No

Heated: No
Finished: No
Enclosed: No
Contiguous: Yes
Permitted: No
Wet space: No
Addition: No
Conversion: No

5 Floor 1 - Entry



Dimensions: 15'8" x 21'10"
Area: 269 sq. ft
Counted as living area: No

Heated: Yes
Finished: Yes
Enclosed: Yes
Contiguous: No
Permitted: Yes
Wet space: No
Addition: No
Conversion: No

**6976 South Shore Drive South, South Pasadena,
Pinellas County, Florida, United States, 33707**

6 Floor 2 - WC



Dimensions: 5'4" x 5'11"
Area: 32 sq. ft
Counted as living area: Yes

Heated: Yes
Finished: Yes
Enclosed: Yes
Contiguous: Yes
Permitted: Yes
Wet space: Yes
Addition: No
Conversion: No

7 Floor 2 - Bedroom



Dimensions: 12'5" x 16'0"
Area: 176 sq. ft
Counted as living area: Yes

Heated: Yes
Finished: Yes
Enclosed: Yes
Contiguous: Yes
Permitted: Yes
Wet space: No
Addition: No
Conversion: No

8 Floor 2 - Foyer

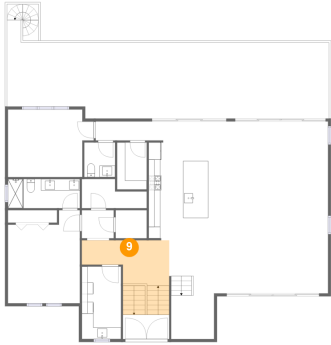


Dimensions: 8'0" x 4'2"
Area: 33 sq. ft
Counted as living area: Yes

Heated: Yes
Finished: Yes
Enclosed: Yes
Contiguous: Yes
Permitted: Yes
Wet space: No
Addition: No
Conversion: No

6976 South Shore Drive South, South Pasadena, Pinellas County, Florida, United States, 33707

9 Floor 2 - Hall



Dimensions: 15'1" x 7'10"
Area: 132 sq. ft
Counted as living area: Yes

Heated: Yes
Finished: Yes
Enclosed: Yes
Contiguous: Yes
Permitted: Yes
Wet space: No
Addition: No
Conversion: No

10 Floor 2 - Bath



Dimensions: 12'5" x 5'0"
Area: 62 sq. ft
Counted as living area: Yes

Heated: Yes
Finished: Yes
Enclosed: Yes
Contiguous: Yes
Permitted: Yes
Wet space: Yes
Addition: No
Conversion: No

11 Floor 2 - Deck



Dimensions: 55'5" x 13'0"
Area: 731 sq. ft
Counted as living area: No

Heated: No
Finished: Yes
Enclosed: No
Contiguous: Yes
Permitted: Yes
Wet space: No
Addition: No
Conversion: No

6976 South Shore Drive South, South Pasadena, Pinellas County, Florida, United States, 33707

12 Floor 2 - Kitchen



Dimensions: 11'3" x 37'5"
Area: 356 sq. ft
Counted as living area: Yes

Heated: Yes
Finished: Yes
Enclosed: Yes
Contiguous: Yes
Permitted: Yes
Wet space: No
Addition: No
Conversion: No

13 Floor 2 - Laundry



Dimensions: 6'9" x 12'5"
Area: 84 sq. ft
Counted as living area: Yes

Heated: Yes
Finished: Yes
Enclosed: Yes
Contiguous: Yes
Permitted: Yes
Wet space: No
Addition: No
Conversion: No

14 Floor 2 - Hall

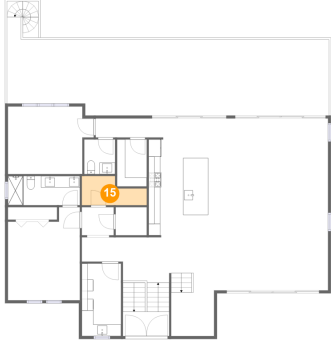


Dimensions: 9'1" x 3'3"
Area: 30 sq. ft
Counted as living area: Yes

Heated: Yes
Finished: Yes
Enclosed: Yes
Contiguous: Yes
Permitted: Yes
Wet space: No
Addition: No
Conversion: No

**6976 South Shore Drive South, South Pasadena,
Pinellas County, Florida, United States, 33707**

15 Floor 2 - Room



Dimensions: 11'2" x 5'0"
Area: 44 sq. ft
Counted as living area: Yes

Heated: Yes
Finished: Yes
Enclosed: Yes
Contiguous: Yes
Permitted: Yes
Wet space: No
Addition: No
Conversion: No

16 Floor 2 - Dining Area



Dimensions: 19'7" x 14'9"
Area: 290 sq. ft
Counted as living area: Yes

Heated: Yes
Finished: Yes
Enclosed: Yes
Contiguous: Yes
Permitted: Yes
Wet space: No
Addition: No
Conversion: No

17 Floor 2 - Office



Dimensions: 14'9" x 11'8"
Area: 155 sq. ft
Counted as living area: Yes

Heated: Yes
Finished: Yes
Enclosed: Yes
Contiguous: Yes
Permitted: Yes
Wet space: No
Addition: No
Conversion: No

**6976 South Shore Drive South, South Pasadena,
Pinellas County, Florida, United States, 33707**

18 Floor 2 - Hall



Dimensions: 5'6" x 4'10"
Area: 27 sq. ft
Counted as living area: Yes

Heated: Yes
Finished: Yes
Enclosed: Yes
Contiguous: Yes
Permitted: Yes
Wet space: No
Addition: No
Conversion: No

19 Floor 2 - Living Room



Dimensions: 19'7" x 14'9"
Area: 290 sq. ft
Counted as living area: Yes

Heated: Yes
Finished: Yes
Enclosed: Yes
Contiguous: Yes
Permitted: Yes
Wet space: No
Addition: No
Conversion: No

20 Floor 2 - Pantry



Dimensions: 5'1" x 8'1"
Area: 41 sq. ft
Counted as living area: Yes

Heated: Yes
Finished: Yes
Enclosed: Yes
Contiguous: Yes
Permitted: Yes
Wet space: No
Addition: No
Conversion: No

**6976 South Shore Drive South, South Pasadena,
Pinellas County, Florida, United States, 33707**

21 Floor 2 - Room



Dimensions: 5'4" x 4'10"
Area: 26 sq. ft
Counted as living area: Yes

Heated: Yes
Finished: Yes
Enclosed: Yes
Contiguous: Yes
Permitted: Yes
Wet space: No
Addition: No
Conversion: No

22 Floor 3 - Bedroom



Dimensions: 11'7" x 11'6"
Area: 130 sq. ft
Counted as living area: Yes

Heated: Yes
Finished: Yes
Enclosed: Yes
Contiguous: Yes
Permitted: Yes
Wet space: No
Addition: No
Conversion: No

23 Floor 3 - Bath

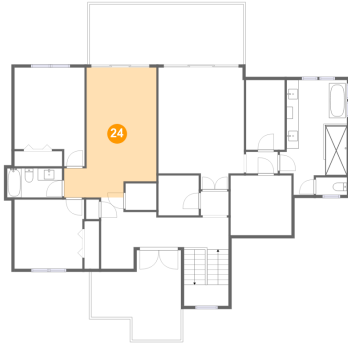


Dimensions: 9'2" x 4'10"
Area: 44 sq. ft
Counted as living area: Yes

Heated: Yes
Finished: Yes
Enclosed: Yes
Contiguous: Yes
Permitted: Yes
Wet space: Yes
Addition: No
Conversion: No

**6976 South Shore Drive South, South Pasadena,
Pinellas County, Florida, United States, 33707**

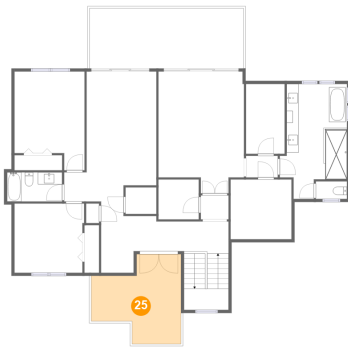
24 Floor 3 - Family Room



Dimensions: 15'3" x 21'6"
Area: 253 sq. ft
Counted as living area: Yes

Heated: Yes
Finished: Yes
Enclosed: Yes
Contiguous: Yes
Permitted: Yes
Wet space: No
Addition: No
Conversion: No

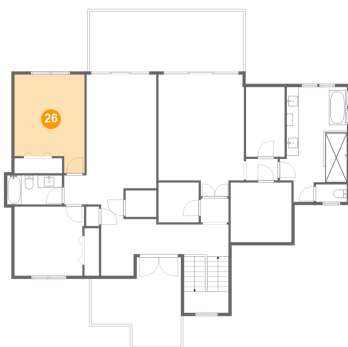
25 Floor 3 - Balcony



Dimensions: 14'11" x 14'10"
Area: 169 sq. ft
Counted as living area: No

Heated: No
Finished: Yes
Enclosed: No
Contiguous: Yes
Permitted: Yes
Wet space: No
Addition: No
Conversion: No

26 Floor 3 - Bedroom



Dimensions: 11'7" x 16'4"
Area: 167 sq. ft
Counted as living area: Yes

Heated: Yes
Finished: Yes
Enclosed: Yes
Contiguous: Yes
Permitted: Yes
Wet space: No
Addition: No
Conversion: No

**6976 South Shore Drive South, South Pasadena,
Pinellas County, Florida, United States, 33707**

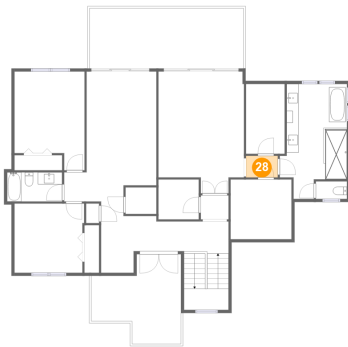
27 Floor 3 - WC



Dimensions: 5'2" x 2'11"
Area: 15 sq. ft
Counted as living area: Yes

Heated: Yes
Finished: Yes
Enclosed: Yes
Contiguous: Yes
Permitted: Yes
Wet space: Yes
Addition: No
Conversion: No

28 Floor 3 - Hall



Dimensions: 5'3" x 3'7"
Area: 19 sq. ft
Counted as living area: Yes

Heated: Yes
Finished: Yes
Enclosed: Yes
Contiguous: Yes
Permitted: Yes
Wet space: No
Addition: No
Conversion: No

29 Floor 3 - Hall

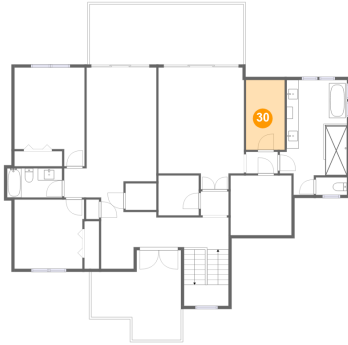


Dimensions: 4'7" x 4'0"
Area: 18 sq. ft
Counted as living area: Yes

Heated: Yes
Finished: Yes
Enclosed: Yes
Contiguous: Yes
Permitted: Yes
Wet space: No
Addition: No
Conversion: No

**6976 South Shore Drive South, South Pasadena,
Pinellas County, Florida, United States, 33707**

30 Floor 3 - W.I.C.



Dimensions: 6'4" x 11'7"
Area: 74 sq. ft
Counted as living area: Yes

Heated: Yes
Finished: Yes
Enclosed: Yes
Contiguous: Yes
Permitted: Yes
Wet space: No
Addition: No
Conversion: No

31 Floor 3 - Balcony



Dimensions: 25'6" x 10'0"
Area: 255 sq. ft
Counted as living area: No

Heated: No
Finished: Yes
Enclosed: No
Contiguous: Yes
Permitted: Yes
Wet space: No
Addition: No
Conversion: No

32 Floor 3 - Electrical Room

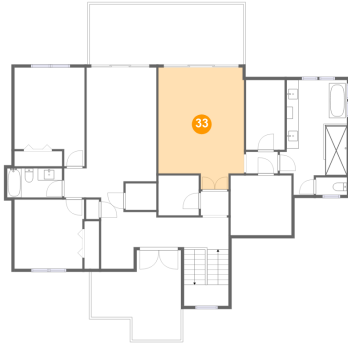


Dimensions: 6'8" x 6'7"
Area: 44 sq. ft
Counted as living area: No

Heated: No
Finished: No
Enclosed: Yes
Contiguous: Yes
Permitted: Yes
Wet space: No
Addition: No
Conversion: No

6976 South Shore Drive South, South Pasadena, Pinellas County, Florida, United States, 33707

33 Floor 3 - Primary Bedroom



Dimensions: 14'2" x 20'2"
Area: 260 sq. ft
Counted as living area: Yes

Heated: Yes
Finished: Yes
Enclosed: Yes
Contiguous: Yes
Permitted: Yes
Wet space: No
Addition: No
Conversion: No

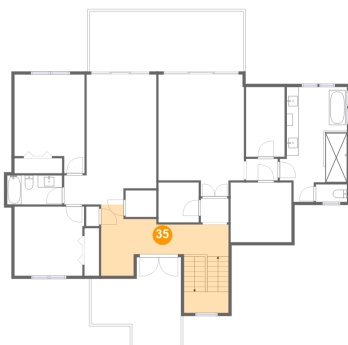
34 Floor 3 - Primary Bath



Dimensions: 11'2" x 19'0"
Area: 173 sq. ft
Counted as living area: Yes

Heated: Yes
Finished: Yes
Enclosed: Yes
Contiguous: Yes
Permitted: Yes
Wet space: Yes
Addition: No
Conversion: No

35 Floor 3 - Hall

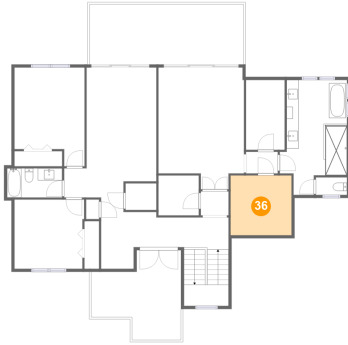


Dimensions: 21'1" x 11'9"
Area: 212 sq. ft
Counted as living area: Yes

Heated: Yes
Finished: Yes
Enclosed: Yes
Contiguous: Yes
Permitted: Yes
Wet space: No
Addition: No
Conversion: No

**6976 South Shore Drive South, South Pasadena,
Pinellas County, Florida, United States, 33707**

36 Floor 3 - W.I.C.



Dimensions: 10'1" x 9'11"
Area: 100 sq. ft
Counted as living area: Yes

Heated: Yes
Finished: Yes
Enclosed: Yes
Contiguous: Yes
Permitted: Yes
Wet space: No
Addition: No
Conversion: No