

TOTAL Sketch by a la mode

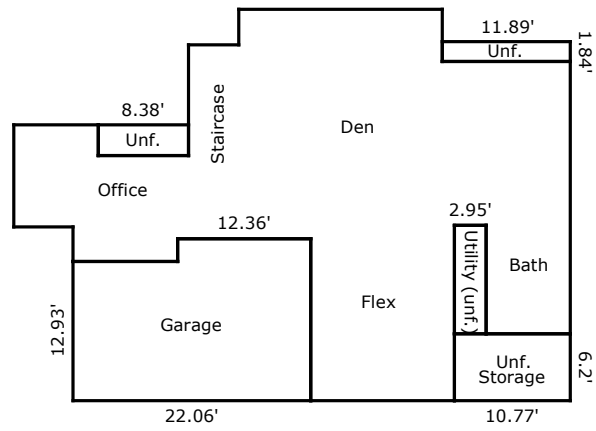
Area Calculations Summary

Living Area

Main Living Area	1828.08 Sq ft
Sunroom	214.16 Sq ft
Second Level	894.76 Sq ft
Total Living Area (Rounded):	2937 Sq ft

Non-living Area

Deck	74.27 Sq ft
Patio	225.48 Sq ft
Porch	521.13 Sq ft



TOTAL Sketch by a la mode

Area Calculations Summary

Living Area

Below Grade 1110.8 Sq ft
Total Living Area (Rounded): 1111 Sq ft

Non-living Area

Garage 311.19 Sq ft
 Storage 21.88 Sq ft
 Storage 66.77 Sq ft
 Storage 23.88 Sq ft
 Storage 29.71 Sq ft

Area Calculations Summary

Living Area		Calculation Details	
Main Living Area	1828.08 Sq ft	$18.89 \times 3.3 = 62.34$ $16.92 \times 5.52 = 93.4$ $34.32 \times 46.17 = 1584.55$ $0.19 \times 9.69 = 1.84$ $10.98 \times 5.82 = 63.91$ $5.82 \times 2.62 = 15.27$ $0.5 \times 2.62 \times 2.58 = 3.39$ $0.5 \times 2.58 \times 2.62 = 3.38$	
Sunroom	214.16 Sq ft	$11.24 \times 9.5 = 106.79$ $5.13 \times 20.93 = 107.37$	
Second Level	894.76 Sq ft	$4.53 \times 4.68 = 21.21$ $4.53 \times 4.68 = 21.21$ $4.53 \times 4.68 = 21.21$ $3.28 \times 5.92 = 19.42$ $18.57 \times 8.77 = 162.86$ $16.28 \times 16.44 = 267.64$ $15.92 \times 3.41 = 54.26$ $20.69 \times 14.75 = 305.18$ $1.5 \times 3.51 = 5.27$ $1.53 \times 8.32 = 12.73$ $2.51 \times 1.5 = 3.77$	
Below Grade	1110.8 Sq ft	$13.34 \times 15.03 = 200.5$ $7.82 \times 10.07 = 78.75$ $15.24 \times 10.77 = 164.13$ $9.47 \times 5.52 = 52.27$ $9.7 \times 2.1 = 20.37$ $10.57 \times 2.34 = 24.73$ $7.72 \times 8.38 = 64.69$ $24.68 \times 16.48 = 406.73$ $1.54 \times 4.67 = 7.19$ $18.89 \times 4.84 = 91.43$	
Total Living Area (Rounded):	4048 Sq ft		
Non-living Area			
Deck	74.27 Sq ft	$8.28 \times 7.94 = 65.75$ $2.58 \times 3.3 = 8.51$	
Patio	225.48 Sq ft	$6.7 \times 7.94 = 53.21$ $14.98 \times 11.5 = 172.27$	
Porch	521.13 Sq ft	$5.52 \times 17.4 = 96.05$ $5.82 \times 13.65 = 79.44$ $57.51 \times 6.01 = 345.64$	
Garage	311.19 Sq ft	$15.03 \times 12.36 = 185.77$ $12.93 \times 9.7 = 125.42$	
Storage	21.88 Sq ft	$1.84 \times 11.89 = 21.88$	
Storage	66.77 Sq ft	$10.77 \times 6.2 = 66.77$	
Storage	23.88 Sq ft	$2.85 \times 8.38 = 23.88$	
Storage	29.71 Sq ft	$10.07 \times 2.95 = 29.71$	