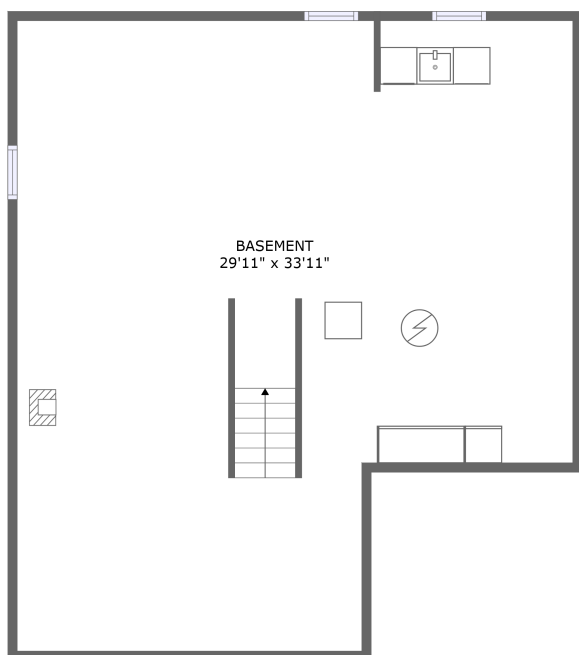
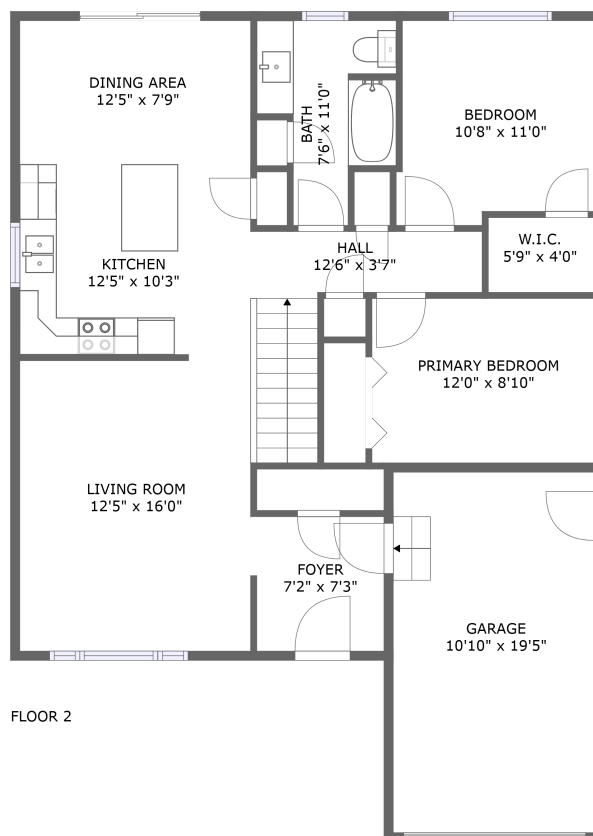


741 Bethune St, Peterborough, ON, CA



FLOOR 1



FLOOR 2

Property summary

 **1** Garages

 **2** Bedrooms

 **1** Bathrooms

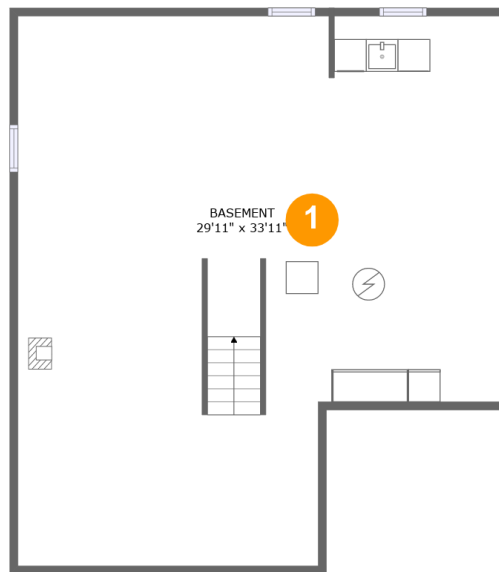
 **0** Half baths

 **2** Floors

 **1,002** Gross living area sqft

 **2,199** Total sqft

741 Bethune St, Peterborough, ON, CA

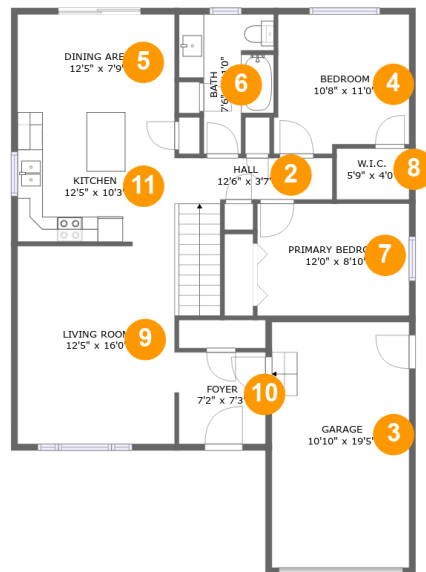


Room dimensions

Floor 1

Total sqft: 966 Living area: 0

#		Dimensions	sqft	Counted as living area
1	Basement	29'11" x 33'11"	900 sq. ft	No

741 Bethune St, Peterborough, ON, CA**Room dimensions**

Floor 2

Total sqft: 1233 Living area: 1002

#		Dimensions	sqft	Counted as living area
2	Hall	12'6" x 3'7"	74 sq. ft	Yes
3	Garage	10'10" x 19'5"	211 sq. ft	No
4	Bedroom	10'8" x 11'0"	111 sq. ft	Yes
5	Dining Area	12'5" x 7'9"	96 sq. ft	Yes
6	Bath	7'6" x 11'0"	62 sq. ft	Yes
7	Primary Bedroom	12'0" x 8'10"	106 sq. ft	Yes
8	W.I.C.	5'9" x 4'0"	23 sq. ft	Yes
9	Living Room	12'5" x 16'0"	196 sq. ft	Yes
10	Foyer	7'2" x 7'3"	51 sq. ft	Yes
11	Kitchen	12'5" x 10'3"	127 sq. ft	Yes

741 Bethune St, Peterborough, ON, CA

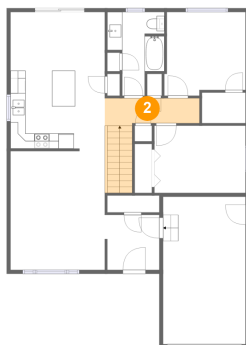
1 Floor 1 - Basement



Dimensions: 29'11" x 33'11"
Area: 900 sq. ft
Counted as living area: No

Heated: Yes
Finished: No
Enclosed: Yes
Contiguous: Yes
Permitted: Yes
Wet space: No
Addition: No
Conversion: No

2 Floor 2 - Hall

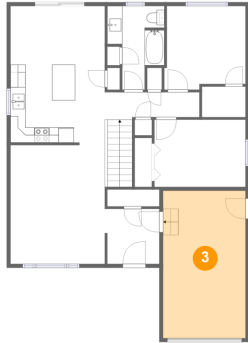


Dimensions: 12'6" x 3'7"
Area: 74 sq. ft
Counted as living area: Yes

Heated: Yes
Finished: Yes
Enclosed: Yes
Contiguous: Yes
Permitted: Yes
Wet space: No
Addition: No
Conversion: No

741 Bethune St, Peterborough, ON, CA

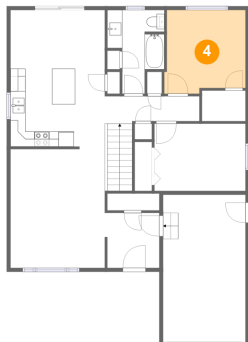
3 Floor 2 - Garage



Dimensions: 10'10" x 19'5"
Area: 211 sq. ft
Counted as living area: No

Heated: No
Finished: No
Enclosed: Yes
Contiguous: Yes
Permitted: Yes
Wet space: No
Addition: No
Conversion: No

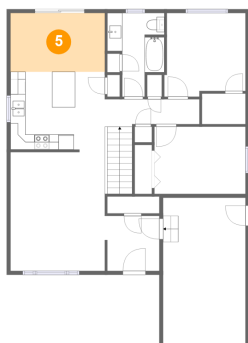
4 Floor 2 - Bedroom



Dimensions: 10'8" x 11'0"
Area: 111 sq. ft
Counted as living area: Yes

Heated: Yes
Finished: Yes
Enclosed: Yes
Contiguous: Yes
Permitted: Yes
Wet space: No
Addition: No
Conversion: No

5 Floor 2 - Dining Area

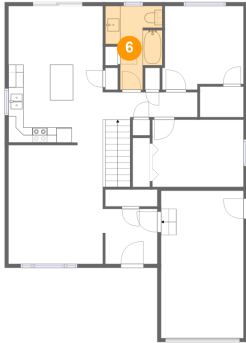


Dimensions: 12'5" x 7'9"
Area: 96 sq. ft
Counted as living area: Yes

Heated: Yes
Finished: Yes
Enclosed: Yes
Contiguous: Yes
Permitted: Yes
Wet space: No
Addition: No
Conversion: No

741 Bethune St, Peterborough, ON, CA

6 Floor 2 - Bath



Dimensions: 7'6" x 11'0"
Area: 62 sq. ft
Counted as living area: Yes

Heated: Yes
Finished: Yes
Enclosed: Yes
Contiguous: Yes
Permitted: Yes
Wet space: Yes
Addition: No
Conversion: No

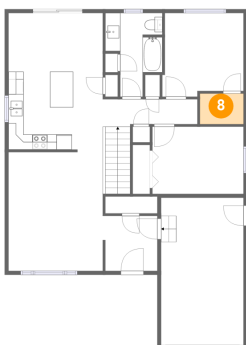
7 Floor 2 - Primary Bedroom



Dimensions: 12'0" x 8'10"
Area: 106 sq. ft
Counted as living area: Yes

Heated: Yes
Finished: Yes
Enclosed: Yes
Contiguous: Yes
Permitted: Yes
Wet space: No
Addition: No
Conversion: No

8 Floor 2 - W.I.C.

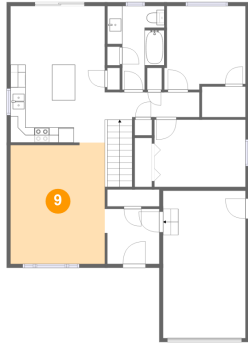


Dimensions: 5'9" x 4'0"
Area: 23 sq. ft
Counted as living area: Yes

Heated: Yes
Finished: Yes
Enclosed: Yes
Contiguous: Yes
Permitted: Yes
Wet space: No
Addition: No
Conversion: No

741 Bethune St, Peterborough, ON, CA

9 Floor 2 - Living Room



Dimensions: 12'5" x 16'0"
Area: 196 sq. ft
Counted as living area: Yes

Heated: Yes
Finished: Yes
Enclosed: Yes
Contiguous: Yes
Permitted: Yes
Wet space: No
Addition: No
Conversion: No

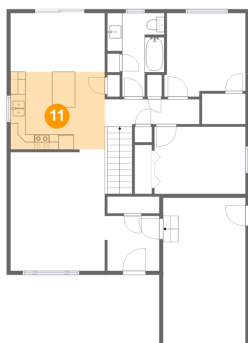
10 Floor 2 - Foyer



Dimensions: 7'2" x 7'3"
Area: 51 sq. ft
Counted as living area: Yes

Heated: Yes
Finished: Yes
Enclosed: Yes
Contiguous: Yes
Permitted: Yes
Wet space: No
Addition: No
Conversion: No

11 Floor 2 - Kitchen



Dimensions: 12'5" x 10'3"
Area: 127 sq. ft
Counted as living area: Yes

Heated: Yes
Finished: Yes
Enclosed: Yes
Contiguous: Yes
Permitted: Yes
Wet space: No
Addition: No
Conversion: No