

1706 West Hills Avenue, Historic Hyde Park, Tampa, Hillsborough County, Florida, United



Property Summary



2 floors



5 bedrooms



3 bathrooms



4,711 total sqft



0 garages



3,106 Gross Living Area sqft

1706 West Hills Avenue, Historic Hyde Park, Tampa, Hillsborough County, Florida, United



Room Dimensions

Floor 1

Total sqft: 2972

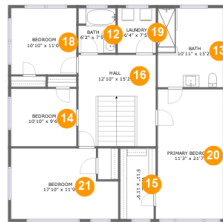
Living area: 1427

#	Room name	Dimensions	Area (sqft)	Counted as Living Area
1	Wc	9'6" x 6'10"	51 sq. ft	Yes
2	Family Room	14'5" x 20'6"	291 sq. ft	Yes
3	Swimming Pool	19'1" x 12'4"	236 sq. ft	No
4	Foyer	6'6" x 5'3"	76 sq. ft	Yes
5	Living Room	14'4" x 20'7"	294 sq. ft	Yes
6	Kitchen	14'3" x 11'3"	160 sq. ft	Yes
7	Dining Room	11'0" x 14'2"	156 sq. ft	Yes
8	Storage	19'4" x 17'4"	334 sq. ft	No
9	Sitting Room	12'9" x 11'4"	134 sq. ft	Yes
10	Breakfast Nook	9'8" x 14'2"	135 sq. ft	Yes
11	Patio	43'4" x 39'8"	1409 sq. ft	No

Scan captured on Fri, 31 May 2024 18:47:09 GMT

Information is calculated by CubiCasa technology; deemed highly reliable but not guaranteed.

1706 West Hills Avenue, Historic Hyde Park, Tampa, Hillsborough County, Florida, United



Room Dimensions

Floor 2

Total sqft: 1739

Living area: 1679

#	Room name	Dimensions	Area (sqft)	Counted as Living Area
12	Bath	6'2" x 7'5"	46 sq. ft	Yes
13	Bath	10'11" x 13'2"	143 sq. ft	Yes
14	Bedroom	10'10" x 9'6"	104 sq. ft	Yes
15	W.i.c.	5'11" x 11'9"	67 sq. ft	Yes
16	Hall	12'10" x 15'2"	195 sq. ft	Yes
17	Porch	4'1" x 6'11"	60 sq. ft	No
18	Bedroom	10'10" x 11'0"	120 sq. ft	Yes
19	Laundry	6'4" x 7'5"	47 sq. ft	Yes
20	Primary Bedroom	11'3" x 21'7"	237 sq. ft	Yes
21	Bedroom	17'10" x 11'9"	189 sq. ft	Yes
22	Bedroom	19'4" x 13'2"	223 sq. ft	Yes

Scan captured on Fri, 31 May 2024 18:47:09 GMT

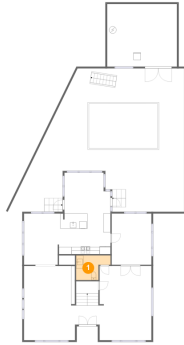
Information is calculated by CubiCasa technology; deemed highly reliable but not guaranteed.

**1706 West Hills Avenue, Historic Hyde Park,
Tampa, Hillsborough County, Florida, United**

#	Room name	Dimensions	Area (sqft)	Counted as Living Area
23	Bath	8'1" x 3'9"	31 sq. ft	Yes
24	Kitchen	10'11" x 7'0"	77 sq. ft	Yes

1706 West Hills Avenue, Historic Hyde Park, Tampa, Hillsborough County, Florida, United

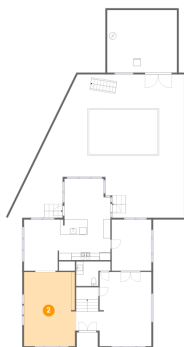
1 Floor 1 - Wc



Dimensions: 9'6" x 6'10"
Area: 51 sq. ft
Counted as Living Area:
Yes

Heated: Yes
Finished: Yes
Enclosed: Yes
Contiguous:
Yes
Permitted: Yes
Wet Space: Yes
Addition: No
Conversion: No

2 Floor 1 - Family Room

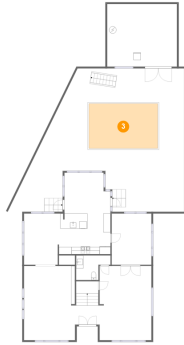


Dimensions: 14'5" x 20'6"
Area: 291 sq. ft
Counted as Living Area:
Yes

Heated: Yes
Finished: Yes
Enclosed: Yes
Contiguous:
Yes
Permitted: Yes
Wet Space: No
Addition: No
Conversion: No

1706 West Hills Avenue, Historic Hyde Park, Tampa, Hillsborough County, Florida, United

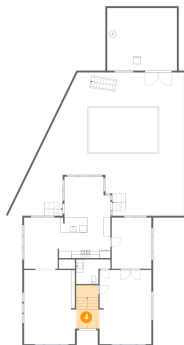
3 Floor 1 - Swimming Pool



Dimensions: 19'1" x 12'4"
Area: 236 sq. ft
Counted as Living Area: No

Heated: No
Finished: No
Enclosed: No
Contiguous: Yes
Permitted: No
Wet Space: No
Addition: No
Conversion: No

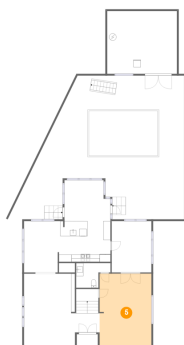
4 Floor 1 - Foyer



Dimensions: 6'6" x 5'3"
Area: 76 sq. ft
Counted as Living Area:
Yes

Heated: Yes
Finished: Yes
Enclosed: Yes
Contiguous:
Yes
Permitted: Yes
Wet Space: No
Addition: No
Conversion: No

5 Floor 1 - Living Room

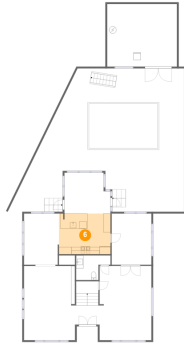


Dimensions: 14'4" x 20'7"
Area: 294 sq. ft
Counted as Living Area:
Yes

Heated: Yes
Finished: Yes
Enclosed: Yes
Contiguous:
Yes
Permitted: Yes
Wet Space: No
Addition: No
Conversion: No

1706 West Hills Avenue, Historic Hyde Park, Tampa, Hillsborough County, Florida, United

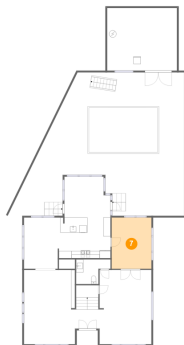
6 Floor 1 - Kitchen



Dimensions: 14'3" x 11'3"
Area: 160 sq. ft
Counted as Living Area:
Yes

Heated: Yes
Finished: Yes
Enclosed: Yes
Contiguous:
Yes
Permitted: Yes
Wet Space: No
Addition: No
Conversion: No

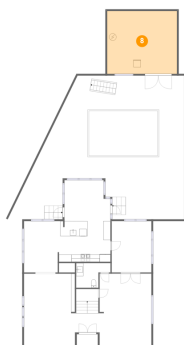
7 Floor 1 - Dining Room



Dimensions: 11'0" x 14'2"
Area: 156 sq. ft
Counted as Living Area:
Yes

Heated: Yes
Finished: Yes
Enclosed: Yes
Contiguous:
Yes
Permitted: Yes
Wet Space: No
Addition: No
Conversion: No

8 Floor 1 - Storage

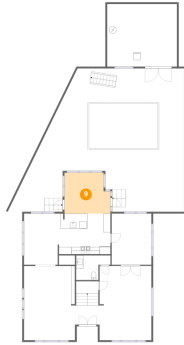


Dimensions: 19'4" x 17'4"
Area: 334 sq. ft
Counted as Living Area: No

Heated: No
Finished: No
Enclosed: No
Contiguous: Yes
Permitted: Yes
Wet Space: No
Addition: No
Conversion: No

1706 West Hills Avenue, Historic Hyde Park, Tampa, Hillsborough County, Florida, United

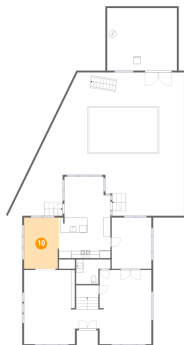
9 Floor 1 - Sitting Room



Dimensions: 12'9" x 11'4"
Area: 134 sq. ft
Counted as Living Area:
Yes

Heated: Yes
Finished: Yes
Enclosed: Yes
Contiguous:
Yes
Permitted: Yes
Wet Space: No
Addition: No
Conversion: No

10 Floor 1 - Breakfast Nook



Dimensions: 9'8" x 14'2"
Area: 135 sq. ft
Counted as Living Area:
Yes

Heated: Yes
Finished: Yes
Enclosed: Yes
Contiguous:
Yes
Permitted: Yes
Wet Space: No
Addition: No
Conversion: No

11 Floor 1 - Patio



Dimensions: 43'4" x 39'8"
Area: 1409 sq. ft
Counted as Living Area: No

Heated: No
Finished: Yes
Enclosed: No
Contiguous: Yes
Permitted: Yes
Wet Space: No
Addition: No
Conversion: No

1706 West Hills Avenue, Historic Hyde Park, Tampa, Hillsborough County, Florida, United

12 Floor 2 - Bath



Dimensions: 6'2" x 7'5"
Area: 46 sq. ft
Counted as Living Area:
Yes

Heated: Yes
Finished: Yes
Enclosed: Yes
Contiguous:
Yes
Permitted: Yes
Wet Space: Yes
Addition: No
Conversion: No



13 Floor 2 - Bath



Dimensions: 10'11" x 13'2"
Area: 143 sq. ft
Counted as Living Area:
Yes

Heated: Yes
Finished: Yes
Enclosed: Yes
Contiguous:
Yes
Permitted: Yes
Wet Space: Yes
Addition: No
Conversion: No



14 Floor 2 - Bedroom



Dimensions: 10'10" x 9'6"
Area: 104 sq. ft
Counted as Living Area:
Yes

Heated: Yes
Finished: Yes
Enclosed: Yes
Contiguous:
Yes
Permitted: Yes
Wet Space: No
Addition: No
Conversion: No



1706 West Hills Avenue, Historic Hyde Park, Tampa, Hillsborough County, Florida, United

15 Floor 2 - W.i.c.



Dimensions: 5'11" x 11'9"
Area: 67 sq. ft
Counted as Living Area:
Yes

Heated: Yes
Finished: Yes
Enclosed: Yes
Contiguous:
Yes
Permitted: Yes
Wet Space: No
Addition: No
Conversion: No



16 Floor 2 - Hall



Dimensions: 12'10" x 15'2"
Area: 195 sq. ft
Counted as Living Area:
Yes

Heated: Yes
Finished: Yes
Enclosed: Yes
Contiguous:
Yes
Permitted: Yes
Wet Space: No
Addition: No
Conversion: No



17 Floor 2 - Porch



Dimensions: 4'1" x 6'11"
Area: 60 sq. ft
Counted as Living Area: No

Heated: No
Finished: Yes
Enclosed: No
Contiguous: Yes
Permitted: Yes
Wet Space: No
Addition: No
Conversion: No



1706 West Hills Avenue, Historic Hyde Park, Tampa, Hillsborough County, Florida, United

18 Floor 2 - Bedroom



Dimensions: 10'10" x 11'0"
Area: 120 sq. ft
Counted as Living Area:
Yes

Heated: Yes
Finished: Yes
Enclosed: Yes
Contiguous:
Yes
Permitted: Yes
Wet Space: No
Addition: No
Conversion: No



19 Floor 2 - Laundry



Dimensions: 6'4" x 7'5"
Area: 47 sq. ft
Counted as Living Area:
Yes

Heated: Yes
Finished: Yes
Enclosed: Yes
Contiguous:
Yes
Permitted: Yes
Wet Space: No
Addition: No
Conversion: No



20 Floor 2 - Primary Bedroom



Dimensions: 11'3" x 21'7"
Area: 237 sq. ft
Counted as Living Area:
Yes

Heated: Yes
Finished: Yes
Enclosed: Yes
Contiguous:
Yes
Permitted: Yes
Wet Space: No
Addition: No
Conversion: No



1706 West Hills Avenue, Historic Hyde Park, Tampa, Hillsborough County, Florida, United

21 Floor 2 - Bedroom



Dimensions: 17'10" x 11'9"
Area: 189 sq. ft
Counted as Living Area:
Yes

Heated: Yes
Finished: Yes
Enclosed: Yes
Contiguous:
Yes
Permitted: Yes
Wet Space: No
Addition: No
Conversion: No



22 Floor 2 - Bedroom



Dimensions: 19'4" x 13'2"
Area: 223 sq. ft
Counted as Living Area:
Yes

Heated: Yes
Finished: Yes
Enclosed: Yes
Contiguous:
Yes
Permitted: Yes
Wet Space: No
Addition: No
Conversion: No



23 Floor 2 - Bath



Dimensions: 8'1" x 3'9"
Area: 31 sq. ft
Counted as Living Area:
Yes

Heated: Yes
Finished: Yes
Enclosed: Yes
Contiguous:
Yes
Permitted: Yes
Wet Space: Yes
Addition: No
Conversion: No



1706 West Hills Avenue, Historic Hyde Park, Tampa, Hillsborough County, Florida, United

24 Floor 2 - Kitchen



Dimensions: 10'11" x 7'0"
Area: 77 sq. ft
Counted as Living Area:
Yes

Heated: Yes
Finished: Yes
Enclosed: Yes
Contiguous:
Yes
Permitted: Yes
Wet Space: No
Addition: No
Conversion: No

