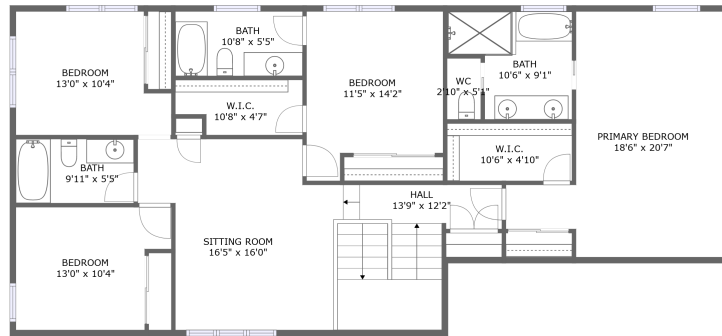
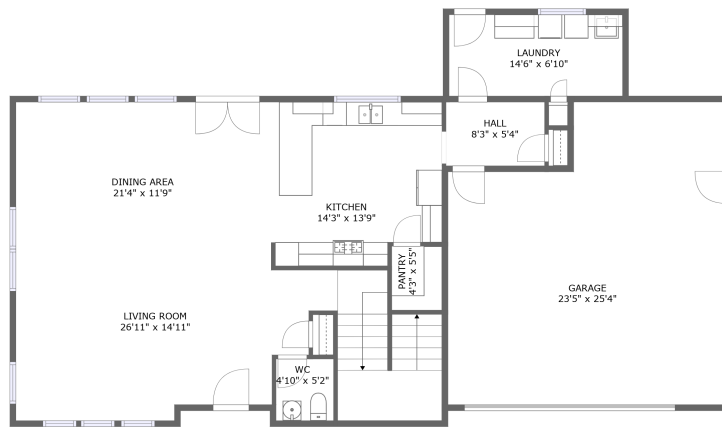


1797 Mirasol Way, Atascadero, San Luis Obispo County, California, United States, 93422



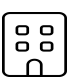


FLOOR 2



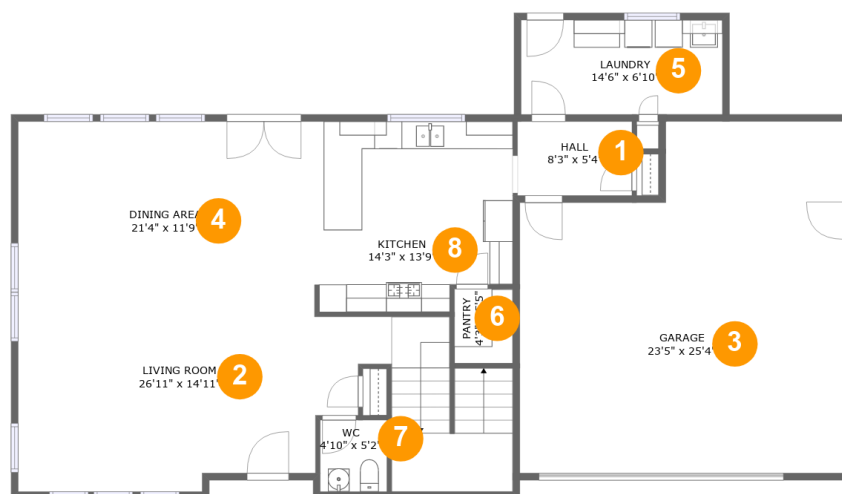
FLOOR 1

Property summary

 **1** Garages  **4** Bedrooms  **3** Bathrooms  **1** Half baths

 **2** Floors  **2,721** Gross living area sqft  **3,281** Total sqft

1797 Mirasol Way, Atascadero, San Luis Obispo County, California, United States, 93422



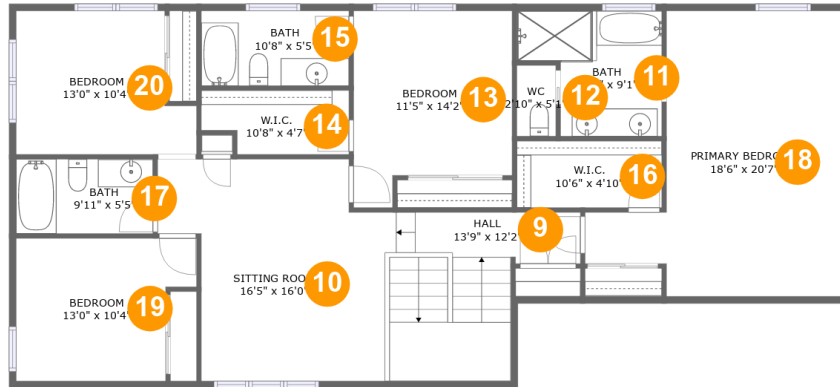
Room dimensions

Floor 1

Total sqft: 1749 Living area: 1189

#		Dimensions	sqft	Counted as living area
1	Hall	8'3" x 5'4"	44 sq. ft	Yes
2	Living Room	26'11" x 14'11"	431 sq. ft	Yes
3	Garage	23'5" x 25'4"	531 sq. ft	No
4	Dining Area	21'4" x 11'9"	252 sq. ft	Yes
5	Laundry	14'6" x 6'10"	99 sq. ft	Yes
6	Pantry	4'3" x 5'5"	23 sq. ft	Yes
7	WC	4'10" x 5'2"	25 sq. ft	Yes
8	Kitchen	14'3" x 13'9"	187 sq. ft	Yes

1797 Mirasol Way, Atascadero, San Luis Obispo County, California, United States, 93422



Room dimensions

Floor 2

Total sqft: 1532 Living area: 1532

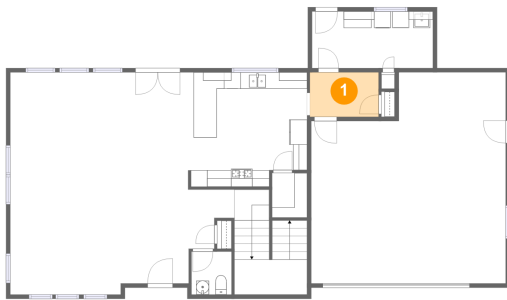
#		Dimensions	sqft	Counted as living area
9	Hall	13'9" x 12'2"	129 sq. ft	Yes
10	Sitting Room	16'5" x 16'0"	219 sq. ft	Yes
11	Bath	10'6" x 9'1"	78 sq. ft	Yes
12	WC	2'10" x 5'1"	14 sq. ft	Yes
13	Bedroom	11'5" x 14'2"	142 sq. ft	Yes
14	W.I.C.	10'8" x 4'7"	45 sq. ft	Yes
15	Bath	10'8" x 5'5"	58 sq. ft	Yes
16	W.I.C.	10'6" x 4'10"	50 sq. ft	Yes
17	Bath	9'11" x 5'5"	53 sq. ft	Yes
18	Primary Bedroom	18'6" x 20'7"	282 sq. ft	Yes
19	Bedroom	13'0" x 10'4"	119 sq. ft	Yes

**1797 Mirasol Way, Atascadero, San Luis Obispo
County, California, United States, 93422**

#		Dimensions	sqft	Counted as living area
20	Bedroom	13'0" x 10'4"	119 sq. ft	Yes

1797 Mirasol Way, Atascadero, San Luis Obispo County, California, United States, 93422

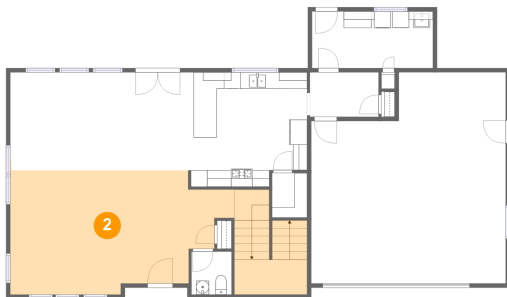
1 Floor 1 - Hall



Dimensions: 8'3" x 5'4"
Area: 44 sq. ft
Counted as living area: Yes

Heated: Yes
Finished: Yes
Enclosed: Yes
Contiguous: Yes
Permitted: Yes
Wet space: No
Addition: No
Conversion: No

2 Floor 1 - Living Room

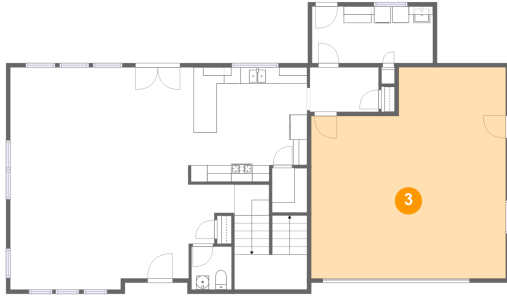


Dimensions: 26'11" x 14'11"
Area: 431 sq. ft
Counted as living area: Yes

Heated: Yes
Finished: Yes
Enclosed: Yes
Contiguous: Yes
Permitted: Yes
Wet space: No
Addition: No
Conversion: No

1797 Mirasol Way, Atascadero, San Luis Obispo
County, California, United States, 93422

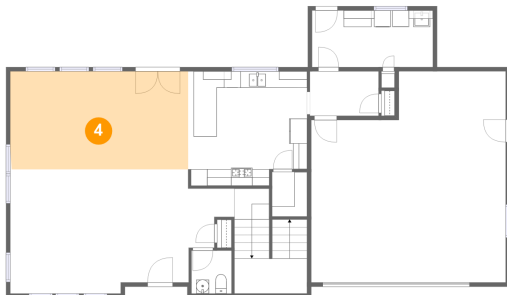
3 Floor 1 - Garage



Dimensions: 23'5" x 25'4"
Area: 531 sq. ft
Counted as living area: No

Heated: No
Finished: No
Enclosed: Yes
Contiguous: Yes
Permitted: Yes
Wet space: No
Addition: No
Conversion: No

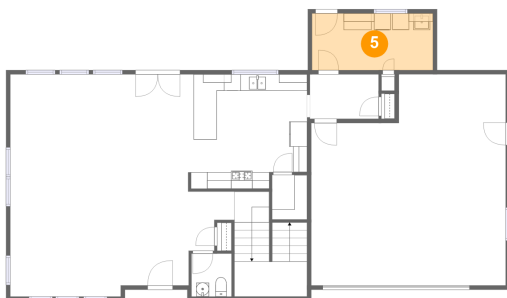
4 Floor 1 - Dining Area



Dimensions: 21'4" x 11'9"
Area: 252 sq. ft
Counted as living area: Yes

Heated: Yes
Finished: Yes
Enclosed: Yes
Contiguous: Yes
Permitted: Yes
Wet space: No
Addition: No
Conversion: No

5 Floor 1 - Laundry

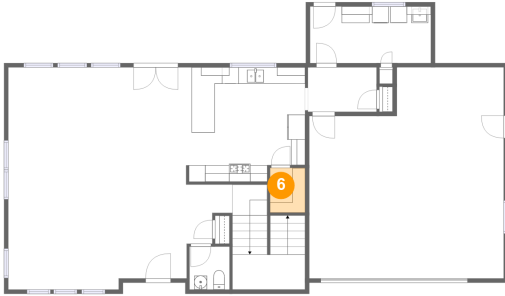


Dimensions: 14'6" x 6'10"
Area: 99 sq. ft
Counted as living area: Yes

Heated: Yes
Finished: Yes
Enclosed: Yes
Contiguous: Yes
Permitted: Yes
Wet space: No
Addition: No
Conversion: No

1797 Mirasol Way, Atascadero, San Luis Obispo
County, California, United States, 93422

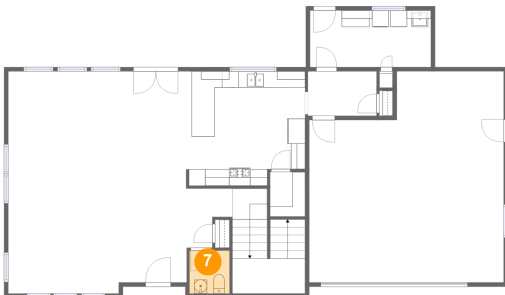
6 Floor 1 - Pantry



Dimensions: 4'3" x 5'5"
Area: 23 sq. ft
Counted as living area: Yes

Heated: Yes
Finished: Yes
Enclosed: Yes
Contiguous: Yes
Permitted: Yes
Wet space: No
Addition: No
Conversion: No

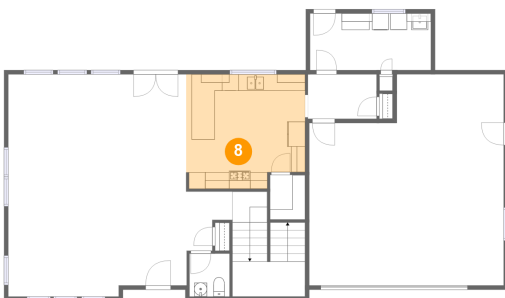
7 Floor 1 - WC



Dimensions: 4'10" x 5'2"
Area: 25 sq. ft
Counted as living area: Yes

Heated: Yes
Finished: Yes
Enclosed: Yes
Contiguous: Yes
Permitted: Yes
Wet space: Yes
Addition: No
Conversion: No

8 Floor 1 - Kitchen

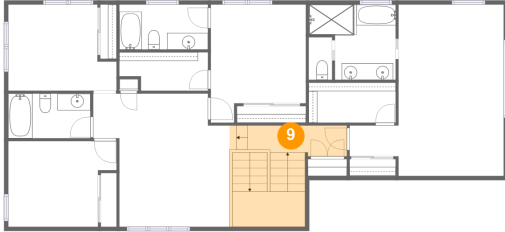


Dimensions: 14'3" x 13'9"
Area: 187 sq. ft
Counted as living area: Yes

Heated: Yes
Finished: Yes
Enclosed: Yes
Contiguous: Yes
Permitted: Yes
Wet space: No
Addition: No
Conversion: No

**1797 Mirasol Way, Atascadero, San Luis Obispo
County, California, United States, 93422**

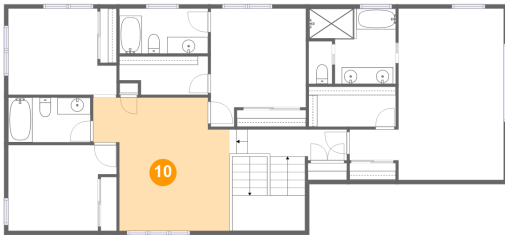
9 Floor 2 - Hall



Dimensions: 13'9" x 12'2"
Area: 129 sq. ft
Counted as living area: Yes

Heated: Yes
Finished: Yes
Enclosed: Yes
Contiguous: Yes
Permitted: Yes
Wet space: No
Addition: No
Conversion: No

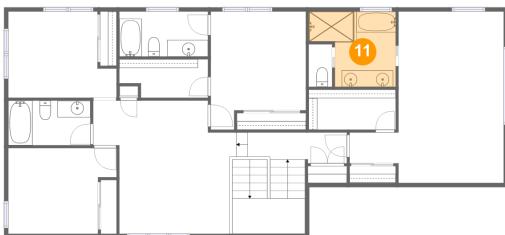
10 Floor 2 - Sitting Room



Dimensions: 16'5" x 16'0"
Area: 219 sq. ft
Counted as living area: Yes

Heated: Yes
Finished: Yes
Enclosed: Yes
Contiguous: Yes
Permitted: Yes
Wet space: No
Addition: No
Conversion: No

11 Floor 2 - Bath

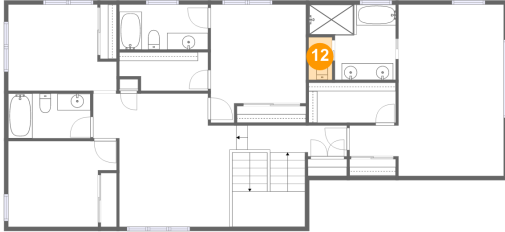


Dimensions: 10'6" x 9'1"
Area: 78 sq. ft
Counted as living area: Yes

Heated: Yes
Finished: Yes
Enclosed: Yes
Contiguous: Yes
Permitted: Yes
Wet space: Yes
Addition: No
Conversion: No

1797 Mirasol Way, Atascadero, San Luis Obispo
County, California, United States, 93422

12 Floor 2 - WC



Dimensions: 2'10" x 5'1"
Area: 14 sq. ft
Counted as living area: Yes

Heated: Yes
Finished: Yes
Enclosed: Yes
Contiguous: Yes
Permitted: Yes
Wet space: Yes
Addition: No
Conversion: No

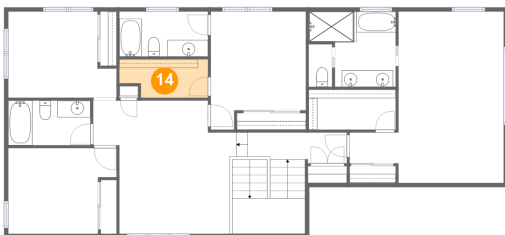
13 Floor 2 - Bedroom



Dimensions: 11'5" x 14'2"
Area: 142 sq. ft
Counted as living area: Yes

Heated: Yes
Finished: Yes
Enclosed: Yes
Contiguous: Yes
Permitted: Yes
Wet space: No
Addition: No
Conversion: No

14 Floor 2 - W.I.C.

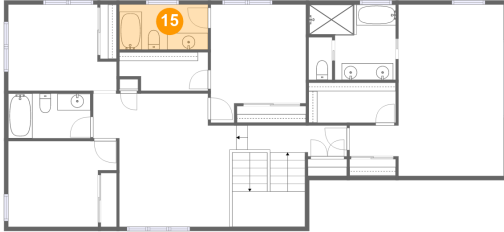


Dimensions: 10'8" x 4'7"
Area: 45 sq. ft
Counted as living area: Yes

Heated: Yes
Finished: Yes
Enclosed: Yes
Contiguous: Yes
Permitted: Yes
Wet space: No
Addition: No
Conversion: No

**1797 Mirasol Way, Atascadero, San Luis Obispo
County, California, United States, 93422**

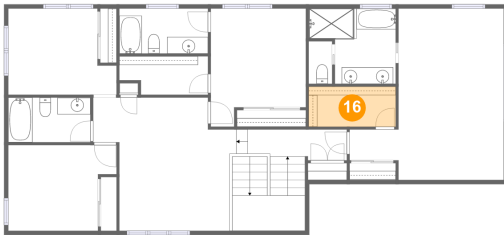
15 Floor 2 - Bath



Dimensions: 10'8" x 5'5"
Area: 58 sq. ft
Counted as living area: Yes

Heated: Yes
Finished: Yes
Enclosed: Yes
Contiguous: Yes
Permitted: Yes
Wet space: Yes
Addition: No
Conversion: No

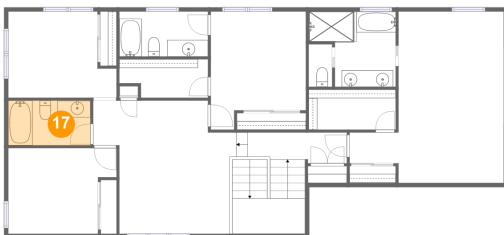
16 Floor 2 - W.I.C.



Dimensions: 10'6" x 4'10"
Area: 50 sq. ft
Counted as living area: Yes

Heated: Yes
Finished: Yes
Enclosed: Yes
Contiguous: Yes
Permitted: Yes
Wet space: No
Addition: No
Conversion: No

17 Floor 2 - Bath



Dimensions: 9'11" x 5'5"
Area: 53 sq. ft
Counted as living area: Yes

Heated: Yes
Finished: Yes
Enclosed: Yes
Contiguous: Yes
Permitted: Yes
Wet space: Yes
Addition: No
Conversion: No

**1797 Mirasol Way, Atascadero, San Luis Obispo
County, California, United States, 93422**

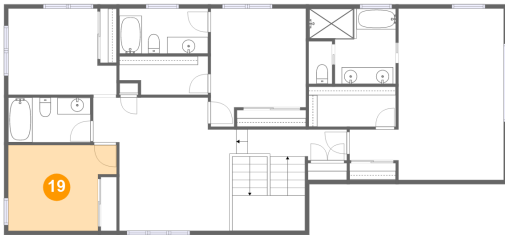
18 Floor 2 - Primary Bedroom



Dimensions: 18'6" x 20'7"
Area: 282 sq. ft
Counted as living area: Yes

Heated: Yes
Finished: Yes
Enclosed: Yes
Contiguous: Yes
Permitted: Yes
Wet space: No
Addition: No
Conversion: No

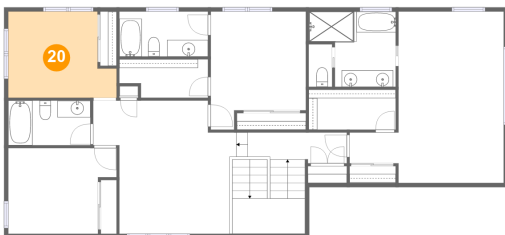
19 Floor 2 - Bedroom



Dimensions: 13'0" x 10'4"
Area: 119 sq. ft
Counted as living area: Yes

Heated: Yes
Finished: Yes
Enclosed: Yes
Contiguous: Yes
Permitted: Yes
Wet space: No
Addition: No
Conversion: No

20 Floor 2 - Bedroom



Dimensions: 13'0" x 10'4"
Area: 119 sq. ft
Counted as living area: Yes

Heated: Yes
Finished: Yes
Enclosed: Yes
Contiguous: Yes
Permitted: Yes
Wet space: No
Addition: No
Conversion: No