



Home report


698 Lake Dr S,Keswick,ON,CA





Property summary


 **1** Garages


 **3** Bedrooms

 **1** Bathrooms

 **1** Half baths

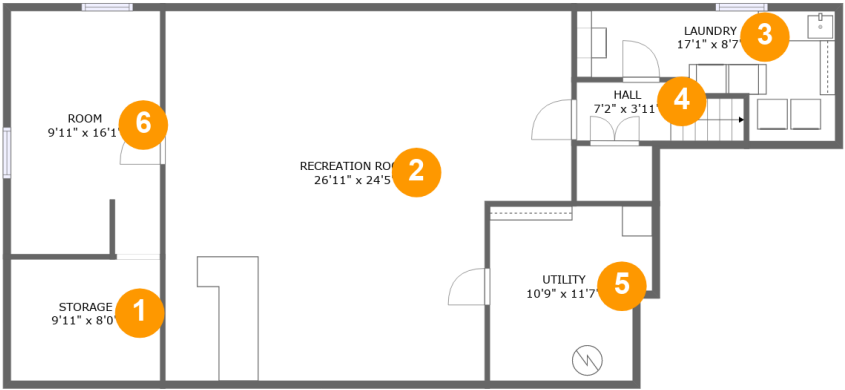
 **2** Floors

 **2,545** Gross living area sqft

 **3,160** Total sqft

Home report

698 Lake Dr S,Keswick,ON,CA



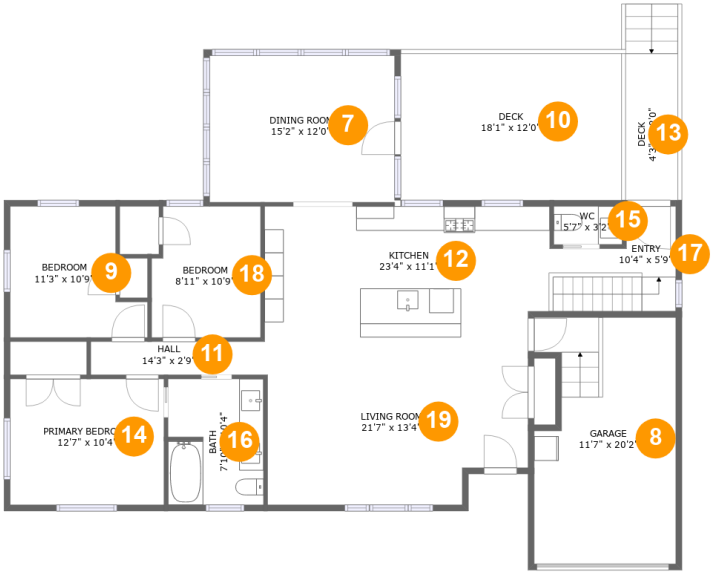
Room dimensions

Floor 1 Total sqft: 1215 Living area: 1126

#		Dimensions	sqft	Counted as living area
1	Storage	9'11" x 8'0"	79 sq. ft	No
2	Recreation Room	26'11" x 24'5"	589 sq. ft	Yes
3	Laundry	17'1" x 8'7"	103 sq. ft	Yes
4	Hall	7'2" x 3'11"	39 sq. ft	Yes
5	Utility	10'9" x 11'7"	116 sq. ft	Yes
6	Room	9'11" x 16'1"	158 sq. ft	Yes

Home report

698 Lake Dr S,Keswick,ON,CA



Room dimensions

Floor 2 Total sqft: 1945 Living area: 1419

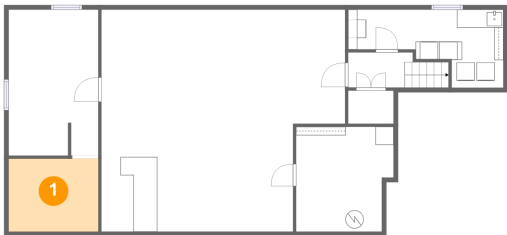
#		Dimensions	sqft	Counted as living area
7	Dining Room	15'2" x 12'0"	182 sq. ft	Yes
8	Garage	11'7" x 20'2"	220 sq. ft	No
9	Bedroom	11'3" x 10'9"	101 sq. ft	Yes
10	Deck	18'1" x 12'0"	217 sq. ft	No
11	Hall	14'3" x 2'9"	39 sq. ft	Yes
12	Kitchen	23'4" x 11'1"	254 sq. ft	Yes
13	Deck	4'3" x 12'0"	69 sq. ft	No
14	Primary Bedroom	12'7" x 10'4"	130 sq. ft	Yes
15	WC	5'7" x 3'2"	18 sq. ft	Yes
16	Bath	7'10" x 10'4"	80 sq. ft	Yes
17	Entry	10'4" x 5'9"	67 sq. ft	Yes

Home report

698 Lake Dr S,Keswick,ON,CA

#		Dimensions	sqft	Counted as living area
18	Bedroom	8'11" x 10'9"	92 sq. ft	Yes
19	Living Room	21'7" x 13'4"	270 sq. ft	Yes

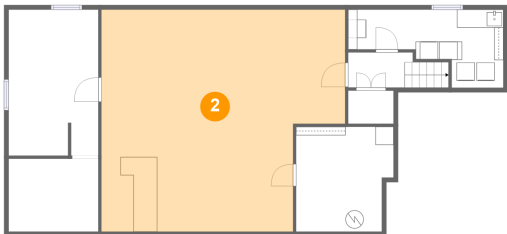
1 Floor 1 - Storage



Dimensions: 9'11" x 8'0"
Area: 79 sq. ft
Counted as living area: No

Heated: No
Finished: No
Enclosed: No
Contiguous: Yes
Permitted: Yes
Wet space: No
Addition: No
Conversion: No

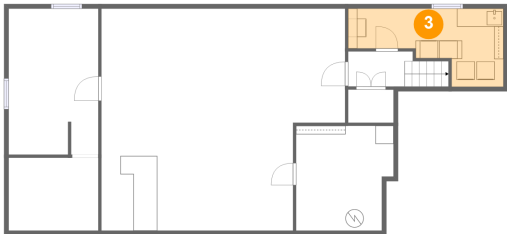
2 Floor 1 - Recreation Room



Dimensions: 26'11" x 24'5"
Area: 589 sq. ft
Counted as living area: Yes

Heated: Yes
Finished: Yes
Enclosed: Yes
Contiguous: Yes
Permitted: Yes
Wet space: No
Addition: No
Conversion: No

3 Floor 1 - Laundry



Dimensions: 17'1" x 8'7"
Area: 103 sq. ft
Counted as living area: Yes

Heated: Yes
Finished: Yes
Enclosed: Yes
Contiguous: Yes
Permitted: Yes
Wet space: No
Addition: No
Conversion: No

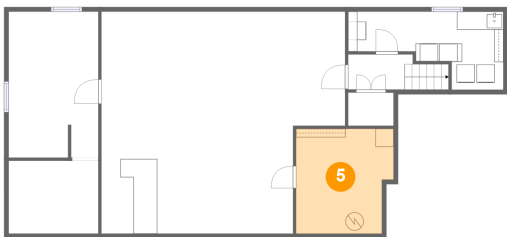
4 Floor 1 - Hall



Dimensions: 7'2" x 3'11"
Area: 39 sq. ft
Counted as living area: Yes

Heated: Yes
Finished: Yes
Enclosed: Yes
Contiguous: Yes
Permitted: Yes
Wet space: No
Addition: No
Conversion: No

5 Floor 1 - Utility



Dimensions: 10'9" x 11'7"
Area: 116 sq. ft
Counted as living area: Yes

Heated: Yes
Finished: Yes
Enclosed: Yes
Contiguous: Yes
Permitted: Yes
Wet space: No
Addition: No
Conversion: No

6 Floor 1 - Room



Dimensions: 9'11" x 16'1"
Area: 158 sq. ft
Counted as living area: Yes

Heated: Yes
Finished: Yes
Enclosed: Yes
Contiguous: Yes
Permitted: Yes
Wet space: No
Addition: No
Conversion: No

7 Floor 2 - Dining Room



Dimensions: 15'2" x 12'0"
Area: 182 sq. ft
Counted as living area: Yes

Heated: Yes
Finished: Yes
Enclosed: Yes
Contiguous: Yes
Permitted: Yes
Wet space: No
Addition: No
Conversion: No

8 Floor 2 - Garage



Dimensions: 11'7" x 20'2"
Area: 220 sq. ft
Counted as living area: No

Heated: No
Finished: No
Enclosed: Yes
Contiguous: Yes
Permitted: Yes
Wet space: No
Addition: No
Conversion: No

9 Floor 2 - Bedroom



Dimensions: 11'3" x 10'9"
Area: 101 sq. ft
Counted as living area: Yes

Heated: Yes
Finished: Yes
Enclosed: Yes
Contiguous: Yes
Permitted: Yes
Wet space: No
Addition: No
Conversion: No

10 Floor 2 - Deck



Dimensions: 18'1" x 12'0"
Area: 217 sq. ft
Counted as living area: No

Heated: No
Finished: Yes
Enclosed: No
Contiguous: Yes
Permitted: Yes
Wet space: No
Addition: No
Conversion: No

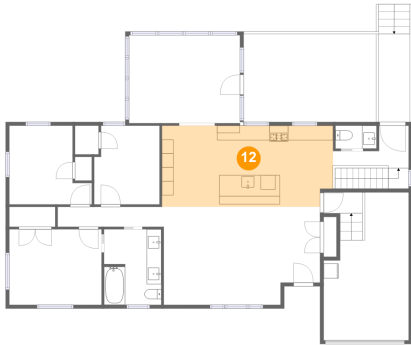
11 Floor 2 - Hall



Dimensions: 14'3" x 2'9"
Area: 39 sq. ft
Counted as living area: Yes

Heated: Yes
Finished: Yes
Enclosed: Yes
Contiguous: Yes
Permitted: Yes
Wet space: No
Addition: No
Conversion: No

12 Floor 2 - Kitchen



Dimensions: 23'4" x 11'1"
Area: 254 sq. ft
Counted as living area: Yes

Heated: Yes
Finished: Yes
Enclosed: Yes
Contiguous: Yes
Permitted: Yes
Wet space: No
Addition: No
Conversion: No

13 Floor 2 - Deck



Dimensions: 4'3" x 12'0"
Area: 69 sq. ft
Counted as living area: No

Heated: No
Finished: Yes
Enclosed: No
Contiguous: Yes
Permitted: Yes
Wet space: No
Addition: No
Conversion: No

14 Floor 2 - Primary Bedroom



Dimensions: 12'7" x 10'4"
Area: 130 sq. ft
Counted as living area: Yes

Heated: Yes
Finished: Yes
Enclosed: Yes
Contiguous: Yes
Permitted: Yes
Wet space: No
Addition: No
Conversion: No

15 Floor 2 - WC



Dimensions: 5'7" x 3'2"
Area: 18 sq. ft
Counted as living area: Yes

Heated: Yes
Finished: Yes
Enclosed: Yes
Contiguous: Yes
Permitted: Yes
Wet space: Yes
Addition: No
Conversion: No

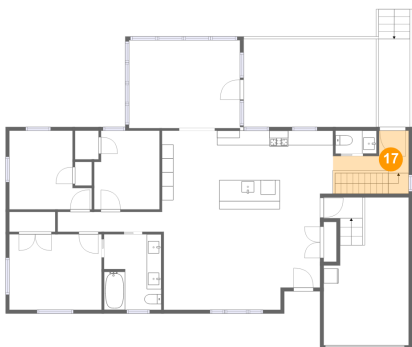
16 Floor 2 - Bath



Dimensions: 7'10" x 10'4"
Area: 80 sq. ft
Counted as living area: Yes

Heated: Yes
Finished: Yes
Enclosed: Yes
Contiguous: Yes
Permitted: Yes
Wet space: Yes
Addition: No
Conversion: No

17 Floor 2 - Entry



Dimensions: 10'4" x 5'9"
Area: 67 sq. ft
Counted as living area: Yes

Heated: Yes
Finished: Yes
Enclosed: Yes
Contiguous: Yes
Permitted: Yes
Wet space: No
Addition: No
Conversion: No

18 Floor 2 - Bedroom



Dimensions: 8'11" x 10'9"
Area: 92 sq. ft
Counted as living area: Yes

Heated: Yes
Finished: Yes
Enclosed: Yes
Contiguous: Yes
Permitted: Yes
Wet space: No
Addition: No
Conversion: No

19 Floor 2 - Living Room



Dimensions: 21'7" x 13'4"
Area: 270 sq. ft
Counted as living area: Yes

Heated: Yes
Finished: Yes
Enclosed: Yes
Contiguous: Yes
Permitted: Yes
Wet space: No
Addition: No
Conversion: No