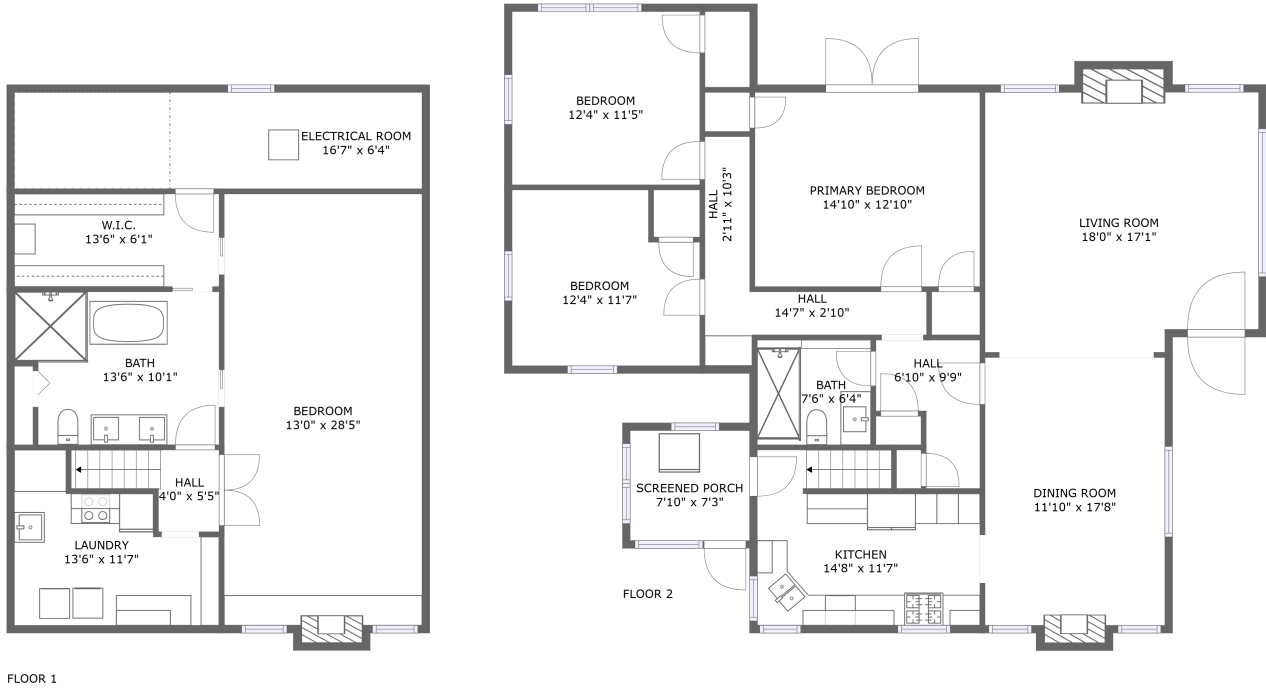



9320 Southeast Tenino Court, Lents, Portland, Multnomah County, Oregon, United States, 97266



Property summary


 **0** Garages

 **4** Bedrooms

 **2** Bathrooms

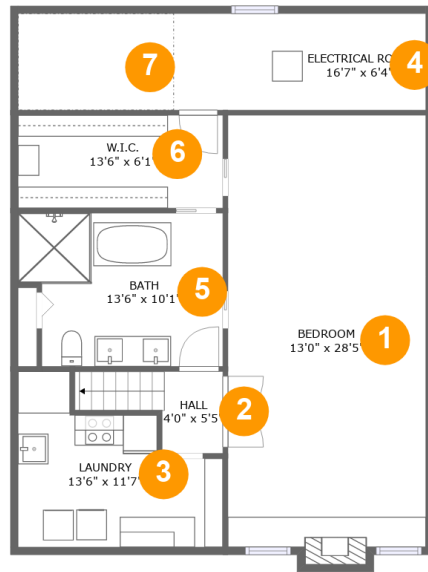
 **0** Half baths

 **2** Floors

 **2,317** Gross living area sqft

 **2,599** Total sqft

**9320 Southeast Tenino Court, Lents, Portland,
Multnomah County, Oregon, United States, 97266**



Room dimensions

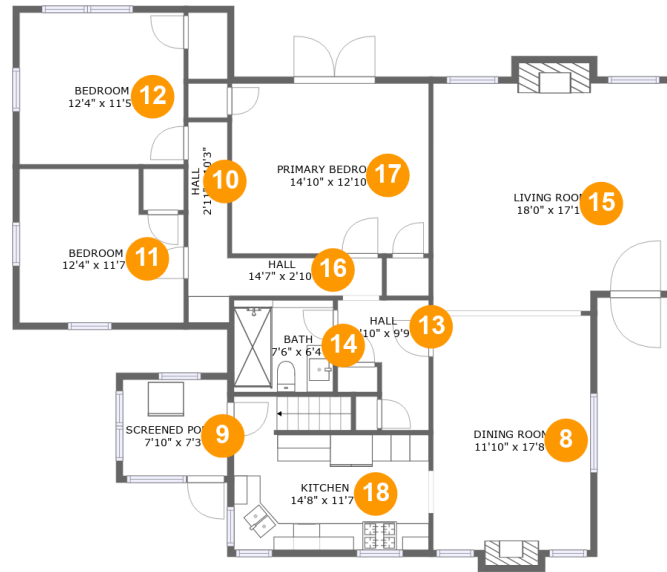
Floor 1

Total sqft: 1011

Living area: 814

#		Dimensions	sqft	Counted as living area
1	Bedroom	13'0" x 28'5"	375 sq. ft	Yes
2	Hall	4'0" x 5'5"	36 sq. ft	Yes
3	Laundry	13'6" x 11'7"	114 sq. ft	Yes
4	Electrical Room	16'7" x 6'4"	105 sq. ft	No
5	Bath	13'6" x 10'1"	127 sq. ft	Yes
6	W.I.C.	13'6" x 6'1"	82 sq. ft	Yes
7	Crawl Space	10'3" x 6'4"	65 sq. ft	No

9320 Southeast Tenino Court, Lents, Portland, Multnomah County, Oregon, United States, 97266



Room dimensions

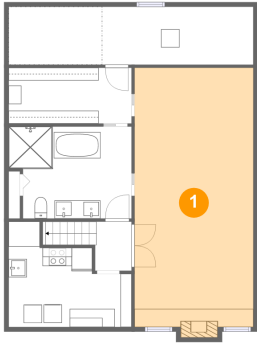
Floor 2

Total sqft: 1588 Living area: 1503

#		Dimensions	sqft	Counted as living area
8	Dining Room	11'10" x 17'8"	214 sq. ft	Yes
9	Screened Porch	7'10" x 7'3"	57 sq. ft	No
10	Hall	2'11" x 10'3"	30 sq. ft	Yes
11	Bedroom	12'4" x 11'7"	132 sq. ft	Yes
12	Bedroom	12'4" x 11'5"	141 sq. ft	Yes
13	Hall	6'10" x 9'9"	50 sq. ft	Yes
14	Bath	7'6" x 6'4"	52 sq. ft	Yes
15	Living Room	18'0" x 17'1"	308 sq. ft	Yes
16	Hall	14'7" x 2'10"	48 sq. ft	Yes
17	Primary Bedroom	14'10" x 12'10"	190 sq. ft	Yes
18	Kitchen	14'8" x 11'7"	151 sq. ft	Yes

9320 Southeast Tenino Court, Lents, Portland, Multnomah County, Oregon, United States, 97266

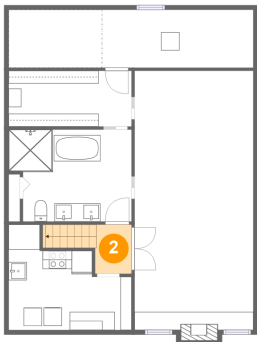
1 Floor 1 - Bedroom



Dimensions: 13'0" x 28'5"
Area: 375 sq. ft
Counted as living area: Yes

Heated: Yes
Finished: Yes
Enclosed: Yes
Contiguous: Yes
Permitted: Yes
Wet space: No
Addition: No
Conversion: No

2 Floor 1 - Hall

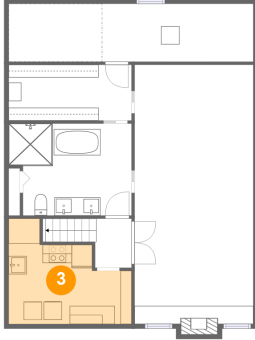


Dimensions: 4'0" x 5'5"
Area: 36 sq. ft
Counted as living area: Yes

Heated: Yes
Finished: Yes
Enclosed: Yes
Contiguous: Yes
Permitted: Yes
Wet space: No
Addition: No
Conversion: No

9320 Southeast Tenino Court, Lents, Portland, Multnomah County, Oregon, United States, 97266

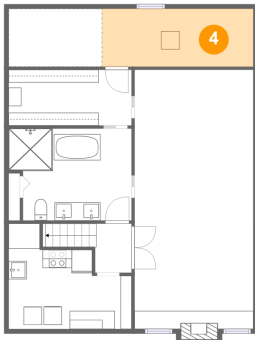
3 Floor 1 - Laundry



Dimensions: 13'6" x 11'7"
Area: 114 sq. ft
Counted as living area: Yes

Heated: Yes
Finished: Yes
Enclosed: Yes
Contiguous: Yes
Permitted: Yes
Wet space: No
Addition: No
Conversion: No

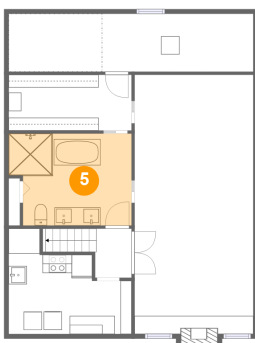
4 Floor 1 - Electrical Room



Dimensions: 16'7" x 6'4"
Area: 105 sq. ft
Counted as living area: No

Heated: No
Finished: No
Enclosed: Yes
Contiguous: Yes
Permitted: Yes
Wet space: No
Addition: No
Conversion: No

5 Floor 1 - Bath

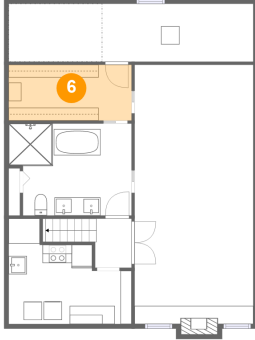


Dimensions: 13'6" x 10'1"
Area: 127 sq. ft
Counted as living area: Yes

Heated: Yes
Finished: Yes
Enclosed: Yes
Contiguous: Yes
Permitted: Yes
Wet space: Yes
Addition: No
Conversion: No

**9320 Southeast Tenino Court, Lents, Portland,
Multnomah County, Oregon, United States, 97266**

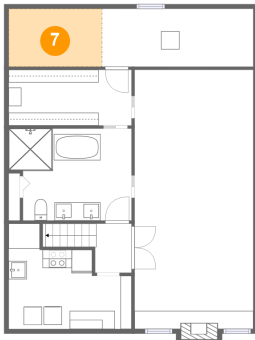
6 Floor 1 - W.I.C.



Dimensions: 13'6" x 6'1"
Area: 82 sq. ft
Counted as living area: Yes

Heated: Yes
Finished: Yes
Enclosed: Yes
Contiguous: Yes
Permitted: Yes
Wet space: No
Addition: No
Conversion: No

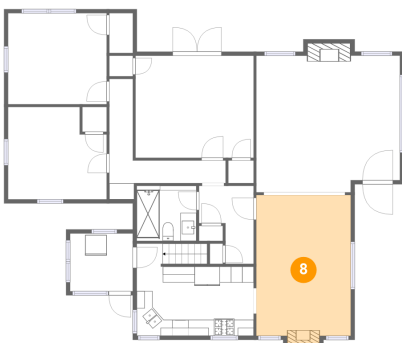
7 Floor 1 - Crawl Space



Dimensions: 10'3" x 6'4"
Area: 65 sq. ft
Counted as living area: No

Heated: No
Finished: No
Enclosed: No
Contiguous: Yes
Permitted: No
Wet space: No
Addition: No
Conversion: No

8 Floor 2 - Dining Room

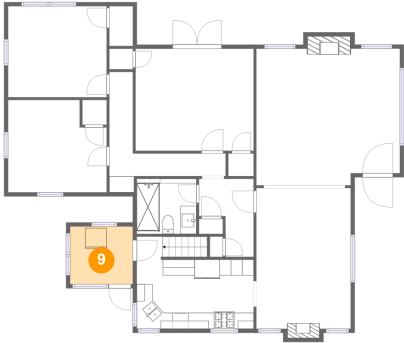


Dimensions: 11'10" x 17'8"
Area: 214 sq. ft
Counted as living area: Yes

Heated: Yes
Finished: Yes
Enclosed: Yes
Contiguous: Yes
Permitted: Yes
Wet space: No
Addition: No
Conversion: No

9320 Southeast Tenino Court, Lents, Portland, Multnomah County, Oregon, United States, 97266

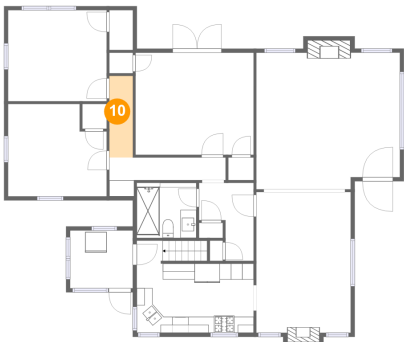
9 Floor 2 - Screened Porch



Dimensions: 7'10" x 7'3"
Area: 57 sq. ft
Counted as living area: No

Heated: No
Finished: Yes
Enclosed: No
Contiguous: Yes
Permitted: Yes
Wet space: No
Addition: No
Conversion: No

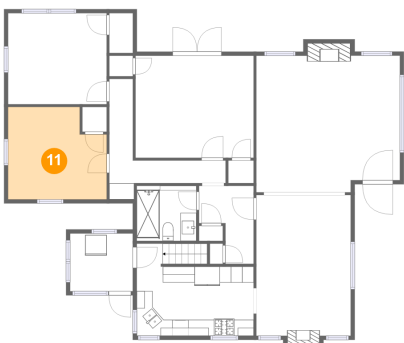
10 Floor 2 - Hall



Dimensions: 2'11" x 10'3"
Area: 30 sq. ft
Counted as living area: Yes

Heated: Yes
Finished: Yes
Enclosed: Yes
Contiguous: Yes
Permitted: Yes
Wet space: No
Addition: No
Conversion: No

11 Floor 2 - Bedroom

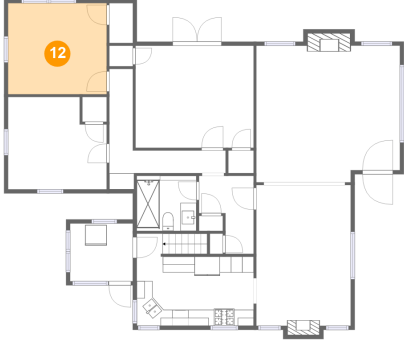


Dimensions: 12'4" x 11'7"
Area: 132 sq. ft
Counted as living area: Yes

Heated: Yes
Finished: Yes
Enclosed: Yes
Contiguous: Yes
Permitted: Yes
Wet space: No
Addition: No
Conversion: No

**9320 Southeast Tenino Court, Lents, Portland,
Multnomah County, Oregon, United States, 97266**

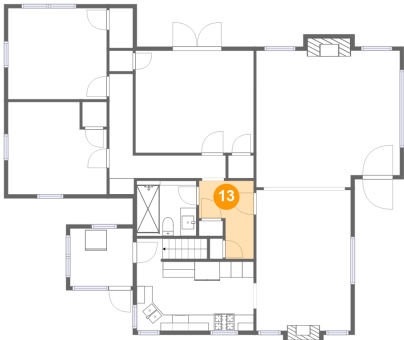
12 Floor 2 - Bedroom



Dimensions: 12'4" x 11'5"
Area: 141 sq. ft
Counted as living area: Yes

Heated: Yes
Finished: Yes
Enclosed: Yes
Contiguous: Yes
Permitted: Yes
Wet space: No
Addition: No
Conversion: No

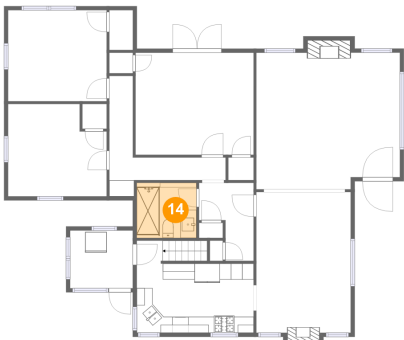
13 Floor 2 - Hall



Dimensions: 6'10" x 9'9"
Area: 50 sq. ft
Counted as living area: Yes

Heated: Yes
Finished: Yes
Enclosed: Yes
Contiguous: Yes
Permitted: Yes
Wet space: No
Addition: No
Conversion: No

14 Floor 2 - Bath

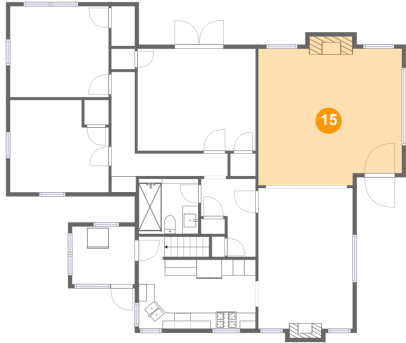


Dimensions: 7'6" x 6'4"
Area: 52 sq. ft
Counted as living area: Yes

Heated: Yes
Finished: Yes
Enclosed: Yes
Contiguous: Yes
Permitted: Yes
Wet space: Yes
Addition: No
Conversion: No

**9320 Southeast Tenino Court, Lents, Portland,
Multnomah County, Oregon, United States, 97266**

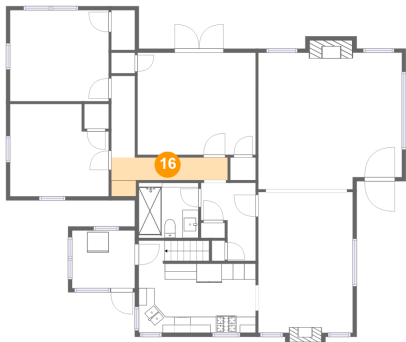
15 Floor 2 - Living Room



Dimensions: 18'0" x 17'1"
Area: 308 sq. ft
Counted as living area: Yes

Heated: Yes
Finished: Yes
Enclosed: Yes
Contiguous: Yes
Permitted: Yes
Wet space: No
Addition: No
Conversion: No

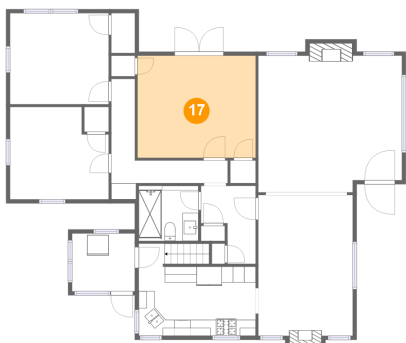
16 Floor 2 - Hall



Dimensions: 14'7" x 2'10"
Area: 48 sq. ft
Counted as living area: Yes

Heated: Yes
Finished: Yes
Enclosed: Yes
Contiguous: Yes
Permitted: Yes
Wet space: No
Addition: No
Conversion: No

17 Floor 2 - Primary Bedroom

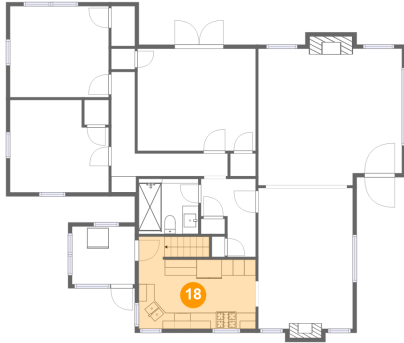


Dimensions: 14'10" x 12'10"
Area: 190 sq. ft
Counted as living area: Yes

Heated: Yes
Finished: Yes
Enclosed: Yes
Contiguous: Yes
Permitted: Yes
Wet space: No
Addition: No
Conversion: No

**9320 Southeast Tenino Court, Lents, Portland,
Multnomah County, Oregon, United States, 97266**

18 Floor 2 - Kitchen



Dimensions: 14'8" x 11'7"
Area: 151 sq. ft
Counted as living area: Yes

Heated: Yes
Finished: Yes
Enclosed: Yes
Contiguous: Yes
Permitted: Yes
Wet space: No
Addition: No
Conversion: No