


1226 Angle Plantation Road, Rocky Mount, Franklin County, Virginia, United States, 24151



Property summary

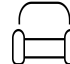
 **0** Garages

 **3** Bedrooms

 **3** Bathrooms

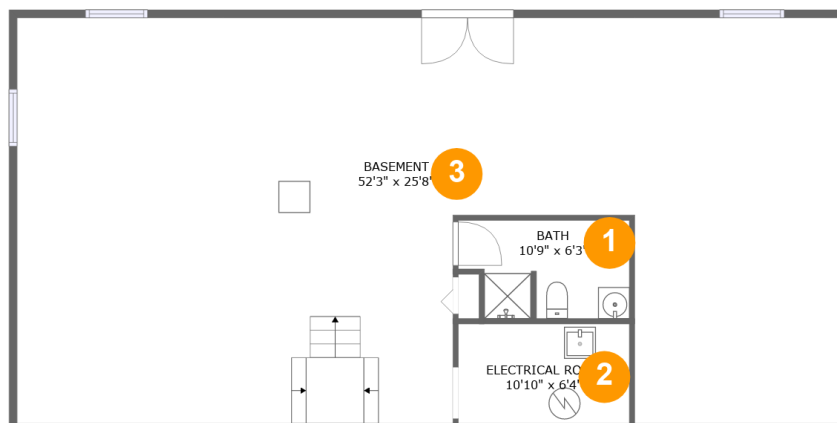
 **0** Half baths

 **2** Floors

 **1,490** Gross living area sqft

 **3,273** Total sqft

1226 Angle Plantation Road, Rocky Mount, Franklin County, Virginia, United States, 24151



Room dimensions

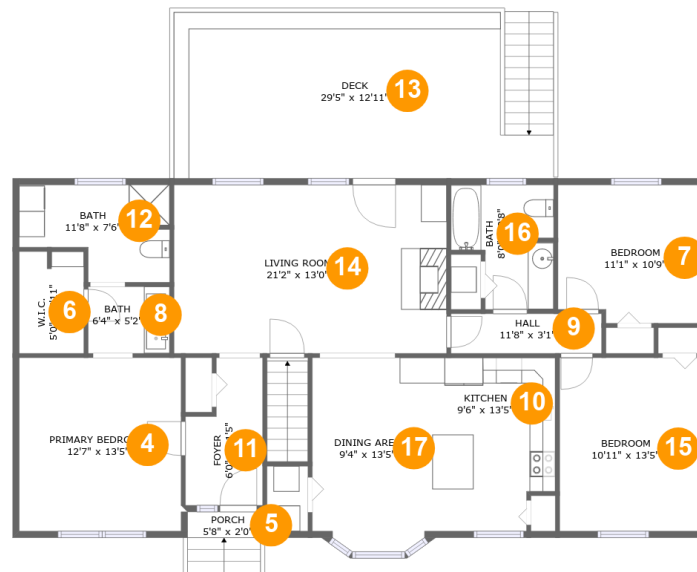
Floor 1

Total sqft: 1421

Living area: 0

| # | | Dimensions | sqft | Counted as living area |
|---|----------|---------------|-------------|------------------------|
| 1 | Bath | 10'9" x 6'3" | 61 sq. ft | No |
| 2 | Room | 10'10" x 6'4" | 68 sq. ft | No |
| 3 | Basement | 52'3" x 25'8" | 1190 sq. ft | No |

1226 Angle Plantation Road, Rocky Mount, Franklin County, Virginia, United States, 24151



Room dimensions

Floor 2

Total sqft: 1852 Living area: 1490

| # | | Dimensions | sqft | Counted as living area |
|----|-------------|----------------|------------|------------------------|
| 4 | Bedroom | 12'7" x 13'5" | 169 sq. ft | Yes |
| 5 | Outdoor | 5'8" x 2'0" | 11 sq. ft | No |
| 6 | Cl | 5'0" x 7'11" | 39 sq. ft | Yes |
| 7 | Bedroom | 11'1" x 10'9" | 115 sq. ft | Yes |
| 8 | Bath | 6'4" x 5'2" | 33 sq. ft | Yes |
| 9 | Hall | 11'8" x 3'1" | 36 sq. ft | Yes |
| 10 | Kitchen | 9'6" x 13'5" | 121 sq. ft | Yes |
| 11 | Entry | 6'0" x 11'5" | 58 sq. ft | Yes |
| 12 | Bath | 11'8" x 7'6" | 73 sq. ft | Yes |
| 13 | Outdoor | 29'5" x 12'11" | 341 sq. ft | No |
| 14 | Living Room | 21'2" x 13'0" | 277 sq. ft | Yes |

Scan captured on Fri, 08 Nov 2024 22:20:30 GMT

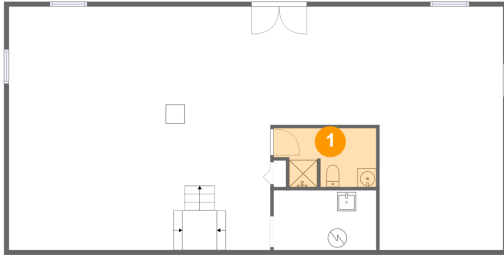
Information is calculated by Cubicasa technology deemed highly reliable but not guaranteed.

1226 Angle Plantation Road, Rocky Mount, Franklin County, Virginia, United States, 24151

| # | | Dimensions | sqft | Counted as living area |
|----|-------------|----------------|------------|------------------------|
| 15 | Bedroom | 10'11" x 13'5" | 147 sq. ft | Yes |
| 16 | Bath | 8'0" x 9'8" | 64 sq. ft | Yes |
| 17 | Dining Room | 9'4" x 13'5" | 126 sq. ft | Yes |

1226 Angle Plantation Road, Rocky Mount, Franklin County, Virginia, United States, 24151

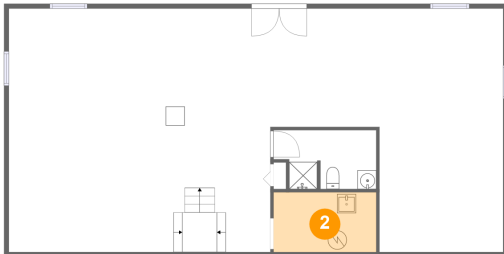
1 Floor 1 - Bath



Dimensions: 10'9" x 6'3"
Area: 61 sq. ft
Counted as living area: No

Heated: Yes
Finished: No
Enclosed: Yes
Contiguous: Yes
Permitted: Yes
Wet space: Yes
Addition: No
Conversion: No

2 Floor 1 - Room

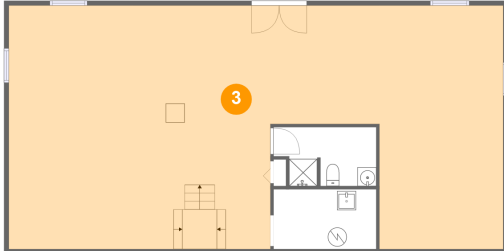


Dimensions: 10'10" x 6'4"
Area: 68 sq. ft
Counted as living area: No

Heated: No
Finished: No
Enclosed: Yes
Contiguous: Yes
Permitted: Yes
Wet space: No
Addition: No
Conversion: No

1226 Angle Plantation Road, Rocky Mount, Franklin County, Virginia, United States, 24151

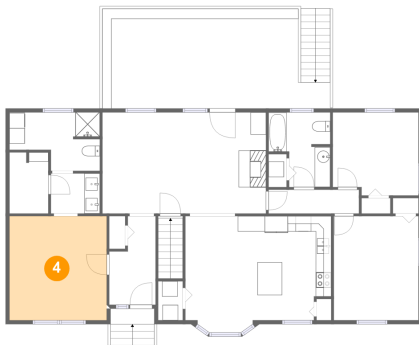
3 Floor 1 - Basement



Dimensions: 52'3" x 25'8"
Area: 1190 sq. ft
Counted as living area: No

Heated: Yes
Finished: No
Enclosed: Yes
Contiguous: Yes
Permitted: Yes
Wet space: No
Addition: No
Conversion: No

4 Floor 2 - Bedroom



Dimensions: 12'7" x 13'5"
Area: 169 sq. ft
Counted as living area: Yes

Heated: Yes
Finished: Yes
Enclosed: Yes
Contiguous: Yes
Permitted: Yes
Wet space: No
Addition: No
Conversion: No

5 Floor 2 - Outdoor



Dimensions: 5'8" x 2'0"
Area: 11 sq. ft
Counted as living area: No

Heated: No
Finished: Yes
Enclosed: No
Contiguous: Yes
Permitted: Yes
Wet space: No
Addition: No
Conversion: No

1226 Angle Plantation Road, Rocky Mount, Franklin County, Virginia, United States, 24151

6 Floor 2 - Cl



Dimensions: 5'0" x 7'11"
Area: 39 sq. ft
Counted as living area: Yes

Heated: Yes
Finished: Yes
Enclosed: Yes
Contiguous: Yes
Permitted: Yes
Wet space: No
Addition: No
Conversion: No

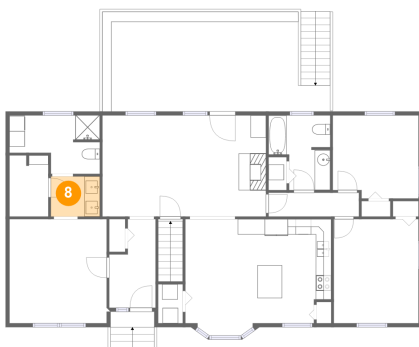
7 Floor 2 - Bedroom



Dimensions: 11'1" x 10'9"
Area: 115 sq. ft
Counted as living area: Yes

Heated: Yes
Finished: Yes
Enclosed: Yes
Contiguous: Yes
Permitted: Yes
Wet space: No
Addition: No
Conversion: No

8 Floor 2 - Bath



Dimensions: 6'4" x 5'2"
Area: 33 sq. ft
Counted as living area: Yes

Heated: Yes
Finished: Yes
Enclosed: Yes
Contiguous: Yes
Permitted: Yes
Wet space: Yes
Addition: No
Conversion: No

1226 Angle Plantation Road, Rocky Mount, Franklin County, Virginia, United States, 24151

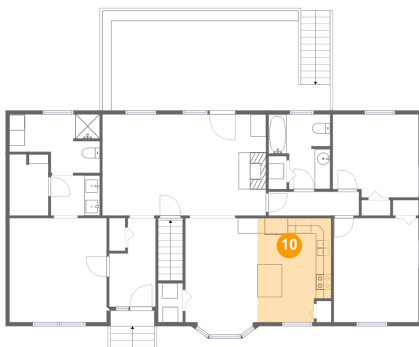
9 Floor 2 - Hall



Dimensions: 11'8" x 3'1"
Area: 36 sq. ft
Counted as living area: Yes

Heated: Yes
Finished: Yes
Enclosed: Yes
Contiguous: Yes
Permitted: Yes
Wet space: No
Addition: No
Conversion: No

10 Floor 2 - Kitchen



Dimensions: 9'6" x 13'5"
Area: 121 sq. ft
Counted as living area: Yes

Heated: Yes
Finished: Yes
Enclosed: Yes
Contiguous: Yes
Permitted: Yes
Wet space: No
Addition: No
Conversion: No

11 Floor 2 - Entry

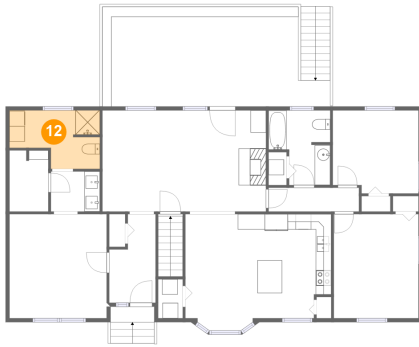


Dimensions: 6'0" x 11'5"
Area: 58 sq. ft
Counted as living area: Yes

Heated: Yes
Finished: Yes
Enclosed: Yes
Contiguous: Yes
Permitted: Yes
Wet space: No
Addition: No
Conversion: No

1226 Angle Plantation Road, Rocky Mount, Franklin County, Virginia, United States, 24151

12 Floor 2 - Bath



Dimensions: 11'8" x 7'6"
Area: 73 sq. ft
Counted as living area: Yes

Heated: Yes
Finished: Yes
Enclosed: Yes
Contiguous: Yes
Permitted: Yes
Wet space: Yes
Addition: No
Conversion: No

13 Floor 2 - Outdoor



Dimensions: 29'5" x 12'11"
Area: 341 sq. ft
Counted as living area: No

Heated: No
Finished: Yes
Enclosed: No
Contiguous: Yes
Permitted: Yes
Wet space: No
Addition: No
Conversion: No

14 Floor 2 - Living Room

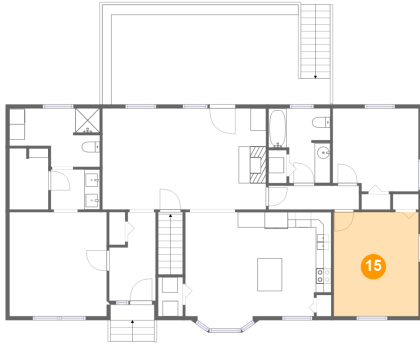


Dimensions: 21'2" x 13'0"
Area: 277 sq. ft
Counted as living area: Yes

Heated: Yes
Finished: Yes
Enclosed: Yes
Contiguous: Yes
Permitted: Yes
Wet space: No
Addition: No
Conversion: No

1226 Angle Plantation Road, Rocky Mount, Franklin County, Virginia, United States, 24151

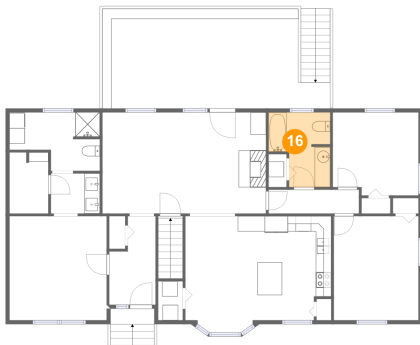
15 Floor 2 - Bedroom



Dimensions: 10'11" x 13'5"
Area: 147 sq. ft
Counted as living area: Yes

Heated: Yes
Finished: Yes
Enclosed: Yes
Contiguous: Yes
Permitted: Yes
Wet space: No
Addition: No
Conversion: No

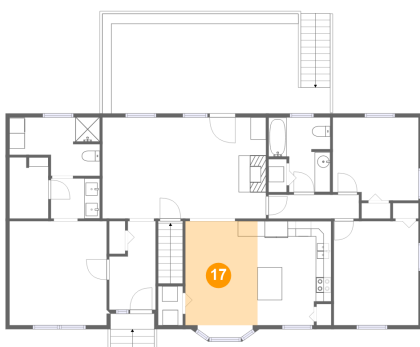
16 Floor 2 - Bath



Dimensions: 8'0" x 9'8"
Area: 64 sq. ft
Counted as living area: Yes

Heated: Yes
Finished: Yes
Enclosed: Yes
Contiguous: Yes
Permitted: Yes
Wet space: Yes
Addition: No
Conversion: No

17 Floor 2 - Dining Room



Dimensions: 9'4" x 13'5"
Area: 126 sq. ft
Counted as living area: Yes

Heated: Yes
Finished: Yes
Enclosed: Yes
Contiguous: Yes
Permitted: Yes
Wet space: No
Addition: No
Conversion: No