


2420 Stanley Avenue Southeast, South Roanoke, Roanoke, Roanoke, Virginia, United States,



Property summary

 **0** Garages

 **4** Bedrooms

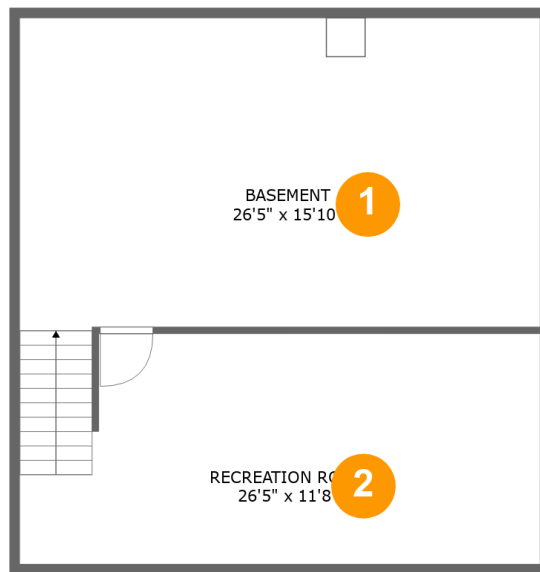
 **2** Bathrooms

 **1** Half baths

 **4** Floors

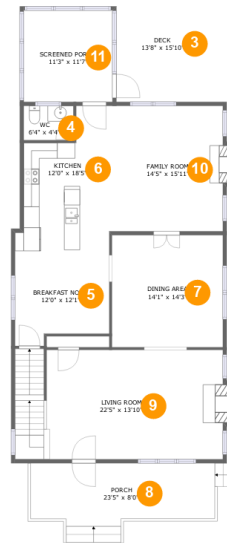
 **2,800** Gross living area sqft

 **4,522** Total sqft

**2420 Stanley Avenue Southeast, South Roanoke,
Roanoke, Roanoke, Virginia, United States,****Room dimensions****Floor 1****Total sqft: 789****Living area: 313**

#		Dimensions	sqft	Counted as living area
1	Basement	26'5" x 15'10"	442 sq. ft	No
2	Recreation Room	26'5" x 11'8"	281 sq. ft	Yes

2420 Stanley Avenue Southeast, South Roanoke, Roanoke, Roanoke, Virginia, United States,



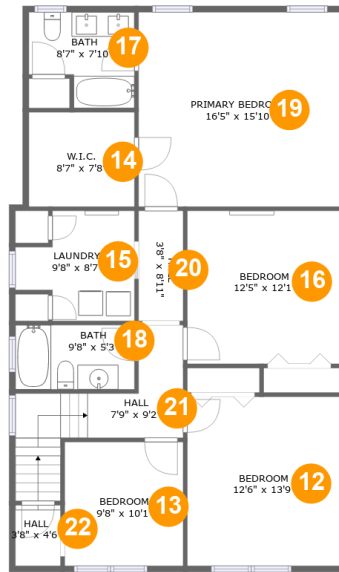
Room dimensions

Floor 2

Total sqft: 1784 Living area: 1243

#		Dimensions	sqft	Counted as living area
3	Outdoor	13'8" x 15'10"	203 sq. ft	No
4	Bath	6'4" x 4'4"	28 sq. ft	Yes
5	Nook	12'0" x 12'1"	132 sq. ft	Yes
6	Kitchen	12'0" x 18'5"	172 sq. ft	Yes
7	Dining Room	14'1" x 14'3"	201 sq. ft	Yes
8	Outdoor	23'5" x 8'0"	172 sq. ft	No
9	Living Room	22'5" x 13'10"	374 sq. ft	Yes
10	Living Room	14'5" x 15'11"	238 sq. ft	Yes
11	Outdoor	11'3" x 11'7"	131 sq. ft	No

2420 Stanley Avenue Southeast, South Roanoke, Roanoke, Roanoke, Virginia, United States,



Room dimensions

Floor 3

Total sqft: 1244

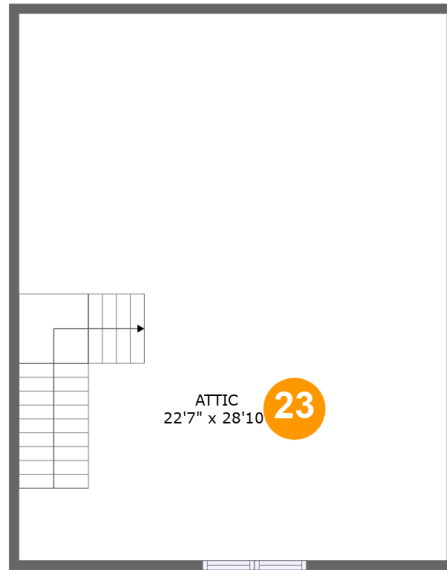
Living area: 1244

#		Dimensions	sqft	Counted as living area
12	Bedroom	12'6" x 13'9"	171 sq. ft	Yes
13	Bedroom	9'8" x 10'1"	97 sq. ft	Yes
14	Cl	8'7" x 7'8"	66 sq. ft	Yes
15	Utility	9'8" x 8'7"	70 sq. ft	Yes
16	Bedroom	12'5" x 12'1"	155 sq. ft	Yes
17	Bath	8'7" x 7'10"	57 sq. ft	Yes
18	Bath	9'8" x 5'3"	51 sq. ft	Yes
19	Bedroom	16'5" x 15'10"	260 sq. ft	Yes
20	Hall	3'8" x 8'11"	32 sq. ft	Yes
21	Hall	7'9" x 9'2"	88 sq. ft	Yes
22	Hall	3'8" x 4'6"	18 sq. ft	Yes

Scan captured on Mon, 04 Nov 2024 20:32:51 GMT

Information is calculated by Cubicasa technology deemed highly reliable but not guaranteed.

2420 Stanley Avenue Southeast, South Roanoke, Roanoke, Roanoke, Virginia, United States,



Room dimensions

Floor 4

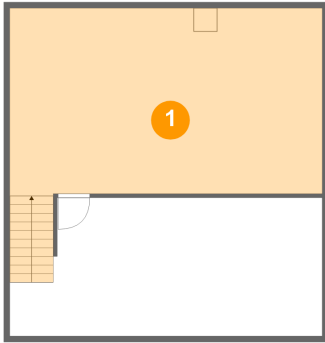
Total sqft: 705

Living area: 0

#		Dimensions	sqft	Counted as living area
23	Attic	22'7" x 28'10"	238 sq. ft	No

2420 Stanley Avenue Southeast, South Roanoke, Roanoke, Roanoke, Virginia, United States,

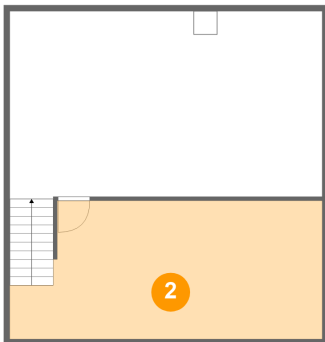
1 Floor 1 - Basement



Dimensions: 26'5" x 15'10"
Area: 442 sq. ft
Counted as living area: No

Heated: Yes
Finished: No
Enclosed: Yes
Contiguous: Yes
Permitted: Yes
Wet space: No
Addition: No
Conversion: No

2 Floor 1 - Recreation Room



Dimensions: 26'5" x 11'8"
Area: 281 sq. ft
Counted as living area: Yes

Heated: Yes
Finished: Yes
Enclosed: Yes
Contiguous: Yes
Permitted: Yes
Wet space: No
Addition: No
Conversion: No

2420 Stanley Avenue Southeast, South Roanoke, Roanoke, Roanoke, Virginia, United States,

3 Floor 2 - Outdoor



Dimensions: 13'8" x 15'10"
Area: 203 sq. ft
Counted as living area: No

Heated: No
Finished: Yes
Enclosed: No
Contiguous: Yes
Permitted: Yes
Wet space: No
Addition: No
Conversion: No

4 Floor 2 - Bath



Dimensions: 6'4" x 4'4"
Area: 28 sq. ft
Counted as living area: Yes

Heated: Yes
Finished: Yes
Enclosed: Yes
Contiguous: Yes
Permitted: Yes
Wet space: Yes
Addition: No
Conversion: No

5 Floor 2 - Nook



Dimensions: 12'0" x 12'1"
Area: 132 sq. ft
Counted as living area: Yes

Heated: Yes
Finished: Yes
Enclosed: Yes
Contiguous: Yes
Permitted: Yes
Wet space: No
Addition: No
Conversion: No

2420 Stanley Avenue Southeast, South Roanoke, Roanoke, Roanoke, Virginia, United States,

6 Floor 2 - Kitchen



Dimensions: 12'0" x 18'5"
Area: 172 sq. ft
Counted as living area: Yes

Heated: Yes
Finished: Yes
Enclosed: Yes
Contiguous: Yes
Permitted: Yes
Wet space: No
Addition: No
Conversion: No

7 Floor 2 - Dining Room



Dimensions: 14'1" x 14'3"
Area: 201 sq. ft
Counted as living area: Yes

Heated: Yes
Finished: Yes
Enclosed: Yes
Contiguous: Yes
Permitted: Yes
Wet space: No
Addition: No
Conversion: No

8 Floor 2 - Outdoor



Dimensions: 23'5" x 8'0"
Area: 172 sq. ft
Counted as living area: No

Heated: No
Finished: Yes
Enclosed: No
Contiguous: Yes
Permitted: Yes
Wet space: No
Addition: No
Conversion: No

2420 Stanley Avenue Southeast, South Roanoke, Roanoke, Roanoke, Virginia, United States,

9 Floor 2 - Living Room



Dimensions: 22'5" x 13'10"
Area: 374 sq. ft
Counted as living area: Yes

Heated: Yes
Finished: Yes
Enclosed: Yes
Contiguous: Yes
Permitted: Yes
Wet space: No
Addition: No
Conversion: No

10 Floor 2 - Living Room



Dimensions: 14'5" x 15'11"
Area: 238 sq. ft
Counted as living area: Yes

Heated: Yes
Finished: Yes
Enclosed: Yes
Contiguous: Yes
Permitted: Yes
Wet space: No
Addition: No
Conversion: No

11 Floor 2 - Outdoor

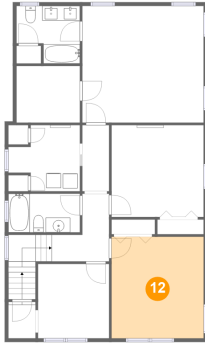


Dimensions: 11'3" x 11'7"
Area: 131 sq. ft
Counted as living area: No

Heated: No
Finished: Yes
Enclosed: No
Contiguous: Yes
Permitted: Yes
Wet space: No
Addition: No
Conversion: No

2420 Stanley Avenue Southeast, South Roanoke, Roanoke, Roanoke, Virginia, United States,

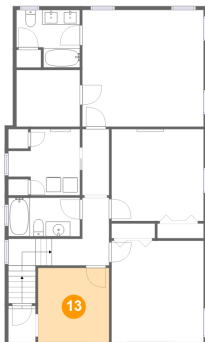
12 Floor 3 - Bedroom



Dimensions: 12'6" x 13'9"
Area: 171 sq. ft
Counted as living area: Yes

Heated: Yes
Finished: Yes
Enclosed: Yes
Contiguous: Yes
Permitted: Yes
Wet space: No
Addition: No
Conversion: No

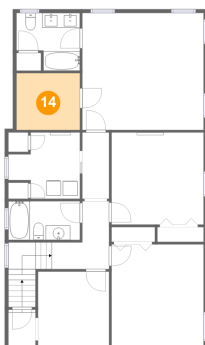
13 Floor 3 - Bedroom



Dimensions: 9'8" x 10'1"
Area: 97 sq. ft
Counted as living area: Yes

Heated: Yes
Finished: Yes
Enclosed: Yes
Contiguous: Yes
Permitted: Yes
Wet space: No
Addition: No
Conversion: No

14 Floor 3 - Cl

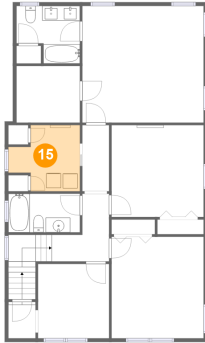


Dimensions: 8'7" x 7'8"
Area: 66 sq. ft
Counted as living area: Yes

Heated: Yes
Finished: Yes
Enclosed: Yes
Contiguous: Yes
Permitted: Yes
Wet space: No
Addition: No
Conversion: No

2420 Stanley Avenue Southeast, South Roanoke, Roanoke, Roanoke, Virginia, United States,

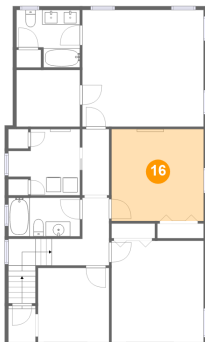
15 Floor 3 - Utility



Dimensions: 9'8" x 8'7"
Area: 70 sq. ft
Counted as living area: Yes

Heated: Yes
Finished: Yes
Enclosed: Yes
Contiguous: Yes
Permitted: Yes
Wet space: No
Addition: No
Conversion: No

16 Floor 3 - Bedroom



Dimensions: 12'5" x 12'1"
Area: 155 sq. ft
Counted as living area: Yes

Heated: Yes
Finished: Yes
Enclosed: Yes
Contiguous: Yes
Permitted: Yes
Wet space: No
Addition: No
Conversion: No

17 Floor 3 - Bath

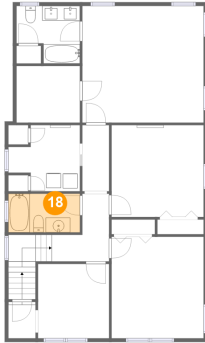


Dimensions: 8'7" x 7'10"
Area: 57 sq. ft
Counted as living area: Yes

Heated: Yes
Finished: Yes
Enclosed: Yes
Contiguous: Yes
Permitted: Yes
Wet space: Yes
Addition: No
Conversion: No

2420 Stanley Avenue Southeast, South Roanoke, Roanoke, Roanoke, Virginia, United States,

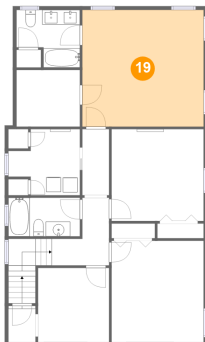
18 Floor 3 - Bath



Dimensions: 9'8" x 5'3"
Area: 51 sq. ft
Counted as living area: Yes

Heated: Yes
Finished: Yes
Enclosed: Yes
Contiguous: Yes
Permitted: Yes
Wet space: Yes
Addition: No
Conversion: No

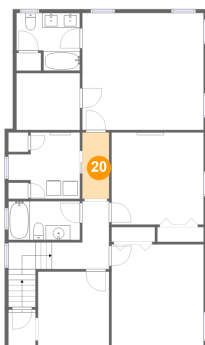
19 Floor 3 - Bedroom



Dimensions: 16'5" x 15'10"
Area: 260 sq. ft
Counted as living area: Yes

Heated: Yes
Finished: Yes
Enclosed: Yes
Contiguous: Yes
Permitted: Yes
Wet space: No
Addition: No
Conversion: No

20 Floor 3 - Hall

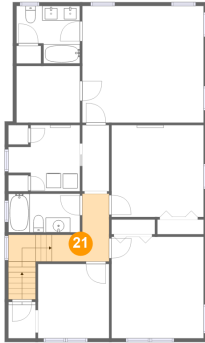


Dimensions: 3'8" x 8'11"
Area: 32 sq. ft
Counted as living area: Yes

Heated: Yes
Finished: Yes
Enclosed: Yes
Contiguous: Yes
Permitted: Yes
Wet space: No
Addition: No
Conversion: No

2420 Stanley Avenue Southeast, South Roanoke, Roanoke, Roanoke, Virginia, United States,

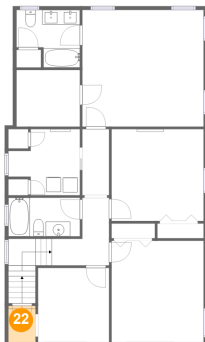
21 Floor 3 - Hall



Dimensions: 7'9" x 9'2"
Area: 88 sq. ft
Counted as living area: Yes

Heated: Yes
Finished: Yes
Enclosed: Yes
Contiguous: Yes
Permitted: Yes
Wet space: No
Addition: No
Conversion: No

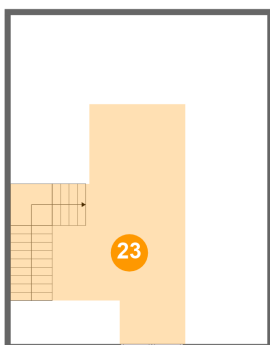
22 Floor 3 - Hall



Dimensions: 3'8" x 4'6"
Area: 18 sq. ft
Counted as living area: Yes

Heated: Yes
Finished: Yes
Enclosed: Yes
Contiguous: Yes
Permitted: Yes
Wet space: No
Addition: No
Conversion: No

23 Floor 4 - Attic



Dimensions: 22'7" x 28'10"
Area: 238 sq. ft
Counted as living area: No

Heated: No
Finished: No
Enclosed: Yes
Contiguous: Yes
Permitted: Yes
Wet space: No
Addition: No
Conversion: No