

Home report

6530 68th Street North, Pinellas Park, Pinellas County, Florida,  
United States, 33781



**Total Area: 1678 sq. ft**

Floor 1: 1678 sq. ft

Excluded: Outdoor Porch Screen 368 sq. ft, Walls: 122 sq. ft

Property summary

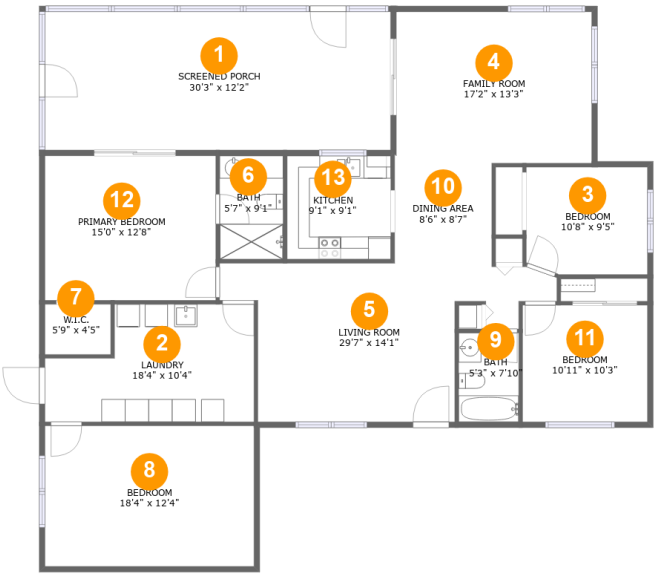
 **1** Floors

 **4** Bedrooms

 **2** Bathrooms

Home report

6530 68th Street North, Pinellas Park, Pinellas County, Florida,  
United States, 33781



Room dimensions

Floor 1 Total:1678sqft   Excluded: 368sqft

#		Max Dimensions	sqft	Included
1	Screened Porch	30'3" x 12'2"	368 sq. ft	No
2	Laundry	18'4" x 10'4"	160 sq. ft	Yes
3	Bedroom	10'8" x 9'5"	99 sq. ft	Yes
4	Family Room	17'2" x 13'3"	228 sq. ft	Yes
5	Living Room	29'7" x 14'1"	287 sq. ft	Yes
6	Bath	5'7" x 9'1"	51 sq. ft	Yes
7	W.I.C.	5'9" x 4'5"	25 sq. ft	Yes
8	Bedroom	18'4" x 12'4"	226 sq. ft	Yes
9	Bath	5'3" x 7'10"	41 sq. ft	Yes
10	Dining Area	8'6" x 8'7"	73 sq. ft	Yes
11	Bedroom	10'11" x 10'3"	112 sq. ft	Yes

Home report

6530 68th Street North, Pinellas Park, Pinellas County, Florida,  
United States, 33781

#		Max Dimensions	sqft	Included
12	Primary Bedroom	15'0" x 12'8"	190 sq. ft	Yes
13	Kitchen	9'1" x 9'1"	83 sq. ft	Yes

6530 68th Street North, Pinellas Park, Pinellas County, Florida,  
United States, 33781

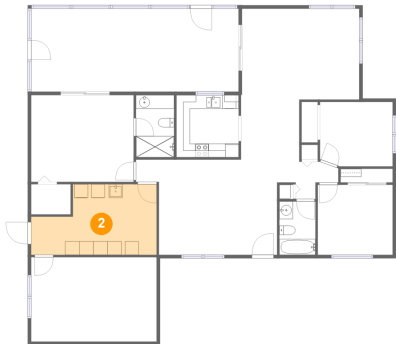
1 Floor 1 - Screened Porch



Max Dimensions: 30'3" x 12'2"  
Calculated Area: 368 sq. ft  
Included: No

Heated: No  
Finished: Yes  
Enclosed: No  
Contiguous: Yes  
Permitted: Yes  
Wet space: No  
Addition: No  
Conversion: No

2 Floor 1 - Laundry



Max Dimensions: 18'4" x 10'4"  
Calculated Area: 160 sq. ft  
Included: Yes

Heated: Yes  
Finished: Yes  
Enclosed: Yes  
Contiguous: Yes  
Permitted: Yes  
Wet space: No  
Addition: No  
Conversion: No

3 Floor 1 - Bedroom



Max Dimensions: 10'8" x 9'5"  
Calculated Area: 99 sq. ft  
Included: Yes

Heated: Yes  
Finished: Yes  
Enclosed: Yes  
Contiguous: Yes  
Permitted: Yes  
Wet space: No  
Addition: No  
Conversion: No

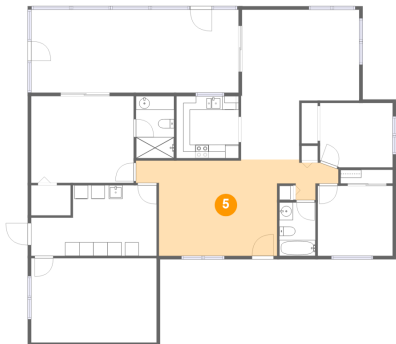
4 Floor 1 - Family Room



Max Dimensions: 17'2" x 13'3"  
Calculated Area: 228 sq. ft  
Included: Yes

Heated: Yes  
Finished: Yes  
Enclosed: Yes  
Contiguous: Yes  
Permitted: Yes  
Wet space: No  
Addition: No  
Conversion: No

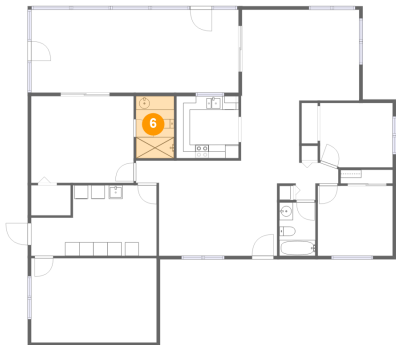
5 Floor 1 - Living Room



Max Dimensions: 29'7" x 14'1"  
Calculated Area: 287 sq. ft  
Included: Yes

Heated: Yes  
Finished: Yes  
Enclosed: Yes  
Contiguous: Yes  
Permitted: Yes  
Wet space: No  
Addition: No  
Conversion: No

6 Floor 1 - Bath



Max Dimensions: 5'7" x 9'1"  
Calculated Area: 51 sq. ft  
Included: Yes

Heated: Yes  
Finished: Yes  
Enclosed: Yes  
Contiguous: Yes  
Permitted: Yes  
Wet space: Yes  
Addition: No  
Conversion: No

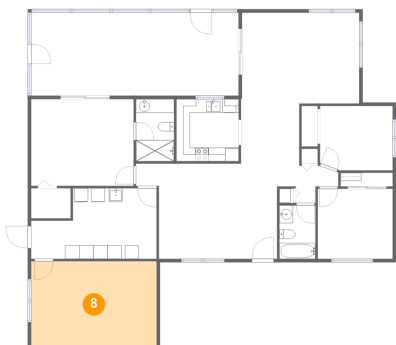
7 Floor 1 - W.I.C.



Max Dimensions: 5'9" x 4'5"  
Calculated Area: 25 sq. ft  
Included: Yes

Heated: Yes  
Finished: Yes  
Enclosed: Yes  
Contiguous: Yes  
Permitted: Yes  
Wet space: No  
Addition: No  
Conversion: No

8 Floor 1 - Bedroom



Max Dimensions: 18'4" x 12'4"  
Calculated Area: 226 sq. ft  
Included: Yes

Heated: Yes  
Finished: Yes  
Enclosed: Yes  
Contiguous: Yes  
Permitted: Yes  
Wet space: No  
Addition: No  
Conversion: No

9 Floor 1 - Bath



Max Dimensions: 5'3" x 7'10"  
Calculated Area: 41 sq. ft  
Included: Yes

Heated: Yes  
Finished: Yes  
Enclosed: Yes  
Contiguous: Yes  
Permitted: Yes  
Wet space: Yes  
Addition: No  
Conversion: No

10 Floor 1 - Dining Area



Max Dimensions: 8'6" x 8'7"  
Calculated Area: 73 sq. ft  
Included: Yes

Heated: Yes  
Finished: Yes  
Enclosed: Yes  
Contiguous: Yes  
Permitted: Yes  
Wet space: No  
Addition: No  
Conversion: No

11 Floor 1 - Bedroom



Max Dimensions: 10'11" x 10'3"  
Calculated Area: 112 sq. ft  
Included: Yes

Heated: Yes  
Finished: Yes  
Enclosed: Yes  
Contiguous: Yes  
Permitted: Yes  
Wet space: No  
Addition: No  
Conversion: No

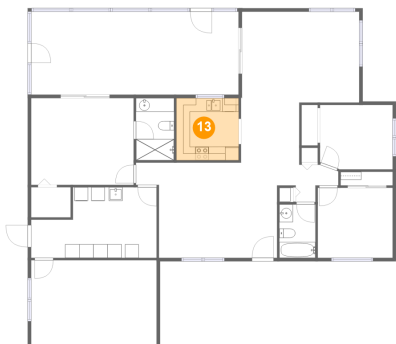
12 Floor 1 - Primary Bedroom



Max Dimensions: 15'0" x 12'8"  
Calculated Area: 190 sq. ft  
Included: Yes

Heated: Yes  
Finished: Yes  
Enclosed: Yes  
Contiguous: Yes  
Permitted: Yes  
Wet space: No  
Addition: No  
Conversion: No

13 Floor 1 - Kitchen



Max Dimensions: 9'1" x 9'1"  
Calculated Area: 83 sq. ft  
Included: Yes

Heated: Yes  
Finished: Yes  
Enclosed: Yes  
Contiguous: Yes  
Permitted: Yes  
Wet space: No  
Addition: No  
Conversion: No