

Home data report

22421 S Acorn Way,Lewes,DE,US



Total Area: 2062 sq. ft

Below Ground: 648 sq. ft, 1st Floor: 1414 sq. ft

Excluded: Utility 400 sq. ft, Storage 295 sq. ft, Garage 379 sq. ft, Porch 53 sq. ft, Patio 376 sq. ft, Fireplace 10 sq. ft, Walls: 206 sq. ft

Property summary

 **2** Floors

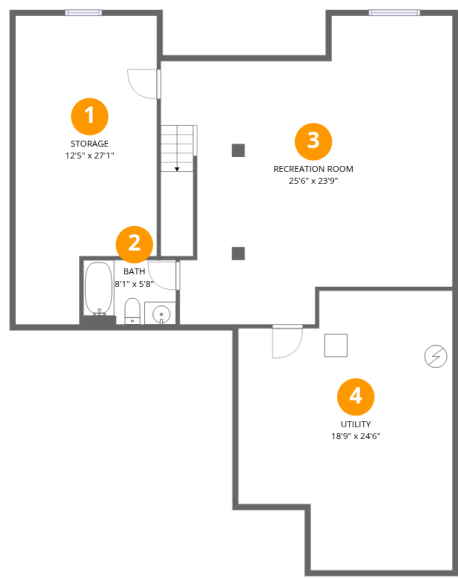
 **2** Bedrooms

 **3** Bathrooms

 **1** Garages

Home data report

22421 S Acorn Way,Lewes,DE,US



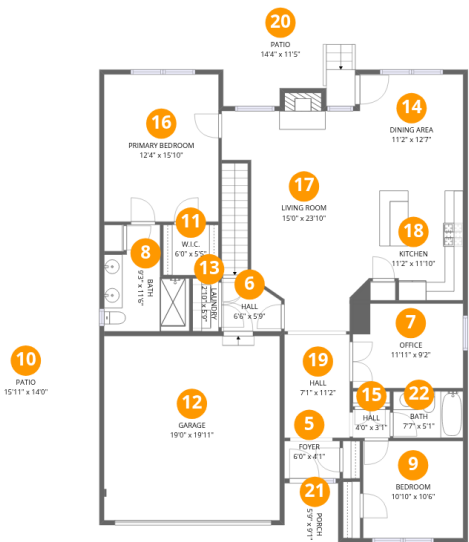
Room dimensions

Floor 1 Below grade Total:648sqft Excluded: 695sqft

#		Dimensions	sqft	Counted as living area
1	Storage	12'5" x 27'1"	295 sq. ft	No
2	Bath	8'1" x 5'8"	46 sq. ft	Yes
3	Recreation Room	25'6" x 23'9"	579 sq. ft	Yes
4	Utility	18'9" x 24'6"	400 sq. ft	No

Home data report

22421 S Acorn Way,Lewes,DE,US



Room dimensions

Floor 2 Total:1414sqft Excluded: 818sqft

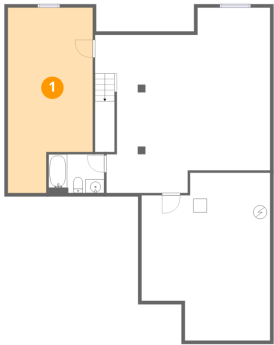
#		Dimensions	sqft	Counted as living area
5	Foyer	6'0" x 4'1"	24 sq. ft	Yes
6	Hall	6'6" x 5'9"	33 sq. ft	Yes
7	Office	11'11" x 9'2"	109 sq. ft	Yes
8	Bath	9'3" x 11'6"	80 sq. ft	Yes
9	Bedroom	10'10" x 10'6"	114 sq. ft	Yes
10	Patio	15'11" x 14'0"	223 sq. ft	No
11	W.I.C.	6'0" x 5'5"	33 sq. ft	Yes
12	Garage	19'0" x 19'11"	379 sq. ft	No
13	Laundry	2'10" x 5'9"	16 sq. ft	Yes
14	Dining Area	11'2" x 12'7"	141 sq. ft	Yes
15	Hall	4'0" x 3'1"	12 sq. ft	Yes

Home data report

22421 S Acorn Way,Lewes,DE,US

#		Dimensions	sqft	Counted as living area
16	Primary Bedroom	12'4" x 15'10"	198 sq. ft	Yes
17	Living Room	15'0" x 23'10"	284 sq. ft	Yes
18	Kitchen	11'2" x 11'10"	123 sq. ft	Yes
19	Hall	7'1" x 11'2"	79 sq. ft	Yes
20	Patio	14'4" x 11'5"	153 sq. ft	No
21	Porch	5'9" x 9'1"	53 sq. ft	No
22	Bath	7'7" x 5'1"	38 sq. ft	Yes

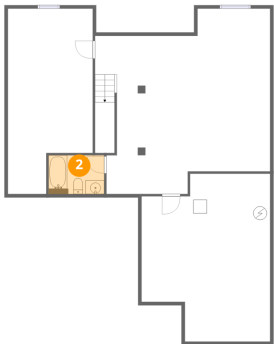
1 Floor 1 - Storage



Dimensions: 12'5" x 27'1"
Area: 295 sq. ft
Counted as living area: No

Heated: No
Finished: No
Enclosed: No
Contiguous: Yes
Permitted: Yes
Wet space: No
Addition: No
Conversion: No

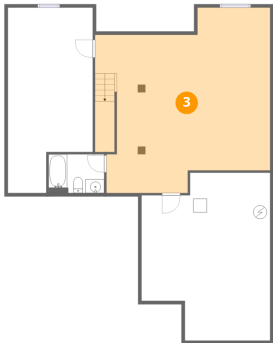
2 Floor 1 - Bath



Dimensions: 8'1" x 5'8"
Area: 46 sq. ft
Counted as living area: Yes

Heated: Yes
Finished: Yes
Enclosed: Yes
Contiguous: Yes
Permitted: Yes
Wet space: Yes
Addition: No
Conversion: No

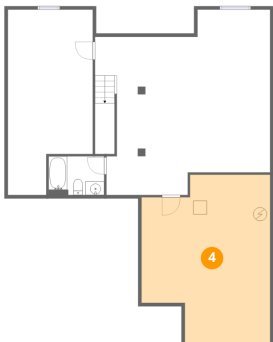
3 Floor 1 - Recreation Room



Dimensions: 25'6" x 23'9"
Area: 579 sq. ft
Counted as living area: Yes

Heated: Yes
Finished: Yes
Enclosed: Yes
Contiguous: Yes
Permitted: Yes
Wet space: No
Addition: No
Conversion: No

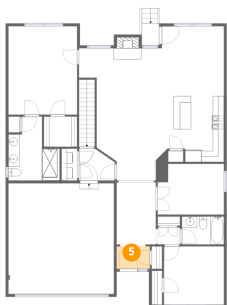
4 Floor 1 - Utility



Dimensions: 18'9" x 24'6"
Area: 400 sq. ft
Counted as living area: No

Heated: Yes
Finished: No
Enclosed: Yes
Contiguous: Yes
Permitted: Yes
Wet space: No
Addition: No
Conversion: No

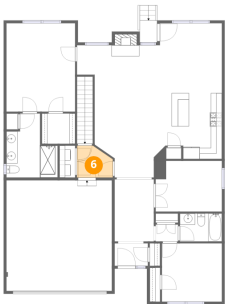
5 Floor 2 - Foyer



Dimensions: 6'0" x 4'1"
Area: 24 sq. ft
Counted as living area: Yes

Heated: Yes
Finished: Yes
Enclosed: Yes
Contiguous: Yes
Permitted: Yes
Wet space: No
Addition: No
Conversion: No

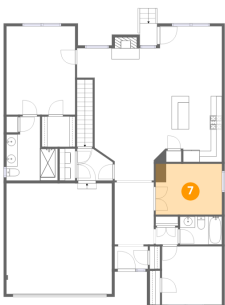
6 Floor 2 - Hall



Dimensions: 6'6" x 5'9"
Area: 33 sq. ft
Counted as living area: Yes

Heated: Yes
Finished: Yes
Enclosed: Yes
Contiguous: Yes
Permitted: Yes
Wet space: No
Addition: No
Conversion: No

7 Floor 2 - Office



Dimensions: 11'11" x 9'2"
Area: 109 sq. ft
Counted as living area: Yes

Heated: Yes
Finished: Yes
Enclosed: Yes
Contiguous: Yes
Permitted: Yes
Wet space: No
Addition: No
Conversion: No

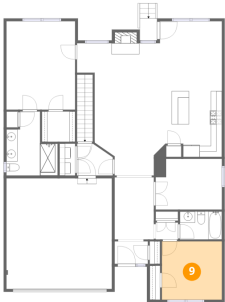
8 Floor 2 - Bath



Dimensions: 9'3" x 11'6"
Area: 80 sq. ft
Counted as living area: Yes

Heated: Yes
Finished: Yes
Enclosed: Yes
Contiguous: Yes
Permitted: Yes
Wet space: Yes
Addition: No
Conversion: No

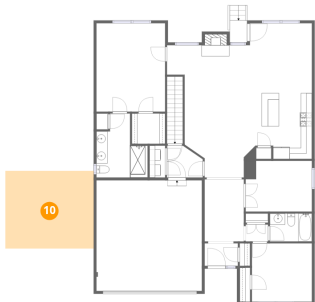
9 Floor 2 - Bedroom



Dimensions: 10'10" x 10'6"
Area: 114 sq. ft
Counted as living area: Yes

Heated: Yes
Finished: Yes
Enclosed: Yes
Contiguous: Yes
Permitted: Yes
Wet space: No
Addition: No
Conversion: No

10 Floor 2 - Patio



Dimensions: 15'11" x 14'0"
Area: 223 sq. ft
Counted as living area: No

Heated: No
Finished: No
Enclosed: No
Contiguous: Yes
Permitted: Yes
Wet space: No
Addition: No
Conversion: No

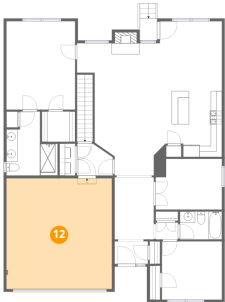
11 Floor 2 - W.I.C.



Dimensions: 6'0" x 5'5"
Area: 33 sq. ft
Counted as living area: Yes

Heated: Yes
Finished: Yes
Enclosed: Yes
Contiguous: Yes
Permitted: Yes
Wet space: No
Addition: No
Conversion: No

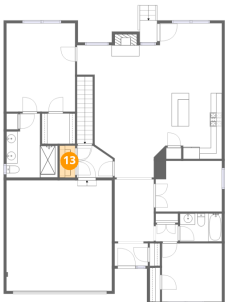
12 Floor 2 - Garage



Dimensions: 19'0" x 19'11"
Area: 379 sq. ft
Counted as living area: No

Heated: No
Finished: No
Enclosed: Yes
Contiguous: Yes
Permitted: Yes
Wet space: No
Addition: No
Conversion: No

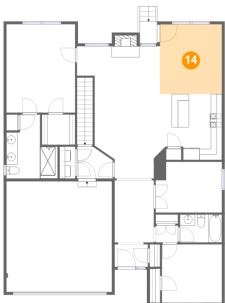
13 Floor 2 - Laundry



Dimensions: 2'10" x 5'9"
Area: 16 sq. ft
Counted as living area: Yes

Heated: Yes
Finished: Yes
Enclosed: Yes
Contiguous: Yes
Permitted: Yes
Wet space: No
Addition: No
Conversion: No

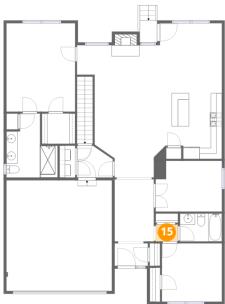
14 Floor 2 - Dining Area



Dimensions: 11'2" x 12'7"
Area: 141 sq. ft
Counted as living area: Yes

Heated: Yes
Finished: Yes
Enclosed: Yes
Contiguous: Yes
Permitted: Yes
Wet space: No
Addition: No
Conversion: No

15 Floor 2 - Hall



Dimensions: 4'0" x 3'1"
Area: 12 sq. ft
Counted as living area: Yes

Heated: Yes
Finished: Yes
Enclosed: Yes
Contiguous: Yes
Permitted: Yes
Wet space: No
Addition: No
Conversion: No

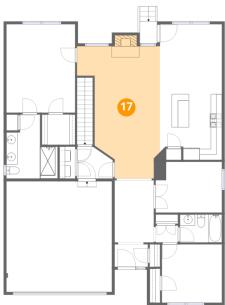
16 Floor 2 - Primary Bedroom



Dimensions: 12'4" x 15'10"
Area: 198 sq. ft
Counted as living area: Yes

Heated: Yes
Finished: Yes
Enclosed: Yes
Contiguous: Yes
Permitted: Yes
Wet space: No
Addition: No
Conversion: No

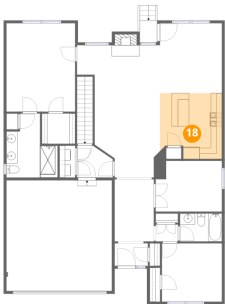
17 Floor 2 - Living Room



Dimensions: 15'0" x 23'10"
Area: 284 sq. ft
Counted as living area: Yes

Heated: Yes
Finished: Yes
Enclosed: Yes
Contiguous: Yes
Permitted: Yes
Wet space: No
Addition: No
Conversion: No

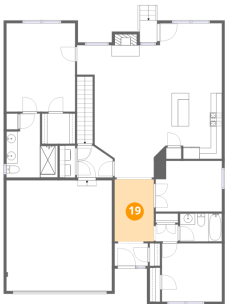
18 Floor 2 - Kitchen



Dimensions: 11'2" x 11'10"
Area: 123 sq. ft
Counted as living area: Yes

Heated: Yes
Finished: Yes
Enclosed: Yes
Contiguous: Yes
Permitted: Yes
Wet space: No
Addition: No
Conversion: No

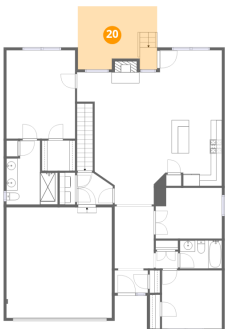
19 Floor 2 - Hall



Dimensions: 7'1" x 11'2"
Area: 79 sq. ft
Counted as living area: Yes

Heated: Yes
Finished: Yes
Enclosed: Yes
Contiguous: Yes
Permitted: Yes
Wet space: No
Addition: No
Conversion: No

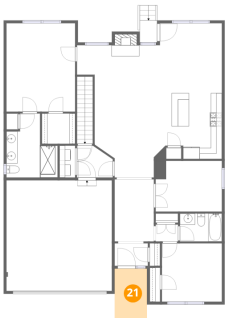
20 Floor 2 - Patio



Dimensions: 14'4" x 11'5"
Area: 153 sq. ft
Counted as living area: No

Heated: No
Finished: No
Enclosed: No
Contiguous: Yes
Permitted: Yes
Wet space: No
Addition: No
Conversion: No

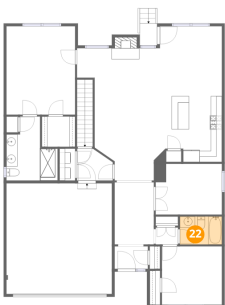
21 Floor 2 - Porch



Dimensions: 5'9" x 9'1"
Area: 53 sq. ft
Counted as living area: No

Heated: No
Finished: No
Enclosed: No
Contiguous: Yes
Permitted: Yes
Wet space: No
Addition: No
Conversion: No

22 Floor 2 - Bath



Dimensions: 7'7" x 5'1"
Area: 38 sq. ft
Counted as living area: Yes

Heated: Yes
Finished: Yes
Enclosed: Yes
Contiguous: Yes
Permitted: Yes
Wet space: Yes
Addition: No
Conversion: No