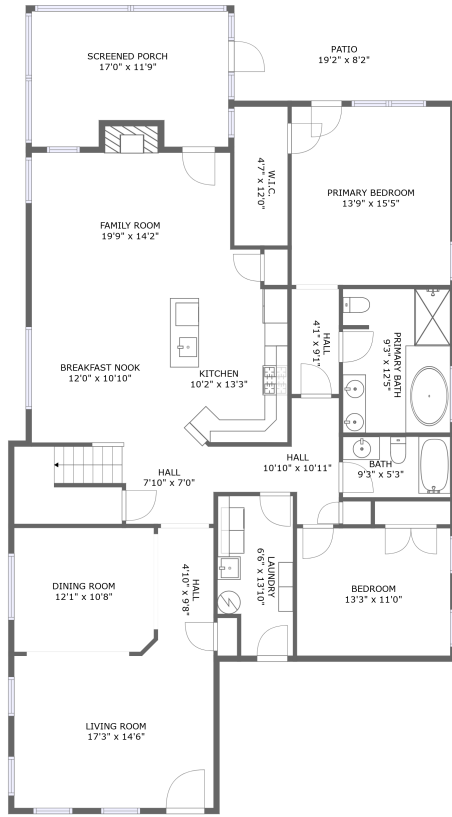
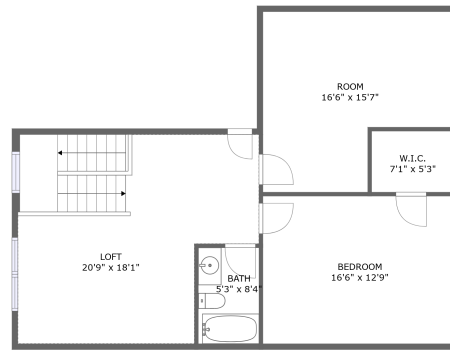


48 Canvasback Circle, Bridgeville, Sussex County, Delaware, United States, 19933




FLOOR 1



FLOOR 2

Property summary


 **0** Garages

 **3** Bedrooms

 **3** Bathrooms

 **0** Half baths

 **2** Floors

 **2,922** Gross living area sqft

 **3,298** Total sqft

48 Canvasback Circle, Bridgeville, Sussex County, Delaware, United States, 19933



Room dimensions

Floor 1

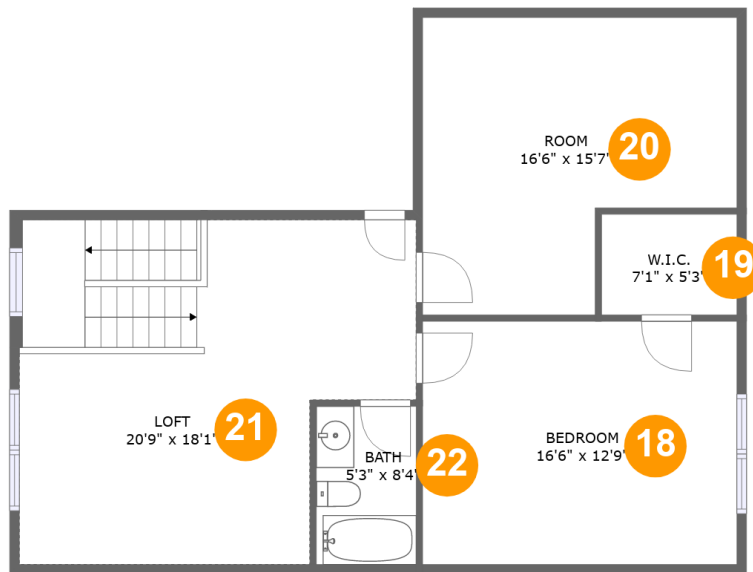
Total sqft: 2375 Living area: 1999

#		Dimensions	sqft	Counted as living area
1	Hall	10'10" x 10'11"	70 sq. ft	Yes
2	Patio	19'2" x 8'2"	158 sq. ft	No
3	Screened Porch	17'0" x 11'9"	186 sq. ft	No
4	Bath	9'3" x 5'3"	49 sq. ft	Yes
5	Bedroom	13'3" x 11'0"	146 sq. ft	Yes
6	Hall	4'10" x 9'8"	47 sq. ft	Yes
7	Kitchen	10'2" x 13'3"	135 sq. ft	Yes
8	Hall	4'1" x 9'1"	37 sq. ft	Yes
9	Dining Room	12'1" x 10'8"	129 sq. ft	Yes
10	Hall	7'10" x 7'0"	115 sq. ft	Yes
11	Laundry	6'6" x 13'10"	83 sq. ft	Yes

**48 Canvasback Circle, Bridgeville, Sussex County,
Delaware, United States, 19933**

#		Dimensions	sqft	Counted as living area
12	Primary Bath	9'3" x 12'5"	115 sq. ft	Yes
13	Breakfast Nook	12'0" x 10'10"	130 sq. ft	Yes
14	Living Room	17'3" x 14'6"	234 sq. ft	Yes
15	Primary Bedroom	13'9" x 15'5"	211 sq. ft	Yes
16	Family Room	19'9" x 14'2"	251 sq. ft	Yes
17	W.I.C.	4'7" x 12'0"	55 sq. ft	Yes

48 Canvasback Circle, Bridgeville, Sussex County, Delaware, United States, 19933



Room dimensions

Floor 2

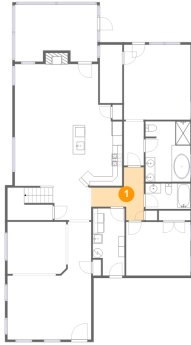
Total sqft: 923

Living area: 923

#		Dimensions	sqft	Counted as living area
18	Bedroom	16'6" x 12'9"	210 sq. ft	Yes
19	W.I.C.	7'1" x 5'3"	37 sq. ft	Yes
20	Room	16'6" x 15'7"	216 sq. ft	Yes
21	Loft	20'9" x 18'1"	327 sq. ft	Yes
22	Bath	5'3" x 8'4"	43 sq. ft	Yes

48 Canvasback Circle, Bridgeville, Sussex County, Delaware, United States, 19933

1 Floor 1 - Hall



Dimensions: 10'10" x 10'11"
Area: 70 sq. ft
Counted as living area: Yes

Heated: Yes
Finished: Yes
Enclosed: Yes
Contiguous: Yes
Permitted: Yes
Wet space: No
Addition: No
Conversion: No

2 Floor 1 - Patio

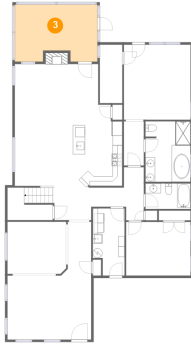


Dimensions: 19'2" x 8'2"
Area: 158 sq. ft
Counted as living area: No

Heated: No
Finished: Yes
Enclosed: No
Contiguous: Yes
Permitted: Yes
Wet space: No
Addition: No
Conversion: No

48 Canvasback Circle, Bridgeville, Sussex County, Delaware, United States, 19933

3 Floor 1 - Screened Porch



Dimensions: 17'0" x 11'9"
Area: 186 sq. ft
Counted as living area: No

Heated: No
Finished: Yes
Enclosed: No
Contiguous: Yes
Permitted: Yes
Wet space: No
Addition: No
Conversion: No

4 Floor 1 - Bath



Dimensions: 9'3" x 5'3"
Area: 49 sq. ft
Counted as living area: Yes

Heated: Yes
Finished: Yes
Enclosed: Yes
Contiguous: Yes
Permitted: Yes
Wet space: Yes
Addition: No
Conversion: No

5 Floor 1 - Bedroom



Dimensions: 13'3" x 11'0"
Area: 146 sq. ft
Counted as living area: Yes

Heated: Yes
Finished: Yes
Enclosed: Yes
Contiguous: Yes
Permitted: Yes
Wet space: No
Addition: No
Conversion: No

48 Canvasback Circle, Bridgeville, Sussex County, Delaware, United States, 19933

6 Floor 1 - Hall



Dimensions: 4'10" x 9'8"
Area: 47 sq. ft
Counted as living area: Yes

Heated: Yes
Finished: Yes
Enclosed: Yes
Contiguous: Yes
Permitted: Yes
Wet space: No
Addition: No
Conversion: No

7 Floor 1 - Kitchen



Dimensions: 10'2" x 13'3"
Area: 135 sq. ft
Counted as living area: Yes

Heated: Yes
Finished: Yes
Enclosed: Yes
Contiguous: Yes
Permitted: Yes
Wet space: No
Addition: No
Conversion: No

8 Floor 1 - Hall



Dimensions: 4'1" x 9'1"
Area: 37 sq. ft
Counted as living area: Yes

Heated: Yes
Finished: Yes
Enclosed: Yes
Contiguous: Yes
Permitted: Yes
Wet space: No
Addition: No
Conversion: No

48 Canvasback Circle, Bridgeville, Sussex County, Delaware, United States, 19933

9 Floor 1 - Dining Room



Dimensions: 12'1" x 10'8"
Area: 129 sq. ft
Counted as living area: Yes

Heated: Yes
Finished: Yes
Enclosed: Yes
Contiguous: Yes
Permitted: Yes
Wet space: No
Addition: No
Conversion: No

10 Floor 1 - Hall



Dimensions: 7'10" x 7'0"
Area: 115 sq. ft
Counted as living area: Yes

Heated: Yes
Finished: Yes
Enclosed: Yes
Contiguous: Yes
Permitted: Yes
Wet space: No
Addition: No
Conversion: No

11 Floor 1 - Laundry

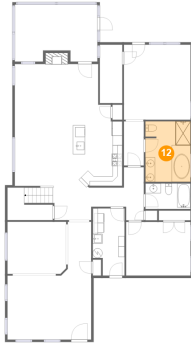


Dimensions: 6'6" x 13'10"
Area: 83 sq. ft
Counted as living area: Yes

Heated: Yes
Finished: Yes
Enclosed: Yes
Contiguous: Yes
Permitted: Yes
Wet space: No
Addition: No
Conversion: No

48 Canvasback Circle, Bridgeville, Sussex County, Delaware, United States, 19933

12 Floor 1 - Primary Bath



Dimensions: 9'3" x 12'5"
Area: 115 sq. ft
Counted as living area: Yes

Heated: Yes
Finished: Yes
Enclosed: Yes
Contiguous: Yes
Permitted: Yes
Wet space: Yes
Addition: No
Conversion: No

13 Floor 1 - Breakfast Nook



Dimensions: 12'0" x 10'10"
Area: 130 sq. ft
Counted as living area: Yes

Heated: Yes
Finished: Yes
Enclosed: Yes
Contiguous: Yes
Permitted: Yes
Wet space: No
Addition: No
Conversion: No

14 Floor 1 - Living Room



Dimensions: 17'3" x 14'6"
Area: 234 sq. ft
Counted as living area: Yes

Heated: Yes
Finished: Yes
Enclosed: Yes
Contiguous: Yes
Permitted: Yes
Wet space: No
Addition: No
Conversion: No

48 Canvasback Circle, Bridgeville, Sussex County, Delaware, United States, 19933

15 Floor 1 - Primary Bedroom



Dimensions: 13'9" x 15'5"
Area: 211 sq. ft
Counted as living area: Yes

Heated: Yes
Finished: Yes
Enclosed: Yes
Contiguous: Yes
Permitted: Yes
Wet space: No
Addition: No
Conversion: No

16 Floor 1 - Family Room



Dimensions: 19'9" x 14'2"
Area: 251 sq. ft
Counted as living area: Yes

Heated: Yes
Finished: Yes
Enclosed: Yes
Contiguous: Yes
Permitted: Yes
Wet space: No
Addition: No
Conversion: No

17 Floor 1 - W.I.C.

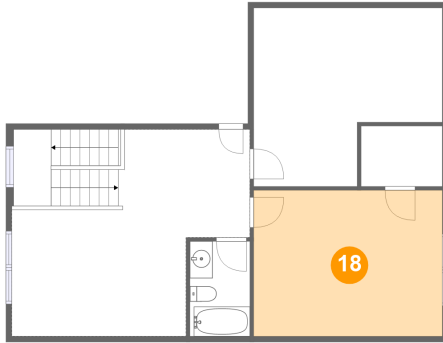


Dimensions: 4'7" x 12'0"
Area: 55 sq. ft
Counted as living area: Yes

Heated: Yes
Finished: Yes
Enclosed: Yes
Contiguous: Yes
Permitted: Yes
Wet space: No
Addition: No
Conversion: No

**48 Canvasback Circle, Bridgeville, Sussex County,
Delaware, United States, 19933**

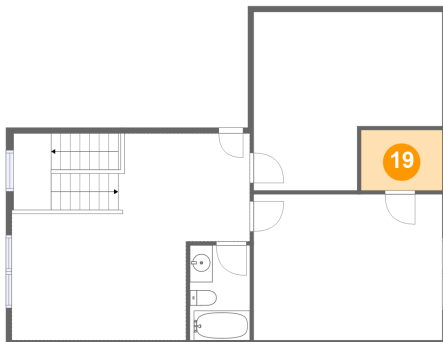
18 Floor 2 - Bedroom



Dimensions: 16'6" x 12'9"
Area: 210 sq. ft
Counted as living area: Yes

Heated: Yes
Finished: Yes
Enclosed: Yes
Contiguous: Yes
Permitted: Yes
Wet space: No
Addition: No
Conversion: No

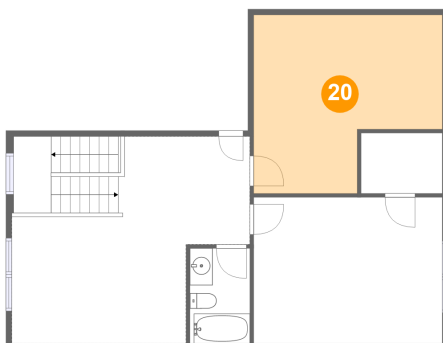
19 Floor 2 - W.I.C.



Dimensions: 7'1" x 5'3"
Area: 37 sq. ft
Counted as living area: Yes

Heated: Yes
Finished: Yes
Enclosed: Yes
Contiguous: Yes
Permitted: Yes
Wet space: No
Addition: No
Conversion: No

20 Floor 2 - Room

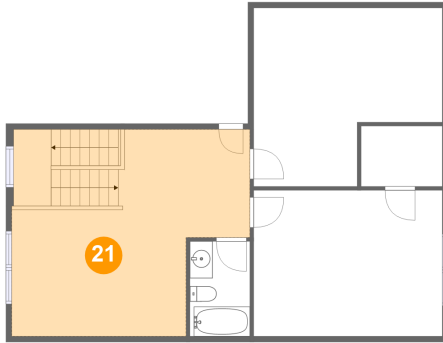


Dimensions: 16'6" x 15'7"
Area: 216 sq. ft
Counted as living area: Yes

Heated: Yes
Finished: Yes
Enclosed: Yes
Contiguous: Yes
Permitted: Yes
Wet space: No
Addition: No
Conversion: No

48 Canvasback Circle, Bridgeville, Sussex County, Delaware, United States, 19933

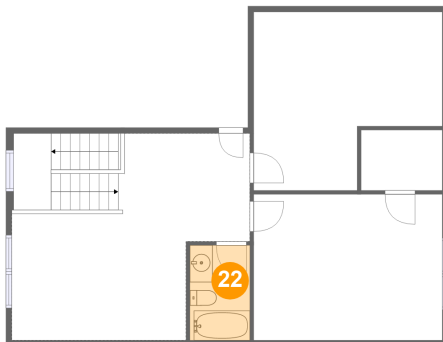
21 Floor 2 - Loft



Dimensions: 20'9" x 18'1"
Area: 327 sq. ft
Counted as living area: Yes

Heated: Yes
Finished: Yes
Enclosed: Yes
Contiguous: Yes
Permitted: Yes
Wet space: No
Addition: No
Conversion: No

22 Floor 2 - Bath



Dimensions: 5'3" x 8'4"
Area: 43 sq. ft
Counted as living area: Yes

Heated: Yes
Finished: Yes
Enclosed: Yes
Contiguous: Yes
Permitted: Yes
Wet space: Yes
Addition: No
Conversion: No