


# 733 Tyler Road, Vermont Heights, Salem, Roanoke County, Virginia, United States, 24153



## Property summary


 **2** Garages

 **3** Bedrooms

 **3** Bathrooms

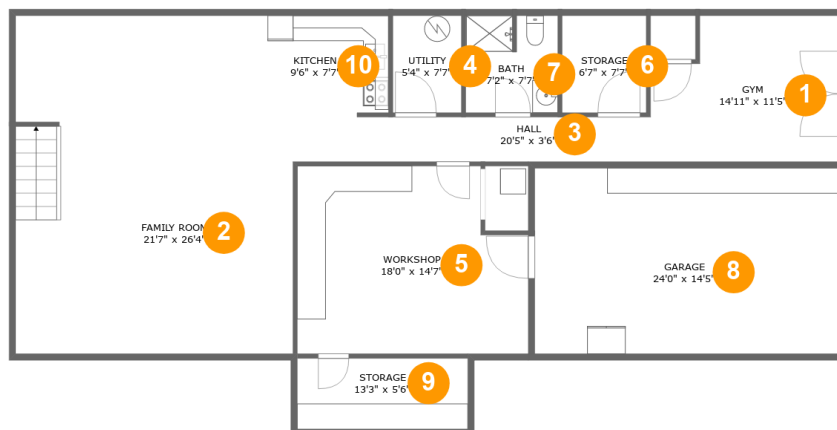
 **1** Half baths

 **2** Floors

 **3,221** Gross living area sqft

 **5,275** Total sqft

# 733 Tyler Road, Vermont Heights, Salem, Roanoke County, Virginia, United States, 24153



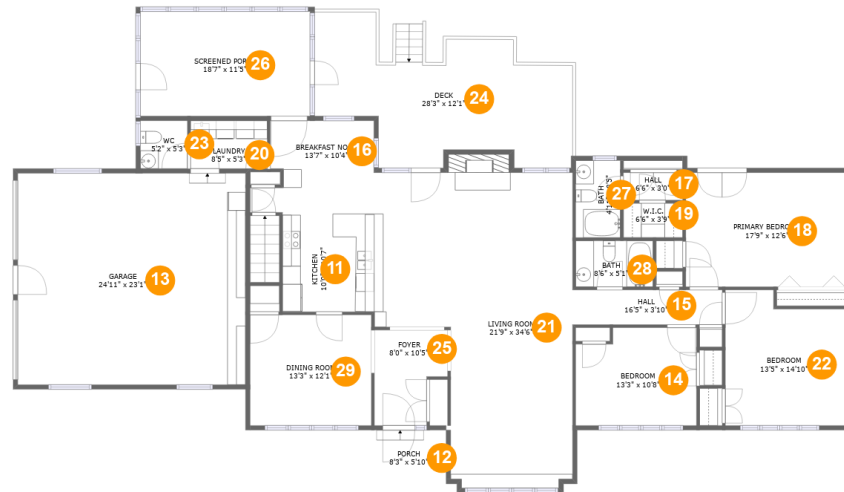
## Room dimensions

Floor 1

Total sqft: 1873 Living area: 1089

#		Dimensions	sqft	Counted as living area
1	Exercise Room	14'11" x 11'5"	156 sq. ft	Yes
2	Living Room	21'7" x 26'4"	580 sq. ft	Yes
3	Hall	20'5" x 3'6"	71 sq. ft	Yes
4	Utility	5'4" x 7'7"	40 sq. ft	Yes
5	Recreation Room	18'0" x 14'7"	243 sq. ft	No
6	Storage	6'7" x 7'7"	50 sq. ft	No
7	Bath	7'2" x 7'7"	53 sq. ft	Yes
8	Garage	24'0" x 14'5"	346 sq. ft	No
9	Storage	13'3" x 5'6"	73 sq. ft	No
10	Kitchen	9'6" x 7'7"	72 sq. ft	Yes

# 733 Tyler Road, Vermont Heights, Salem, Roanoke County, Virginia, United States, 24153



## Room dimensions

Floor 2

Total sqft: 3402 Living area: 2132

#		Dimensions	sqft	Counted as living area
11	Kitchen	10'0" x 10'7"	106 sq. ft	Yes
12	Outdoor	8'3" x 5'10"	48 sq. ft	No
13	Garage	24'11" x 23'1"	576 sq. ft	No
14	Bedroom	13'3" x 10'8"	134 sq. ft	Yes
15	Hall	16'5" x 3'10"	62 sq. ft	Yes
16	Nook	13'7" x 10'4"	120 sq. ft	Yes
17	Hall	6'6" x 3'0"	20 sq. ft	Yes
18	Bedroom	17'9" x 12'6"	222 sq. ft	Yes
19	Cl	6'6" x 3'9"	24 sq. ft	Yes
20	Utility	8'5" x 5'3"	44 sq. ft	Yes
21	Living Room	21'9" x 34'6"	613 sq. ft	Yes

Scan captured on Mon, 25 Nov 2024 20:44:59 GMT

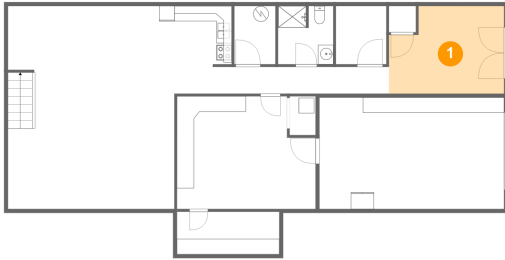
Information is calculated by Cubicasa technology deemed highly reliable but not guaranteed.

**733 Tyler Road, Vermont Heights, Salem, Roanoke  
County, Virginia, United States, 24153**

#		Dimensions	sqft	Counted as living area
22	Bedroom	13'5" x 14'10"	182 sq. ft	Yes
23	Bath	5'2" x 5'3"	27 sq. ft	Yes
24	Outdoor	28'3" x 12'1"	322 sq. ft	No
25	Entry	8'0" x 10'5"	71 sq. ft	Yes
26	Outdoor	18'7" x 11'5"	212 sq. ft	No
27	Bath	4'11" x 8'5"	41 sq. ft	Yes
28	Bath	8'6" x 5'1"	43 sq. ft	No
29	Dining Room	13'3" x 12'1"	161 sq. ft	Yes

# 733 Tyler Road, Vermont Heights, Salem, Roanoke County, Virginia, United States, 24153

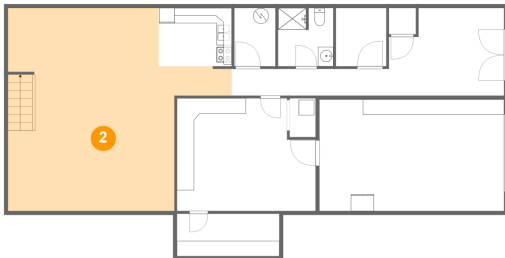
## 1 Floor 1 - Exercise Room



Dimensions: 14'11" x 11'5"  
Area: 156 sq. ft  
Counted as living area: Yes

Heated: Yes  
Finished: Yes  
Enclosed: Yes  
Contiguous: Yes  
Permitted: Yes  
Wet space: No  
Addition: No  
Conversion: No

## 2 Floor 1 - Living Room

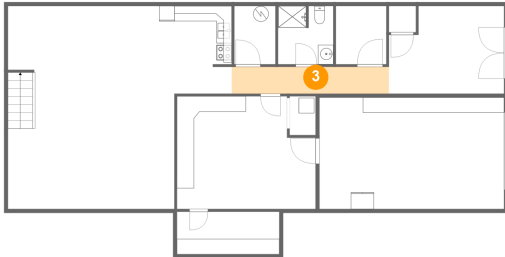


Dimensions: 21'7" x 26'4"  
Area: 580 sq. ft  
Counted as living area: Yes

Heated: Yes  
Finished: Yes  
Enclosed: Yes  
Contiguous: Yes  
Permitted: Yes  
Wet space: No  
Addition: No  
Conversion: No

# 733 Tyler Road, Vermont Heights, Salem, Roanoke County, Virginia, United States, 24153

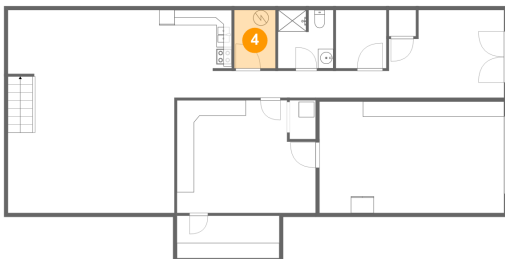
## 3 Floor 1 - Hall



Dimensions: 20'5" x 3'6"  
Area: 71 sq. ft  
Counted as living area: Yes

Heated: Yes  
Finished: Yes  
Enclosed: Yes  
Contiguous: Yes  
Permitted: Yes  
Wet space: No  
Addition: No  
Conversion: No

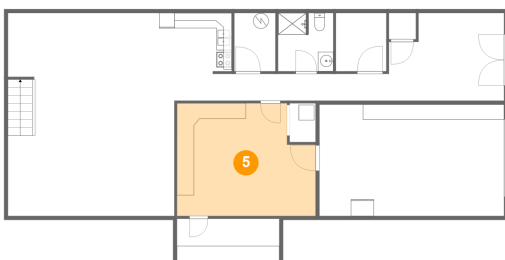
## 4 Floor 1 - Utility



Dimensions: 5'4" x 7'7"  
Area: 40 sq. ft  
Counted as living area: Yes

Heated: Yes  
Finished: Yes  
Enclosed: Yes  
Contiguous: Yes  
Permitted: Yes  
Wet space: No  
Addition: No  
Conversion: No

## 5 Floor 1 - Recreation Room

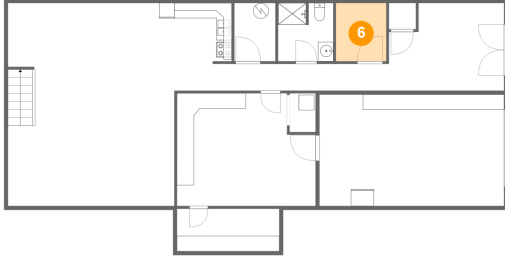


Dimensions: 18'0" x 14'7"  
Area: 243 sq. ft  
Counted as living area: No

Heated: No  
Finished: No  
Enclosed: Yes  
Contiguous: No  
Permitted: Yes  
Wet space: No  
Addition: No  
Conversion: No

# 733 Tyler Road, Vermont Heights, Salem, Roanoke County, Virginia, United States, 24153

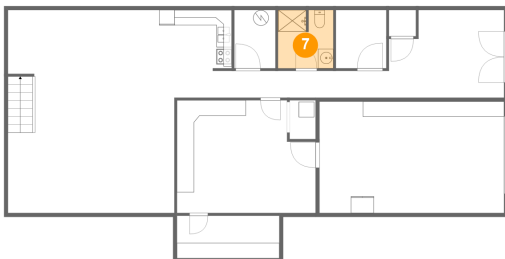
## 6 Floor 1 - Storage



Dimensions: 6'7" x 7'7"  
Area: 50 sq. ft  
Counted as living area: No

Heated: No  
Finished: No  
Enclosed: No  
Contiguous: No  
Permitted: Yes  
Wet space: No  
Addition: No  
Conversion: No

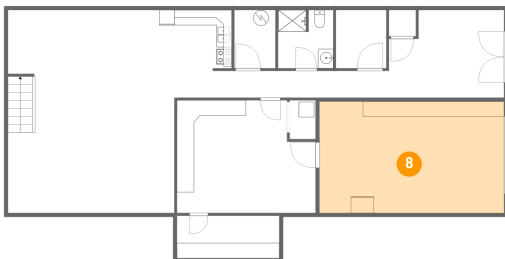
## 7 Floor 1 - Bath



Dimensions: 7'2" x 7'7"  
Area: 53 sq. ft  
Counted as living area: Yes

Heated: Yes  
Finished: Yes  
Enclosed: Yes  
Contiguous: Yes  
Permitted: Yes  
Wet space: Yes  
Addition: No  
Conversion: No

## 8 Floor 1 - Garage

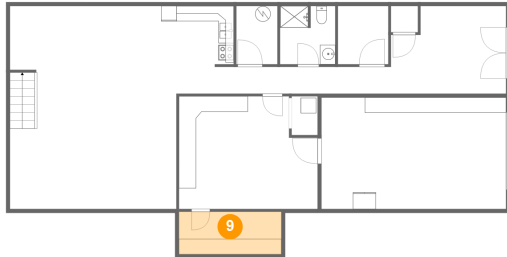


Dimensions: 24'0" x 14'5"  
Area: 346 sq. ft  
Counted as living area: No

Heated: No  
Finished: No  
Enclosed: Yes  
Contiguous: Yes  
Permitted: Yes  
Wet space: No  
Addition: No  
Conversion: No

# 733 Tyler Road, Vermont Heights, Salem, Roanoke County, Virginia, United States, 24153

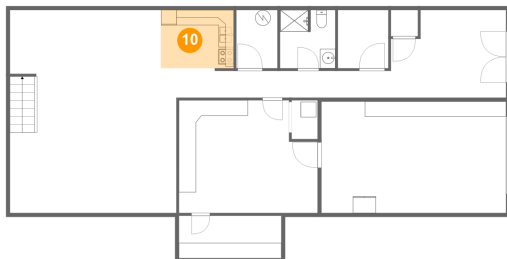
## 9 Floor 1 - Storage



Dimensions: 13'3" x 5'6"  
Area: 73 sq. ft  
Counted as living area: No

Heated: No  
Finished: No  
Enclosed: No  
Contiguous: Yes  
Permitted: Yes  
Wet space: No  
Addition: No  
Conversion: No

## 10 Floor 1 - Kitchen



Dimensions: 9'6" x 7'7"  
Area: 72 sq. ft  
Counted as living area: Yes

Heated: Yes  
Finished: Yes  
Enclosed: Yes  
Contiguous: Yes  
Permitted: Yes  
Wet space: No  
Addition: No  
Conversion: No

## 11 Floor 2 - Kitchen



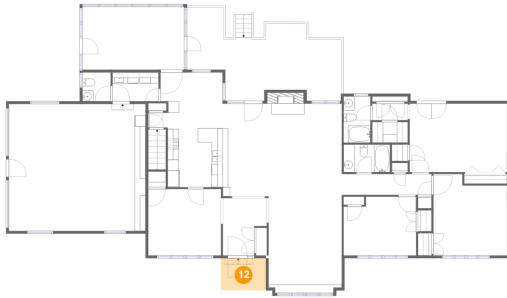
Dimensions: 10'0" x 10'7"  
Area: 106 sq. ft  
Counted as living area: Yes

Heated: Yes  
Finished: Yes  
Enclosed: Yes  
Contiguous: Yes  
Permitted: Yes  
Wet space: No  
Addition: No  
Conversion: No



# 733 Tyler Road, Vermont Heights, Salem, Roanoke County, Virginia, United States, 24153

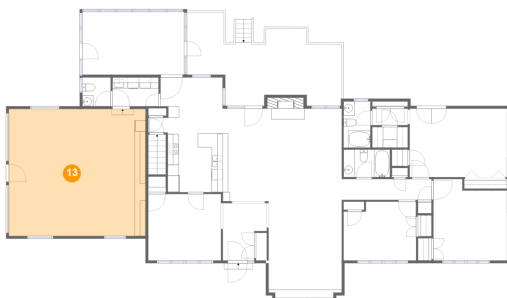
## 12 Floor 2 - Outdoor



Dimensions: 8'3" x 5'10"  
Area: 48 sq. ft  
Counted as living area: No

Heated: No  
Finished: Yes  
Enclosed: No  
Contiguous: Yes  
Permitted: Yes  
Wet space: No  
Addition: No  
Conversion: No

## 13 Floor 2 - Garage



Dimensions: 24'11" x 23'1"  
Area: 576 sq. ft  
Counted as living area: No

Heated: No  
Finished: No  
Enclosed: Yes  
Contiguous: Yes  
Permitted: Yes  
Wet space: No  
Addition: No  
Conversion: No

## 14 Floor 2 - Bedroom



Dimensions: 13'3" x 10'8"  
Area: 134 sq. ft  
Counted as living area: Yes

Heated: Yes  
Finished: Yes  
Enclosed: Yes  
Contiguous: Yes  
Permitted: Yes  
Wet space: No  
Addition: No  
Conversion: No

# 733 Tyler Road, Vermont Heights, Salem, Roanoke County, Virginia, United States, 24153

## 15 Floor 2 - Hall



Dimensions: 16'5" x 3'10"  
Area: 62 sq. ft  
Counted as living area: Yes

Heated: Yes  
Finished: Yes  
Enclosed: Yes  
Contiguous: Yes  
Permitted: Yes  
Wet space: No  
Addition: No  
Conversion: No

## 16 Floor 2 - Nook



Dimensions: 13'7" x 10'4"  
Area: 120 sq. ft  
Counted as living area: Yes

Heated: Yes  
Finished: Yes  
Enclosed: Yes  
Contiguous: Yes  
Permitted: Yes  
Wet space: No  
Addition: No  
Conversion: No

## 17 Floor 2 - Hall



Dimensions: 6'6" x 3'0"  
Area: 20 sq. ft  
Counted as living area: Yes

Heated: Yes  
Finished: Yes  
Enclosed: Yes  
Contiguous: Yes  
Permitted: Yes  
Wet space: No  
Addition: No  
Conversion: No

# 733 Tyler Road, Vermont Heights, Salem, Roanoke County, Virginia, United States, 24153

## 18 Floor 2 - Bedroom



Dimensions: 17'9" x 12'6"  
Area: 222 sq. ft  
Counted as living area: Yes

Heated: Yes  
Finished: Yes  
Enclosed: Yes  
Contiguous: Yes  
Permitted: Yes  
Wet space: No  
Addition: No  
Conversion: No

## 19 Floor 2 - Cl



Dimensions: 6'6" x 3'9"  
Area: 24 sq. ft  
Counted as living area: Yes

Heated: Yes  
Finished: Yes  
Enclosed: Yes  
Contiguous: Yes  
Permitted: Yes  
Wet space: No  
Addition: No  
Conversion: No

## 20 Floor 2 - Utility



Dimensions: 8'5" x 5'3"  
Area: 44 sq. ft  
Counted as living area: Yes

Heated: Yes  
Finished: Yes  
Enclosed: Yes  
Contiguous: Yes  
Permitted: Yes  
Wet space: No  
Addition: No  
Conversion: No

# 733 Tyler Road, Vermont Heights, Salem, Roanoke County, Virginia, United States, 24153

## 21 Floor 2 - Living Room



Dimensions: 21'9" x 34'6"  
Area: 613 sq. ft  
Counted as living area: Yes

Heated: Yes  
Finished: Yes  
Enclosed: Yes  
Contiguous: Yes  
Permitted: Yes  
Wet space: No  
Addition: No  
Conversion: No

## 22 Floor 2 - Bedroom



Dimensions: 13'5" x 14'10"  
Area: 182 sq. ft  
Counted as living area: Yes

Heated: Yes  
Finished: Yes  
Enclosed: Yes  
Contiguous: Yes  
Permitted: Yes  
Wet space: No  
Addition: No  
Conversion: No

## 23 Floor 2 - Bath



Dimensions: 5'2" x 5'3"  
Area: 27 sq. ft  
Counted as living area: Yes

Heated: Yes  
Finished: Yes  
Enclosed: Yes  
Contiguous: Yes  
Permitted: Yes  
Wet space: Yes  
Addition: No  
Conversion: No

# 733 Tyler Road, Vermont Heights, Salem, Roanoke County, Virginia, United States, 24153

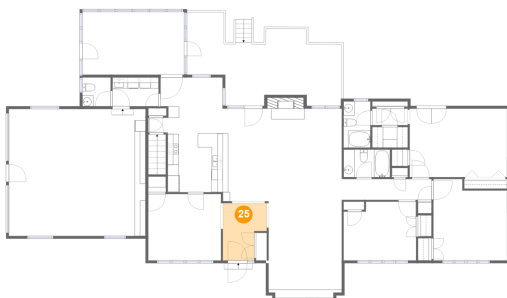
## 24 Floor 2 - Outdoor



Dimensions: 28'3" x 12'1"  
Area: 322 sq. ft  
Counted as living area: No

Heated: No  
Finished: Yes  
Enclosed: No  
Contiguous: Yes  
Permitted: Yes  
Wet space: No  
Addition: No  
Conversion: No

## 25 Floor 2 - Entry



Dimensions: 8'0" x 10'5"  
Area: 71 sq. ft  
Counted as living area: Yes

Heated: Yes  
Finished: Yes  
Enclosed: Yes  
Contiguous: Yes  
Permitted: Yes  
Wet space: No  
Addition: No  
Conversion: No

## 26 Floor 2 - Outdoor



Dimensions: 18'7" x 11'5"  
Area: 212 sq. ft  
Counted as living area: No

Heated: No  
Finished: Yes  
Enclosed: No  
Contiguous: Yes  
Permitted: Yes  
Wet space: No  
Addition: No  
Conversion: No

# 733 Tyler Road, Vermont Heights, Salem, Roanoke County, Virginia, United States, 24153

## 27 Floor 2 - Bath



Dimensions: 4'11" x 8'5"  
Area: 41 sq. ft  
Counted as living area: Yes

Heated: Yes  
Finished: Yes  
Enclosed: Yes  
Contiguous: Yes  
Permitted: Yes  
Wet space: Yes  
Addition: No  
Conversion: No

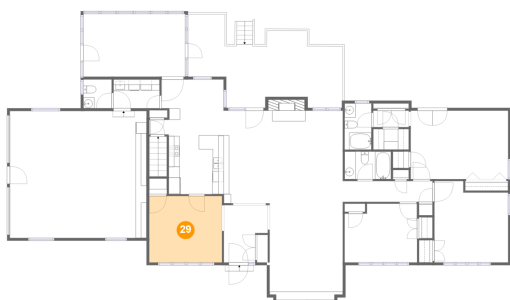
## 28 Floor 2 - Bath



Dimensions: 8'6" x 5'1"  
Area: 43 sq. ft  
Counted as living area: No

Heated: Yes  
Finished: Yes  
Enclosed: Yes  
Contiguous: Yes  
Permitted: Yes  
Wet space: Yes  
Addition: No  
Conversion: No

## 29 Floor 2 - Dining Room



Dimensions: 13'3" x 12'1"  
Area: 161 sq. ft  
Counted as living area: Yes

Heated: Yes  
Finished: Yes  
Enclosed: Yes  
Contiguous: Yes  
Permitted: Yes  
Wet space: No  
Addition: No  
Conversion: No