

Home report

7868 Renderbrook Bend, Valley Ranch, Irving, Dallas County, Texas, United States, 75063



Total Area: 3670 sq. ft

Floor 1: 1969 sq. ft, Floor 2: 1701 sq. ft

Excluded: Outdoor Porch 54 sq. ft, Outdoor Patio Covered 228 sq. ft, Garage 408 sq. ft, Opentobelow 305 sq. ft, Walls: 233 sq. ft

Property summary

 **2** Floors

 **5** Bedrooms

 **5** Bathrooms

Home report

**7868 Renderbrook Bend, Valley Ranch, Irving, Dallas County,
Texas, United States, 75063**



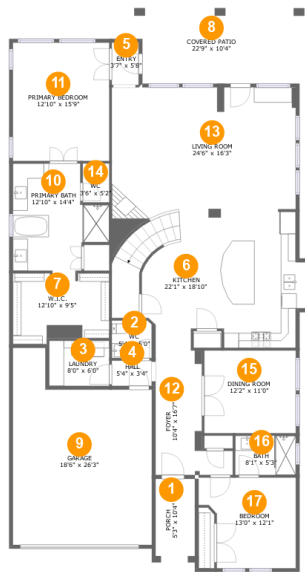
1
Half baths



1
Garages

Home report

7868 Renderbrook Bend, Valley Ranch, Irving, Dallas County, Texas, United States, 75063



Room dimensions

Floor 1 Total:1969sqft Excluded: 690sqft

#		Max Dimensions	sqft	Included
1	Porch	5'3" x 10'4"	54 sq. ft	No
2	WC	5'4" x 5'0"	27 sq. ft	Yes
3	Laundry	8'0" x 6'0"	48 sq. ft	Yes
4	Hall	5'4" x 3'4"	18 sq. ft	Yes
5	Entry	3'7" x 5'8"	20 sq. ft	Yes
6	Kitchen	22'1" x 18'10"	404 sq. ft	Yes
7	W.I.C.	12'10" x 9'5"	115 sq. ft	Yes
8	Covered Patio	22'9" x 10'4"	228 sq. ft	No
9	Garage	18'6" x 26'3"	408 sq. ft	No
10	Primary Bath	12'10" x 14'4"	149 sq. ft	Yes
11	Primary Bedroom	12'10" x 15'9"	203 sq. ft	Yes

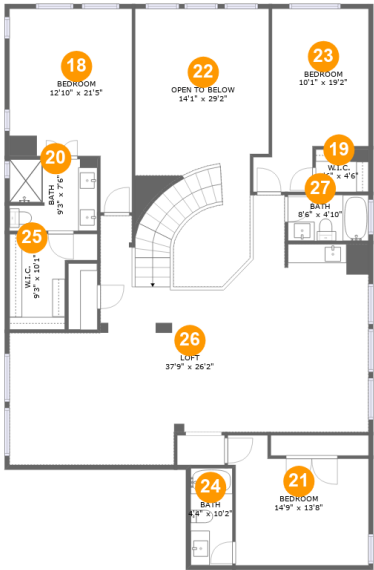
Home report

**7868 Renderbrook Bend, Valley Ranch, Irving, Dallas County,
Texas, United States, 75063**

#		Max Dimensions	sqft	Included
12	Foyer	10'4" x 16'7"	116 sq. ft	Yes
13	Living Room	24'6" x 16'3"	415 sq. ft	Yes
14	WC	3'6" x 5'2"	18 sq. ft	Yes
15	Dining Room	12'2" x 11'0"	134 sq. ft	Yes
16	Bath	8'1" x 5'3"	42 sq. ft	Yes
17	Bedroom	13'0" x 12'1"	137 sq. ft	Yes

Home report

7868 Renderbrook Bend, Valley Ranch, Irving, Dallas County, Texas, United States, 75063



Room dimensions

Floor 2 Total:1701sqft Excluded: 305sqft

#		Max Dimensions	sqft	Included
18	Bedroom	12'10" x 21'5"	219 sq. ft	Yes
19	W.I.C.	5'6" x 4'6"	25 sq. ft	Yes
20	Bath	9'3" x 7'6"	68 sq. ft	Yes
21	Bedroom	14'9" x 13'8"	167 sq. ft	Yes
22	Open To Below	14'1" x 29'2"	306 sq. ft	No
23	Bedroom	10'1" x 19'2"	174 sq. ft	Yes
24	Bath	4'4" x 10'2"	45 sq. ft	Yes
25	W.I.C.	9'3" x 10'1"	68 sq. ft	Yes
26	Loft	37'9" x 26'2"	762 sq. ft	Yes
27	Bath	8'6" x 4'10"	41 sq. ft	Yes

7868 Renderbrook Bend, Valley Ranch, Irving, Dallas County,
Texas, United States, 75063

1 Floor 1 - Porch



Max Dimensions: 5'3" x 10'4"
Calculated Area: 54 sq. ft
Included: No

Heated: No
Finished: Yes
Enclosed: No
Contiguous: Yes
Permitted: Yes
Wet space: No
Addition: No
Conversion: No

2 Floor 1 - WC



Max Dimensions: 5'4" x 5'0"
Calculated Area: 27 sq. ft
Included: Yes

Heated: Yes
Finished: Yes
Enclosed: Yes
Contiguous: Yes
Permitted: Yes
Wet space: Yes
Addition: No
Conversion: No

7868 Renderbrook Bend, Valley Ranch, Irving, Dallas County,
Texas, United States, 75063

3 Floor 1 - Laundry



Max Dimensions: 8'0" x 6'0"
Calculated Area: 48 sq. ft
Included: Yes

Heated: Yes
Finished: Yes
Enclosed: Yes
Contiguous: Yes
Permitted: Yes
Wet space: No
Addition: No
Conversion: No

4 Floor 1 - Hall



Max Dimensions: 5'4" x 3'4"
Calculated Area: 18 sq. ft
Included: Yes

Heated: Yes
Finished: Yes
Enclosed: Yes
Contiguous: Yes
Permitted: Yes
Wet space: No
Addition: No
Conversion: No

5 Floor 1 - Entry



Max Dimensions: 3'7" x 5'8"
Calculated Area: 20 sq. ft
Included: Yes

Heated: Yes
Finished: Yes
Enclosed: Yes
Contiguous: Yes
Permitted: Yes
Wet space: No
Addition: No
Conversion: No

7868 Renderbrook Bend, Valley Ranch, Irving, Dallas County,
Texas, United States, 75063

6 Floor 1 - Kitchen



Max Dimensions: 22'1" x 18'10"
Calculated Area: 404 sq. ft
Included: Yes

Heated: Yes
Finished: Yes
Enclosed: Yes
Contiguous: Yes
Permitted: Yes
Wet space: No
Addition: No
Conversion: No

7 Floor 1 - W.I.C.



Max Dimensions: 12'10" x 9'5"
Calculated Area: 115 sq. ft
Included: Yes

Heated: Yes
Finished: Yes
Enclosed: Yes
Contiguous: Yes
Permitted: Yes
Wet space: No
Addition: No
Conversion: No

8 Floor 1 - Covered Patio



Max Dimensions: 22'9" x 10'4"
Calculated Area: 228 sq. ft
Included: No

Heated: No
Finished: Yes
Enclosed: No
Contiguous: Yes
Permitted: Yes
Wet space: No
Addition: No
Conversion: No

7868 Renderbrook Bend, Valley Ranch, Irving, Dallas County,
Texas, United States, 75063

9 Floor 1 - Garage



Max Dimensions: 18'6" x 26'3"
Calculated Area: 408 sq. ft
Included: No

Heated: No
Finished: No
Enclosed: Yes
Contiguous: Yes
Permitted: Yes
Wet space: No
Addition: No
Conversion: No

10 Floor 1 - Primary Bath



Max Dimensions: 12'10" x 14'4"
Calculated Area: 149 sq. ft
Included: Yes

Heated: Yes
Finished: Yes
Enclosed: Yes
Contiguous: Yes
Permitted: Yes
Wet space: Yes
Addition: No
Conversion: No

11 Floor 1 - Primary Bedroom



Max Dimensions: 12'10" x 15'9"
Calculated Area: 203 sq. ft
Included: Yes

Heated: Yes
Finished: Yes
Enclosed: Yes
Contiguous: Yes
Permitted: Yes
Wet space: No
Addition: No
Conversion: No

7868 Renderbrook Bend, Valley Ranch, Irving, Dallas County,
Texas, United States, 75063

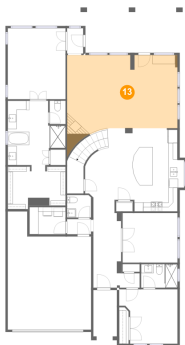
12 Floor 1 - Foyer



Max Dimensions: 10'4" x 16'7"
Calculated Area: 116 sq. ft
Included: Yes

Heated: Yes
Finished: Yes
Enclosed: Yes
Contiguous: Yes
Permitted: Yes
Wet space: No
Addition: No
Conversion: No

13 Floor 1 - Living Room



Max Dimensions: 24'6" x 16'3"
Calculated Area: 415 sq. ft
Included: Yes

Heated: Yes
Finished: Yes
Enclosed: Yes
Contiguous: Yes
Permitted: Yes
Wet space: No
Addition: No
Conversion: No

14 Floor 1 - WC



Max Dimensions: 3'6" x 5'2"
Calculated Area: 18 sq. ft
Included: Yes

Heated: Yes
Finished: Yes
Enclosed: Yes
Contiguous: Yes
Permitted: Yes
Wet space: Yes
Addition: No
Conversion: No

7868 Renderbrook Bend, Valley Ranch, Irving, Dallas County, Texas, United States, 75063

15 Floor 1 - Dining Room



Max Dimensions: 12'2" x 11'0"
Calculated Area: 134 sq. ft
Included: Yes

Heated: Yes
Finished: Yes
Enclosed: Yes
Contiguous: Yes
Permitted: Yes
Wet space: No
Addition: No
Conversion: No

16 Floor 1 - Bath



Max Dimensions: 8'1" x 5'3"
Calculated Area: 42 sq. ft
Included: Yes

Heated: Yes
Finished: Yes
Enclosed: Yes
Contiguous: Yes
Permitted: Yes
Wet space: Yes
Addition: No
Conversion: No

17 Floor 1 - Bedroom



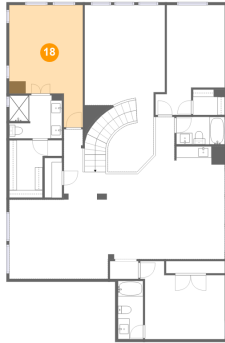
Max Dimensions: 13'0" x 12'1"
Calculated Area: 137 sq. ft
Included: Yes

Heated: Yes
Finished: Yes
Enclosed: Yes
Contiguous: Yes
Permitted: Yes
Wet space: No
Addition: No
Conversion: No

Home report

7868 Renderbrook Bend, Valley Ranch, Irving, Dallas County,
Texas, United States, 75063

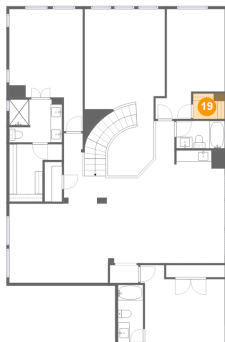
18 Floor 2 - Bedroom



Max Dimensions: 12'10" x 21'5"
Calculated Area: 219 sq. ft
Included: Yes

Heated: Yes
Finished: Yes
Enclosed: Yes
Contiguous: Yes
Permitted: Yes
Wet space: No
Addition: No
Conversion: No

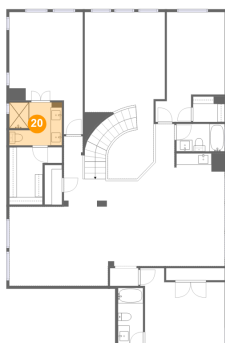
19 Floor 2 - W.I.C.



Max Dimensions: 5'6" x 4'6"
Calculated Area: 25 sq. ft
Included: Yes

Heated: Yes
Finished: Yes
Enclosed: Yes
Contiguous: Yes
Permitted: Yes
Wet space: No
Addition: No
Conversion: No

20 Floor 2 - Bath

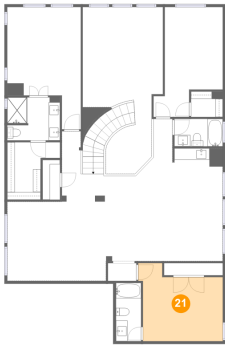


Max Dimensions: 9'3" x 7'6"
Calculated Area: 68 sq. ft
Included: Yes

Heated: Yes
Finished: Yes
Enclosed: Yes
Contiguous: Yes
Permitted: Yes
Wet space: Yes
Addition: No
Conversion: No

7868 Renderbrook Bend, Valley Ranch, Irving, Dallas County, Texas, United States, 75063

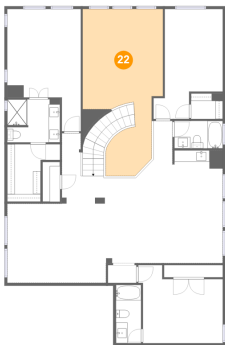
21 Floor 2 - Bedroom



Max Dimensions: 14'9" x 13'8"
Calculated Area: 167 sq. ft
Included: Yes

Heated: Yes
Finished: Yes
Enclosed: Yes
Contiguous: Yes
Permitted: Yes
Wet space: No
Addition: No
Conversion: No

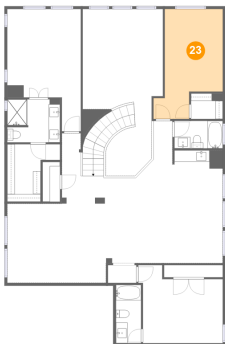
22 Floor 2 - Open To Below



Max Dimensions: 14'1" x 29'2"
Calculated Area: 306 sq. ft
Included: No

Heated: No
Finished: No
Enclosed: No
Contiguous: Yes
Permitted: No
Wet space: No
Addition: No
Conversion: No

23 Floor 2 - Bedroom

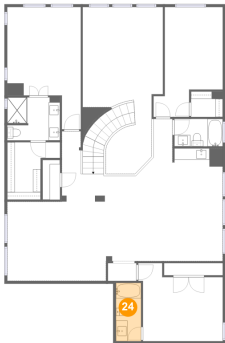


Max Dimensions: 10'1" x 19'2"
Calculated Area: 174 sq. ft
Included: Yes

Heated: Yes
Finished: Yes
Enclosed: Yes
Contiguous: Yes
Permitted: Yes
Wet space: No
Addition: No
Conversion: No

7868 Renderbrook Bend, Valley Ranch, Irving, Dallas County,
Texas, United States, 75063

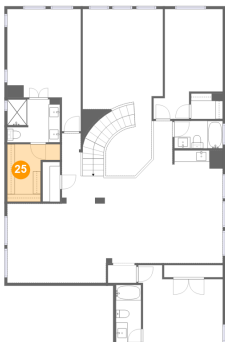
24 Floor 2 - Bath



Max Dimensions: 4'4" x 10'2"
Calculated Area: 45 sq. ft
Included: Yes

Heated: Yes
Finished: Yes
Enclosed: Yes
Contiguous: Yes
Permitted: Yes
Wet space: Yes
Addition: No
Conversion: No

25 Floor 2 - W.I.C.



Max Dimensions: 9'3" x 10'1"
Calculated Area: 68 sq. ft
Included: Yes

Heated: Yes
Finished: Yes
Enclosed: Yes
Contiguous: Yes
Permitted: Yes
Wet space: No
Addition: No
Conversion: No

26 Floor 2 - Loft

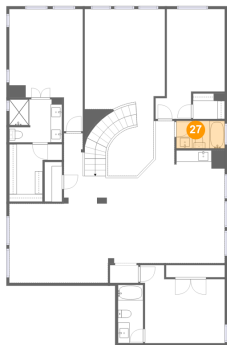


Max Dimensions: 37'9" x 26'2"
Calculated Area: 762 sq. ft
Included: Yes

Heated: Yes
Finished: Yes
Enclosed: Yes
Contiguous: Yes
Permitted: Yes
Wet space: No
Addition: No
Conversion: No

7868 Renderbrook Bend, Valley Ranch, Irving, Dallas County,
Texas, United States, 75063

27 Floor 2 - Bath



Max Dimensions: 8'6" x 4'10"
Calculated Area: 41 sq. ft
Included: Yes

Heated: Yes
Finished: Yes
Enclosed: Yes
Contiguous: Yes
Permitted: Yes
Wet space: Yes
Addition: No
Conversion: No