

Home data report

11208 Arlington Trace Dr,Arlington,TN,US



Total Area: 1757 sq. ft

1st Floor: 1525 sq. ft, 2nd Floor: 232 sq. ft

Excluded: Low ceiling 70 sq. ft, Walls: 151 sq. ft

Property summary

 **2** Floors

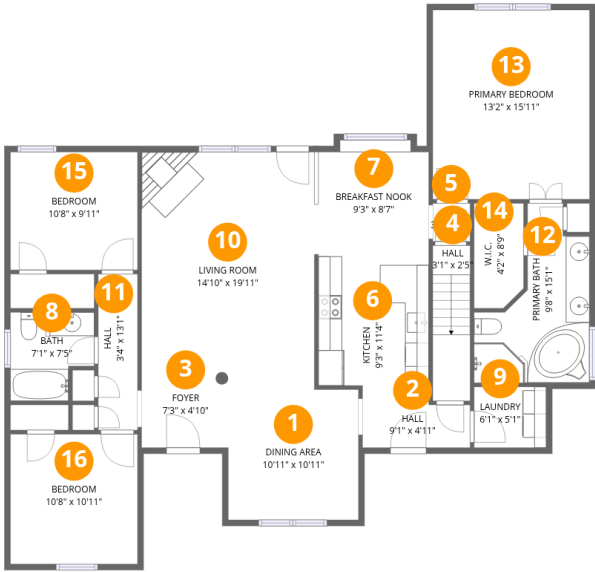
 **4** Bedrooms

 **2** Bathrooms

 **1** Half baths

Home data report

11208 Arlington Trace Dr,Arlington,TN,US



Room dimensions

Floor 1 Total:1525sqft Excluded: 0sqft

#		Dimensions	sqft	Counted as living area
1	Dining Area	10'11" x 10'11"	120 sq. ft	Yes
2	Hall	9'1" x 4'11"	40 sq. ft	Yes
3	Foyer	7'3" x 4'10"	36 sq. ft	Yes
4	Hall	3'1" x 2'5"	41 sq. ft	Yes
5	Hall	3'2" x 3'3"	10 sq. ft	Yes
6	Kitchen	9'3" x 11'4"	104 sq. ft	Yes
7	Breakfast Nook	9'3" x 8'7"	86 sq. ft	Yes
8	Bath	7'1" x 7'5"	46 sq. ft	Yes
9	Laundry	6'1" x 5'1"	31 sq. ft	Yes
10	Living Room	14'10" x 19'11"	293 sq. ft	Yes
11	Hall	3'4" x 13'1"	43 sq. ft	Yes

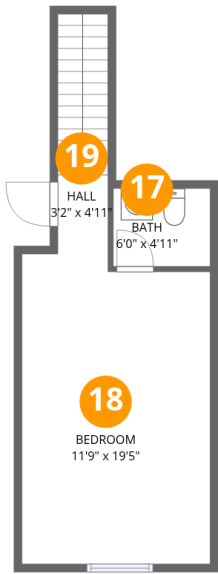
Home data report

11208 Arlington Trace Dr,Arlington,TN,US

#		Dimensions	sqft	Counted as living area
12	Primary Bath	9'8" x 15'1"	101 sq. ft	Yes
13	Primary Bedroom	13'2" x 15'11"	210 sq. ft	Yes
14	W.I.C.	4'2" x 8'9"	35 sq. ft	Yes
15	Bedroom	10'8" x 9'11"	106 sq. ft	Yes
16	Bedroom	10'8" x 10'11"	117 sq. ft	Yes

Home data report

11208 Arlington Trace Dr,Arlington,TN,US

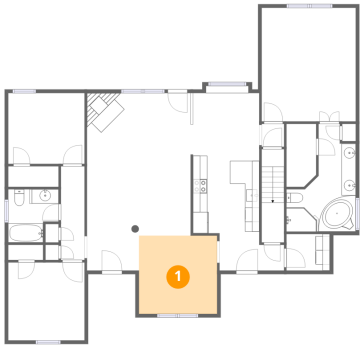


Room dimensions

Floor 2 Total:232sqft Excluded: 70sqft

#		Dimensions	sqft	Counted as living area
17	Bath	6'0" x 4'11"	22 sq. ft	Yes
18	Bedroom	11'9" x 19'5"	160 sq. ft	Yes
19	Hall	3'2" x 4'11"	47 sq. ft	Yes

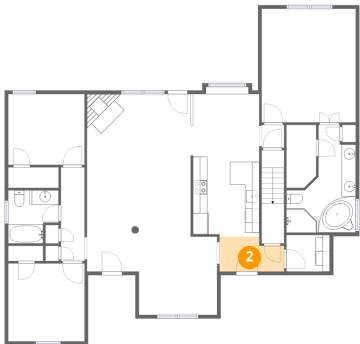
1 Floor 1 - Dining Area



Dimensions: 10'11" x 10'11"
Area: 120 sq. ft
Counted as living area: Yes

Heated: Yes
Finished: Yes
Enclosed: Yes
Contiguous: Yes
Permitted: Yes
Wet space: No
Addition: No
Conversion: No

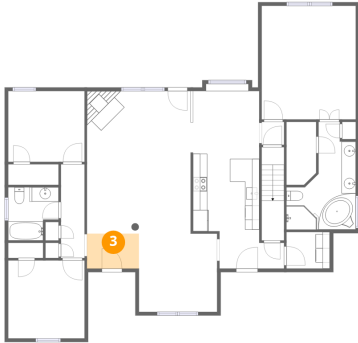
2 Floor 1 - Hall



Dimensions: 9'1" x 4'11"
Area: 40 sq. ft
Counted as living area: Yes

Heated: Yes
Finished: Yes
Enclosed: Yes
Contiguous: Yes
Permitted: Yes
Wet space: No
Addition: No
Conversion: No

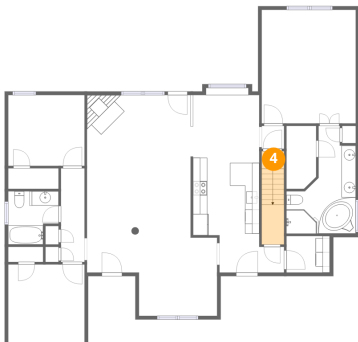
3 Floor 1 - Foyer



Dimensions: 7'3" x 4'10"
Area: 36 sq. ft
Counted as living area: Yes

Heated: Yes
Finished: Yes
Enclosed: Yes
Contiguous: Yes
Permitted: Yes
Wet space: No
Addition: No
Conversion: No

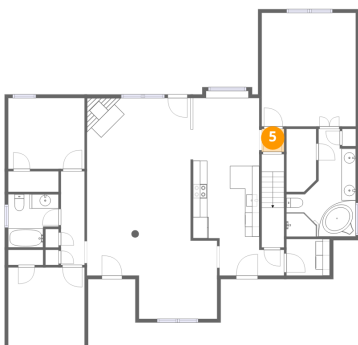
4 Floor 1 - Hall



Dimensions: 3'1" x 2'5"
Area: 41 sq. ft
Counted as living area: Yes

Heated: Yes
Finished: Yes
Enclosed: Yes
Contiguous: Yes
Permitted: Yes
Wet space: No
Addition: No
Conversion: No

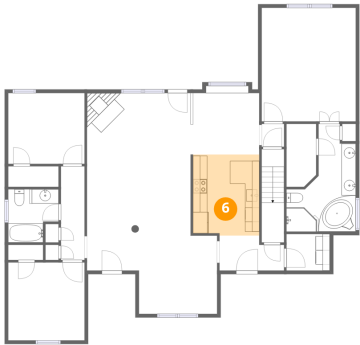
5 Floor 1 - Hall



Dimensions: 3'2" x 3'3"
Area: 10 sq. ft
Counted as living area: Yes

Heated: Yes
Finished: Yes
Enclosed: Yes
Contiguous: Yes
Permitted: Yes
Wet space: No
Addition: No
Conversion: No

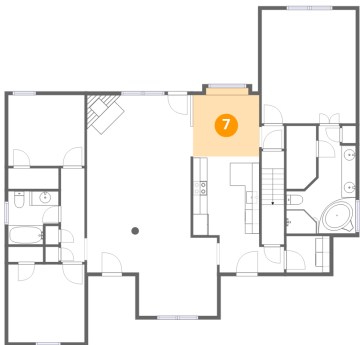
6 Floor 1 - Kitchen



Dimensions: 9'3" x 11'4"
Area: 104 sq. ft
Counted as living area: Yes

Heated: Yes
Finished: Yes
Enclosed: Yes
Contiguous: Yes
Permitted: Yes
Wet space: No
Addition: No
Conversion: No

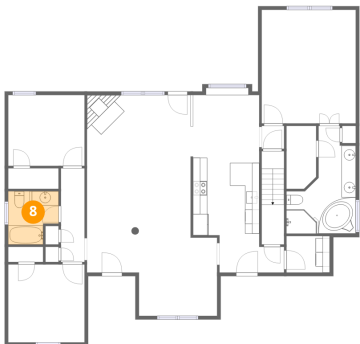
7 Floor 1 - Breakfast Nook



Dimensions: 9'3" x 8'7"
Area: 86 sq. ft
Counted as living area: Yes

Heated: Yes
Finished: Yes
Enclosed: Yes
Contiguous: Yes
Permitted: Yes
Wet space: No
Addition: No
Conversion: No

8 Floor 1 - Bath



Dimensions: 7'1" x 7'5"
Area: 46 sq. ft
Counted as living area: Yes

Heated: Yes
Finished: Yes
Enclosed: Yes
Contiguous: Yes
Permitted: Yes
Wet space: Yes
Addition: No
Conversion: No

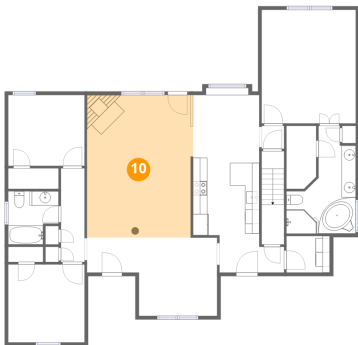
9 Floor 1 - Laundry



Dimensions: 6'1" x 5'1"
Area: 31 sq. ft
Counted as living area: Yes

Heated: Yes
Finished: Yes
Enclosed: Yes
Contiguous: Yes
Permitted: Yes
Wet space: No
Addition: No
Conversion: No

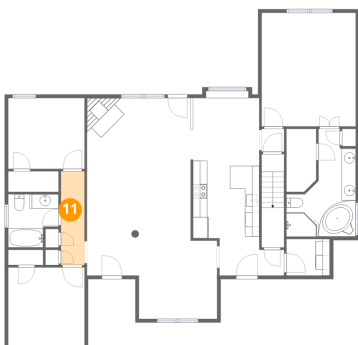
10 Floor 1 - Living Room



Dimensions: 14'10" x 19'11"
Area: 293 sq. ft
Counted as living area: Yes

Heated: Yes
Finished: Yes
Enclosed: Yes
Contiguous: Yes
Permitted: Yes
Wet space: No
Addition: No
Conversion: No

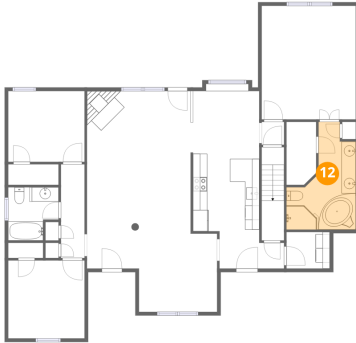
11 Floor 1 - Hall



Dimensions: 3'4" x 13'1"
Area: 43 sq. ft
Counted as living area: Yes

Heated: Yes
Finished: Yes
Enclosed: Yes
Contiguous: Yes
Permitted: Yes
Wet space: No
Addition: No
Conversion: No

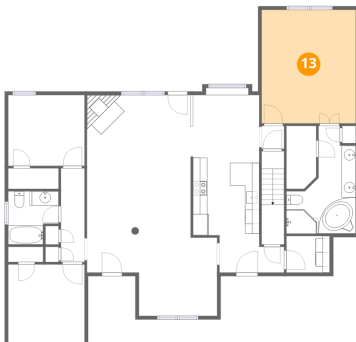
12 Floor 1 - Primary Bath



Dimensions: 9'8" x 15'1"
Area: 101 sq. ft
Counted as living area: Yes

Heated: Yes
Finished: Yes
Enclosed: Yes
Contiguous: Yes
Permitted: Yes
Wet space: Yes
Addition: No
Conversion: No

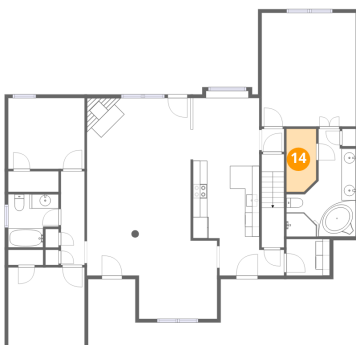
13 Floor 1 - Primary Bedroom



Dimensions: 13'2" x 15'11"
Area: 210 sq. ft
Counted as living area: Yes

Heated: Yes
Finished: Yes
Enclosed: Yes
Contiguous: Yes
Permitted: Yes
Wet space: No
Addition: No
Conversion: No

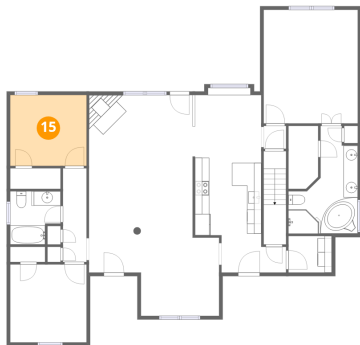
14 Floor 1 - W.I.C.



Dimensions: 4'2" x 8'9"
Area: 35 sq. ft
Counted as living area: Yes

Heated: Yes
Finished: Yes
Enclosed: Yes
Contiguous: Yes
Permitted: Yes
Wet space: No
Addition: No
Conversion: No

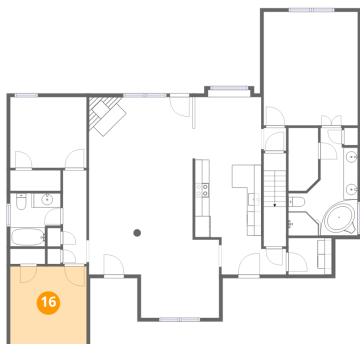
15 Floor 1 - Bedroom



Dimensions: 10'8" x 9'11"
Area: 106 sq. ft
Counted as living area: Yes

Heated: Yes
Finished: Yes
Enclosed: Yes
Contiguous: Yes
Permitted: Yes
Wet space: No
Addition: No
Conversion: No

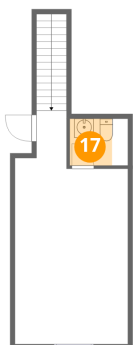
16 Floor 1 - Bedroom



Dimensions: 10'8" x 10'11"
Area: 117 sq. ft
Counted as living area: Yes

Heated: Yes
Finished: Yes
Enclosed: Yes
Contiguous: Yes
Permitted: Yes
Wet space: No
Addition: No
Conversion: No

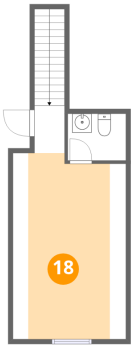
17 Floor 2 - Bath



Dimensions: 6'0" x 4'11"
Area: 22 sq. ft
Counted as living area: Yes

Heated: Yes
Finished: Yes
Enclosed: Yes
Contiguous: Yes
Permitted: Yes
Wet space: Yes
Addition: No
Conversion: No

18 Floor 2 - Bedroom



Dimensions: 11'9" x 19'5"
Area: 160 sq. ft
Counted as living area: Yes

Heated: Yes
Finished: Yes
Enclosed: Yes
Contiguous: Yes
Permitted: Yes
Wet space: No
Addition: No
Conversion: No

19 Floor 2 - Hall



Dimensions: 3'2" x 4'11"
Area: 47 sq. ft
Counted as living area: Yes

Heated: Yes
Finished: Yes
Enclosed: Yes
Contiguous: Yes
Permitted: Yes
Wet space: No
Addition: No
Conversion: No