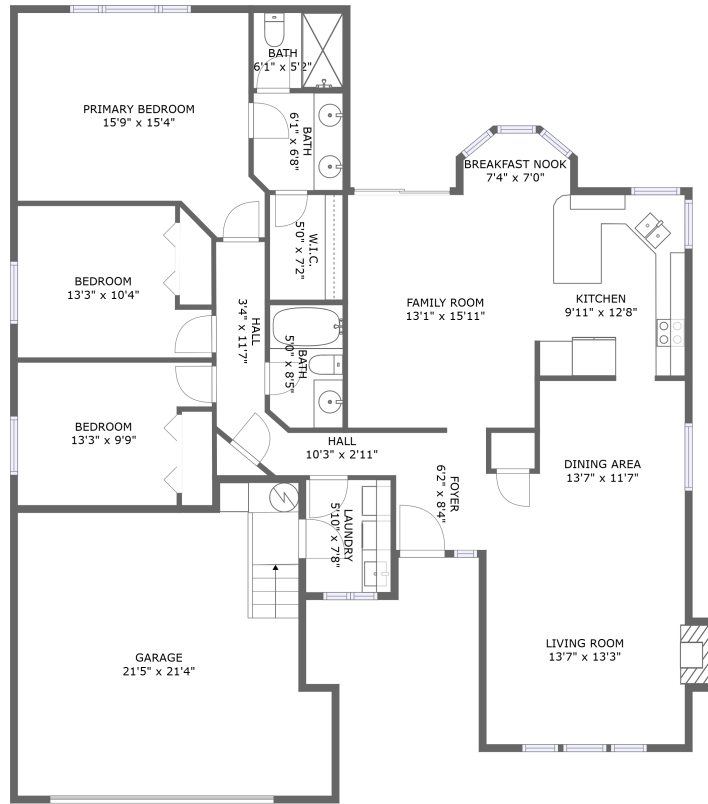



# 5595 Southwest 150th Court, West Beaverton, Beaverton, Washington County, Oregon, United



FLOOR 1

## Property summary


 **1** Garages

 **3** Bedrooms

 **2** Bathrooms

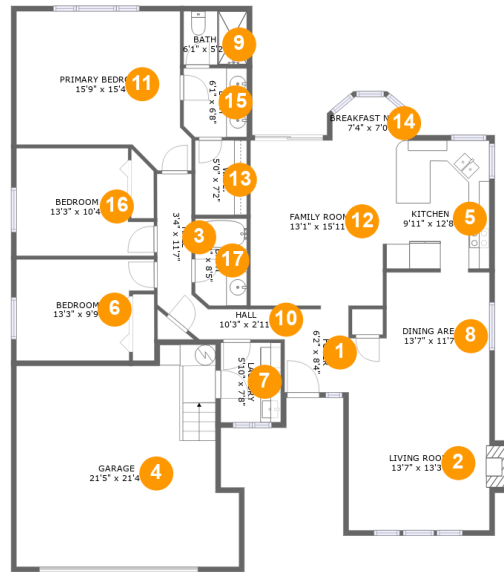
 **0** Half baths

 **1** Floors

 **1,632** Gross living area sqft

 **2,068** Total sqft

# 5595 Southwest 150th Court, West Beaverton, Beaverton, Washington County, Oregon, United



## Room dimensions

Floor 1

Total sqft: 2068 Living area: 1632

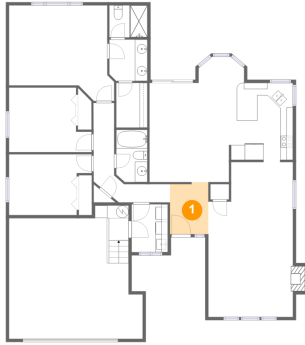
#		Dimensions	sqft	Counted as living area
1	Foyer	6'2" x 8'4"	50 sq. ft	Yes
2	Living Room	13'7" x 13'3"	187 sq. ft	Yes
3	Hall	3'4" x 11'7"	39 sq. ft	Yes
4	Garage	21'5" x 21'4"	397 sq. ft	No
5	Kitchen	9'11" x 12'8"	117 sq. ft	Yes
6	Bedroom	13'3" x 9'9"	113 sq. ft	Yes
7	Laundry	5'10" x 7'8"	45 sq. ft	Yes
8	Dining Area	13'7" x 11'7"	133 sq. ft	Yes
9	Bath	6'1" x 5'2"	31 sq. ft	Yes
10	Hall	10'3" x 2'11"	35 sq. ft	Yes
11	Primary Bedroom	15'9" x 15'4"	215 sq. ft	Yes

**5595 Southwest 150th Court, West Beaverton,  
Beaverton, Washington County, Oregon, United**

#		Dimensions	sqft	Counted as living area
12	Family Room	13'1" x 15'11"	191 sq. ft	Yes
13	W.I.C.	5'0" x 7'2"	36 sq. ft	Yes
14	Breakfast Nook	7'4" x 7'0"	47 sq. ft	Yes
15	Bath	6'1" x 6'8"	40 sq. ft	Yes
16	Bedroom	13'3" x 10'4"	119 sq. ft	Yes
17	Bath	5'0" x 8'5"	41 sq. ft	Yes

# 5595 Southwest 150th Court, West Beaverton, Beaverton, Washington County, Oregon, United

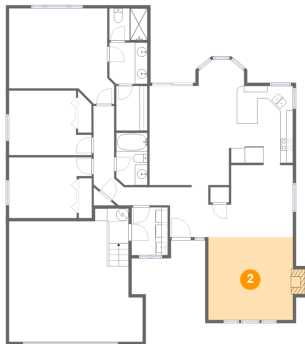
## 1 Floor 1 - Foyer



Dimensions: 6'2" x 8'4"  
Area: 50 sq. ft  
Counted as living area: Yes

Heated: Yes  
Finished: Yes  
Enclosed: Yes  
Contiguous: Yes  
Permitted: Yes  
Wet space: No  
Addition: No  
Conversion: No

## 2 Floor 1 - Living Room

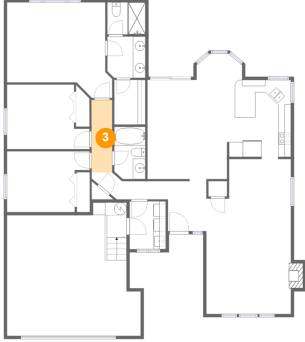


Dimensions: 13'7" x 13'3"  
Area: 187 sq. ft  
Counted as living area: Yes

Heated: Yes  
Finished: Yes  
Enclosed: Yes  
Contiguous: Yes  
Permitted: Yes  
Wet space: No  
Addition: No  
Conversion: No

# 5595 Southwest 150th Court, West Beaverton, Beaverton, Washington County, Oregon, United

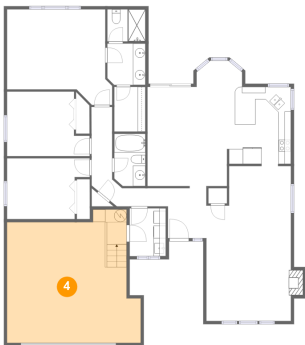
## 3 Floor 1 - Hall



Dimensions: 3'4" x 11'7"  
Area: 39 sq. ft  
Counted as living area: Yes

Heated: Yes  
Finished: Yes  
Enclosed: Yes  
Contiguous: Yes  
Permitted: Yes  
Wet space: No  
Addition: No  
Conversion: No

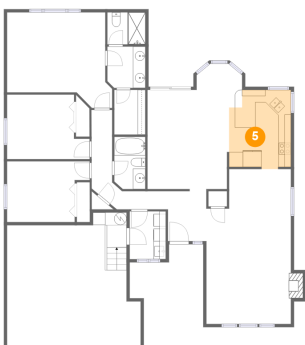
## 4 Floor 1 - Garage



Dimensions: 21'5" x 21'4"  
Area: 397 sq. ft  
Counted as living area: No

Heated: No  
Finished: No  
Enclosed: Yes  
Contiguous: Yes  
Permitted: Yes  
Wet space: No  
Addition: No  
Conversion: No

## 5 Floor 1 - Kitchen

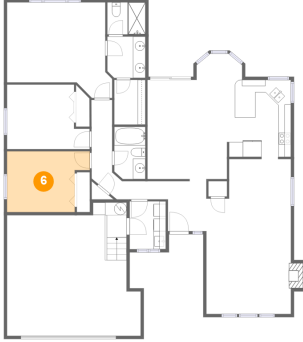


Dimensions: 9'11" x 12'8"  
Area: 117 sq. ft  
Counted as living area: Yes

Heated: Yes  
Finished: Yes  
Enclosed: Yes  
Contiguous: Yes  
Permitted: Yes  
Wet space: No  
Addition: No  
Conversion: No

# 5595 Southwest 150th Court, West Beaverton, Beaverton, Washington County, Oregon, United

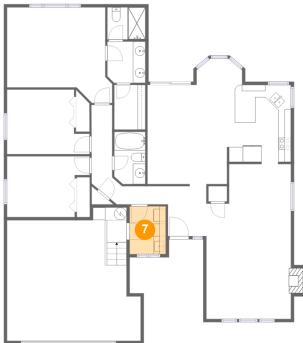
## 6 Floor 1 - Bedroom



Dimensions: 13'3" x 9'9"  
Area: 113 sq. ft  
Counted as living area: Yes

Heated: Yes  
Finished: Yes  
Enclosed: Yes  
Contiguous: Yes  
Permitted: Yes  
Wet space: No  
Addition: No  
Conversion: No

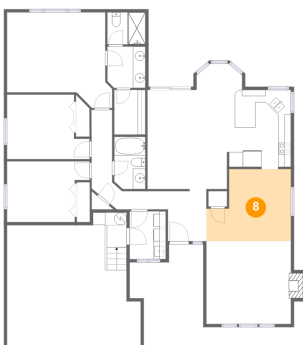
## 7 Floor 1 - Laundry



Dimensions: 5'10" x 7'8"  
Area: 45 sq. ft  
Counted as living area: Yes

Heated: Yes  
Finished: Yes  
Enclosed: Yes  
Contiguous: Yes  
Permitted: Yes  
Wet space: No  
Addition: No  
Conversion: No

## 8 Floor 1 - Dining Area

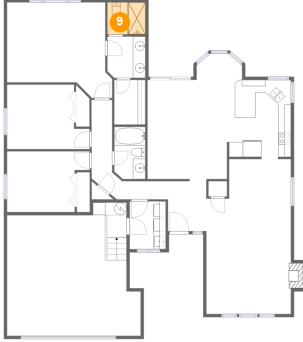


Dimensions: 13'7" x 11'7"  
Area: 133 sq. ft  
Counted as living area: Yes

Heated: Yes  
Finished: Yes  
Enclosed: Yes  
Contiguous: Yes  
Permitted: Yes  
Wet space: No  
Addition: No  
Conversion: No

# 5595 Southwest 150th Court, West Beaverton, Beaverton, Washington County, Oregon, United

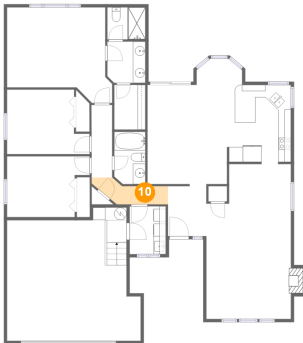
## 9 Floor 1 - Bath



Dimensions: 6'1" x 5'2"  
Area: 31 sq. ft  
Counted as living area: Yes

Heated: Yes  
Finished: Yes  
Enclosed: Yes  
Contiguous: Yes  
Permitted: Yes  
Wet space: Yes  
Addition: No  
Conversion: No

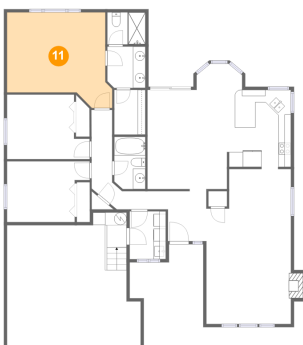
## 10 Floor 1 - Hall



Dimensions: 10'3" x 2'11"  
Area: 35 sq. ft  
Counted as living area: Yes

Heated: Yes  
Finished: Yes  
Enclosed: Yes  
Contiguous: Yes  
Permitted: Yes  
Wet space: No  
Addition: No  
Conversion: No

## 11 Floor 1 - Primary Bedroom

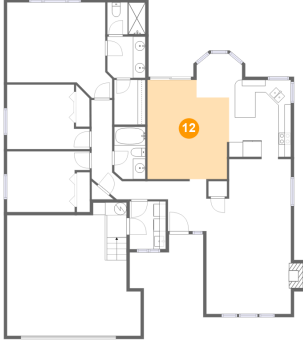


Dimensions: 15'9" x 15'4"  
Area: 215 sq. ft  
Counted as living area: Yes

Heated: Yes  
Finished: Yes  
Enclosed: Yes  
Contiguous: Yes  
Permitted: Yes  
Wet space: No  
Addition: No  
Conversion: No

# 5595 Southwest 150th Court, West Beaverton, Beaverton, Washington County, Oregon, United

## 12 Floor 1 - Family Room



Dimensions: 13'1" x 15'11"  
Area: 191 sq. ft  
Counted as living area: Yes

Heated: Yes  
Finished: Yes  
Enclosed: Yes  
Contiguous: Yes  
Permitted: Yes  
Wet space: No  
Addition: No  
Conversion: No

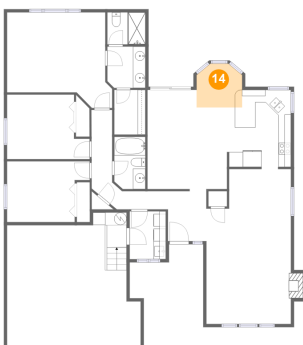
## 13 Floor 1 - W.I.C.



Dimensions: 5'0" x 7'2"  
Area: 36 sq. ft  
Counted as living area: Yes

Heated: Yes  
Finished: Yes  
Enclosed: Yes  
Contiguous: Yes  
Permitted: Yes  
Wet space: No  
Addition: No  
Conversion: No

## 14 Floor 1 - Breakfast Nook



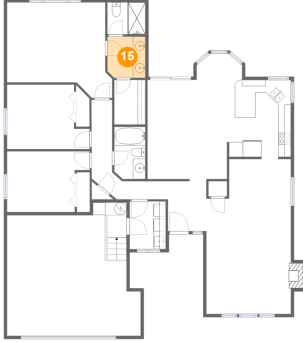
Dimensions: 7'4" x 7'0"  
Area: 47 sq. ft  
Counted as living area: Yes

Heated: Yes  
Finished: Yes  
Enclosed: Yes  
Contiguous: Yes  
Permitted: Yes  
Wet space: No  
Addition: No  
Conversion: No



# 5595 Southwest 150th Court, West Beaverton, Beaverton, Washington County, Oregon, United

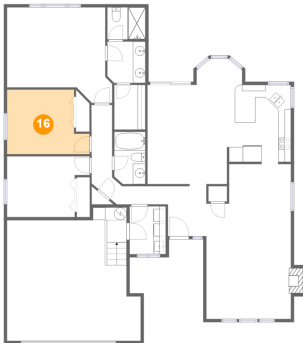
## 15 Floor 1 - Bath



Dimensions: 6'1" x 6'8"  
Area: 40 sq. ft  
Counted as living area: Yes

Heated: Yes  
Finished: Yes  
Enclosed: Yes  
Contiguous: Yes  
Permitted: Yes  
Wet space: Yes  
Addition: No  
Conversion: No

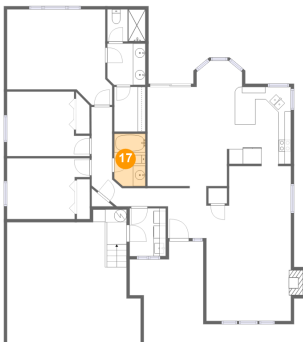
## 16 Floor 1 - Bedroom



Dimensions: 13'3" x 10'4"  
Area: 119 sq. ft  
Counted as living area: Yes

Heated: Yes  
Finished: Yes  
Enclosed: Yes  
Contiguous: Yes  
Permitted: Yes  
Wet space: No  
Addition: No  
Conversion: No

## 17 Floor 1 - Bath



Dimensions: 5'0" x 8'5"  
Area: 41 sq. ft  
Counted as living area: Yes

Heated: Yes  
Finished: Yes  
Enclosed: Yes  
Contiguous: Yes  
Permitted: Yes  
Wet space: Yes  
Addition: No  
Conversion: No