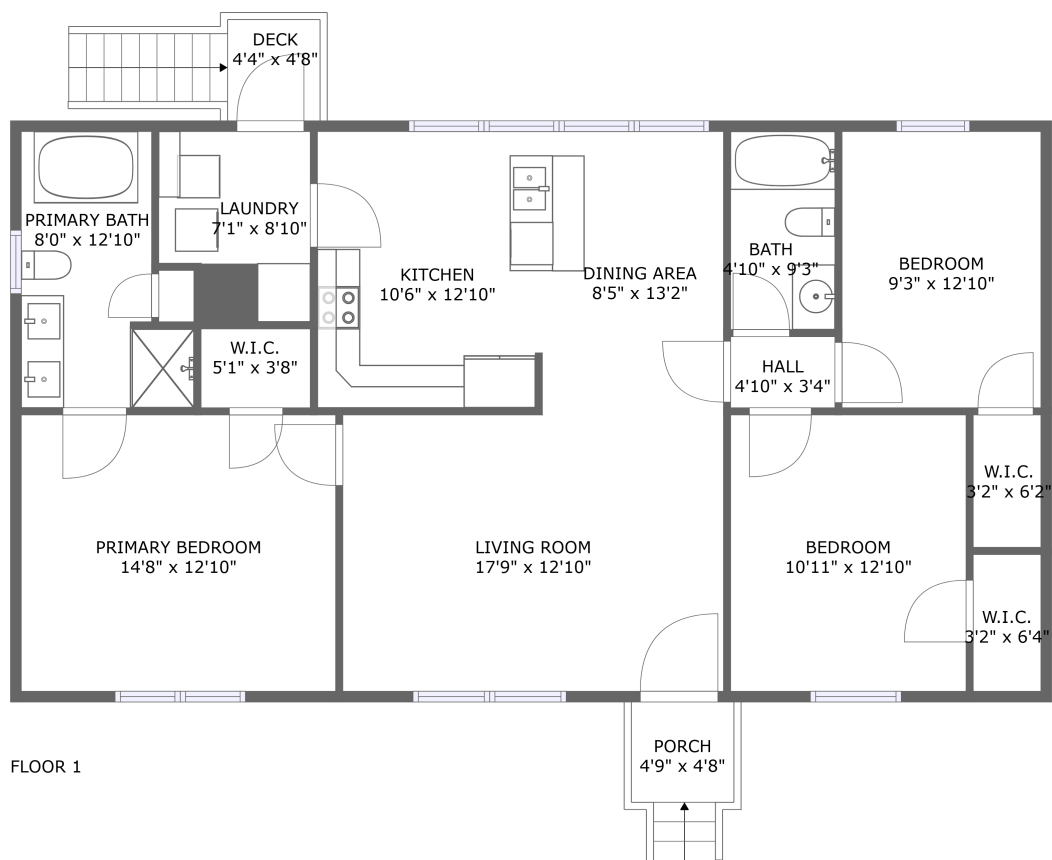


Home report

5006 Fort Lewis Church Road, Cherokee Hills, Salem, Roanoke County, Virginia, United States, 24153



Total Area: 1310 sq. ft

Floor 1: 1310 sq. ft

Excluded: Outdoor Porch 30 sq. ft, Outdoor Deck 44 sq. ft

Property summary

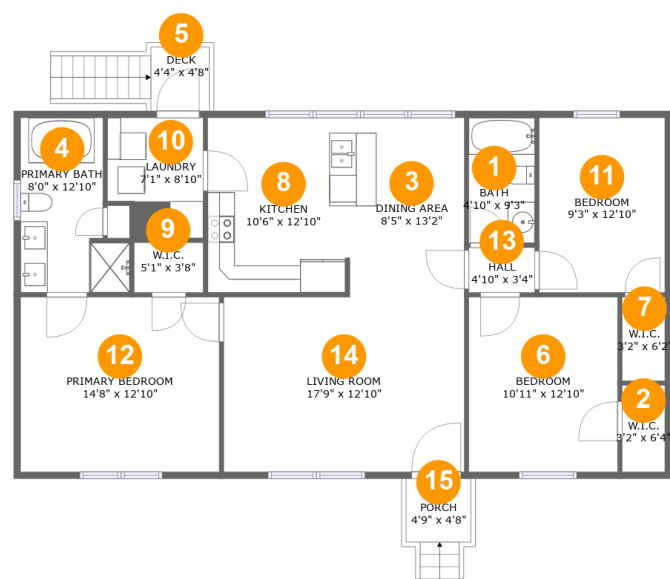
 **1** Floors

 **3** Bedrooms

 **2** Bathrooms

Home report

5006 Fort Lewis Church Road, Cherokee Hills, Salem, Roanoke County, Virginia, United States, 24153



Room dimensions

Floor 1 Total:1310sqft Excluded: 74sqft

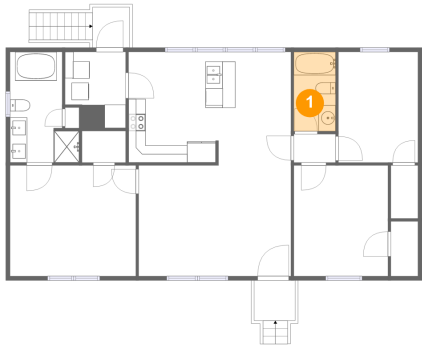
#		Max Dimensions	sqft	Included
1	Bath	4'10" x 9'3"	45 sq. ft	Yes
2	W.I.C.	3'2" x 6'4"	20 sq. ft	Yes
3	Dining Area	8'5" x 13'2"	111 sq. ft	Yes
4	Primary Bath	8'0" x 12'10"	85 sq. ft	Yes
5	Deck	4'4" x 4'8"	44 sq. ft	No
6	Bedroom	10'11" x 12'10"	141 sq. ft	Yes
7	W.I.C.	3'2" x 6'2"	19 sq. ft	Yes
8	Kitchen	10'6" x 12'10"	134 sq. ft	Yes
9	W.I.C.	5'1" x 3'8"	19 sq. ft	Yes
10	Laundry	7'1" x 8'10"	57 sq. ft	Yes
11	Bedroom	9'3" x 12'10"	119 sq. ft	Yes

Home report

5006 Fort Lewis Church Road, Cherokee Hills, Salem, Roanoke County, Virginia, United States, 24153

#		Max Dimensions	sqft	Included
12	Primary Bedroom	14'8" x 12'10"	188 sq. ft	Yes
13	Hall	4'10" x 3'4"	16 sq. ft	Yes
14	Living Room	17'9" x 12'10"	228 sq. ft	Yes
15	Porch	4'9" x 4'8"	30 sq. ft	No

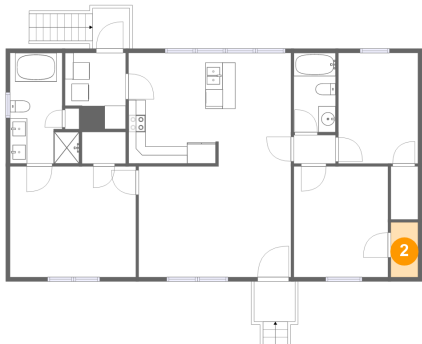
1 Floor 1 - Bath



Max Dimensions: 4'10" x 9'3"
Calculated Area: 45 sq. ft
Included: Yes

Heated: Yes
Finished: Yes
Enclosed: Yes
Contiguous: Yes
Permitted: Yes
Wet space: Yes
Addition: No
Conversion: No

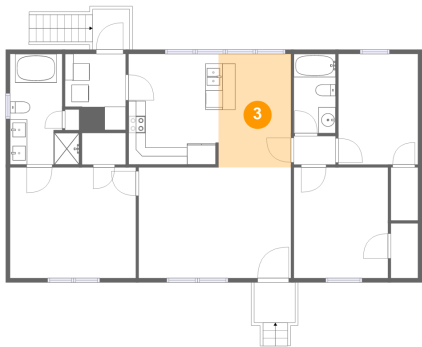
2 Floor 1 - W.I.C.



Max Dimensions: 3'2" x 6'4"
Calculated Area: 20 sq. ft
Included: Yes

Heated: Yes
Finished: Yes
Enclosed: Yes
Contiguous: Yes
Permitted: Yes
Wet space: No
Addition: No
Conversion: No

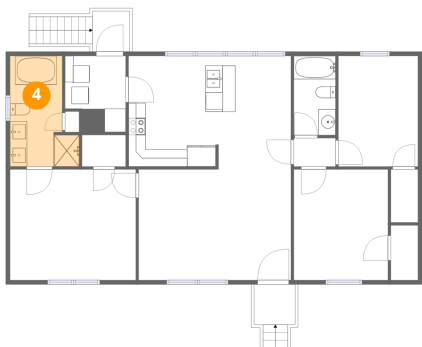
3 Floor 1 - Dining Area



Max Dimensions: 8'5" x 13'2"
Calculated Area: 111 sq. ft
Included: Yes

Heated: Yes
Finished: Yes
Enclosed: Yes
Contiguous: Yes
Permitted: Yes
Wet space: No
Addition: No
Conversion: No

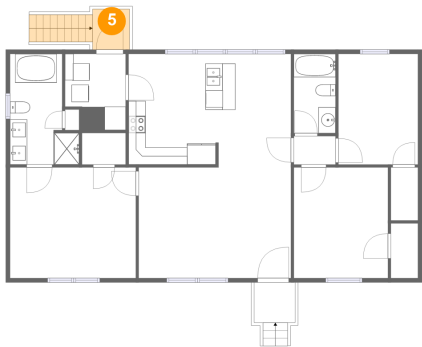
4 Floor 1 - Primary Bath



Max Dimensions: 8'0" x 12'10"
Calculated Area: 85 sq. ft
Included: Yes

Heated: Yes
Finished: Yes
Enclosed: Yes
Contiguous: Yes
Permitted: Yes
Wet space: Yes
Addition: No
Conversion: No

5 Floor 1 - Deck



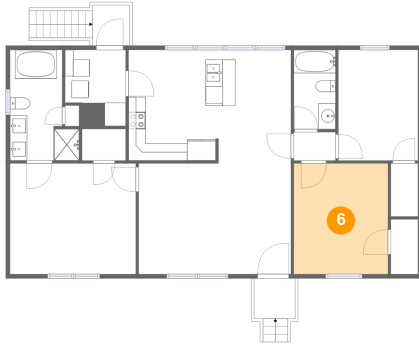
Max Dimensions: 4'4" x 4'8"
Calculated Area: 44 sq. ft
Included: No

Heated: No
Finished: Yes
Enclosed: No
Contiguous: Yes
Permitted: Yes
Wet space: No
Addition: No
Conversion: No

Home report

5006 Fort Lewis Church Road, Cherokee Hills, Salem, Roanoke County, Virginia, United States, 24153

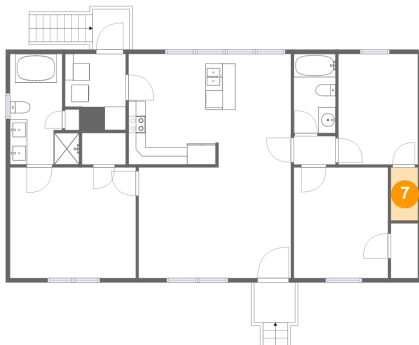
6 Floor 1 - Bedroom



Max Dimensions: 10'11" x 12'10"
Calculated Area: 141 sq. ft
Included: Yes

Heated: Yes
Finished: Yes
Enclosed: Yes
Contiguous: Yes
Permitted: Yes
Wet space: No
Addition: No
Conversion: No

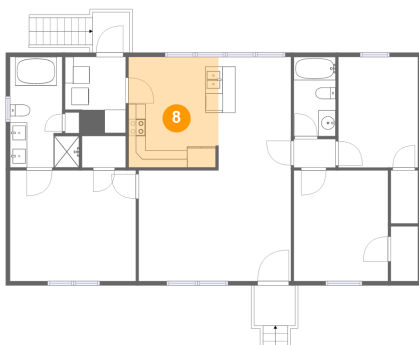
7 Floor 1 - W.I.C.



Max Dimensions: 3'2" x 6'2"
Calculated Area: 19 sq. ft
Included: Yes

Heated: Yes
Finished: Yes
Enclosed: Yes
Contiguous: Yes
Permitted: Yes
Wet space: No
Addition: No
Conversion: No

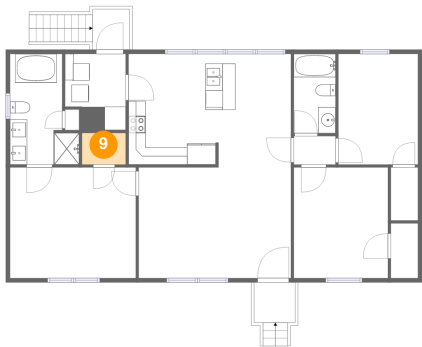
8 Floor 1 - Kitchen



Max Dimensions: 10'6" x 12'10"
Calculated Area: 134 sq. ft
Included: Yes

Heated: Yes
Finished: Yes
Enclosed: Yes
Contiguous: Yes
Permitted: Yes
Wet space: No
Addition: No
Conversion: No

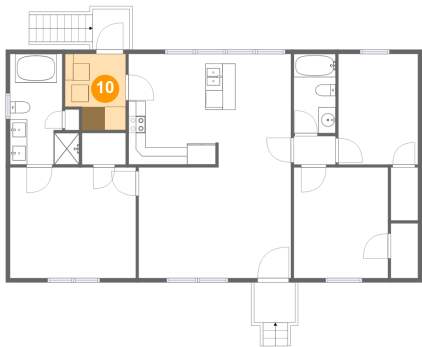
9 Floor 1 - W.I.C.



Max Dimensions: 5'1" x 3'8"
Calculated Area: 19 sq. ft
Included: Yes

Heated: Yes
Finished: Yes
Enclosed: Yes
Contiguous: Yes
Permitted: Yes
Wet space: No
Addition: No
Conversion: No

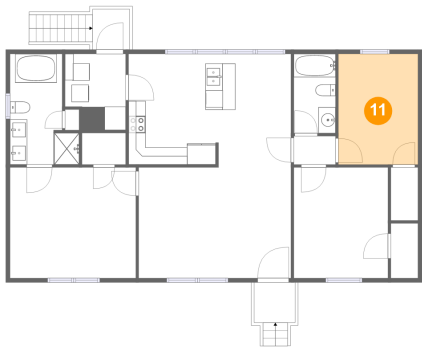
10 Floor 1 - Laundry



Max Dimensions: 7'1" x 8'10"
Calculated Area: 57 sq. ft
Included: Yes

Heated: Yes
Finished: Yes
Enclosed: Yes
Contiguous: Yes
Permitted: Yes
Wet space: No
Addition: No
Conversion: No

11 Floor 1 - Bedroom



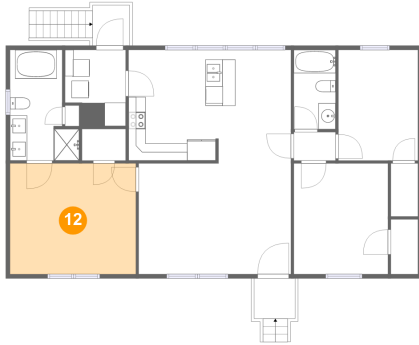
Max Dimensions: 9'3" x 12'10"
Calculated Area: 119 sq. ft
Included: Yes

Heated: Yes
Finished: Yes
Enclosed: Yes
Contiguous: Yes
Permitted: Yes
Wet space: No
Addition: No
Conversion: No

Home report

5006 Fort Lewis Church Road, Cherokee Hills, Salem, Roanoke County, Virginia, United States, 24153

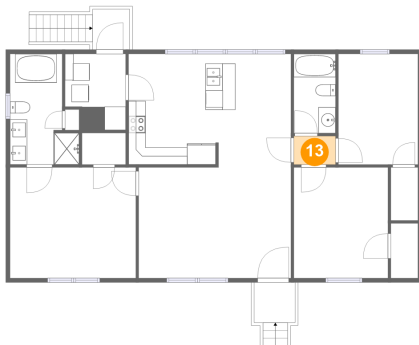
12 Floor 1 - Primary Bedroom



Max Dimensions: 14'8" x 12'10"
Calculated Area: 188 sq. ft
Included: Yes

Heated: Yes
Finished: Yes
Enclosed: Yes
Contiguous: Yes
Permitted: Yes
Wet space: No
Addition: No
Conversion: No

13 Floor 1 - Hall



Max Dimensions: 4'10" x 3'4"
Calculated Area: 16 sq. ft
Included: Yes

Heated: Yes
Finished: Yes
Enclosed: Yes
Contiguous: Yes
Permitted: Yes
Wet space: No
Addition: No
Conversion: No

14 Floor 1 - Living Room

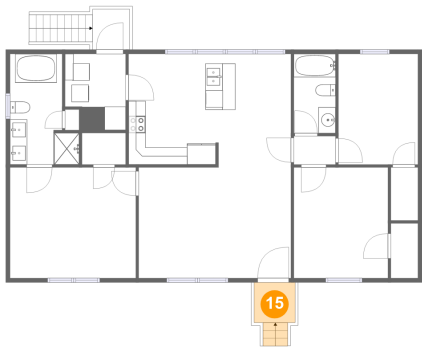


Max Dimensions: 17'9" x 12'10"
Calculated Area: 228 sq. ft
Included: Yes

Heated: Yes
Finished: Yes
Enclosed: Yes
Contiguous: Yes
Permitted: Yes
Wet space: No
Addition: No
Conversion: No

5006 Fort Lewis Church Road, Cherokee Hills, Salem, Roanoke
County, Virginia, United States, 24153

15 Floor 1 - Porch



Max Dimensions: 4'9" x 4'8"
Calculated Area: 30 sq. ft
Included: No

Heated: No
Finished: Yes
Enclosed: No
Contiguous: Yes
Permitted: Yes
Wet space: No
Addition: No
Conversion: No