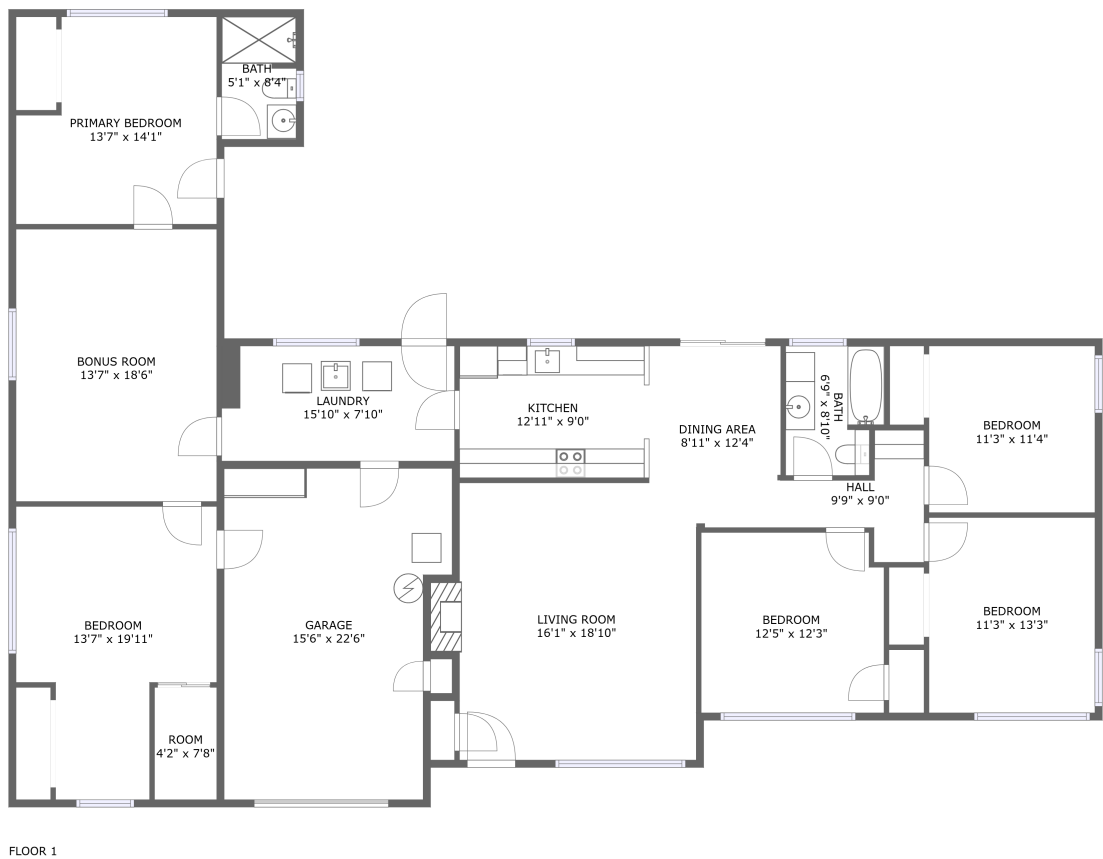


Home report

1611 Camino Drive, Forest Grove, Washington County, Oregon,
United States, 97116



Total Area: 2042 sq. ft

Floor 1: 2042 sq. ft

Excluded: Garage 324 sq. ft, Fireplace 11 sq. ft, Walls: 161 sq. ft

Property summary

 **1** Floors

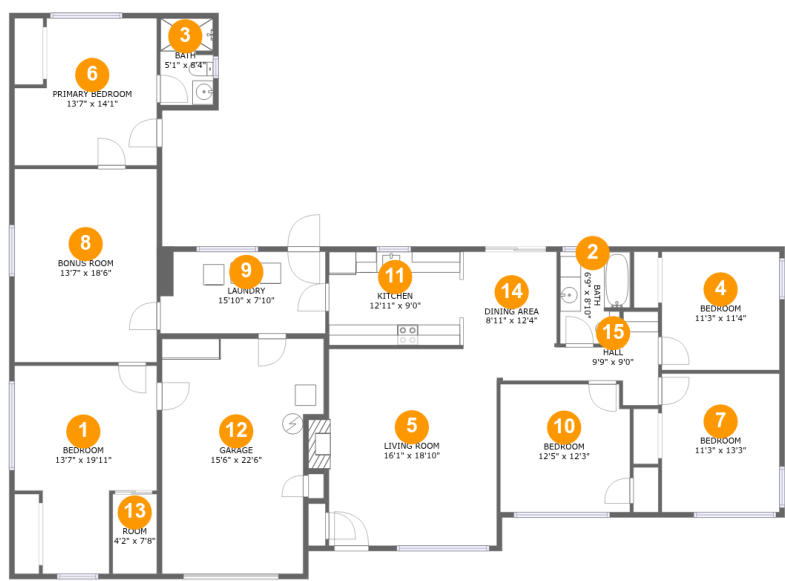
 **5** Bedrooms

 **2** Bathrooms

 **1** Garages

Home report

1611 Camino Drive, Forest Grove, Washington County, Oregon,
United States, 97116



Room dimensions

Floor 1 Total:2042sqft Excluded: 335sqft

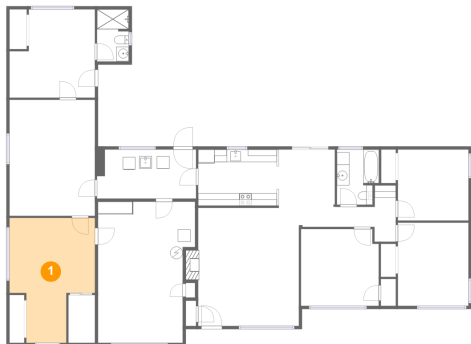
#		Max Dimensions	sqft	Included
1	Bedroom	13'7" x 19'11"	214 sq. ft	Yes
2	Bath	6'9" x 8'10"	55 sq. ft	Yes
3	Bath	5'1" x 8'4"	42 sq. ft	Yes
4	Bedroom	11'3" x 11'4"	128 sq. ft	Yes
5	Living Room	16'1" x 18'10"	308 sq. ft	Yes
6	Primary Bedroom	13'7" x 14'1"	172 sq. ft	Yes
7	Bedroom	11'3" x 13'3"	150 sq. ft	Yes
8	Bonus Room	13'7" x 18'6"	253 sq. ft	Yes
9	Laundry	15'10" x 7'10"	124 sq. ft	Yes
10	Bedroom	12'5" x 12'3"	150 sq. ft	Yes
11	Kitchen	12'11" x 9'0"	116 sq. ft	Yes

Home report

**1611 Camino Drive, Forest Grove, Washington County, Oregon,
United States, 97116**

#		Max Dimensions	sqft	Included
12	Garage	15'6" x 22'6"	319 sq. ft	No
13	Room	4'2" x 7'8"	32 sq. ft	Yes
14	Dining Area	8'11" x 12'4"	106 sq. ft	Yes
15	Hall	9'9" x 9'0"	51 sq. ft	Yes

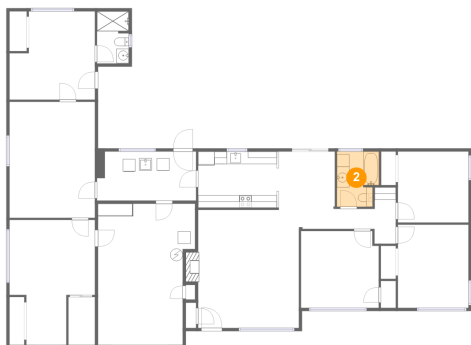
1 Floor 1 - Bedroom



Max Dimensions: 13'7" x 19'11"
Calculated Area: 214 sq. ft
Included: Yes

Heated: Yes
Finished: Yes
Enclosed: Yes
Contiguous: Yes
Permitted: Yes
Wet space: No
Addition: No
Conversion: No

2 Floor 1 - Bath



Max Dimensions: 6'9" x 8'10"
Calculated Area: 55 sq. ft
Included: Yes

Heated: Yes
Finished: Yes
Enclosed: Yes
Contiguous: Yes
Permitted: Yes
Wet space: Yes
Addition: No
Conversion: No

Home report

1611 Camino Drive, Forest Grove, Washington County, Oregon,
United States, 97116

3 Floor 1 - Bath



Max Dimensions: 5'1" x 8'4"
Calculated Area: 42 sq. ft
Included: Yes

Heated: Yes
Finished: Yes
Enclosed: Yes
Contiguous: Yes
Permitted: Yes
Wet space: Yes
Addition: No
Conversion: No

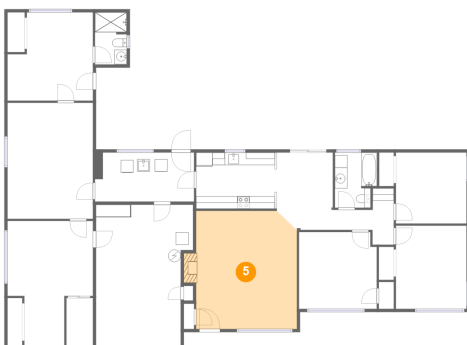
4 Floor 1 - Bedroom



Max Dimensions: 11'3" x
11'4"
Calculated Area: 128 sq. ft
Included: Yes

Heated: Yes
Finished: Yes
Enclosed: Yes
Contiguous:
Yes
Permitted: Yes
Wet space: No
Addition: No
Conversion: No

5 Floor 1 - Living Room



Max Dimensions: 16'1" x
18'10"
Calculated Area: 308 sq. ft
Included: Yes

Heated: Yes
Finished: Yes
Enclosed: Yes
Contiguous:
Yes
Permitted: Yes
Wet space: No
Addition: No
Conversion: No

Home report

1611 Camino Drive, Forest Grove, Washington County, Oregon,
United States, 97116

6 Floor 1 - Primary Bedroom



Max Dimensions: 13'7" x 14'1"
Calculated Area: 172 sq. ft
Included: Yes

Heated: Yes
Finished: Yes
Enclosed: Yes
Contiguous: Yes
Permitted: Yes
Wet space: No
Addition: No
Conversion: No

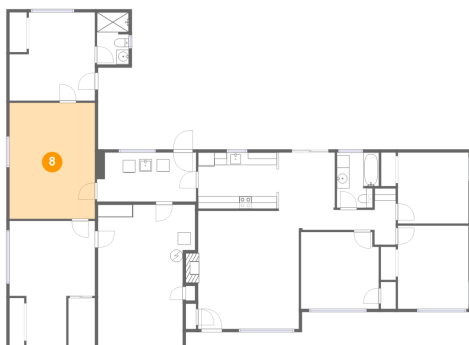
7 Floor 1 - Bedroom



Max Dimensions: 11'3" x 13'3"
Calculated Area: 150 sq. ft
Included: Yes

Heated: Yes
Finished: Yes
Enclosed: Yes
Contiguous: Yes
Permitted: Yes
Wet space: No
Addition: No
Conversion: No

8 Floor 1 - Bonus Room



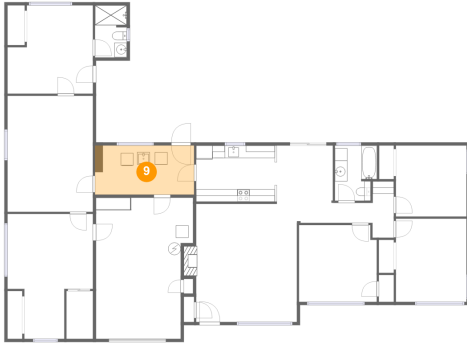
Max Dimensions: 13'7" x 18'6"
Calculated Area: 253 sq. ft
Included: Yes

Heated: Yes
Finished: Yes
Enclosed: Yes
Contiguous: Yes
Permitted: Yes
Wet space: No
Addition: No
Conversion: No

Home report

1611 Camino Drive, Forest Grove, Washington County, Oregon,
United States, 97116

9 Floor 1 - Laundry



Max Dimensions: 15'10" x 7'10"
Calculated Area: 124 sq. ft
Included: Yes

Heated: Yes
Finished: Yes
Enclosed: Yes
Contiguous: Yes
Permitted: Yes
Wet space: No
Addition: No
Conversion: No

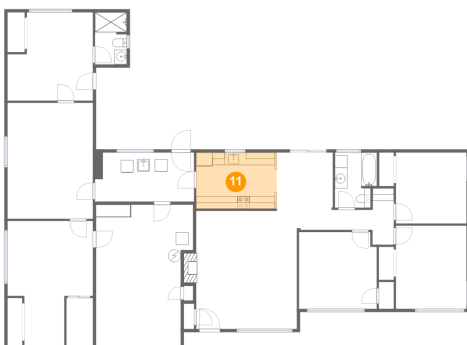
10 Floor 1 - Bedroom



Max Dimensions: 12'5" x 12'3"
Calculated Area: 150 sq. ft
Included: Yes

Heated: Yes
Finished: Yes
Enclosed: Yes
Contiguous: Yes
Permitted: Yes
Wet space: No
Addition: No
Conversion: No

11 Floor 1 - Kitchen



Max Dimensions: 12'11" x 9'0"
Calculated Area: 116 sq. ft
Included: Yes

Heated: Yes
Finished: Yes
Enclosed: Yes
Contiguous: Yes
Permitted: Yes
Wet space: No
Addition: No
Conversion: No

Home report

1611 Camino Drive, Forest Grove, Washington County, Oregon,
United States, 97116

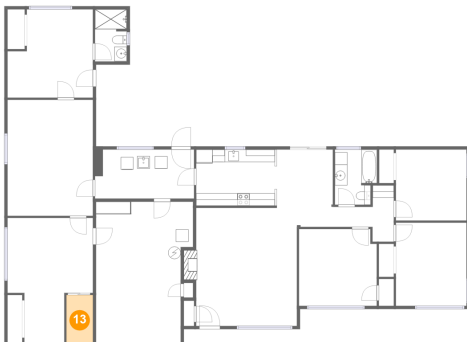
12 Floor 1 - Garage



Max Dimensions: 15'6" x 22'6"
Calculated Area: 319 sq. ft
Included: No

Heated: No
Finished: No
Enclosed: Yes
Contiguous: Yes
Permitted: Yes
Wet space: No
Addition: No
Conversion: No

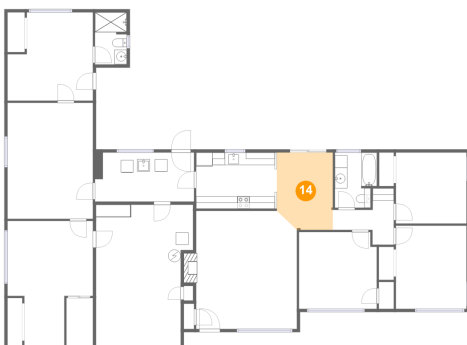
13 Floor 1 - Room



Max Dimensions: 4'2" x 7'8"
Calculated Area: 32 sq. ft
Included: Yes

Heated: Yes
Finished: Yes
Enclosed: Yes
Contiguous: Yes
Permitted: Yes
Wet space: No
Addition: No
Conversion: No

14 Floor 1 - Dining Area



Max Dimensions: 8'11" x 12'4"
Calculated Area: 106 sq. ft
Included: Yes

Heated: Yes
Finished: Yes
Enclosed: Yes
Contiguous: Yes
Permitted: Yes
Wet space: No
Addition: No
Conversion: No

15 Floor 1 - Hall



Max Dimensions: 9'9" x 9'0"
Calculated Area: 51 sq. ft
Included: Yes

Heated: Yes
Finished: Yes
Enclosed: Yes
Contiguous: Yes
Permitted: Yes
Wet space: No
Addition: No
Conversion: No