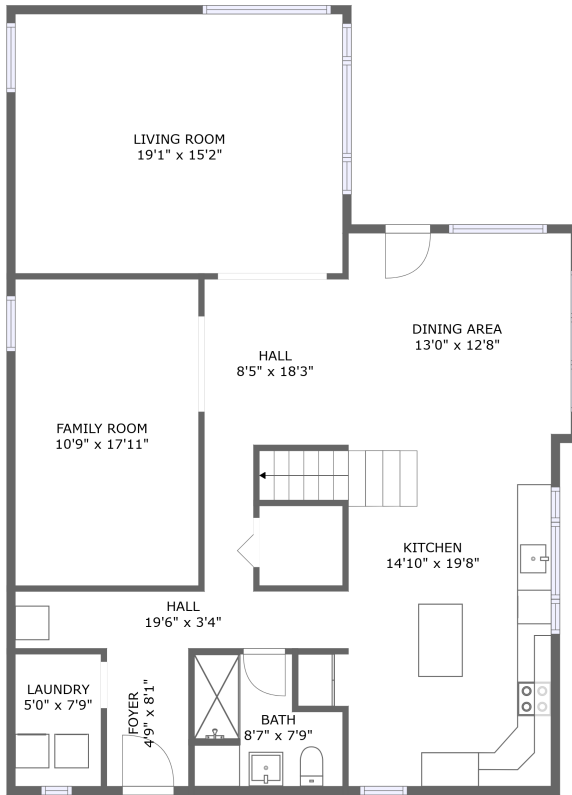
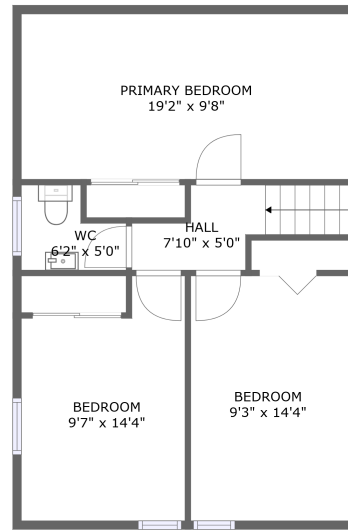


185 West River Street, Upton, Worcester County, Massachusetts, United States, 01568




FLOOR 1



FLOOR 2

Property summary


 **0** Garages

 **3** Bedrooms

 **1** Bathrooms

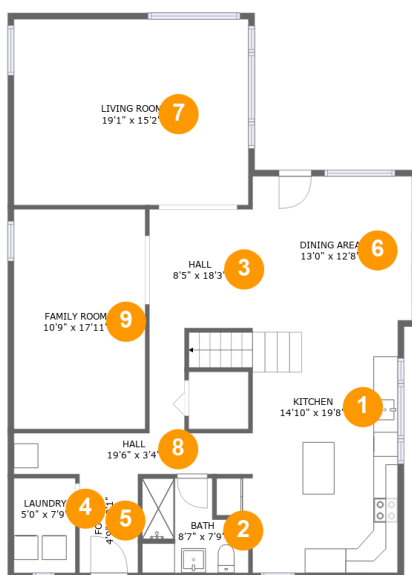
 **1** Half baths

 **2** Floors

 **1,972** Gross living area sqft

 **1,972** Total sqft

185 West River Street, Upton, Worcester County, Massachusetts, United States, 01568

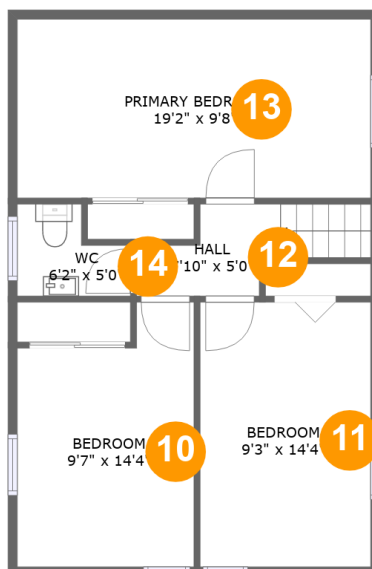


Room dimensions

Floor 1

Total sqft: 1354 Living area: 1354

#		Dimensions	sqft	Counted as living area
1	Kitchen	14'10" x 19'8"	257 sq. ft	Yes
2	Bath	8'7" x 7'9"	56 sq. ft	Yes
3	Hall	8'5" x 18'3"	107 sq. ft	Yes
4	Utility	5'0" x 7'9"	39 sq. ft	Yes
5	Entry	4'9" x 8'1"	39 sq. ft	Yes
6	Dining Room	13'0" x 12'8"	165 sq. ft	Yes
7	Living Room	19'1" x 15'2"	291 sq. ft	Yes
8	Hall	19'6" x 3'4"	65 sq. ft	Yes
9	Living Room	10'9" x 17'11"	192 sq. ft	Yes

**185 West River Street, Upton, Worcester County,
Massachusetts, United States, 01568****Room dimensions**

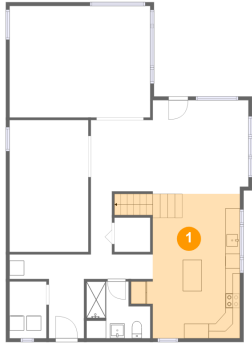
Floor 2

Total sqft: 618 Living area: 618

#		Dimensions	sqft	Counted as living area
10	Bedroom	9'7" x 14'4"	121 sq. ft	Yes
11	Bedroom	9'3" x 14'4"	133 sq. ft	Yes
12	Hall	7'10" x 5'0"	43 sq. ft	Yes
13	Bedroom	19'2" x 9'8"	186 sq. ft	Yes
14	Bath	6'2" x 5'0"	25 sq. ft	Yes

185 West River Street, Upton, Worcester County, Massachusetts, United States, 01568

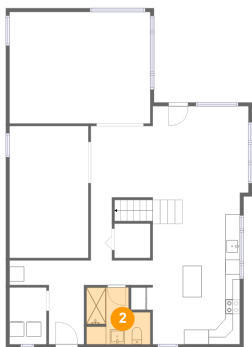
1 Floor 1 - Kitchen



Dimensions: 14'10" x 19'8"
Area: 257 sq. ft
Counted as living area: Yes

Heated: Yes
Finished: Yes
Enclosed: Yes
Contiguous: Yes
Permitted: Yes
Wet space: No
Addition: No
Conversion: No

2 Floor 1 - Bath

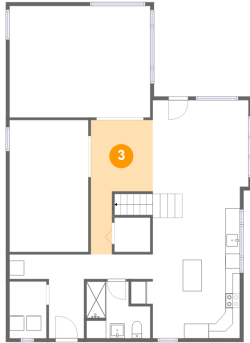


Dimensions: 8'7" x 7'9"
Area: 56 sq. ft
Counted as living area: Yes

Heated: Yes
Finished: Yes
Enclosed: Yes
Contiguous: Yes
Permitted: Yes
Wet space: Yes
Addition: No
Conversion: No

**185 West River Street, Upton, Worcester County,
Massachusetts, United States, 01568**

3 Floor 1 - Hall



Dimensions: 8'5" x 18'3"
Area: 107 sq. ft
Counted as living area: Yes

Heated: Yes
Finished: Yes
Enclosed: Yes
Contiguous: Yes
Permitted: Yes
Wet space: No
Addition: No
Conversion: No

4 Floor 1 - Utility



Dimensions: 5'0" x 7'9"
Area: 39 sq. ft
Counted as living area: Yes

Heated: Yes
Finished: Yes
Enclosed: Yes
Contiguous: Yes
Permitted: Yes
Wet space: No
Addition: No
Conversion: No

5 Floor 1 - Entry

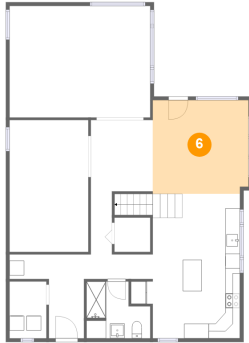


Dimensions: 4'9" x 8'1"
Area: 39 sq. ft
Counted as living area: Yes

Heated: Yes
Finished: Yes
Enclosed: Yes
Contiguous: Yes
Permitted: Yes
Wet space: No
Addition: No
Conversion: No

**185 West River Street, Upton, Worcester County,
Massachusetts, United States, 01568**

6 Floor 1 - Dining Room



Dimensions: 13'0" x 12'8"
Area: 165 sq. ft
Counted as living area: Yes

Heated: Yes
Finished: Yes
Enclosed: Yes
Contiguous: Yes
Permitted: Yes
Wet space: No
Addition: No
Conversion: No

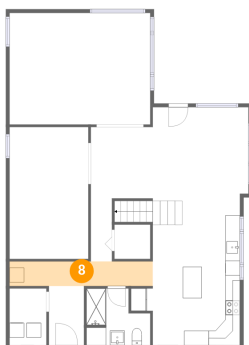
7 Floor 1 - Living Room



Dimensions: 19'1" x 15'2"
Area: 291 sq. ft
Counted as living area: Yes

Heated: Yes
Finished: Yes
Enclosed: Yes
Contiguous: Yes
Permitted: Yes
Wet space: No
Addition: No
Conversion: No

8 Floor 1 - Hall



Dimensions: 19'6" x 3'4"
Area: 65 sq. ft
Counted as living area: Yes

Heated: Yes
Finished: Yes
Enclosed: Yes
Contiguous: Yes
Permitted: Yes
Wet space: No
Addition: No
Conversion: No

**185 West River Street, Upton, Worcester County,
Massachusetts, United States, 01568**

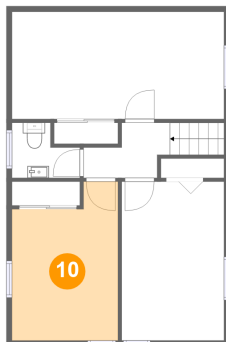
9 Floor 1 - Living Room



Dimensions: 10'9" x 17'11"
Area: 192 sq. ft
Counted as living area: Yes

Heated: Yes
Finished: Yes
Enclosed: Yes
Contiguous: Yes
Permitted: Yes
Wet space: No
Addition: No
Conversion: No

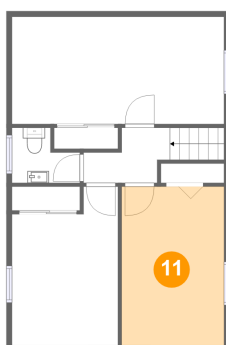
10 Floor 2 - Bedroom



Dimensions: 9'7" x 14'4"
Area: 121 sq. ft
Counted as living area: Yes

Heated: Yes
Finished: Yes
Enclosed: Yes
Contiguous: Yes
Permitted: Yes
Wet space: No
Addition: No
Conversion: No

11 Floor 2 - Bedroom

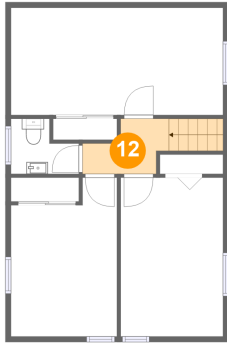


Dimensions: 9'3" x 14'4"
Area: 133 sq. ft
Counted as living area: Yes

Heated: Yes
Finished: Yes
Enclosed: Yes
Contiguous: Yes
Permitted: Yes
Wet space: No
Addition: No
Conversion: No

**185 West River Street, Upton, Worcester County,
Massachusetts, United States, 01568**

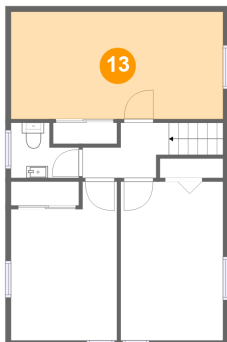
12 Floor 2 - Hall



Dimensions: 7'10" x 5'0"
Area: 43 sq. ft
Counted as living area: Yes

Heated: Yes
Finished: Yes
Enclosed: Yes
Contiguous: Yes
Permitted: Yes
Wet space: No
Addition: No
Conversion: No

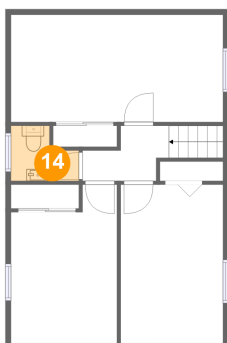
13 Floor 2 - Bedroom



Dimensions: 19'2" x 9'8"
Area: 186 sq. ft
Counted as living area: Yes

Heated: Yes
Finished: Yes
Enclosed: Yes
Contiguous: Yes
Permitted: Yes
Wet space: No
Addition: No
Conversion: No

14 Floor 2 - Bath



Dimensions: 6'2" x 5'0"
Area: 25 sq. ft
Counted as living area: Yes

Heated: Yes
Finished: Yes
Enclosed: Yes
Contiguous: Yes
Permitted: Yes
Wet space: Yes
Addition: No
Conversion: No