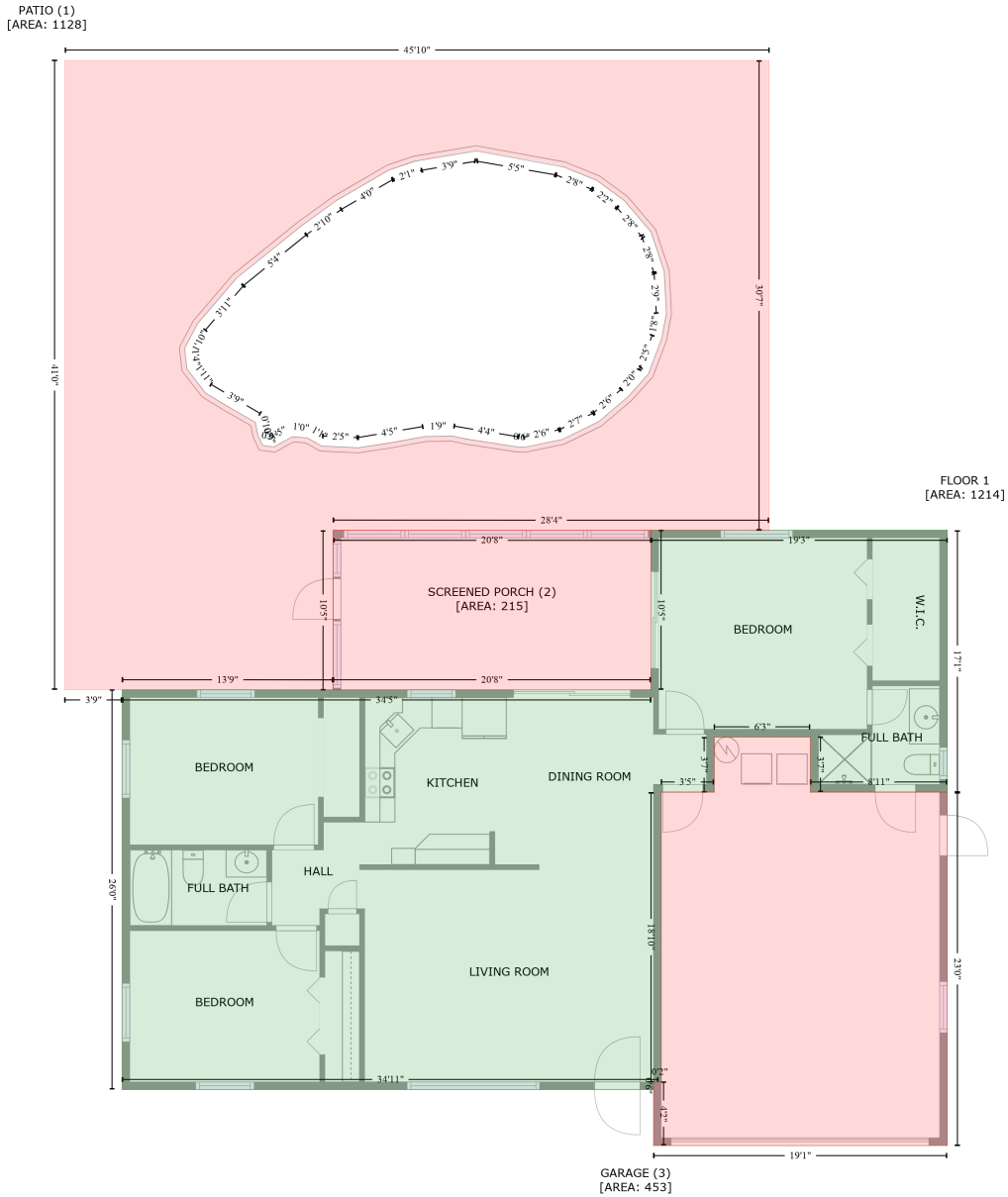


1361 Windsor Drive, Downtown Largo, Clearwater, Pinellas County, Florida, United States, 33756

Gross Living Area: 1214 sq. ft



| Space | Area (sq. ft) | Calculation |
|--------------------------|---------------|--|
| FLOOR 1 (Living area) | 1214 | Coordinate Polygon Area Algorithm using inches $-((779.4 + 779.4) * (441.2 - 645.7) + (779.4 + 672.4) * (645.7 - 645.7) + (672.4 + 672.4) * (645.7 - 602.6) + (672.4 + 597.3) * (602.6 - 602.6) + (597.3 + 597.3) * (602.6 - 645.7) + (597.3 + 555.9) * (645.7 - 645.7) + (555.9 + 555.9) * (645.7 - 872) + (555.9 + 549.9) * (872 - 872) + (549.9 + 549.9) * (872 - 878) + (549.9 + 135) * (878 - 878) + (135 + 135) * (878 - 565.9) + (135 + 299.8) * (565.9 - 565.9) + (299.8 + 299.8) * (565.9 - 565.9) + (299.8 + 547.9) * (565.9 - 565.9) + (547.9 + 547.9) * (565.9 - 441.3) + (547.9 + 640.3) * (441.3 - 441.3) + (640.3 + 640.3) * (441.3 - 441.2) + (640.3 + 779.4) * (441.2 - 441.2)) * 0.5 * 0.00694$ |

1361 Windsor Drive, Downtown Largo, Clearwater, Pinellas County, Florida, United States, 33756

Gross Living Area: 1214 sq. ft

| Space | Area (sq. ft) | Calculation <small>Coordinate Polygon Area Algorithm using inches</small> |
|-------------------------------------|---------------|---|
| PATIO (Non-living area) | 1128 | $\begin{aligned} & -((640.3 + 640.3) * (74.2 - 441.3) + (640.3 + 299.8) * (441.3 - 441.2) + (299.8 + 299.8) * (441.2 - 565.9) + (299.8 + 135) * (565.9 - 565.9) + (135 + 90.1) * (565.9 - 565.9) + (90.1 + 90.1) * (565.9 - 74.2) + (90.1 + 640.3) * (74.2 - 74.2)) * 0.5 * 0.00694 + -((411.7 + 367.4) * (145.1 - 152.4) + (367.4 + 343.4) * (152.4 - 160) + (343.4 + 302.1) * (160 - 184) + (302.1 + 274.2) * (184 - 204.2) + (274.2 + 224.3) * (204.2 - 244.5) + (224.3 + 193.9) * (244.5 - 280) + (193.9 + 183.8) * (280 - 299.3) + (183.8 + 185.6) * (299.3 - 315.2) + (185.6 + 199.9) * (315.2 - 333.9) + (199.9 + 239) * (333.9 - 356.9) + (239 + 241) * (356.9 - 367) + (241 + 244.8) * (367 - 375.1) + (244.8 + 253.6) * (375.1 - 376.1) + (253.6 + 268.2) * (376.1 - 368.2) + (268.2 + 279.6) * (368.2 - 369.1) + (279.6 + 290.8) * (369.1 - 375.5) + (290.8 + 319.3) * (375.5 - 376.8) + (319.3 + 371.2) * (376.8 - 368.1) + (371.2 + 392.5) * (368.1 - 367.6) + (392.5 + 443.5) * (367.6 - 376.1) + (443.5 + 449.7) * (376.1 - 376.4) + (449.7 + 478.9) * (376.4 - 370.3) + (478.9 + 507.1) * (370.3 - 356.4) + (507.1 + 530) * (356.4 - 337) + (530 + 546) * (337 - 319.2) + (546 + 556.4) * (319.2 - 291.6) + (556.4 + 560) * (291.6 - 271.8) + (560 + 558.2) * (271.8 - 239.1) + (558.2 + 548) * (239.1 - 208.3) + (548 + 526.9) * (208.3 - 183.7) + (526.9 + 506) * (183.7 - 168.2) + (506 + 475.9) * (168.2 - 156.2) + (475.9 + 411.7) * (156.2 - 145.1)) * 0.5 * 0.00694 \end{aligned}$ |
| SCREENED PORCH (Non-living area) | 215 | $-((299.8 + 547.9) * (441.2 - 441.3) + (547.9 + 547.9) * (441.3 - 565.9) + (547.9 + 299.8) * (565.9 - 565.9) + (299.8 + 299.8) * (565.9 - 441.2)) * 0.5 * 0.00694$ |
| GARAGE (Non-living area) | 453 | $\begin{aligned} & -((672.4 + 672.4) * (602.6 - 645.7) + (672.4 + 779.4) * (645.7 - 645.7) + (779.4 + 779.4) * (645.7 - 921.7) + (779.4 + 549.9) * (921.7 - 921.7) + (549.9 + 549.9) * (921.7 - 872) + (549.9 + 555.9) * (872 - 872) + (555.9 + 555.9) * (872 - 645.7) + (555.9 + 597.3) * (645.7 - 645.7) + (597.3 + 597.3) * (645.7 - 602.6) + (597.3 + 672.4) * (602.6 - 602.6)) * 0.5 * 0.00694 \end{aligned}$ |