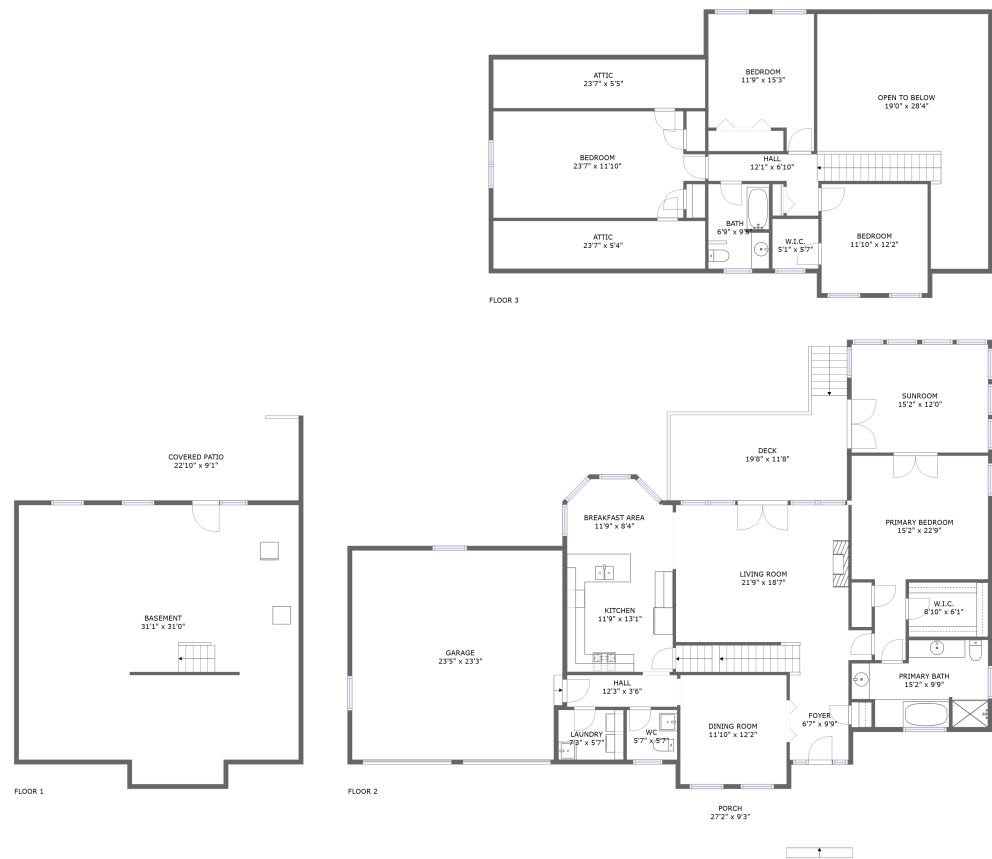




Home report


5983 Landview Drive, Homewood, Cave Spring, Roanoke,
Roanoke County, Virginia, United States, 24018





Property summary


 **1** Garages


 **4** Bedrooms

 **2** Bathrooms

 **1** Half baths

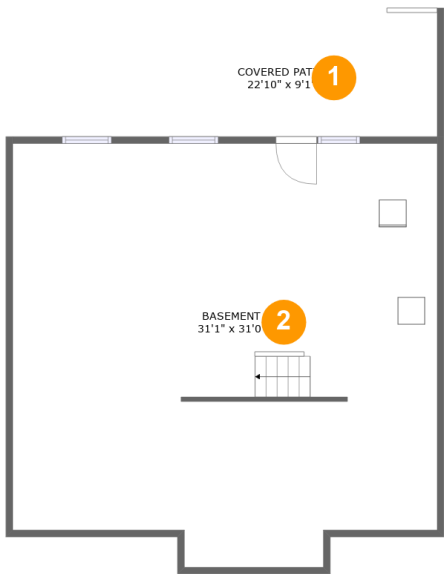
 **3** Floors

 **2,574** Gross living area sqft

 **5,419** Total sqft

Home report

5983 Landview Drive, Homewood, Cave Spring, Roanoke,
Roanoke County, Virginia, United States, 24018



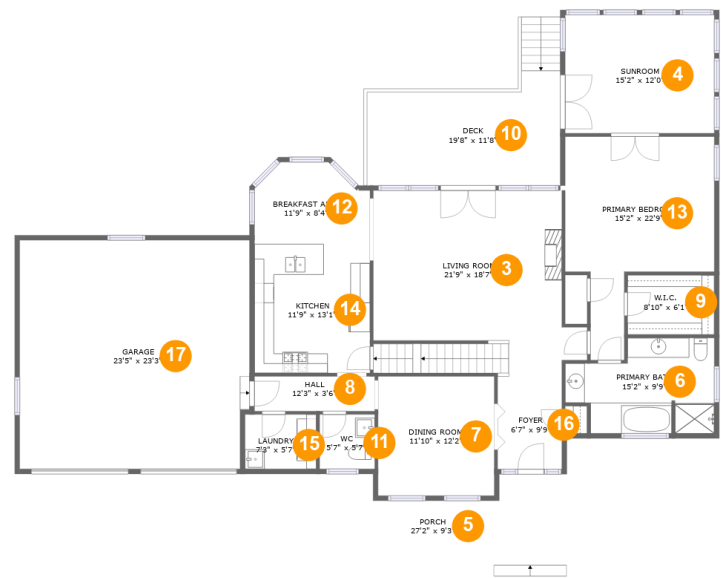
Room dimensions

Floor 1 Total sqft: 1179 Living area: 0

#		Dimensions	sqft	Counted as living area
1	Covered Patio	22'10" x 9'1"	207 sq. ft	No
2	Basement	31'1" x 31'0"	909 sq. ft	No

Home report

5983 Landview Drive, Homewood, Cave Spring, Roanoke,
Roanoke County, Virginia, United States, 24018



Room dimensions

Floor 2 Total sqft: 2684 Living area: 1698

#		Dimensions	sqft	Counted as living area
3	Living Room	21'9" x 18'7"	361 sq. ft	Yes
4	Sunroom	15'2" x 12'0"	183 sq. ft	Yes
5	Porch	27'2" x 9'3"	218 sq. ft	No
6	Primary Bath	15'2" x 9'9"	122 sq. ft	Yes
7	Dining Room	11'10" x 12'2"	144 sq. ft	Yes
8	Hall	12'3" x 3'6"	43 sq. ft	Yes
9	W.I.C.	8'10" x 6'1"	54 sq. ft	Yes
10	Deck	19'8" x 11'8"	195 sq. ft	No
11	WC	5'7" x 5'7"	31 sq. ft	Yes
12	Breakfast Area	11'9" x 8'4"	86 sq. ft	Yes
13	Primary Bedroom	15'2" x 22'9"	239 sq. ft	Yes

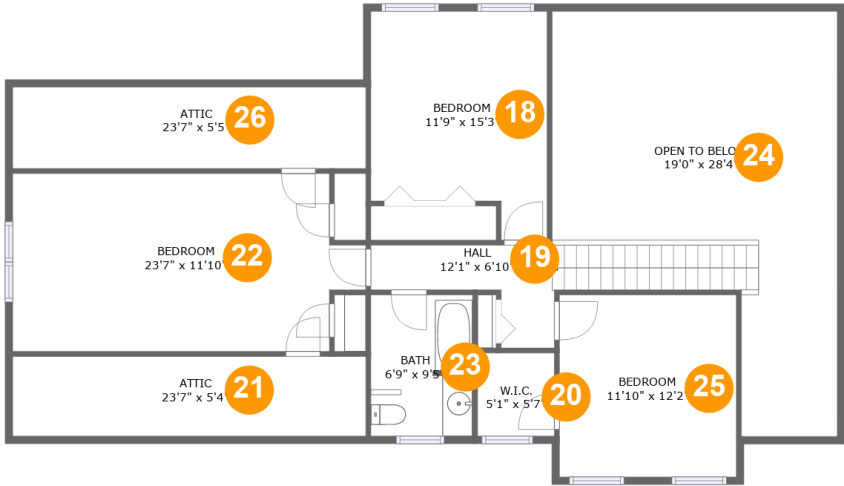
Home report

**5983 Landview Drive, Homewood, Cave Spring, Roanoke,
Roanoke County, Virginia, United States, 24018**

#		Dimensions	sqft	Counted as living area
14	Kitchen	11'9" x 13'1"	154 sq. ft	Yes
15	Laundry	7'3" x 5'7"	40 sq. ft	Yes
16	Foyer	6'7" x 9'9"	64 sq. ft	Yes
17	Garage	23'5" x 23'3"	538 sq. ft	No

Home report

5983 Landview Drive, Homewood, Cave Spring, Roanoke,
Roanoke County, Virginia, United States, 24018



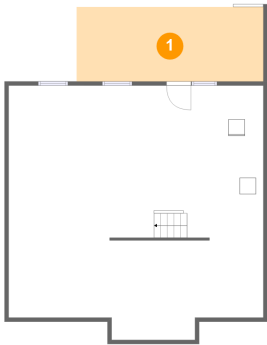
Room dimensions

Floor 3 Total sqft: 1556 Living area: 876

#		Dimensions	sqft	Counted as living area
18	Bedroom	11'9" x 15'3"	157 sq. ft	Yes
19	Hall	12'1" x 6'10"	96 sq. ft	Yes
20	W.I.C.	5'1" x 5'7"	28 sq. ft	Yes
21	Attic	23'7" x 5'4"	73 sq. ft	No
22	Bedroom	23'7" x 11'10"	258 sq. ft	Yes
23	Bath	6'9" x 9'5"	63 sq. ft	Yes
24	Open To Below	19'0" x 28'4"	370 sq. ft	No
25	Bedroom	11'10" x 12'2"	143 sq. ft	Yes
26	Attic	23'7" x 5'5"	72 sq. ft	No

5983 Landview Drive, Homewood, Cave Spring, Roanoke,
Roanoke County, Virginia, United States, 24018

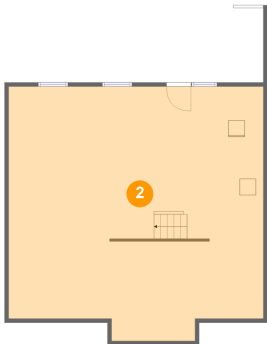
1 Floor 1 - Covered Patio



Dimensions: 22'10" x 9'1"
Area: 207 sq. ft
Counted as living area: No

Heated: No
Finished: Yes
Enclosed: No
Contiguous: Yes
Permitted: Yes
Wet space: No
Addition: No
Conversion: No

2 Floor 1 - Basement



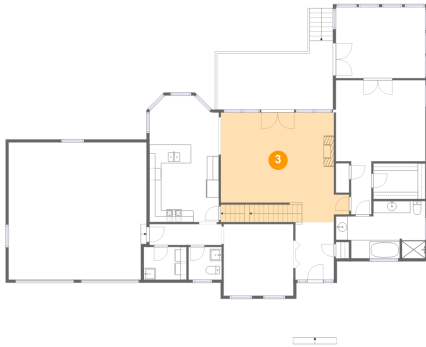
Dimensions: 31'1" x 31'0"
Area: 909 sq. ft
Counted as living area: No

Heated: Yes
Finished: No
Enclosed: Yes
Contiguous: Yes
Permitted: Yes
Wet space: No
Addition: No
Conversion: No

Home report

5983 Landview Drive, Homewood, Cave Spring, Roanoke,
Roanoke County, Virginia, United States, 24018

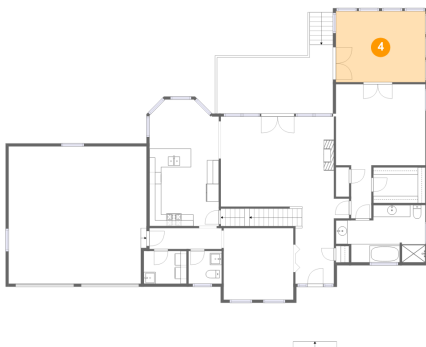
3 Floor 2 - Living Room



Dimensions: 21'9" x 18'7"
Area: 361 sq. ft
Counted as living area: Yes

Heated: Yes
Finished: Yes
Enclosed: Yes
Contiguous: Yes
Permitted: Yes
Wet space: No
Addition: No
Conversion: No

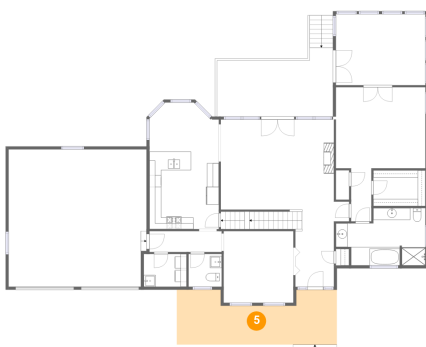
4 Floor 2 - Sunroom



Dimensions: 15'2" x 12'0"
Area: 183 sq. ft
Counted as living area: Yes

Heated: Yes
Finished: Yes
Enclosed: Yes
Contiguous: Yes
Permitted: Yes
Wet space: No
Addition: No
Conversion: No

5 Floor 2 - Porch



Dimensions: 27'2" x 9'3"
Area: 218 sq. ft
Counted as living area: No

Heated: No
Finished: Yes
Enclosed: No
Contiguous: Yes
Permitted: Yes
Wet space: No
Addition: No
Conversion: No

5983 Landview Drive, Homewood, Cave Spring, Roanoke,
Roanoke County, Virginia, United States, 24018

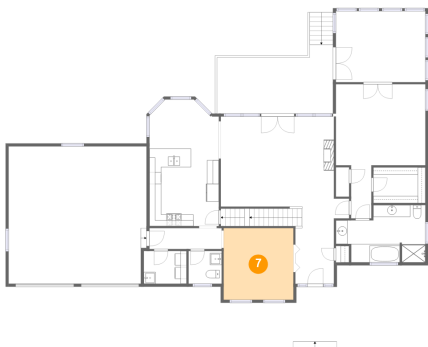
6 Floor 2 - Primary Bath



Dimensions: 15'2" x 9'9"
Area: 122 sq. ft
Counted as living area: Yes

Heated: Yes
Finished: Yes
Enclosed: Yes
Contiguous: Yes
Permitted: Yes
Wet space: Yes
Addition: No
Conversion: No

7 Floor 2 - Dining Room



Dimensions: 11'10" x 12'2"
Area: 144 sq. ft
Counted as living area: Yes

Heated: Yes
Finished: Yes
Enclosed: Yes
Contiguous: Yes
Permitted: Yes
Wet space: No
Addition: No
Conversion: No

8 Floor 2 - Hall



Dimensions: 12'3" x 3'6"
Area: 43 sq. ft
Counted as living area: Yes

Heated: Yes
Finished: Yes
Enclosed: Yes
Contiguous: Yes
Permitted: Yes
Wet space: No
Addition: No
Conversion: No

5983 Landview Drive, Homewood, Cave Spring, Roanoke,
Roanoke County, Virginia, United States, 24018

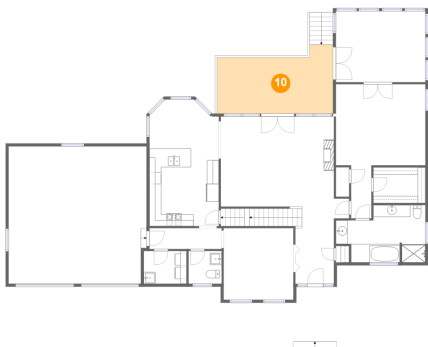
9 Floor 2 - W.I.C.



Dimensions: 8'10" x 6'1"
Area: 54 sq. ft
Counted as living area: Yes

Heated: Yes
Finished: Yes
Enclosed: Yes
Contiguous: Yes
Permitted: Yes
Wet space: No
Addition: No
Conversion: No

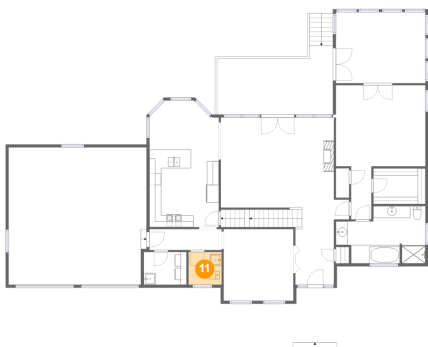
10 Floor 2 - Deck



Dimensions: 19'8" x 11'8"
Area: 195 sq. ft
Counted as living area: No

Heated: No
Finished: Yes
Enclosed: No
Contiguous: Yes
Permitted: Yes
Wet space: No
Addition: No
Conversion: No

11 Floor 2 - WC

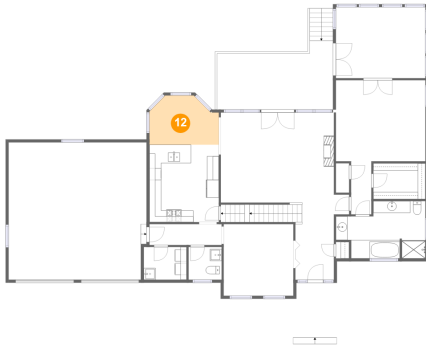


Dimensions: 5'7" x 5'7"
Area: 31 sq. ft
Counted as living area: Yes

Heated: Yes
Finished: Yes
Enclosed: Yes
Contiguous: Yes
Permitted: Yes
Wet space: Yes
Addition: No
Conversion: No

5983 Landview Drive, Homewood, Cave Spring, Roanoke,
Roanoke County, Virginia, United States, 24018

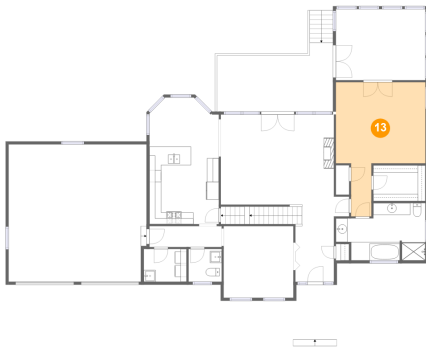
12 Floor 2 - Breakfast Area



Dimensions: 11'9" x 8'4"
Area: 86 sq. ft
Counted as living area: Yes

Heated: Yes
Finished: Yes
Enclosed: Yes
Contiguous: Yes
Permitted: Yes
Wet space: No
Addition: No
Conversion: No

13 Floor 2 - Primary Bedroom



Dimensions: 15'2" x 22'9"
Area: 239 sq. ft
Counted as living area: Yes

Heated: Yes
Finished: Yes
Enclosed: Yes
Contiguous: Yes
Permitted: Yes
Wet space: No
Addition: No
Conversion: No

14 Floor 2 - Kitchen

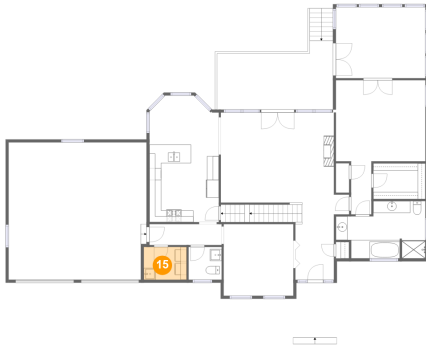


Dimensions: 11'9" x 13'1"
Area: 154 sq. ft
Counted as living area: Yes

Heated: Yes
Finished: Yes
Enclosed: Yes
Contiguous: Yes
Permitted: Yes
Wet space: No
Addition: No
Conversion: No

5983 Landview Drive, Homewood, Cave Spring, Roanoke,
Roanoke County, Virginia, United States, 24018

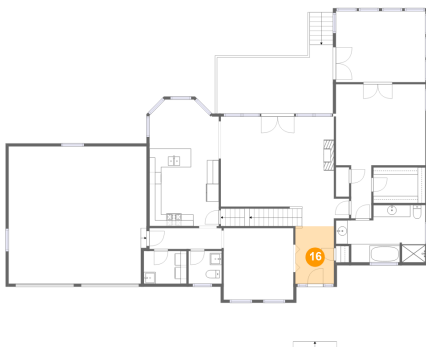
15 Floor 2 - Laundry



Dimensions: 7'3" x 5'7"
Area: 40 sq. ft
Counted as living area: Yes

Heated: Yes
Finished: Yes
Enclosed: Yes
Contiguous: Yes
Permitted: Yes
Wet space: No
Addition: No
Conversion: No

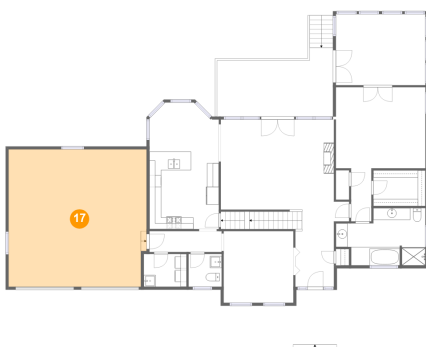
16 Floor 2 - Foyer



Dimensions: 6'7" x 9'9"
Area: 64 sq. ft
Counted as living area: Yes

Heated: Yes
Finished: Yes
Enclosed: Yes
Contiguous: Yes
Permitted: Yes
Wet space: No
Addition: No
Conversion: No

17 Floor 2 - Garage



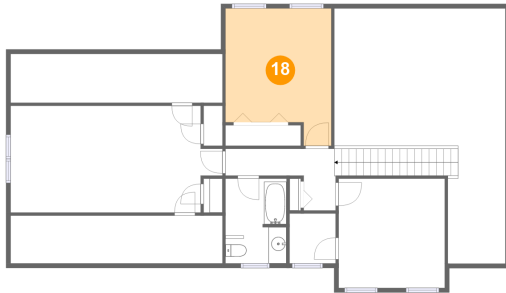
Dimensions: 23'5" x 23'3"
Area: 538 sq. ft
Counted as living area: No

Heated: No
Finished: No
Enclosed: Yes
Contiguous: Yes
Permitted: Yes
Wet space: No
Addition: No
Conversion: No

Home report

5983 Landview Drive, Homewood, Cave Spring, Roanoke,
Roanoke County, Virginia, United States, 24018

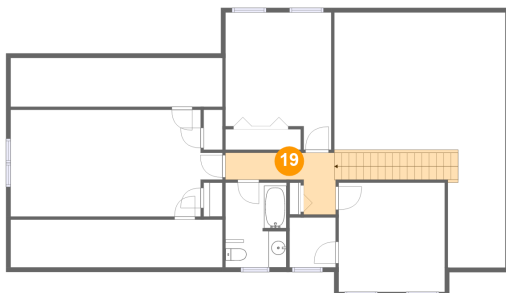
18 Floor 3 - Bedroom



Dimensions: 11'9" x 15'3"
Area: 157 sq. ft
Counted as living area: Yes

Heated: Yes
Finished: Yes
Enclosed: Yes
Contiguous: Yes
Permitted: Yes
Wet space: No
Addition: No
Conversion: No

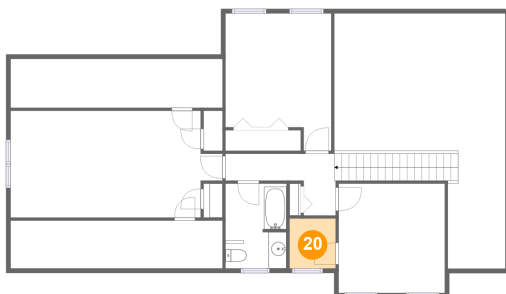
19 Floor 3 - Hall



Dimensions: 12'1" x 6'10"
Area: 96 sq. ft
Counted as living area: Yes

Heated: Yes
Finished: Yes
Enclosed: Yes
Contiguous: Yes
Permitted: Yes
Wet space: No
Addition: No
Conversion: No

20 Floor 3 - W.I.C.



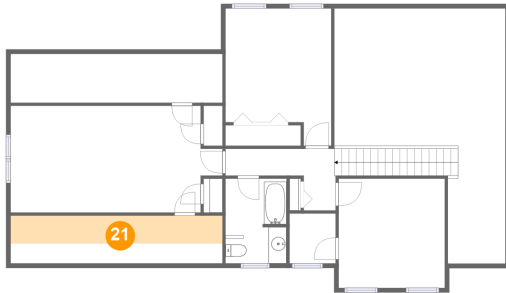
Dimensions: 5'1" x 5'7"
Area: 28 sq. ft
Counted as living area: Yes

Heated: Yes
Finished: Yes
Enclosed: Yes
Contiguous: Yes
Permitted: Yes
Wet space: No
Addition: No
Conversion: No

Home report

5983 Landview Drive, Homewood, Cave Spring, Roanoke,
Roanoke County, Virginia, United States, 24018

21 Floor 3 - Attic



Dimensions: 23'7" x 5'4"
Area: 73 sq. ft
Counted as living area: No

Heated: No
Finished: No
Enclosed: Yes
Contiguous: Yes
Permitted: Yes
Wet space: No
Addition: No
Conversion: No

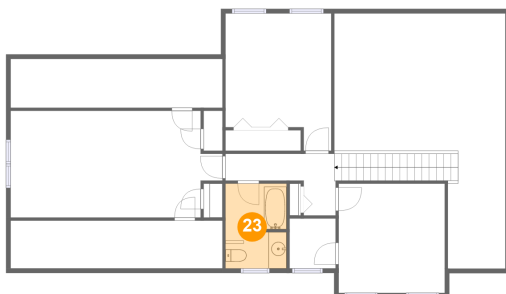
22 Floor 3 - Bedroom



Dimensions: 23'7" x 11'10"
Area: 258 sq. ft
Counted as living area: Yes

Heated: Yes
Finished: Yes
Enclosed: Yes
Contiguous: Yes
Permitted: Yes
Wet space: No
Addition: No
Conversion: No

23 Floor 3 - Bath



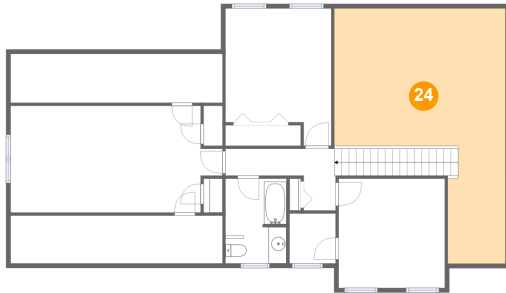
Dimensions: 6'9" x 9'5"
Area: 63 sq. ft
Counted as living area: Yes

Heated: Yes
Finished: Yes
Enclosed: Yes
Contiguous: Yes
Permitted: Yes
Wet space: Yes
Addition: No
Conversion: No

Home report

5983 Landview Drive, Homewood, Cave Spring, Roanoke,
Roanoke County, Virginia, United States, 24018

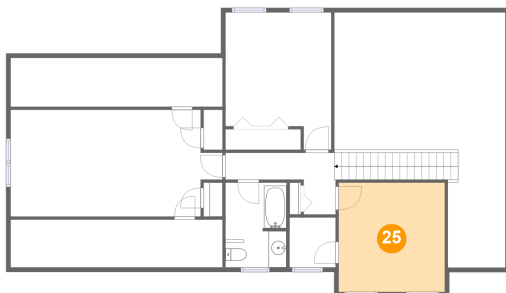
24 Floor 3 - Open To Below



Dimensions: 19'0" x 28'4"
Area: 370 sq. ft
Counted as living area: No

Heated: No
Finished: No
Enclosed: No
Contiguous: Yes
Permitted: No
Wet space: No
Addition: No
Conversion: No

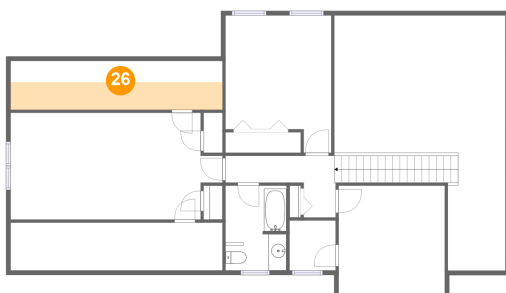
25 Floor 3 - Bedroom



Dimensions: 11'10" x 12'2"
Area: 143 sq. ft
Counted as living area: Yes

Heated: Yes
Finished: Yes
Enclosed: Yes
Contiguous: Yes
Permitted: Yes
Wet space: No
Addition: No
Conversion: No

26 Floor 3 - Attic



Dimensions: 23'7" x 5'5"
Area: 72 sq. ft
Counted as living area: No

Heated: No
Finished: No
Enclosed: Yes
Contiguous: Yes
Permitted: Yes
Wet space: No
Addition: No
Conversion: No