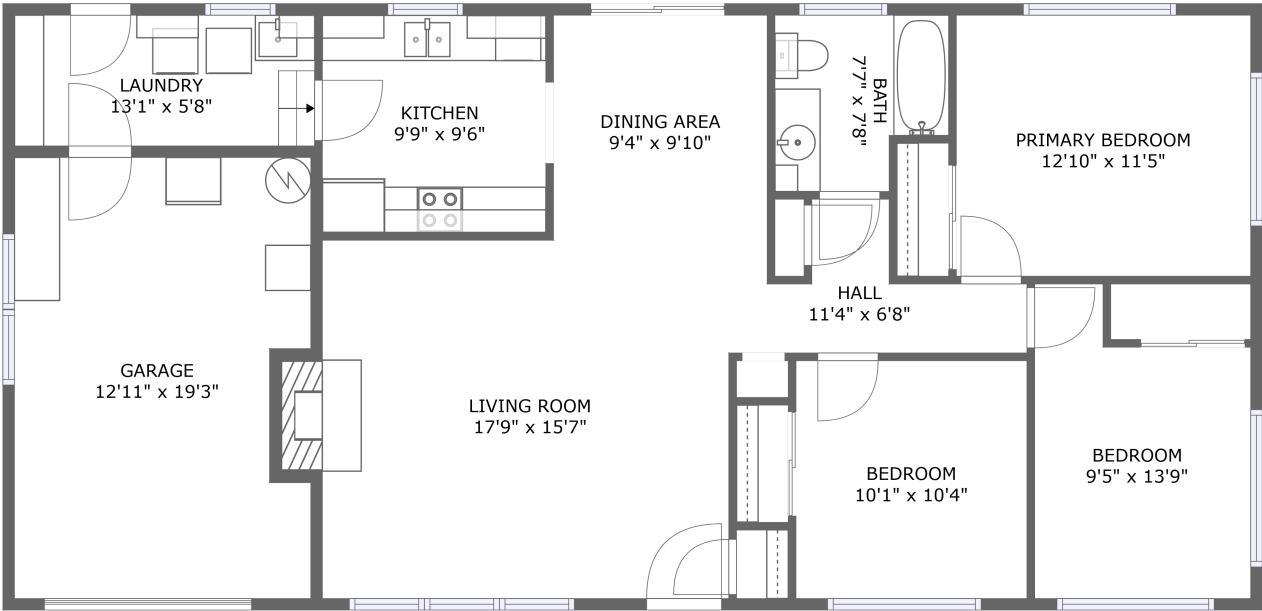


Home report

456 Northwest Dennis Avenue, Mahan, Hillsboro, Washington
County, Oregon, United States, 97124



FLOOR 1

Total Area: 1033 sq. ft

Floor 1: 1033 sq. ft

Excluded: Garage 238 sq. ft, Laundry 75 sq. ft, Fireplace 10 sq. ft, Walls: 94 sq. ft

Property summary



1 Floors



3 Bedrooms

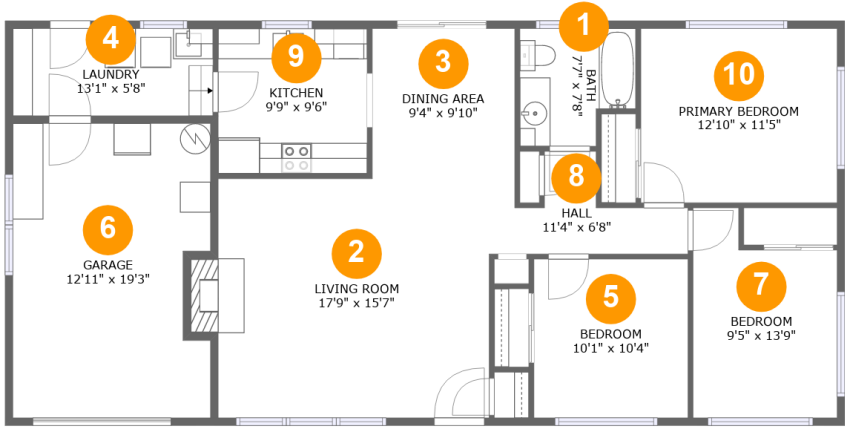


1 Bathrooms



1 Garages

456 Northwest Dennis Avenue, Mahan, Hillsboro, Washington
County, Oregon, United States, 97124



Room dimensions

Floor 1 Total:1033sqft Excluded: 323sqft

#		Max Dimensions	sqft	Included
1	Bath	7'7" x 7'8"	52 sq. ft	Yes
2	Living Room	17'9" x 15'7"	293 sq. ft	Yes
3	Dining Area	9'4" x 9'10"	91 sq. ft	Yes
4	Laundry	13'1" x 5'8"	75 sq. ft	No
5	Bedroom	10'1" x 10'4"	104 sq. ft	Yes
6	Garage	12'11" x 19'3"	238 sq. ft	No
7	Bedroom	9'5" x 13'9"	111 sq. ft	Yes
8	Hall	11'4" x 6'8"	47 sq. ft	Yes
9	Kitchen	9'9" x 9'6"	92 sq. ft	Yes
10	Primary Bedroom	12'10" x 11'5"	146 sq. ft	Yes

456 Northwest Dennis Avenue, Mahan, Hillsboro, Washington
County, Oregon, United States, 97124

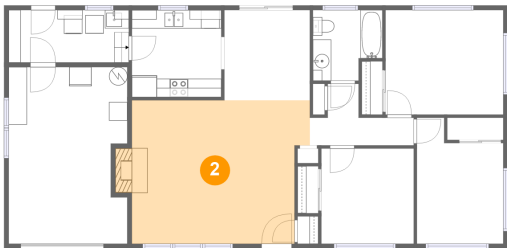
1 Floor 1 - Bath



Max Dimensions: 7'7" x 7'8"
Calculated Area: 52 sq. ft
Included: Yes

Heated: Yes
Finished: Yes
Enclosed: Yes
Contiguous: Yes
Permitted: Yes
Wet space: Yes
Addition: No
Conversion: No

2 Floor 1 - Living Room

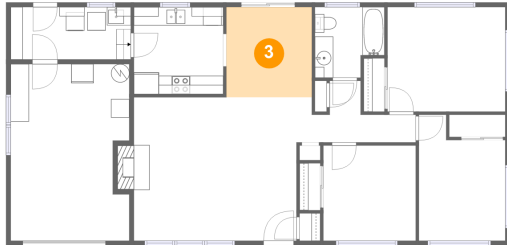


Max Dimensions: 17'9" x 15'7"
Calculated Area: 293 sq. ft
Included: Yes

Heated: Yes
Finished: Yes
Enclosed: Yes
Contiguous: Yes
Permitted: Yes
Wet space: No
Addition: No
Conversion: No

456 Northwest Dennis Avenue, Mahan, Hillsboro, Washington
County, Oregon, United States, 97124

3 Floor 1 - Dining Area



Max Dimensions: 9'4" x 9'10"
Calculated Area: 91 sq. ft
Included: Yes

Heated: Yes
Finished: Yes
Enclosed: Yes
Contiguous: Yes
Permitted: Yes
Wet space: No
Addition: No
Conversion: No

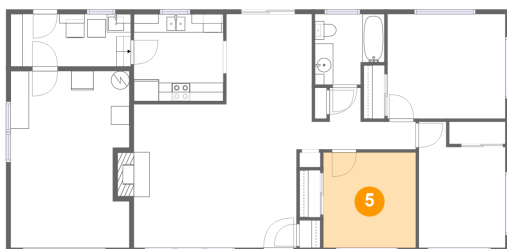
4 Floor 1 - Laundry



Max Dimensions: 13'1" x 5'8"
Calculated Area: 75 sq. ft
Included: No

Heated: Yes
Finished: No
Enclosed: Yes
Contiguous: Yes
Permitted: Yes
Wet space: No
Addition: No
Conversion: No

5 Floor 1 - Bedroom

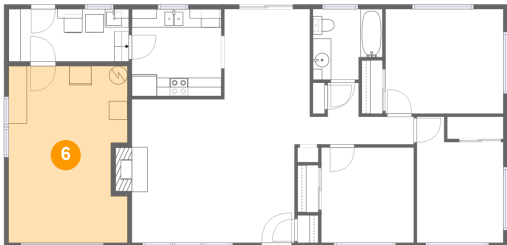


Max Dimensions: 10'1" x 10'4"
Calculated Area: 104 sq. ft
Included: Yes

Heated: Yes
Finished: Yes
Enclosed: Yes
Contiguous: Yes
Permitted: Yes
Wet space: No
Addition: No
Conversion: No

456 Northwest Dennis Avenue, Mahan, Hillsboro, Washington
County, Oregon, United States, 97124

6 Floor 1 - Garage



Max Dimensions: 12'11" x 19'3"
Calculated Area: 238 sq. ft
Included: No

Heated: No
Finished: No
Enclosed: Yes
Contiguous: Yes
Permitted: Yes
Wet space: No
Addition: No
Conversion: No

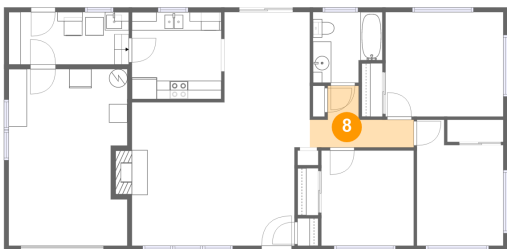
7 Floor 1 - Bedroom



Max Dimensions: 9'5" x 13'9"
Calculated Area: 111 sq. ft
Included: Yes

Heated: Yes
Finished: Yes
Enclosed: Yes
Contiguous: Yes
Permitted: Yes
Wet space: No
Addition: No
Conversion: No

8 Floor 1 - Hall

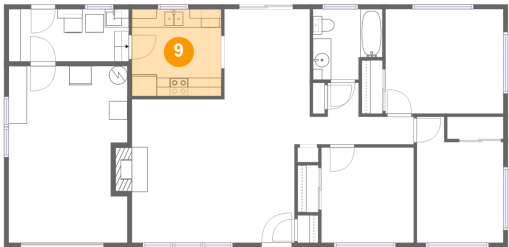


Max Dimensions: 11'4" x 6'8"
Calculated Area: 47 sq. ft
Included: Yes

Heated: Yes
Finished: Yes
Enclosed: Yes
Contiguous: Yes
Permitted: Yes
Wet space: No
Addition: No
Conversion: No

456 Northwest Dennis Avenue, Mahan, Hillsboro, Washington
County, Oregon, United States, 97124

9 Floor 1 - Kitchen



Max Dimensions: 9'9" x 9'6"
Calculated Area: 92 sq. ft
Included: Yes

Heated: Yes
Finished: Yes
Enclosed: Yes
Contiguous: Yes
Permitted: Yes
Wet space: No
Addition: No
Conversion: No

10 Floor 1 - Primary Bedroom



Max Dimensions: 12'10" x 11'5"
Calculated Area: 146 sq. ft
Included: Yes

Heated: Yes
Finished: Yes
Enclosed: Yes
Contiguous: Yes
Permitted: Yes
Wet space: No
Addition: No
Conversion: No