


Home report


103 Vista Montana Loop,Placitas,NM,US





FLOOR 1


Property summary


 **1** Garages


 **3** Bedrooms

 **2** Bathrooms

 **0** Half baths

 **1** Floors

 **1,760** Gross living area sqft

 **3,252** Total sqft

Home report

103 Vista Montana Loop,Placitas,NM,US



Room dimensions

Floor 1

Total sqft: 3252    Living area: 1760

#		Dimensions	sqft	Counted as living area
1	Bedroom	13'3" x 15'5"	174 sq. ft	Yes
2	Kitchen	11'6" x 19'1"	162 sq. ft	Yes
3	Dining Area	11'11" x 14'1"	168 sq. ft	Yes
4	Storage	11'3" x 17'4"	195 sq. ft	No
5	W.I.C.	5'7" x 7'4"	39 sq. ft	Yes
6	Patio	66'3" x 17'10"	550 sq. ft	No
7	Hall	3'9" x 10'11"	41 sq. ft	Yes
8	Living Room	19'10" x 18'9"	316 sq. ft	Yes
9	Covered Patio	24'1" x 18'3"	298 sq. ft	No
10	Pantry	7'4" x 4'2"	31 sq. ft	Yes
11	Primary Bedroom	13'1" x 15'5"	202 sq. ft	Yes

## Home report

# 103 Vista Montana Loop,Placitas,NM,US

#		Dimensions	sqft	Counted as living area
12	Bath	9'3" x 8'1"	74 sq. ft	Yes
13	Laundry	7'4" x 5'6"	40 sq. ft	Yes
14	Bath	9'5" x 11'5"	82 sq. ft	Yes
15	Bedroom	13'3" x 12'2"	161 sq. ft	Yes
16	Hall	5'11" x 5'4"	32 sq. ft	Yes
17	Garage	19'6" x 19'1"	399 sq. ft	No

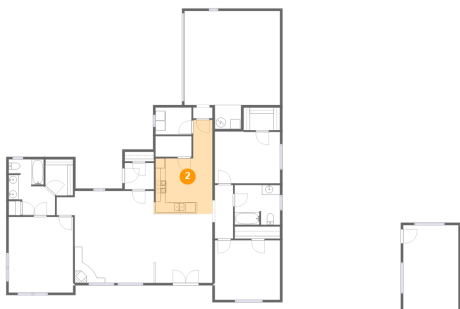
1 Floor 1 - Bedroom



Dimensions: 13'3" x 15'5"  
Area: 174 sq. ft  
Counted as living area: Yes

Heated: Yes  
Finished: Yes  
Enclosed: Yes  
Contiguous: Yes  
Permitted: Yes  
Wet space: No  
Addition: No  
Conversion: No

2 Floor 1 - Kitchen



Dimensions: 11'6" x 19'1"  
Area: 162 sq. ft  
Counted as living area: Yes

Heated: Yes  
Finished: Yes  
Enclosed: Yes  
Contiguous: Yes  
Permitted: Yes  
Wet space: No  
Addition: No  
Conversion: No

### 3 Floor 1 - Dining Area



Dimensions: 11'11" x 14'1"  
Area: 168 sq. ft  
Counted as living area: Yes

Heated: Yes  
Finished: Yes  
Enclosed: Yes  
Contiguous: Yes  
Permitted: Yes  
Wet space: No  
Addition: No  
Conversion: No

### 4 Floor 1 - Storage



Dimensions: 11'3" x 17'4"  
Area: 195 sq. ft  
Counted as living area: No

Heated: No  
Finished: No  
Enclosed: No  
Contiguous: Yes  
Permitted: Yes  
Wet space: No  
Addition: No  
Conversion: No

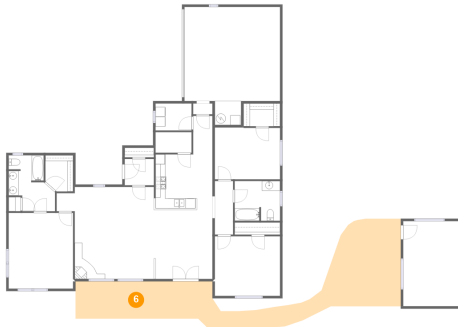
### 5 Floor 1 - W.I.C.



Dimensions: 5'7" x 7'4"  
Area: 39 sq. ft  
Counted as living area: Yes

Heated: Yes  
Finished: Yes  
Enclosed: Yes  
Contiguous: Yes  
Permitted: Yes  
Wet space: No  
Addition: No  
Conversion: No

## 6 Floor 1 - Patio



Dimensions: 66'3" x 17'10"  
Area: 550 sq. ft  
Counted as living area: No

Heated: No  
Finished: Yes  
Enclosed: No  
Contiguous: Yes  
Permitted: Yes  
Wet space: No  
Addition: No  
Conversion: No

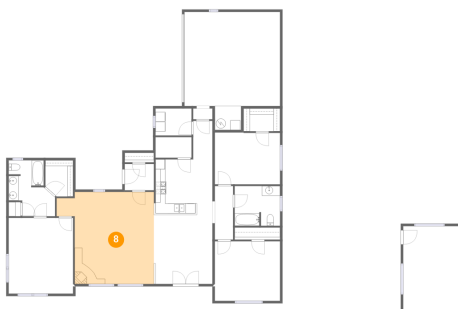
## 7 Floor 1 - Hall



Dimensions: 3'9" x 10'11"  
Area: 41 sq. ft  
Counted as living area: Yes

Heated: Yes  
Finished: Yes  
Enclosed: Yes  
Contiguous: Yes  
Permitted: Yes  
Wet space: No  
Addition: No  
Conversion: No

## 8 Floor 1 - Living Room



Dimensions: 19'10" x 18'9"  
Area: 316 sq. ft  
Counted as living area: Yes

Heated: Yes  
Finished: Yes  
Enclosed: Yes  
Contiguous: Yes  
Permitted: Yes  
Wet space: No  
Addition: No  
Conversion: No

## 9 Floor 1 - Covered Patio



Dimensions: 24'1" x 18'3"  
Area: 298 sq. ft  
Counted as living area: No

Heated: No  
Finished: Yes  
Enclosed: No  
Contiguous: Yes  
Permitted: Yes  
Wet space: No  
Addition: No  
Conversion: No

## 10 Floor 1 - Pantry



Dimensions: 7'4" x 4'2"  
Area: 31 sq. ft  
Counted as living area: Yes

Heated: Yes  
Finished: Yes  
Enclosed: Yes  
Contiguous: Yes  
Permitted: Yes  
Wet space: No  
Addition: No  
Conversion: No

## 11 Floor 1 - Primary Bedroom



Dimensions: 13'1" x 15'5"  
Area: 202 sq. ft  
Counted as living area: Yes

Heated: Yes  
Finished: Yes  
Enclosed: Yes  
Contiguous: Yes  
Permitted: Yes  
Wet space: No  
Addition: No  
Conversion: No

## 12 Floor 1 - Bath



Dimensions: 9'3" x 8'1"  
Area: 74 sq. ft  
Counted as living area: Yes

Heated: Yes  
Finished: Yes  
Enclosed: Yes  
Contiguous: Yes  
Permitted: Yes  
Wet space: Yes  
Addition: No  
Conversion: No

## 13 Floor 1 - Laundry



Dimensions: 7'4" x 5'6"  
Area: 40 sq. ft  
Counted as living area: Yes

Heated: Yes  
Finished: Yes  
Enclosed: Yes  
Contiguous: Yes  
Permitted: Yes  
Wet space: No  
Addition: No  
Conversion: No

## 14 Floor 1 - Bath

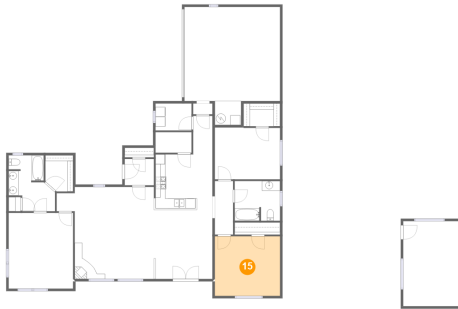


Dimensions: 9'5" x 11'5"  
Area: 82 sq. ft  
Counted as living area: Yes

Heated: Yes  
Finished: Yes  
Enclosed: Yes  
Contiguous: Yes  
Permitted: Yes  
Wet space: Yes  
Addition: No  
Conversion: No



## 15 Floor 1 - Bedroom



Dimensions: 13'3" x 12'2"  
Area: 161 sq. ft  
Counted as living area: Yes

Heated: Yes  
Finished: Yes  
Enclosed: Yes  
Contiguous: Yes  
Permitted: Yes  
Wet space: No  
Addition: No  
Conversion: No

## 16 Floor 1 - Hall



Dimensions: 5'11" x 5'4"  
Area: 32 sq. ft  
Counted as living area: Yes

Heated: Yes  
Finished: Yes  
Enclosed: Yes  
Contiguous: Yes  
Permitted: Yes  
Wet space: No  
Addition: No  
Conversion: No

## 17 Floor 1 - Garage



Dimensions: 19'6" x 19'1"  
Area: 399 sq. ft  
Counted as living area: No

Heated: No  
Finished: No  
Enclosed: Yes  
Contiguous: Yes  
Permitted: Yes  
Wet space: No  
Addition: No  
Conversion: No